





Welcome from the Vice-Chancellor Professor Liz Barnes CBE


Choose to start your future in the UK, one of the most culturally significant and opportunity filled countries in the world. Choose to study at Staffordshire University.

I would like to offer you a warm welcome to Staffordshire University – an institution ranked 37th out of 121 institutions in the UK in the Guardian League Tables 2020. In this prospectus you will find everything you need to know about student life, our heritage, and what makes us the right choice for you.

At Staffordshire University, we are committed to making a difference. Our unique and student-focused courses give you the skills to climb the career ladder and prepare for the jobs of the future, whether they're in the UK or around the globe. We continue to develop professional standard facilities, with over £100m invested in recent years and a brand-new student and employer hub building, set to open in 2021.



The contents of this guide are correct at the time of going to press. However, please check our website www.staffs.ac.uk before making an application in case there are any changes to the subject area or course you are interested in or to the other facilities and services described here. Where there is a difference between the contents of this guide and our website, the contents of the website take precedence and represent the basis on which we intend to deliver our services to you.




We welcome students from all over the world. Our international population is constantly growing, and as a result, we are widening our connected networks and extending our global vision.

We focus our attention on the future employability of our students, offering work placements and industry-recognised accreditations on many of our courses, which is just one of the reasons that we are rated Gold for teaching excellence in the Teaching Excellence Framework.

Please contact our brilliant and friendly international representatives or visit one of our Virtual Open Days where you can see the facilities and expert academics that have helped us break into the world's top 1000 universities in the Times Higher Education World University Rankings 2019.

We want you to start your journey in the UK as a part of Staffordshire University. Join us and take the next step to success.

Professor Liz Barnes CBE
Vice-Chancellor and Chief Executive



Staffordshire University – an award-winning institution in the heart of the UK

Staffordshire University is an award-winning institution and we are proud to share our achievements with current and prospective students. Our awards are from various credible and respectable sources within the UK and around the world.



RATED GOLD
FOR TEACHING QUALITY

Teaching Excellence Framework (TEF).

TOP 1000
WORLD UNIVERSITY

Times Higher Education
World University Rankings 2019.

TOP 40
UK UNIVERSITY

37th of 121 institutions in the
Guardian League Tables 2020.

TOP 250
YOUNG UNIVERSITY

Times Higher Education
World University Rankings 2019.

TOP 10
FOR STUDENT
SATISFACTION

Complete University Guide 2020.

SHORTLISTED
FOR UNIVERSITY
OF THE YEAR

The Times and the Sunday Times
Good University Guide 2020.



What these awards mean for students

Teaching Excellence Framework

The Teaching Excellence Framework (TEF) is a system that assesses the quality of teaching in universities in England. It also includes some universities from Scotland and Wales. Universities are classified gold, silver or bronze. These ratings are determined by teaching, academic support and progression to employment.

Guardian League Tables

The Guardian League Table ranks universities on all the factors that are most important to young people: how much they will benefit from the teaching, whether current students like the university and the subject, and what their chances are of getting a good job. It does not include research scores, because these are of limited relevance to students.

Times Higher Education World University rankings

The Times Higher Education World University Rankings 2020 includes almost 1,400 universities across 92 countries, standing as the largest and most diverse university rankings ever to date. The rankings are based on performance across teaching, research, knowledge transfer and international outlook.

The Times and Sunday Times University Guide

As well as institutional rankings, The Sunday Times and The Times have identified the centres of excellence within each subject area. The subject rankings are based on student opinion on teaching quality and their wider university experiences, combined with the outcomes of the 2014 research assessments, graduate job prospects and course entry standards.

Complete University Guide

The Complete University Guide is an independent guide, which analyses 131 universities across the UK, looking at areas such as graduate prospects, student satisfaction, student facilities, and spend per student.



Our Campuses



Stoke-on-Trent campus

Stoke-on-Trent is where the majority of our portfolio is taught and delivered and is the main campus of the university. Many international students will study, live and experience life in Stoke-on-Trent. The campus includes cutting-edge technology available for students, with developments taking place frequently to ensure you are able to learn using equipment you will find in real businesses and industries.



Staffordshire University London's Digital Institute


Staffordshire University's Digital Institute London launched in September 2019, and is based on the Here East campus in Queen Elizabeth Park. The Digital Institute combines big city vibrancy and networking with a hi-tech open plan study experience, to set you up for careers of the future.



Stafford and Shrewsbury Centres of Excellence

These centres house some of our health courses, with Simulated Laboratories to help you learn practical skills that will prepare you for real life placements.





Unique learning experience

Innovative



Smart Zone

The Smart Zone is a gateway to next generation technologies and the latest development in our digital transformation. Spanning two floors, the £1.3m zone fuses state-of-the-art fabrication, maker and collaboration spaces with augmented and blended reality facilities. Through digitally immersive technologies, the Smart Zone enables students to bring their ideas to life by exploring, designing and inventing the future.

Unique teaching methods

We have revolutionised the way selected courses run at the University with our new pathway courses. The new method gives students freedom to follow their industry and career interests part-way through the course, tailoring the end result to a specialist degree.



At Staffordshire University, we offer a unique learning experience you won't find anywhere else on the globe. The University provides students with innovative and professional opportunities, creating employable graduates with a global vision, who are ready to change the world.

Professional



GradEx

GradEX is a unique chance to view the exciting and innovative work being produced by our latest generation of final-year students from the Schools of Computing, and Digital Technologies, Engineering and Creative Arts, Law, Forensics and Policing, Life Sciences and Education, Health and Social Care, and Staffordshire Business School

Each year, GradEX is sponsored by a range of employers and professional organisations. Their involvement is essential to the events' success and the personal interactions that take place between our students and key industry figures, which can result in genuine job offers and career opportunities.

Careers Services

Our Careers Services team help students to secure part-time work while studying, find placements during courses or help set them in the right direction to fulfil their career ambitions after graduation. They have continued to set students on track at numerous careers fairs over the year, including part-time work and experience, graduate and placement and specific law fairs.





Global Vision

Staffordshire University London

Staffordshire University London's Digital Institute is our latest venture into up-and-coming digital industries. Following the successful launch of our esports course last year, the institute has gone one step further, cornering the market in London, the European capital of technology, and offers courses in computer games design, esports, and more.

Distance Learning

Our Distance Learning course portfolio is continuing to grow – giving working students the chance to connect, study and graduate from Staffordshire University from anywhere in the world.





Change-makers

Research with impact

We are not just inspiring our students to make a change in the world, we're leading by example. We are continuing to make waves in microplastic research, renewable energy and much more, as well as running our research centres in archaeology, psychological research, biomechanics and rehabilitation technologies, and health and development.

Successful Alumni

Our alumni are working in ground-breaking industries all over the world, making positive and influential changes in their areas of work. Not only does this prove the success of our unique learning experience, it gives us a huge international and high-level network of brilliant and friendly connections for our current students and staff to communicate with.





Your Staffordshire University Journey

1 Choose your course

So now you've decided you want to study at Staffordshire University, take a more detailed look at the courses we have to offer:

staffs.ac.uk/courses

You might also consider the campus you want to study at, our new Digital Institute in London offers several digitally focused courses where as our main portfolio is delivered in Stoke-on-Trent.

2 Entry requirements

Ensure you are doing the right academic subjects and at the right level for your course. Do you need to do a pre-sessional English course to help you get on to the degree?

For entry requirements from your country, check **staffs.ac.uk/international**

5 Your application

Now you've chosen your destination and your course, you're ready to start the application process. See page 48 for more information on how to apply for undergraduate and postgraduate courses.

For full details of the application process:
staffs.ac.uk/international

6 Accommodation

Take a look through our extensive accommodation offers.

Find out more on page 20 or visit:
staffs.ac.uk/student-life/accommodation/international-students



3 Explore our university

If you can, come and meet us or look out for our virtual open days. We also work with our students who will be happy to have a live online chat with you. Check our website for more information.

4 Visa requirements

It's important to gather as much information as possible, as early as you can. Check the UK visa requirements to make sure you're eligible to study in the UK at: www.gov.uk/government/organisations/uk-visas-and-immigration
If you have any questions, contact our friendly international admissions team:
int-admissions@staffs.ac.uk

7 Accepting your offer

Once you receive your unconditional offer, you will need to accept and pay your deposit. Look out for welcome information and we will see you in the UK!

For more information on fees and finance see: staffs.ac.uk/international/your-application-journey/international-fees

8 Welcome

We will come and meet you at the airport* to make for a smooth arrival at Staffordshire University. Alternatively, you can make your own way to Staffordshire University. Head toward Stoke-on-Trent train station via bus or rail - and our campus is just a few minutes walk away.

We usually have an extensive series of welcome events happening on campus to help you settle in to the area before you start your course.

*We operate an airport 'meet and greet' for September intakes on specified dates and times from Manchester International airport.



Staffordshire University London

When it comes to the latest tech industries, Staffordshire University has always been ahead of the game. We have always been known for our outstanding games design courses and in 2018 we became the first university in the world to offer a degree in esports.

The Digital Institute is based in Queen Elizabeth Olympic Park on the Here East campus, and is at the heart of digital and creative media. It's surrounded by the latest pioneering businesses and masters of broadcast entertainment, such as BT TV Studios, Sports Interactive, and the Copper Box Arena – the campus combines big city vibrancy and networking with a hi-tech open plan study experience, to set you up for careers of the future.



We have an advisory board full of business professionals to help us shape the future. Our advisory boards are our industry partners, and work with our students as mentors, offer live projects, internship opportunities and support us with guest lectures.

The courses are backed up with industry-experienced staff, along with incredible digital and broadcasting facilities.

With a games lab, cyber studio and esports arena you will feel like you're already at work. What's more we have a gallery set up that rivals professional arenas across the country. There are also places to relax, collaborate and plan your career in style.

Take the opportunity to study a course with all the benefits of a well-established Top 40 UK University, with the networking power and opportunity that comes with living, working and studying in the capital.



DIGITAL INSTITUTE LONDON

The undergraduate and postgraduate portfolio covers the lifecycle of modern industry:

DESIGN

Build the worlds and characters of the future

BA (HONS) COMPUTER GAMES DESIGN

CREATE

Organise and execute esports events on a huge scale

BA (HONS) ESPORTS

PROMOTE

Build, manage and maintain gaming communities

BA (HONS) GAMES PR AND COMMUNITY MANAGEMENT

PROTECT

Defend networks and systems from digital attacks

BSC (HONS) CYBER SECURITY

MASTER

Take the lead and become a specialist in the industry of tomorrow

MA ESPORTS

Things to do near our London Campus:

Based at Here East in Queen Elizabeth Olympic Park in London, it is easy to reach the centre of London via public transport, connecting you to the UK's capital city. It means that study, work experience opportunities and social life are all in easy reach and balance.

In London there are plenty of attractions to occupy your time including museums, art galleries and the famous West End for the latest theatre productions and other shows.

You will find a multitude of shops across London including high street stores, boutiques and designer brands.

With thousands of restaurants and bars as well as other entertainment, your options for leisure time will never be limited with something new to try constantly arising in the city.



Things to do in Stoke-on-Trent

The UK has a lot to offer to international students. From big city lifestyles to idyllic country landscapes, Britain is a unique figurehead for great education and European culture. Located in the heart of the UK is Stoke-on-Trent, the home of the pottery industry, footballing giants Stoke City FC, and of course, Staffordshire University.

Stoke-on-Trent is culturally significant, rich in industrial heritage and creative artistic flair. Just an hour's drive away from Liverpool, Manchester and Birmingham, Stoke-on-Trent holds a central location in the UK making it easy to reach other major cities. It is also home to headquarters of international companies such as Vodafone and JCB offering opportunities for graduate positions and work experience.

It's hard to mention Stoke-on-Trent without mentioning ceramics. Since the 17th Century, the city has been known for its ceramics industry, housing notable names such as Thomas Minton and Josiah Wedgwood. It's not just the past either, to this day Stoke-on-Trent still produces exquisite ceramics from bespoke companies such as Emma Bridgewater and Moorcroft Pottery too.

The foundations of this great heritage will live on, as it's clear to see that the population (or 'Potters') are hugely proud of their heritage.

You will find expertly restored bottle kilns are given pride of place in the streets, and museums such as Middleport Pottery and Gladstone Pottery Museum are still fully functioning.





Dine

With more than 200 places to eat, our region caters for every taste. When it comes to booking a table, you'll never be short of options.

Stroll

The great outdoors – including the Peak District, Hanley Park and Trentham Gardens – give you a chance to clear your mind in stunning surroundings.

Move

Keep in shape with a range of sporting activities. Fenton Manor Sports Centre, Longton Rugby Club, Flip Out, and Northwood Stadium are all close by.

Shop

Browse for hours at intu Potteries, Trentham Shopping Village and Festival Retail Park. With major shopping centres and outlets to choose from, you'll always have the chance to buy a new outfit.

Relax

Take in the culture of Chatsworth House, feel the highs and lows of championship football at the bet365 Stadium (home to Stoke City FC), or experience the thrills of Alton Towers Resort – the choice is yours.



Facilities

Esports Facilities

When it comes to our vision for a city campus, we want you to be well connected. And that's exactly what you'll be – thanks to vibrant and dynamic teaching and learning facilities, convenient public transport links and incredible social areas. These are just a selection of our fantastic facilities on our Stoke-on-Trent campus.

Over the past decade we've invested over £100m in developing our campus, with projects such as:

The Beacon Building

A £5.5m teaching facility with a built-in bistro.

Cadman Studios

An £11m development housing audio and visual technology.

The Science Centre

A £30m building packed with laboratories dedicated to scientific innovation.

The Student Hub

A student services space with over £1m of features for your support.

The Smart Zone

A £1.3m facility-filled dynamic designer-maker space.

Esports Hub

The latest gaming software, cameras, lighting and broadcast kit.

Our inspirational facilities include new games design studios, newly refurbished flexible spaces and a large dedicated motion capture studio. We've also updated our social spaces, including the Pavilion Fusion cafe and the dynamic Mellor Collision Space, so you'll always be in touching distance of everything you need to succeed.

A short walk from our Science Centre is our Crime Scene House. This is a real house we use to replicate crime scenes, giving you practical experience in investigating and putting forensic theories to the test in a real-world environment.

What's more, a brand-new £40m Catalyst building is on its way, which will host a variety of functions, including fantastic new teaching facilities, a food court, library, an employer hub, and dedicated facilities for our student apprentices.

Digital facilities

Our flagship digital space, The Digital Kiln, merges learning spaces with state-of-the-art technology to support digitally focused courses, as well as social and teaching areas for all students to enjoy.

The Smart Zone is our innovative designer-maker space. This includes the Digital Shed - a space where students can bring their ideas to life using 3D printing, laser cutting and other technologies with the support of technical specialists. It encompasses prototyping, digital fabrication, mechatronics, immersive technologies, 3D spatial and haptic design.

The Immersive Lounge bridges the gap between physical and virtual environments, featuring high-spec computers, space mapping technology, a green screen studio, a VIVE equipped VR arcade and dedicated indoor drone space.

The new facilities deliver a vibrant, dynamic environment for inspiring teaching, cementing our reputation as one of the UK's leading universities for digital technology. Bespoke labs for games programming, networking, mobile, web, multimedia, digital forensics, databases, big data, software engineering and our new dedicated Esports Hub are further proof that we're ideally placed to equip you for a diverse range of exciting digital careers.

Work out

Our Sir Stanley Matthews Sports Centre, at our Stoke-on-Trent campus, is home to some of the best sports and exercise equipment in the city, following our recent £1.25m investment. You can get up close with a range of facilities. These include exercise studios and cutting edge kit from cardio to free weights.

Relax

If that wasn't enough, we've refurbished our standard halls of residence with everything from USB plugs and instant hot water boilers, to outdoor pizza ovens, Bluetooth kitchen speakers and extra comfy seats.



Student discussion at the Digital Kiln



Cadman Studios



Sir Stanley Matthews Sports Centre

Accommodation: Stoke-on-Trent

Where you call home during your time at Staffordshire University plays a big part in your university experience, which is why the ResLife Team strive to make your stay in University accommodation amazing! Whether you are already independent, or it's your first time away from home, it should be one of the most rewarding and exciting experiences of your life.

The ResLife team provide support, advice and care to students living in accommodation, making sure that they have a brilliant experience. The primary goal of the ResLife staff is to facilitate the growth and development of the residence community and help each student achieve their academic, social and personal goals.

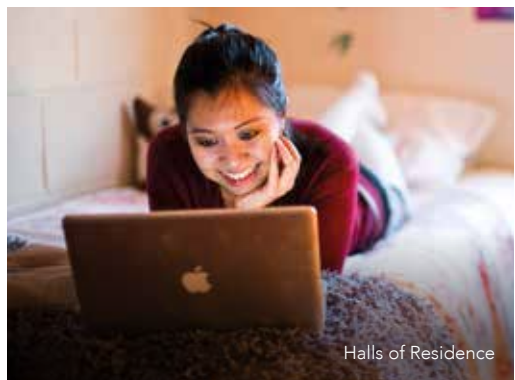
Living in Stoke-on-Trent

Our main halls of residence for international students in Stoke-on-Trent is College Court.

Close to the canal and just a ten-minute walk to College Road campus, College Court offers new bedrooms with en-suite bathrooms. You'll feel at home straight away in this friendly environment where you can enjoy movie and pizza nights in the common room.

Living off campus

If on-campus isn't for you, our Green Pad partners on our Stoke-on-Trent campus make it easy to find a list of approved landlords who are registered with the Students' Union. It's a great way to find accommodation for yourself, but with plenty of support from the Union.



Halls of Residence



Accommodation: Staffordshire University London

Big City Living: we have worked hard to provide our students with four accommodation options that are right in the centre of social and business areas in London, and more importantly, will see you right through your studies with a student budget in mind.

Unite Stratford One

0.8km

Offering single, en-suite rooms and studio apartments, just a 10 minute walk to the Here East campus.

Poland house

2.09km

A short walk from campus and offers shared kitchen and lounge facilities.

Sir John Cass Hall

2.4km

About a 30 minute walk from campus, it is located in Hackney Central and these all-inclusive rooms will give you everything you need.

Claredale house

3.8km

Located in the vibrant and popular Bethnal Green district, this accommodation provides the perfect balance between Central London living and East London studying.





Making lifelong friends

Our accommodation isn't just about giving you a key and a room. It's about helping you settle in, get used to your new place, and grow as a person. That's where our accommodation programme, ResLife, comes in. The main aim of ResLife is to create a welcoming atmosphere and help you make those vital connections with your housemates, as well as with the local community of Stoke-on-Trent.

We run an exciting programme of events, activities and workshops throughout the year so whatever you are in to, we have it covered!

Making sure you're happy and settled

We have a team of ResLife coordinators (RLCs) who live in the accommodation and make sure that everyone is happy. They're all returning students who have been at the University for at least a year, so they know what it's like to start a new adventure. The RLCs are the people to go to for help finding the best supermarkets in the area, the best places for a good night out, or where to do your laundry, for example. We also have a team of ResLife assistants to help you settle in to living on campus and get used to your new community.

Your personal welfare

Another great facility we offer is an on-site NHS healthcare centre, with doctors available during the week. Once you're registered, you'll have full access to a local GP service – something that isn't available at a lot of other universities. All this extra help means you can be as independent and community-minded as you want – and really make the most of your time here. For those feeling a bit homesick, we have a ResLife therapy dog and rabbits which you may see pottering around Coalport Halls of Residence. They are available to book for a petting session and will always be happy to see you - especially if you have some treats for them!

Safe and secure

Our ResLife Hub is staffed seven days a week. Our control team (an on-site support team) is available 24/7 and there's even a friendly campus police officer who can give advice on personal safety.

Please note, some of these services and facilities are currently based on the Stoke-on-Trent campus only





Students' Union

We know you'll love Staffordshire University as much as we do, and as soon as you join us, you'll be a part of our fantastic Students' Union. As well as providing advice and support services to all students, we encourage you to create, connect and explore your passions while you're studying. This is your Union, and you can help us make a difference.

Representing you

We are democratically led – with four students elected each year that make up the Officer Team. Our officers are supported by a range of student representatives, who guide our fantastic support mechanisms and other work to ensure the University hears your voice when making big decisions!

All student representatives are elected, and taking part is a fantastic opportunity for you to gain skills whilst making a change!

Get involved

Whilst you're studying here at Staffordshire University you can join us in a whole range of activities and events. There's over 100 different student-run clubs and societies that give you the chance to take up something completely new or feed your existing passions.

Developing you

Our officer team means that the Union is a student-led organisation, and our venues are no exception. We provide employment opportunities across our services and offices in a range of roles. We also support you in finding meaningful development opportunities in the community as a volunteer, and even right here on campus!

Advice, support and game changers

Our friendly advice team are here to support you. They're experts in academic advice, housing and even have a dedicated Money Doctors team to help with budgeting and money management. Our student officers also reach out to students with events, ideas and campaigns called 'game changers', to help make the university experience a safer and more enjoyable place for our students.

Please note, some of these services and facilities are currently based on the Stoke-on-Trent campus only.



Whether it's 'knit and natter' in Squeezebox, boardgames in the boardroom, quizzes and karaoke at Ember Lounge, fresh dining at Verve, or club nights at the LRV – you won't be struggling for something to do during your spare time. What's more, all our services and venues have the Best Bar None Gold Accreditation.

The Ember Lounge

If you're looking for your on campus living room for the year, then Ember Lounge is the place to be! It's the best place to relax with friends, check out live sport and sample fantastic foods. To add to all of that, it's also the home to our sell-out karaoke nights!

LRV

Our weekly club nights cater for all students, and in the last year alone, have hosted Professor Green, Scouting for Girls, Dougie Poynter and Kristian Nairn (Hodor). We also proudly work with our student groups on Rock Nights, House Parties, Poker Nights and even transform the space during the day for dance practice, vintage fairs and family friendly days.

Verve

With fresh dining, and a whole range of events, Verve is our all-day venue that hosts loads of live music, society events and daily food deals to keep you fuelled up for whatever the day holds!

SqueezeBox

If coffee is your game, then SqueezeBox is your campus caffeine stop. With a relaxed atmosphere, you can sit in with friends, or grab a coffee, smoothie or anything from the vegan friendly menu to go.



Sports

Sport and physical activity play a large part in the university experience. From meeting friends, to keeping fit and taking your mind off your studies, there's no better way to dive into campus life than joining TeamStaffs.

Whether you're a total novice looking for some recreational sport, or a rising star set for centre stage in the first team, there's something for you to get stuck into. From football, netball, basketball and lacrosse, to fun and friendly activities like Ultimate Frisbee® and glow-in-the-dark badminton.

Our sports facilities include:

- Grass pitches for football, lacrosse, American football, ultimate frisbee and rugby.
- Sports hall for badminton, volleyball, futsal and basketball.
- Two floodlit AstroTurf pitches.
- State-of-the-art 3G surfaces.

We have 25 teams competing in the inter-university BUCS (British University and Colleges Sports) league, as well as a number of students competing individually. But we're not just for the serious sportsperson, we have as many students taking part in recreational sport and physical activity as we do in our teams.

Talented Athlete Programme

If you do take your sport seriously and play at county level or above, you could apply for the Talented Athlete Programme. You'll have the chance to represent the University all over the country and receive a significant support package to allow you to compete and study to the best of your ability.

The support package includes:

- Free use of University Sports Facilities
- Sports therapy treatment
- Sports science performance testing
- Strength and Conditioning Coaching
- Sports nutrition support
- Sports psychology support
- Potential financial support

Please note, some of these services and facilities are currently based on the Stoke-on-Trent campus only.





Earn while you learn

To help you develop your skills in the workplace and also earn money alongside your studies, there are lots of opportunities we can help with that won't get in the way of your study time.

In the Union

Our clubs, shops and bars all need to be well stocked and run by capable, enthusiastic student staff, so we hire around 250 students every year to work in the Students' Union. From serving food and drink to designing posters for promotional activities, there aren't many parts of the Union you can't get involved in. If you are recruited for one of the jobs, you'll be paid over the minimum wage, but you won't be able to work more than 16 hours per week, so it doesn't interfere with your studies.*

As well as making money and more than a few friends, you'll have the chance to receive training in different professional areas, from food hygiene to leadership and management.

Student Ambassadors

Could you represent your University to prospective students, visitors or guests? Our student ambassadors are paid to help at various recruitment events, including Open Days, giving you lots of ways to develop your social, organisational, time management and communication skills. Plus, becoming a student ambassador is a fantastic way to make new friends and build up personal and professional references

Unitemps

You don't have to work in the university world - our in-house recruitment consultancy, Unitemps, helps students every year to find part-time jobs. It's the ideal way to add some extra colour to your CV, while putting money in your pocket.

You can learn more about Unitemps at:
www.staffs.ac.uk/unitemps

World of work

We make it our mission to prepare you for life after university. It's at the heart of everything we do from the moment you arrive.

Key skills are carefully built into all our courses, ensuring you're fully equipped by the time you graduate. We've talked with our network of industry leaders, so we know what they are looking for. That means, as a Staffordshire University graduate, you'll have a unique set of industry specific, work-ready attributes that employers seek.

*Depending on Visa terms and conditions for international students. If you're studying on a Tier 4 visa, you'll be able to work up to 20 hours per week during term time and full time during the holidays. Our on-campus careers service is available to help you find a suitable job to work around your visa commitments.



Career and personal development

Our Careers Studio team is bursting with knowledge, training and, most importantly, links to industry. Our team of experts will give you access to:

- One-to-one advice with a career expert.
- Coaching on interview techniques, CV writing and job applications.
- MyCareer, your career and personal development one-stop-shop and the first place to go to book career appointments, look for jobs on and off campus and experience and book on to careers events. For more information, please visit: www.staffs.ac.uk/mycareer
- Unitemps, our in-house recruitment agency, providing a range of paid work on campus and with local employers.
- Our annual employability and enterprise festival, which brings over 140 employers onto campus.
- Careers support for life!

Work experience opportunities

In the current graduate jobs market, you need more than qualifications alone. You need experience, too. That's why we arm you with a degree in one hand and a wealth of experience in the other. And thanks to our extensive contacts, we can often provide you with the opportunity for work experience.

For more information, please visit:
www.staffs.ac.uk/work-experience



Like jobs, one size doesn't fit all. Your work experience may be part of your course's connections, obtained through your school or the Career and Personal Development Team. Or it might be something you organise yourself. No matter how you find it, we'll help ensure it gives you the real hands-on learning your career needs.

Types of work experience:

- **Placements** – a full year in a workplace, sometimes abroad, as a designated part of your course.
- **Work-based placement** – a specific, often project based role.
- **Short placement** – a few weeks' insight and hands-on experience.
- **Paid internship experience** – initiated by an employer, usually through their HR department.
- **Serial placement** – a planned series of short periods in the workplace.
- **Voluntary work** – highly valued by employers, voluntary work demonstrates real commitment and teamwork.
- **Work shadowing** – in contexts where only a qualified practitioner is allowed to do the job, shadowing them will give an invaluable insight into how they work.

Please note, some of these services and facilities are currently based on the Stoke-on-Trent campus only

Highlight courses

At Staffordshire University, we are proud of our portfolio and are constantly evolving the content of our undergraduate and postgraduate programmes to develop graduates who are ready for their future career.

Our highlight courses are those we feel particularly showcase our innovative teaching approaches and state-of-the-art facilities for September 2020 entry.

Biological and Biomedical Sciences

Take the next step to global discovery in medicine or become an expert in biological science with our highly regarded courses in biological and biomedical science.

Our specialist equipment and research-experienced academics will help launch your career in the sciences. Our molecular biology and DNA analysis, genetic and gene expression analysis and cellular imaging facilities are used in research environments across the world, and our Analytical Centre includes all the professional-grade kit to enable the design, development and use of drugs for therapy.

Key courses:

- BSc (Hons) Biological Sciences
- BSc (Hons) Biomedical Science
- MSci Biological Sciences

Forensic Sciences

Study a range of scientific techniques and criminal investigation to help provide answers to the questions of law. Whether your interest lies in DNA profiling or building a criminal case, we have a course for you.

You will study with experienced academics and specialist facilities you won't find anywhere else, including our Crime Scene House. A bespoke house fitted with CCTV and two-way audio which gives the option of both internal and external simulated crime scenes. Plus, you'll develop your expertise in our Forensic and Security Lab, which contains dual screen PCs bound within a dedicated and isolated network.

Key courses:

- BSc (Hons)/ MSci Forensic Investigation
- BSc (Hons)/ MSci Forensic Science
- MSc Digital Forensic Investigation

CRIME SCENE-DO NOT ENTER



Business and Marketing

Whether you want to climb the executive ladder, or you want to grow your own business in new and innovative industries, our business and marketing courses will take you there.

With us, you'll get access to facilities and software at the forefront of modern business. You'll also have the chance to hear from, work for, and make business links with industry speakers and global organisations including JCB, BBC and Porsche.

Key courses:

- BA (Hons) Business Management
- BA (Hons) Business Management (International Pathway)
- BA (Hons) Marketing Management
- MSc Marketing Management

Student Testimonial

Haisu (Harry) Liu, Business and Marketing graduate

"Staffordshire University graduate, Harry Liu, is the Assistant Principal of Shenzhen Mingde Experimental School, China's first 'free school' – a public school jointly run by the district government and the Tencent Charity Foundation.

As Head of the English Department and International Office, Harry leads a team that initiates English teaching reform with a mission to developing the students into global citizens.

Harry says that his time at Staffordshire University, where he received both a degree in business studies and a master's degree in E-business, helped him gain knowledge and skills in a global context, as well as discover his passion for working with students. He continues to devote himself to cultivating high-achieving students in China into global citizens."



Engineering

With our school, you'll get expert-led courses designed with the latest industry requirements in mind. You'll benefit from our links with local and overseas businesses, such as Perkins Engines Company and Leoni. You will have the chance to work with state of the art equipment and technology in our SmartZone, including 3D scanning facilities and additive manufacturing machines. Our specialist Renewable Energy Lab contains a 'Wind Lab' system allowing you to explore solar energy and wind turbine systems, whilst our 'Thin Film Technology' Lab allows you to manufacture and conduct experiments with organic solar cells.

Key courses:

- BEng (Hons)/MEng Automotive and Motorsport Engineering
- MSc Electrical Engineering and Renewable Energy Systems
- MSc Mechanical Engineering and Sustainable Energy Technologies
- MSc Robotics and Smart Technologies
- MSc Aeronautical Engineering

Student Testimonial

Saleh Alghannam
Electrical and Electronic
Engineering graduate

"There were many unforgettable memories during my study at Staffs, and the best one was making friendship with another international student.

Staffs University helped me to be more confident about what I was doing and realise that nothing is impossible. It was like my home. They are so helpful and supportive. I was excited about doing engineering because I think it is the future need and I'm the type of person who likes to see things in detail as engineering does.

I'm currently working as an Electrical Instructor (Teaching and Training) to graduate students with technical Diploma after the high school."



Computer Science

Whether you want to defend cyber space, build next-gen AI, or develop cloud tech, we have a specialist course for you. With links with the likes of Sony, Cisco, Microsoft, Amazon, and Juniper, there is no better place to launch your career. Depending on your specialism, you will study using facilities such as our Cisco Lab, Oracle and SQL Server software, or the dedicated and isolated network in our Forensics and Security Lab. You will learn to mould future technology in our Real Time Lab, which includes a suite of robotic arms, autonomous vehicles, micro-controllers, motors and design suites.

Key courses:

- BSc (Hons) AI and Robotics
- BSc (Hons) Big Data Analytics
- BSc (Hons) Computer Science
- BSc (Hons) Cyber Security (Staffordshire University London)
- MSc Computer Science (Computer Networks Security)
- MSc Computer Science (Business Computing)
- MSc Computer Science (Software Engineering)
- MSc Computer Science (Cyber Security)



Student Testimonial

**Julijanta Gunawan,
Computing graduate**

"Staffordshire's multi-cultural students provided me with the right connections to tap into Europe and Asia. I found that my year at Staffordshire University gave me exposure to working as a team in a multi-cultural environment and provided a good grounding for my career enhancement"

Esports

Study the business and events side of the fastest growing entertainment and sports industry in the world. Our campuses in both Stoke-on-Trent and London are truly awe-inspiring, bolstering state-of-the-art facilities and specially selected academics that are experienced and professionally connected in the esports industry.

Our Esports Hub and Arena have the latest gaming software, cameras, lighting and broadcast equipment to help you organise, manage and take part in large-scale esports tournaments that can be streamed globally.

Key courses:

- BA (Hons) Esports
- BA (Hons) Esports (Staffordshire University London)
- MA Esports
- MA Esports (Staffordshire University London)

Student Testimonial

Kamila Danowska, Esports student

"I feel the course gives me a lot of advantages with the connections I have made and the experiences I'm gaining. If you genuinely enjoy the industry, you should probably come and study here."



Games Design, Production and Programming

Our accredited games design, production and programming courses can teach you everything from CGI concept design, to development and programming. Whatever you choose to study with us, you'll be supported by professionally linked academics, in facilities that mirror your future workplace.

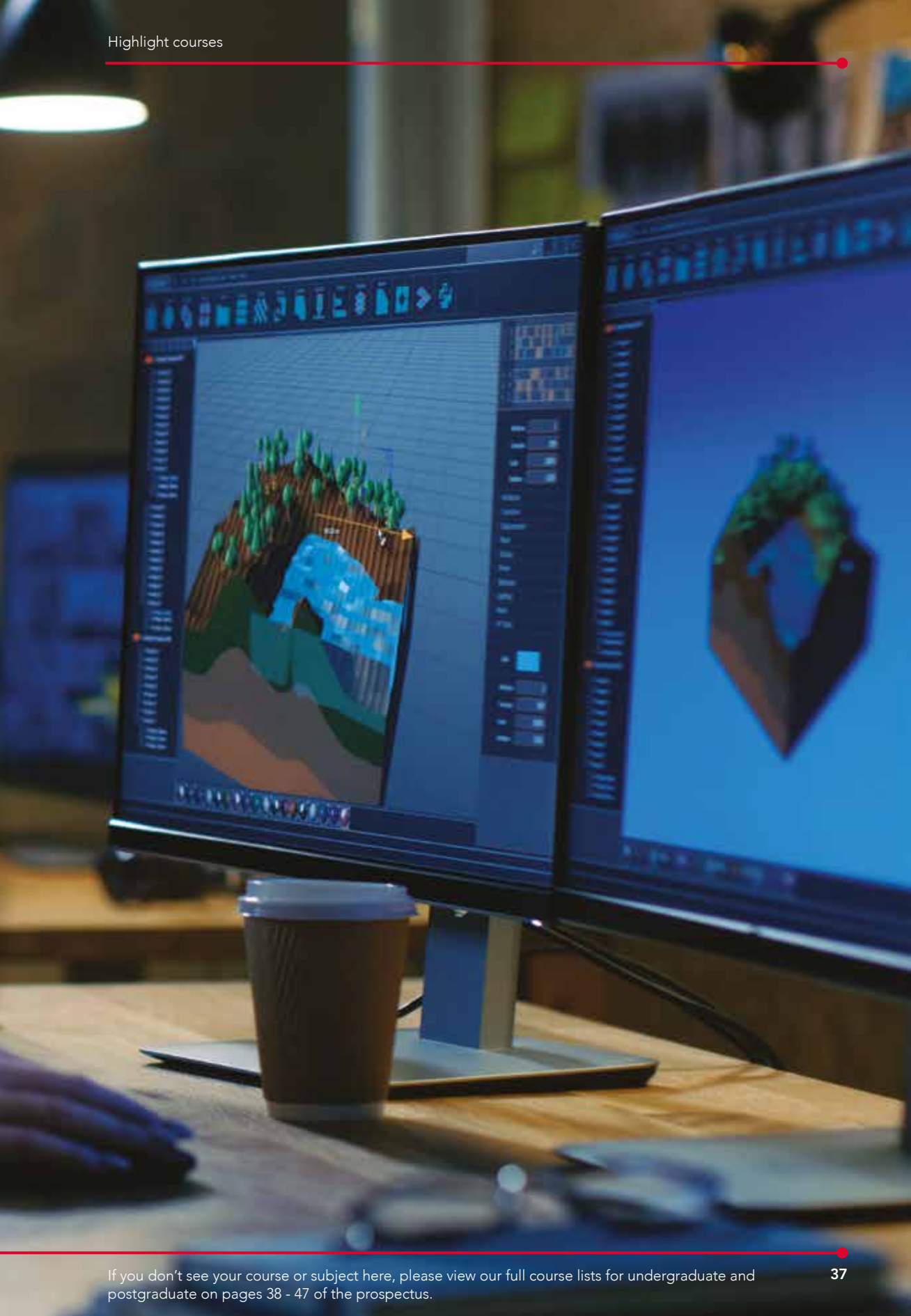
Our programming courses will give you experience programming with cutting edge, low-level APIs such as DirectX and OpenGL, as well as experience with industry hardware such as PS4. Our development courses focus on programming using existing industry standard games engines such as Unity and the UDK.

Epic Games Centre

Our Epic Games Centre is the only Epic Games sponsored design centre in the world. Here we host a space fully equipped with the latest hardware and software to nurture future industry developers studying with us on our games courses.

Key courses:

- BEng (Hons), BSc (Hons) Computer Games Design
- BSc (Hons) Computer Games Design (Staffordshire University London)



Our courses

All of these courses are available as full-time taught courses which are a total of 3 years in duration. In addition, some of our courses have other options for modes of study as detailed in the tables.

COURSE TITLE	AWARD	FOUNDATION YEAR	PLACEMENT YEAR	2 YEAR ACCELERATED
ACCOUNTING AND FINANCE				
Accounting and Finance	BA (Hons)	✓	✓	✓
ALLIED HEALTH AND PARAMEDIC SCIENCE				
Health and Social Care	BSc (Hons)	✓		
Operating Department Practice	BSc (Hons)			
Paramedic Science	BSc (Hons)			
ANIMATION				
Animation Optional Pathways: - Animation (2D Digital Animation) - Animation (3D Digital Animation) - Animation (Stop Motion Animation) - Animation (Computer Games Animation)	BA (Hons)	✓		
ART AND DESIGN				
3D Designer Maker	BA (Hons)			
Art and Design	BA (Hons)	✓		
Cartoon and Comic Arts	BA (Hons)			
Fine Art	BA (Hons)			
Graphic Design	BA (Hons)			

COURSE TITLE	AWARD	FOUNDATION YEAR	PLACEMENT YEAR	2 YEAR ACCELERATED
Illustration	BA (Hons)			
Industrial Design Product and Transport Optional Pathways: - Industrial Design (Product Design) - Industrial Design (Transport Design)	BA (Hons)		✓	
Photography	BA (Hons)			
Surface Pattern and Textile Design	BA (Hons)			
AUGMENTED AND VIRTUAL REALITIES				
Augmented and Virtual Realities	BA (Hons)	✓	✓	
BIOLOGICAL AND BIOMEDICAL SCIENCES				
Biological Sciences Optional Pathways: - Biological Science (Genomics) - Biological Science (Ecology and Environmental Management) - Biological Science (Pre-med) - Biological Science (Pharmacology)	BSc (Hons)/ MSci		✓	
Biomedical Science	BA (Hons)/MSci		✓	
BUSINESS AND MARKETING				
Business Management Optional Pathway: - Business Management (International Business Management)	BA (Hons)	✓	✓	✓
Marketing Management	BA (Hons)	✓	✓	
COMPUTER SCIENCE, AI AND ROBOTICS				
AI and Robotics	BSc (Hons)	✓	✓	
Big Data Analytics	BSc (Hons)	✓	✓	
Computer Science Optional Pathways: - Computer Science (Cloud Technologies) - Computer Science (Network Computing) - Computer Science (Software Development) - Computer Science (Internet and Web Management)	BSc (Hons)	✓	✓	
Cyber Security	BSc (Hons)	✓	✓	
Cyber Security (Staffordshire University London)	BSc (Hons)		✓	
DRAMA, PERFORMANCE AND THEATRE STUDIES				
Acting for Stage and Screen	BA (Hons)			

COURSE TITLE	AWARD	FOUNDATION YEAR	PLACEMENT YEAR	2 YEAR ACCELERATED
EDUCATION				
Early Childhood Studies Optional Pathway: - Education Studies (Special Educational Needs and Disabilities)	BA (Hons)			
Education Studies Optional Pathway: - Early Childhood Studies (Special Educational Needs and Disabilities)	BA (Hons)			✓
ENGINEERING				
Aeronautical Engineering	BEng (Hons)/MEng		✓	
AI and Robotics	BSc (Hons)	✓	✓	
Automotive and Motorsport Engineering	BEng (Hons)/MEng		✓	
Electrical and Electronic Engineering	BEng (Hons)/MEng		✓	
Engineering Design	BSc (Hons)		✓	
General Engineering	BEng (Hons)	✓		
Mechanical Engineering	BEng (Hons)/MEng		✓	
ENGLISH, CREATIVE WRITING AND PHILOSOPHY				
English Literature and Creative Writing Optional Pathways: - English Literature and Creative Writing (English Literature) - English Literature and Creative Writing (Creative Writing)	BA (Hons)	✓		✓
ESPORTS				
Esports	BA (Hons)	✓	✓	
Esports (Staffordshire University London)	BA (Hons)		✓	
FASHION				
Fashion	BA (Hons)		✓	
FILM AND MEDIA				
Film and Media Production Optional Pathways: - Film and Media Production (Advertising Film) - Film and Media Production (Music Video) - Film and Media Production (Experimental Film Production) - Film and Media Production (Production Technologies)	BA/BSc (Hons)		✓	
Film, Television and Radio	BA (Hons)			

COURSE TITLE	AWARD	FOUNDATION YEAR	PLACEMENT YEAR	2 YEAR ACCELERATED
FORENSIC SCIENCES AND POLICING				
Forensic Investigation	BSc (Hons)/MSci	✓*	✓	
Forensic Science	BSc (Hons)/MSci	✓	✓	
Policing and Criminal Investigation	BSc (Hons)/MSci	✓*	✓	
Professional Policing	BSc (Hons)	✓*		
GAMES ARTS AND VISUAL EFFECTS				
CGI and Visual Effects	BSc (Hons)		✓	
Concept Art for Games and Film	BA (Hons)	✓		
Games Art Optional Pathways: - Games Art (Character) - Games Art (Environment)	BA (Hons)	✓		
GAMES CULTURE, PR AND MANAGEMENT				
Games Cultures	BA (Hons)			
Games PR and Community Management	BA (Hons)	✓	✓	
Games PR and Community Management (Staffordshire University London)	BA (Hons)		✓	
GAMES DESIGN, PRODUCTION AND PROGRAMMING				
Computer Gameplay Design and Production	BSc (Hons)/ BEng (Hons)	✓	✓	
Computer Games Design	BSc (Hons)/ BEng (Hons)	✓	✓	
Computer Games Design (Staffordshire University London)	BSc (Hons)		✓	
Computer Games Design and Programming	BSc (Hons)	✓		
Computer Games Development	BSc (Hons)	✓	✓	
Computer Games Programming	BSc (Hons)	✓	✓	
GEOGRAPHY AND ENVIRONMENT				
Geography Optional Pathways: - Geography (Physical Geography) - Geography (Human Geography)	BSc (Hons)			
JOURNALISM AND CONTENT CREATION				
Digital Content Creation	BA (Hons)		✓	
Sports Journalism	BA (Hons)			
LAW				
Criminal Justice with Offender Management	BA (Hons)	✓*		

*Subject to validation

COURSE TITLE	AWARD	FOUNDATION YEAR	PLACEMENT YEAR	2 YEAR ACCELERATED
Law	LLB (Hons)	✓		✓
Law (Criminal Justice)	LLB (Hons)			
eLaw	LLB (Hons)	✓*		
MUSIC AND SOUND				
Music Production	BA (Hons)	✓		
Music Technology	BSc (Hons)	✓		
Sound Design	BSc (Hons)	✓		
NURSING AND MIDWIFERY				
Midwifery Practice	BSc (Hons)			
Nursing Practice (Adult)	BSc (Hons)			
Nursing Practice (Child)	BSc (Hons)			
Nursing Practice (Mental Health)	BSc (Hons)			
PSYCHOLOGY AND COUNSELLING				
Forensic Psychology	BSc (Hons)		✓	
Psychology	BSc (Hons)		✓	
Psychology and Child Development	BSc (Hons)		✓	
Psychology and Counselling	BSc (Hons)		✓	
Psychology and Criminology	BSc (Hons)		✓	
SOCIAL WORK AND SOCIAL WELFARE				
Health and Social Care	BSc (Hons)			
Social Welfare Law, Policy and Advice Practice	BA (Hons)			
Social Work	BA (Hons)			
SOCIOLOGY, CRIMINOLOGY AND TERRORISM				
Criminal Justice with Offender Management	BA (Hons)	✓*		
Criminology	BSc (Hons)/ MSci	✓*	✓	
SPORT AND EXERCISE				
Football Coaching and Performance	BSc (Hons)			✓
Physical Education and Youth Sport Coaching	BSc (Hons)			
Sport and Exercise Science Optional Pathway: - Sport and Exercise Science (Strength and Conditioning)	BSc (Hons)			
Sports coaching	BA (Hons)	✓		
Sports Therapy	BSc (Hons)			

*Subject to validation

TOURISM AND EVENT MANAGEMENT				
Events Management	BA (Hons)	✓	✓	
Tourism Management	BA (Hons)			
FdA Visitor Attraction and Resort Management (2 year course)	FdA			

Postgraduate, Full-time Taught courses

COURSE TITLE	AWARD	PLACEMENT YEAR
ACCOUNTING AND FINANCE		
Accounting and Finance	MSc	
ARCHAEOLOGY		
Forensic Archaeology and Genocide Investigation *Subject to validation	MA/MSc	
ART AND DESIGN		
Arts and Creative Technologies (by negotiated study)	MA/MSc	
Ceramic Design	MA	
BUSINESS AND MARKETING		
Business Administration	MBA	
Digital Marketing Management	MSc	
Human Resource Management	MA	
International Business Management	MSc	
COMPUTER SCIENCE, AI AND ROBOTICS		
Computer Science	MSc	
Computer Science (Business Computing)	MSc	
Computer Science (Computer Networks and Security)	MSc	
Computer Science (Cyber Security)	MSc	
Computer Science (Software Engineering)	MSc	
Robotics and Smart Technologies	MSc	
DRAMA, PERFORMANCE AND THEATRE STUDIES		
Advanced Theatre Practice *Subject to validation	MA	
EDUCATION		
Education	MA	

*Subject to validation

COURSE TITLE	AWARD	PLACEMENT YEAR
ENGINEERING		
Aeronautical Engineering	MSc	✓
Automotive Engineering	MSc	✓
Electrical Engineering and Renewable Energy Systems	MSc	✓
Electronic and Telecommunication Engineering	MSc	✓
Mechanical Engineering and Sustainable Energy Technologies	MSc	✓
Robotics and Smart Technologies	MSc	✓
ESPORTS		
Esports	MA	
Esports (Staffordshire University London)	MA	
FILM AND MEDIA		
Film Production *Subject to validation Optional Pathways: - Film Production (Commercial) - Film Production (Documentary) - Film Production (Drama)	MA	
Entertainment Technologies *Subject to validation Optional Pathways: - Research based study - Work based study	MA/MRes	
Film, Media and Music	MPhil/PHD	
FORENSIC SCIENCES AND POLICING		
Digital Forensic Investigation	MSc	
GAMES DESIGN, PRODUCTION AND PROGRAMMING		
3D Computer Games Design	MSc	
Entertainment Technologies *Subject to validation Optional Pathways: - Research based study - Work based study	MA/MRes	
INTERNATIONAL STUDIES AND HISTORY		
International Security and Cooperation	MA	
JOURNALISM AND CONTENT CREATION		
Digital Content Creation *Subject to validation	MA	
Journalism	MA	
Sports Journalism	MA	
LAW		
Legal Practice	LLM	

COURSE TITLE	AWARD	PLACEMENT YEAR
MUSIC AND SOUND		
Music Production	MA	
Music Technology	MSc	
PSYCHOLOGY AND COUNSELLING		
Foundations of Clinical Psychology	MSc	
Health Psychology	MSc	
Psychology	MSc	
SOCIAL WORK AND SOCIAL WELFARE		
Health and Social Care (by negotiated study)	MSc	
SOCIOLOGY, CRIMINOLOGY AND TERRORISM		
Criminology and Criminal Justice	MSc	

Distance Learning and Blended Learning

These courses are our undergraduate and postgraduate programmes available via distance learning or blended learning.

COURSE TITLE	AWARD	BLENDED LEARNING	DISTANCE LEARNING
UNDERGRADUATE			
INTERNATIONAL STUDIES AND HISTORY			
International Relations	BA (Hons)		✓
SPORT AND EXERCISE SCIENCES			
Sport and Exercise Psychology	BSc (Hons)		✓
POSTGRADUATE			
BIOLOGICAL AND BIOMEDICAL SCIENCES			
Applied Research	MSc	✓	
Molecular Biology	MA/MSc		✓
BUSINESS AND MARKETING			
Customer and Data Analytics	BSc (Hons) /MSc	✓	
COMPUTER SCIENCE, AI AND ROBOTICS			
Computer Science	MSc		✓
Computer Science (Business Computing)	MSc		✓
Computer Science (Computer Networks and Security)	MSc		✓
Computer Science (Cyber Security)	MSc		✓

COURSE TITLE	AWARD	BLENDED LEARNING	DISTANCE LEARNING
ENGINEERING			
MSc Professional Engineering	MSc		✓
ENGLISH, CREATIVE WRITING AND PHILOSOPHY			
Continental Philosophy	MA		✓
FORENSIC SCIENCES AND POLICING			
Applied Research	MA/MSc	✓	
Forensic Science	MSc	✓	
LAW			
Legal Practice	LLM	✓	
SOCIOLOGY, CRIMINOLOGY AND TERRORISM			
Sociology and Social Justice	MA	✓	
Terrorism, Crime and Global Security	MA		✓
Transnational Organised Crime	MA		✓
SPORT AND EXERCISE			
Sport and Exercise Psychology	MSc		✓
Clinical Biomechanics	MSc/PgCert		✓
Applied Sport and Exercise Science	MSc		✓
Sports Coaching	MSc		✓
INTERNATIONAL STUDIES AND HISTORY			
International Relations	MA		✓
International Relations and Russian Studies	MA		✓
International Relations and Central Asian Studies	MA		✓
International Policy and Diplomacy	MA		✓
International Security and Cooperation	MA		✓
International History	MA		✓





Research Degrees

As part of our research community, you'll have access to research excellence and expertise in many specialist areas as well as our top-class facilities.

Taking on a research degree is a big decision. It's important to choose a subject that really excites you so that you'll keep engaged throughout the research.

Once you have an area of interest, it's important that you get support and supervision from a leading academic in your field. We've outlined the supervision expertise for each of our academic schools at Staffordshire University. If you would like to make an enquiry to start the application process, please complete our MPhil/PhD enquiry form by visiting staffs.ac.uk/research/postgraduate-research/areas-of-expertise

Traditional PhDs

We offer traditional PhDs where you undertake an in-depth research project while working alongside a supervision team. These are usually self-funded, but studentships may be available for some new doctoral research projects.

Our areas of expertise lie in the following departments:

- Engineering
- Humanities and Performing Arts
- Computer Science
- Digital Design and Technologies
- Film, Media and Music
- Health and Social Care
- Criminal Justice and Forensics
- Law
- Biological Science
- Education
- Psychology
- Sport and Exercise
- Business

Find out more about specific areas within these at staffs.ac.uk/research/



The Application Process

Applying for an undergraduate or postgraduate degree at Staffordshire University is easy. There are a few different ways to apply, depending on what you're looking to study.

How to apply

Undergraduate degrees

To apply for an undergraduate programme you are welcome to choose one of the following:

1. Apply directly by requesting a link from our International Admissions team at **int-admissions@staffs.ac.uk**
2. Contact one of our approved overseas education representatives in your country to start the application process – you can find your representative at **staffs.ac.uk/international/your-country**
3. Apply through UCAS, instructions for International and EU students can be found on the UCAS website **ucas.com**

The UCAS code for Staffordshire University is: S72

Postgraduate Taught and Postgraduate Research degrees

To apply for a postgraduate taught or research programme:

1. Apply directly from the course pages using the 'apply now' button.

Or

2. Contact one of our approved overseas education representatives in your country to start the application process – you can find your representative at **staffs.ac.uk/international/your-country**

It is important to apply for your course as early as possible, so you have plenty of time to make travel arrangements. You can start applying for a degree a year before the start date.

Further information on the application process can be found on **staffs.ac.uk/international/your-application-journey/how-to-apply**



Your offer

Once our International Admissions team have considered and approved your application, you will be sent an offer to study at Staffordshire University. This will contain detailed information of what you need to do to accept your place.

Your arrival

After you accept your offer, we will contact you with arrival and orientation information to ensure your move to the UK goes smoothly. If you require a visa to study in the UK, the international support team will be on hand to answer any of your questions and guide you through the process.

staffs.ac.uk/international



English Language Requirements

As part of our application process, you'll usually need to demonstrate your English language proficiency through a test recognised by Staffordshire University.

Most of our courses require a minimum IELTS score of 6.0 overall with 5.5 in each component or an equivalent approved qualification. However, some courses have higher entry criteria due to accreditation requirements or the need to have exceptional communication skills as part of the course.

What's more, we also offer in-session courses for on-going support whilst you are studying.

Requirements for postgraduate courses can be found in the entry requirements section of the course page.

Country specific qualifications

We also accept a range of country specific English language qualifications. For more information, please visit staffs.ac.uk/international

Exemptions

You don't need to provide evidence of English language proficiency if any of the following conditions apply:

- If you're a national of a Majority English Speaking Country as specified by the general student visa (Tier 4) guidance.
- If you're a UK national.
- If you've completed a full degree from a UK university.
- If you're currently holding a Tier 4 Child visa and want to switch immediately on to a Tier 4 General visa.

Pre-session and in-session language courses

If you don't meet the English Language requirements, you may be able to study a pre-session English course to help you improve your skills and build your confidence. We offer different courses depending on your current ability.

staffs.ac.uk/international/your-application-journey/english-language-requirements/english-language-courses



Qualifications we accept

Qualification name	Minimum requirement	Validity
IELTS (non UKVI)	6.0 overall with a minimum of 5.5 in each component	2 years
Password English	6.0 overall with a minimum of 5.5 in each component	2 years
Trinity College London ISE II	Pass in all four components	2 years
TOEFL IBT	Listening: 17 Speaking: 20 Reading: 18 Writing: 17	2 years
PTE (Pearsons)	Minimum score of 51 in all four categories	2 years
International Baccalaureate (taught in English)	Pass in English B at SL grade 5 or HL grade 4	5 years
City & Guilds ESOL International (IESOL)	Pass	5 years
IGCSE English	IGCSE English as a first or second language: Grade C	5 years
Cambridge International English GCE O Level/GCSE	English Language grade A - C	5 years

TOP 40 UK UNIVERSITY

37th of 121 institutions in the
Guardian League Tables 2020.

TOP 10 FOR STUDENT SATISFACTION

Complete University Guide 2020.



RATED GOLD FOR TEACHING QUALITY

Teaching Excellence Framework (TEF).

SHORTLISTED FOR UNIVERSITY OF THE YEAR

The Times and the Sunday Times
Good University Guide 2020.



For more detailed information on courses or studying
at Staffordshire University, visit: www.staffs.ac.uk

Find us on: staffs.ac.uk/socialmedia