

# POSTGRADUATE PROSPECTUS 2020

A smiling woman with long dark hair, wearing a green off-the-shoulder top with a floral pattern and a black watch on her left wrist. She is standing with her arms crossed, framed by a thick red border.

# IT'S TIME

## TO REALISE MY POTENTIAL

# CONTENTS

03	WELCOME TO STAFFORDSHIRE UNIVERSITY
04	AN AWARD-WINNING INSTITUTION
06	OUR UNIQUE LEARNING EXPERIENCE
08	IT'S TIME
10	CHOOSING YOUR POSTGRADUATE DEGREE
12	POSTGRADUATE RESEARCH
14	POSTGRADUATE RESEARCH CENTRES
16	GROUNDBREAKING RESEARCH
18	GRADUATE SCHOOL
20	VISIT US
22	CITY OF OPPORTUNITY
24	OUR CONNECTED CITY CAMPUS
28	STUDENT SUPPORT NETWORKS
30	FACILITIES
32	STAFFORDSHIRE UNIVERSITY LONDON
34	THE COST OF SUCCESS
36	ALUMNI DISCOUNT
38	OUR SUBJECT AREAS
63	HOW TO APPLY
64	HOW TO APPLY FOR A PHD
66	TESTIMONIALS

The contents of this guide are correct at the time of going to press. However, please check our website [www.staffs.ac.uk](http://www.staffs.ac.uk) before making an application in case there are any changes to the subject area or course you are interested in, or to the other facilities and services described here. Where there is a difference between the content of this guide and our website, the content of the website take precedence and represent the basis on which we intend to deliver our services to you.



*Liz Barnes*

**Professor Liz Barnes CBE**  
Vice-Chancellor and Chief Executive  
Staffordshire University

## WELCOME FROM THE VICE-CHANCELLOR

On behalf of all our staff and students, it is my pleasure to welcome you to Staffordshire University.

With decades of experience providing first-rate postgraduate education across a broad range of disciplines, our award-winning institution represents an excellent choice for anyone exploring opportunities for further study. It's time to take the next step.

This prospectus contains all the information you need to make an informed decision about the next stage of your education. Whether you're continuing your studies or looking for the right qualification to boost your career progression, we are ready to support your ongoing development with tools that will help you to shape your future.

Our robust offering has been designed in collaboration with leading industry experts in a bid to provide solutions to the challenges of tomorrow. With details of our diverse portfolio of subjects and courses, the following pages will offer a flavour of postgraduate education at Staffordshire University, highlighting the ways in which studying with us will help you to unlock your full potential.

We also understand that postgraduate students often have to balance their studies with demanding personal lives, juggling University with paid work, care commitments and other responsibilities. For this reason, we offer an array of innovative and flexible modes of study, enabling you to further your education regardless of your location or circumstances.

Put simply, your learning is at the heart of everything we do. Staffordshire University's TEF Gold rating reflects our commitment to teaching excellence, and our student-centric strategy, world-class facilities and academic brilliance have seen us break into the top 40 of The Guardian's University League Tables 2020 (37th out of 121 UK institutions).

However, we're still hungry for more, which is why we're continuously transforming our learning environment to give you the best possible postgraduate experience. We've already invested well over £100 million across our campuses, and we're constantly introducing new and exciting facilities that will add value to your future.

The only way to truly understand why Staffordshire University is the best choice for your future is to witness it first-hand. Come to one of our Postgraduate Open Events to meet our brilliant and friendly academics, our curious and daring students, and to learn more about our ambitious and inspirational vision for the future.

**It's time to make a change. It's time for postgraduate.**



# AN AWARD-WINNING INSTITUTION



## RATED GOLD FOR TEACHING EXCELLENCE

Teaching Excellence Framework (TEF)

## OUTSTANDING RESEARCH

78% OF OUR RESEARCH IS OF  
INTERNATIONAL STANDARD OR BETTER

Research Excellence Framework (REF)

## TOP 250 YOUNG UNIVERSITY

Times Higher Education World  
University Rankings 2019

## TOP 40 UK UNIVERSITY

37th of 121 institutions in the  
Guardian League Tables 2020

## TOP 1000

Times Higher Education World  
University Rankings 2019

## SHORTLISTED FOR UNIVERSITY OF THE YEAR

The Times and The Sunday Times  
Good University Guide 2020

### WHAT DO OUR ACCOLADES MEAN?

Staffordshire University is an award-winning institution, and we are proud to share our accolades with current and prospective students. Our accolades are from various different credible and respectable sources within the UK and internationally.

### TEACHING EXCELLENCE FRAMEWORK

The teaching excellence framework (TEF) is a system that assesses the quality of teaching in universities in England. It also includes some universities from Scotland and Wales. Universities are classified gold, silver or bronze. These ratings are determined by teaching, academic support and progression to employment.

### RESEARCH EXCELLENCE FRAMEWORK

The Research Excellence Framework secures the continuation of a world-class, dynamic and responsive research base within UK higher education. The process is carried out by an expert panel made up of senior academics, international members and research users. It measures the quality of outputs, their impact beyond academia, and the environment that supports research.

### TIMES HIGHER EDUCATION WORLD UNIVERSITY RANKINGS

The Times Higher Education World University Rankings 2020 includes almost 1,400 universities across 92 countries, standing as the largest and most diverse university rankings ever to date. The rankings are based on performance across teaching, research, knowledge transfer and international outlook and are of huge importance across the globe.

### GUARDIAN LEAGUE TABLES

The Guardian League Tables ranks universities on all the factors that are most important to young people: how much they will benefit from the teaching, whether current students like the university and the subject, and what their chances are of getting a good job. It does not include research scores.

### THE TIMES AND THE SUNDAY TIMES GOOD UNIVERSITY GUIDE

As well as institutional rankings, The Sunday Times and The Times have identified the centres of excellence within each of 67 subject areas. The subject rankings are based on student opinion and their wider university experiences, combined with the outcomes of the 2014 research assessments, graduate job prospects and course entry standards.



# OUR UNIQUE LEARNING EXPERIENCE

It's time to take advantage of the Staffordshire University Unique Learning Experience. The postgraduate experience is built around the tangible offering that we are becoming renowned for, split into four key areas: innovative, professional, global vision and change-makers.

With new facilities being built every year, globally regarded research being carried out, and huge growth in our international population and distance learning opportunities, we are the place to be for postgraduate study.



## INNOVATIVE

Innovation is what we do. We drive new ideas and initiatives, are constantly adding revolutionary facilities such as the Smart Zone, and are adapting our teaching methods to suit our students, whatever commitments and responsibilities they may have.



## PROFESSIONAL

We enable students to graduate in possession of a complete professional profile based on our values, competences and attitudes, and we continue to provide opportunities to showcase and develop these attitudes.



## GLOBAL VISION

Our students discover the world without leaving the campus. We have students from all over the world, and our physical, as well as digital reach, is extending every day with new opportunities like Staffordshire University London and a growing distance learning portfolio.



## CHANGE-MAKERS

Our attitude as a community makes us stand out from the crowd and gives us the opportunity to make a difference. Plus, we make an impact with our research, offering students of all levels the chance to make their mark on the world and their growing careers.





# IT'S TIME

Be all you can be with a postgraduate degree from Staffordshire University.



## CHANGE YOUR PATH

The clock doesn't stop for anyone. Whether you're looking to chase new passions in industry or sidestep between careers, we can help you reach your goal. With Staffordshire University, you can balance studying for a postgraduate degree with your commitments. Don't worry, we can help you easily adjust back into education and provide all the support you need to make your career dreams a reality.

## BREAK CAREER BOUNDARIES

Don't stand still while others move forward. It's time to harness your potential, take charge of your future, and climb the career ladder. A postgraduate degree will give you a crucial competitive edge in a crowded jobs market as well as increase your earning potential. Whatever your career, we will have a course for you, and we have a team of Careers Coaches on-hand to give you all the coaching and support you need to get that promotion.

## TAKE THE NEXT STEP

Why stop with a degree? If you're coming to the end of your undergraduate studies and you want to advance your knowledge while your skills are still sharp - postgraduate study is for you. We offer up to 25% discount on selected postgraduate courses for eligible Staffordshire University Alumni who start their course within two years of graduation.

**It's time to make your mark on the future. It's time for postgraduate.**

# CHOOSING YOUR POSTGRADUATE DEGREE

Welcome to 21st century education. A place where you don't need to be in the same room, city, country, or even continent as the experts that are forwarding your careers.



At Staffordshire University, we pride ourselves on delivering the best postgraduate courses. We offer a variety of taught and research-led courses, many available to study via distance learning and on both a full-time and part-time basis.

It might be time for you to discover a better future with postgraduate study, but we don't want you to compromise the success you have already had in this competitive world.

We are here to make a difference, however you want to study.

## TYPES OF POSTGRADUATE DEGREE

### TAUGHT

Build on your expertise in a classic learning environment. Lectures, seminars and assignments will sharpen your expertise, and you'll be assessed in traditional methods including exams, essays, group projects and dissertations. You will gain new skills and techniques to take into the workplace and have the support of our exceptional suite of facilities to learn in.

### RESEARCH-LED

Discover your passions with an independent research-led degree. Our experts will support your independent research into specialist areas of your chosen field, which will culminate in a published thesis. This type of degree can not only further your career, but make a mark on your current field, and better prepare you for PhD level study.

## POSTGRADUATE STUDY OPTIONS

### FULL-TIME

Immerse yourself in campus life and your chosen subject. You'll use our facilities and study spaces while learning from our experts through a set number of weekly contact hours. You'll also be expected to study in your own time.

### PART-TIME

Part-time study is low-impact, flexible, and offers lots of benefits – including access to campus facilities and study spaces, and meeting and working with new people. What's more, you can fit your studies around your existing commitments.

### DISTANCE LEARNING

Don't let your location hold you back. With distance learning you'll have access to lectures, recordings and course materials online and can fit your study around your personal and work life. Wherever you are, whether you're changing the world from a remote location, or you're changing lives at home, you'll be supported 24/7 by our course leaders using the latest online technology.





# POSTGRADUATE RESEARCH

## DOCTORATE LEVEL RESEARCH DEGREES

It's time to be the best. Doctorate level research degrees are the highest award we offer at Staffordshire University. With a doctorate level degree you will be regarded as a recognised expert, have contributed to the advancement in your field during your studies, and set the stage for your future to break the boundaries of some of the highest positions in industry.

We offer three types of doctorate level research degree: traditional PhDs, Professional Doctorates and PhDs by published work.

## TRADITIONAL PhDs

Our traditional PhDs allow you to undertake an in-depth research project while working alongside a supervision team. They are usually self-funded, but funded PhD studentships may be available for some new doctoral research projects.

Your supervision team is one of the most important aspects of your study, as they will ensure you stay on the path you need to attain your qualification. We have expertise across the entire University and it's critical that one of these match your specialist area of study. We also have a number of ready-to-go PhDs available if you need some guidance.

To find out more about our areas of expertise and our ready-to-go PhDs, please visit: [www.staffs.ac.uk/research/postgraduate-research/](http://www.staffs.ac.uk/research/postgraduate-research/)

## PROFESSIONAL DOCTORATES

A professional doctorate focuses on applying research to practical problems, formulating solutions to complex issues, and designing effective professional practices within your field. They combine taught modules with an in-depth research project.

We offer professional doctorates in:

- Health Psychology
- Clinical Psychology
- Healthcare Science
- Doctor of Education (EdD)
- Forensic Science
- Policing
- Criminal Justice
- Law

## PhDs BY PUBLISHED WORK

A PhD by published work allows you to apply for a research degree based on work you have already had published or exhibited. This can include edited texts, creative works or collections of artefacts that you have exhibited in public.

To find out how to apply for one of our doctorate-level postgraduate degrees, visit: [www.staffs.ac.uk/research/postgraduate-research/how-to-apply](http://www.staffs.ac.uk/research/postgraduate-research/how-to-apply)



# POSTGRADUATE RESEARCH CENTRES

It's time to think about the future. At Staffordshire University we are committed to providing world-leading and innovative research.

Our professors and students conduct research all over the world and we are proud to contribute to leaps in knowledge, understanding and discovery. 78% of our research was rated as 'world leading' or of 'international importance' in the Research Excellence Framework 2014. We have four dedicated research centres at the University that underpin our strategic aim to encourage staff to engage in scholarly activity and external research collaborations.

## **CENTRE OF ARCHAEOLOGY**

Our expertise in the Centre of Archaeology is on holocaust and forensic archaeology. Work in the field has included archaeological surveys at strategic extermination camps and killing sites in Europe, including Treblinka, Poland and Anhatlager, Serbia.

## **STAFFORDSHIRE CENTRE FOR PSYCHOLOGICAL RESEARCH**

At the Staffordshire Centre for Psychological Research we conduct socially relevant research that has a positive impact on psychological health. Examples include: understanding how to better help people cope with chronic pain; exploring the impact of conspiracy theories on health behaviour; identifying the effect of social norms on health behaviour and attitude change.

## **CENTRE FOR BIOMECHANICS AND REHABILITATION TECHNOLOGIES**

Our work within the team focuses on improving health, the quality of life and healthcare provision by solving complex biomechanical issues related to diseases that are a public health concern. We aim to advance the understanding of musculoskeletal biomechanics through highly innovative and integrated approaches.

## **THE CENTRE FOR HEALTH AND DEVELOPMENT**

The Centre for Health and Development undertakes applied, translational research to improve health and help to reduce health and social inequalities in our local communities. In partnership with Stoke-on-Trent City Council and Staffordshire County Council, we've developed an extensive network of individuals and organisations to tackle local issues.



# GROUNDBREAKING RESEARCH

As well as being at the centre of the UK, we're also at the heart of some of the most outstanding applied research in Britain. Our professors conduct research all over the world, as well as right here at Staffordshire University.



**PROFESSOR  
CAROLINE STURDY COLLS**

Professor of Conflict Archaeology and Genocide Investigation

Caroline is Staffordshire University's Professor of Conflict Archaeology and Genocide Investigation, director of the Centre of Archaeology and author of the globally renowned book *Holocaust Archaeologies: Approaches and Future Directions*.

Her research focuses on holocaust and forensic archaeology, and she is one of the leading names in her field, receiving international media attention through television documentaries and radio programmes in both Europe and the US. Caroline doesn't conduct all her research behind a desk, she is an accomplished field researcher, being the first to complete archaeological surveys at strategic extermination camps and killing sites in Europe, including Treblinka, Poland and Anhatlager, Serbia. Not only this, she is a practicing forensic archaeologist, undertaking consultancy for UK Police forces with regards the search and recovery of buried remains.

Caroline is at the top of her field, both publishing an extensive collection of papers and books and holding regular conference talks and lectures about her research.



**PROFESSOR  
CHRISTOPHER GIDLOW**

Professor of Applied Health Research

Chris has been an applied health researcher at Staffordshire University since completing his PhD in 2006. During this time, he has led applied health research in a range of areas, becoming internationally recognised in two: natural environments and health, and health and physical activity promotion through primary care.

Chris has secured funding for, and led, research and evaluation projects totalling almost £1.8 million. This includes funding from prestigious sources, such as the National Institute for Health Research and the European Seventh Framework Programme, and has allowed him to develop an international network of colleagues and collaborators, and to publish widely in the process. Now, as the Academic Director for the Centre for Health and Development (CHAD), Chris will continue to build this research portfolio, extensive PhD supervision and curriculum development around health.



**PROFESSOR  
KAREN RODHAM**

Professor of Health Psychology

Karen has built on her background as practicing health psychologist at the Royal National Hospital for Rheumatic Diseases, and is now the Co-Director of the Professional Doctorate in Health Psychology and directs the Staffordshire Centre for Psychological Research (SCPR) at Staffordshire University.

Her research expertise lies in conducting qualitative research that develops our understanding of how people cope with difficult health-related situations. Interviews, discussions and observations help her learn what helps or hinders people's ability to cope, and it's this type of research that has contributed to the real success of the SCPR.

Thanks to work conducted at the SCPR we are gaining a deeper understanding of how best to help people cope with long term conditions. Karen's work in particular has focused on how to support people living with persistent pain.





# WELCOME TO THE GRADUATE SCHOOL

Support is crucial to your postgraduate research studies. Our Graduate School provides specialist guidance that will help you make the most out of your doctorate, so you won't just be an expert on paper.

At the Graduate School, you'll join a research community undertaking MPhil and PhD degrees and Professional Doctorates in a wide range of research specialisms.

We will provide you with:

- **Induction days for new students**
  - Discover your future and get to know the experts and professionals that will be alongside you on your journey.
- **Professional development workshops throughout the year**
  - Take advantage of hints and tips to mould your research strategy and thesis writing.
- **Postgraduate research conference**
  - Learn from like-minded researchers who've contributed to their fields of study.
- **Social events**
  - Meet researchers, share experiences and take advantage of the Staffordshire University social facilities.

## GET INVOLVED

The Graduate School Steering Group is a great way to make your mark at Staffordshire University. We encourage you to help us to improve our provision for research students and put on new and exciting events.

For more information on our Graduate School, visit:  
[www.staffs.ac.uk/research/postgraduate-research/the-graduate-school](http://www.staffs.ac.uk/research/postgraduate-research/the-graduate-school)



# Brilliant Friendly Curious



## VISIT US

## POSTGRADUATE OPEN DAYS

Whether you're looking to research a subject you're passionate about, increase your earning potential, change career path completely or just unlock your true potential then it's time to pursue postgraduate study at Staffordshire University.

You can find out more about studying with us at one of these Postgraduate Open Events in 2020.

WEDNESDAY 04 MARCH 2020 4PM – 7PM  
WEDNESDAY 20 MAY 2020 4PM – 7PM  
WEDNESDAY 05 AUGUST 2020 4PM – 7PM  
WEDNESDAY 25 NOVEMBER 2020 4PM – 7PM

Science Centre, Leek Road, Stoke-on-Trent, ST4 2DF.

Our Postgraduate Open Events are the perfect opportunity to find out everything you need to know about studying with us, all in one place.

You will have the chance to:

- Talk to our academic tutors and find out more about the course you're interested in
- Meet some of our current postgraduate students to discover more about student life and why we're #proudtobestaffs
- Get one-to-one advice and guidance from our expert student support, finance, careers and personal development teams
- Find out more about the application process, accommodation and nursery services
- Attend a series of talks or short tours to discover our state-of-the-art facilities

What are you waiting for?

Book a place on our Postgraduate Open Event today at [staffs.ac.uk/postgraduate](https://staffs.ac.uk/postgraduate) and take the first step to your future success.

### WE'RE FAMILY FRIENDLY!

Bring your kids along and keep them busy with our free activities and free fruit pots at our Nursery stand.



**'IT WAS GREAT TO SPEAK TO  
SOMEONE WHO HAD SO MUCH  
PASSION ABOUT THE SUBJECT  
I'M INTERESTED IN'**

Visitor feedback from our 27 November 2019  
Postgraduate Open Event.



### STAFFORDSHIRE UNIVERSITY LONDON OPEN DAYS

12 SEPTEMBER 2020 11AM – 4PM  
31 OCTOBER 2020 11AM – 4PM  
05 DECEMBER 2020 11AM – 4PM

Book a place at [dilondon.staffs.ac.uk/event](https://dilondon.staffs.ac.uk/event)



# A CITY OF OPPORTUNITY

## DINE

With more than 200 places to eat, our region caters for every taste. When it comes to booking a table, you'll never be short of options.

## STROLL

The great outdoors - including the Peak District, Hanley Park and Fenton Park - give you a chance to clear your mind in stunning surroundings.

## MOVE

Keep in shape with a range of sporting activities. Fenton Manor Sports Centre, Longton Rugby Club, Flip Out, and Northwood Stadium are all close by.

## SHOP

Browse for hours at INTU potteries, Trentham Shopping Village and Festival Retail Park. With major shopping centres and outlets to choose from, you'll always have the chance to grab a new outfit.

## RELAX

Take in the culture of Chatsworth House, feel the highs and lows of Championship football at the bet365 Stadium, or experience the white-knuckle thrills of Alton Towers Resort – the choice is yours.







# OUR CONNECTED CITY CAMPUS

When it comes to our vision for a city campus, we want you to be well connected. And that's exactly what you'll be – thanks to vibrant and dynamic teaching and learning facilities, convenient public transport links and incredible social areas.

Over the past decade we've invested over £100m in developing our Stoke-on-Trent campus, with projects such as:

- THE BEACON BUILDING** - A £5.5m teaching facility with a built-in bistro.
- CADMAN STUDIOS** - An £11m development housing audio and visual technology.
- THE SCIENCE CENTRE** - A £30m building packed with laboratories and dedicated to scientific innovation.
- THE STUDENT HUB** - A student services space with over £1m of features for your support.
- THE SMART ZONE** - A facility-filled dynamic designer-maker space.
- ESPORTS HUB** - A tech packed broadcasting and gaming facility.



## LINKING YOU WITH CUTTING-EDGE TECH

Connections put a man on the moon and planes in the sky. Yet without technology, none of this would have been possible. If you study in our dedicated £30m Science Centre, you'll get your hands on three floors of technology that's at the forefront of scientific research and development.

A short walk from our Science Centre is our Crime Scene House. This is a real house we use to replicate crime scenes, giving you practical experience in investigating and putting forensic theories to the test in a real-world environment.

## OUR CONNECTED CITY CAMPUS

On top of the millions of pounds we've spent transforming our city campus in Stoke-on-Trent, we're investing thousands more on the very latest digital technologies and creating exciting, highly flexible learning spaces.

Our goal is to make teaching and learning more inspiring and rewarding. Through our close links with Microsoft we also plan to ensure that, whatever your subject, you are equipped with the digital skills and professional certification you'll need to stand out to employers in the future world of work.

We are the first university in Europe, for example, to migrate our digital services to the Cloud, enabling you to access and work on your documents from any device, at any time.

We are the first university in the UK to equip you with a Digital Coach and Assistant called 'Beacon' making use of artificial intelligence to help support you and maximise your experience with us. Beacon can provide you with answers 24/7 via your mobile phone, help you find your way around campus and will even make personalised recommendations of activities and events which may be of interest to you.

Take a tour around our campus and you'll see that our vision to create a fully connected digital university is well under way. Yet while technology

plays a big part in our approach, we're not only bringing teaching to life with the help of large-screen monitors, touchscreens and interactive whiteboards, we're also combining advanced digital technologies with bright, modern classrooms and flexible seating arrangements. It's all part of our totally fresh approach to teaching that puts you, the student, at the centre of your studies.

Our Smart Zone provides students with the opportunity to experience a variety of leading-edge technologies such as 3D printing, augmented reality, robotics and drone flying.

Connected, digital learning encourages group work, participation and knowledge transfer. It means working side-by-side with lecturers, rather than simply listening to them. It even connects with the smart devices we all use every day, giving you the opportunity to watch video presentations, lesson tasters and tutorials on your smartphone, tablet or laptop, well ahead of lectures.

As you'd expect, connected, digital learning also means campus-wide Wi-Fi, so you aren't restricted to independent study in traditional learning environments. You can choose when and where you study. Whether that's in one of our vibrant social spaces, a quieter learning environment, or in your student halls – it's entirely up to you.







# STUDENT SUPPORT NETWORKS

Our fantastic community means you're constantly connected to a great support network. Our staff and services care. Whether it's a concern about money, a query about your studies or a personal issue - we are here to support you. The Student Support and Wellbeing team based in our Student Hub are always available to offer their time and support.

## THE STUDENT HUB

It's important to us that our students can get access to information, care and support on their terms. Our Student Hub is the place to go at our Stoke-on-Trent campus for any students that need advice and support, have a query, or are looking for careers support.

## BEACON

Beacon is your new friend in your pocket and is the first digital coach in any UK university. You can use Beacon to get your timetable, lecturer information, ask questions, get a new student card or bank letter, find a member of staff, or find activities on campus.

## THE MATURE, PARENT AND CARER NETWORK

The Mature, Parent & Carer Network is for any student parent or carer who is studying here at Staffordshire University. Every month there is a chance to meet up with fellow students in one of the Students' Union venues and it's an opportunity to relax, have a laugh and meet like-minded people.

The network is run by students, for students and delivers a wide range of family friendly events throughout the year, where students and their families will be able to meet up and have fun.

## STUDENT SUPPORT AND WELLBEING

It's important to us that as a student, you have access to support when you need it the most. Our friendly team of Support and Wellbeing Advisers are available to talk to confidentially about any issues or problems you may experience whilst studying.

## CHAPLAINCY AND SPIRITUAL WELLBEING

Faith is an important part of many lives; our Chaplaincy team are in place to support students from all faiths and none – they can provide valuable support in times of need, but also deliver events and activities that contribute to the life of our University. They also make a brilliant cup of tea!

## SUPPORT AT THE STUDENTS' UNION

Our excellent Students' Union is also available for all kinds of support, from job opportunities on campus to a 'Money Doctor' advice service.

## DAY-CARE NURSERY

We offer a full day care nursery. Registered as outstanding by Ofsted, our highly qualified team follows the early years foundation stage curriculum and offers special discounts to students.

You can find out more about the range of services that we offer to our diverse community at: [www.staffs.ac.uk/studentservices](http://www.staffs.ac.uk/studentservices)





# FACILITIES

When you're looking to study at postgraduate level, it's important to have access to the latest in digital facilities and technology.

With Staffordshire University you are assured that when you're on campus, you'll be using state-of-the-art innovative equipment in creative and professional environments. We are also committed to providing a vibrant campus life and recreational opportunities to welcome you into the university community.

**We are a place to build your future.**

## LIBRARIES

Everything you need under one roof. Our libraries are packed full of both offline and online reference materials, state-of-the-art computing facilities, and staff that can help with accessing resources and research. We have libraries at our various sites, but our largest is the Thompson Library based on the Stoke-on-Trent campus. The Thompson Library has 24/7 access and provides materials, tech and study zones. A new home-from-home for like-minded students of all levels.

## LEARNING SPACES

Whatever you're looking to study, it's important to do it in the right environment. From the specialist laboratories in our £30m Science Centre, to the network focused Collaboratory at Staffordshire Business School, you won't be short of places to develop your skills, sharpen your expertise and forward your career.

## NEXT-GENERATION LEARNING

To be the best, you need to learn using the latest technologies. Our digital facilities are second to none, we have the latest in TV, music, games design and motion capture suites in the £11.5m Cadman Studios. It's not just creative industries either, if you're looking to improve your presentational skills you can practise in the Digital Hub - a space that mirrors a casual, modern office environment. Honing your event planning skills? There's an Esports Hub too, which replicates the growing industry's technical and digital facilities.

## GYM/SPORTS FACILITIES

From industry-standard sports therapy and science technology, to recreational gym and sports equipment – Staffordshire University has it all. Hone your skills in our Peak Condition Clinic and Biomechanics Facilities, or take time-out from your studies by using our Sir Stanley Matthews Sports Centre, that includes a newly equipped sports hall, functional training rooms, and an 80-station gym with cardio equipment.

## SMART ZONE

Be a part of the future of technology in our Smart Zone, a bustling centre of invention, innovation and creation. The area spans over two floors, and houses dedicated workshop space, the latest in digital technology, and high-end computing facilities. The brand-new £1.3m space is packed with facilities and is the biggest collaboration space on campus, connecting potential with expertise and problems with solutions.

## FOOD AND DRINK OUTLETS

Need a place to unwind after a hard day on the books? We have various bars and eateries for you to refuel at. Whether you're looking for a casual coffee at Squeezebox, pub-style dining and entertainment at The Ember Lounge, or a relaxed bar atmosphere at The Verve, we've got it covered.

## CAREERS STUDIO

Achieve your career goals with the support and guidance of our Careers Studio. Our expert team can help you develop your broader skills, brush up on your CV, enhance your interview technique and explore your career options ready for you to take that next step after graduation. Remote support also freely available to anyone not physically on campus.

## CLUBS AND SOCIETIES

The Students' Union has hundreds of clubs and societies that can help you connect with other students that share your interests, from the Law Society to the Video Games Society. The Postgraduate Research society is a thriving community that allows research – based postgraduate students to network, share experiences and put on events.



# STAFFORDSHIRE UNIVERSITY LONDON



## MASTER MA ESPORTS

For more information visit.  
[www.dilondon.staffs.ac.uk](http://www.dilondon.staffs.ac.uk)



When it comes to the latest tech industries, Staffordshire University has always been ahead of the game. We've always been known for our outstanding games design courses and in 2018 we became the first university in the world to offer a degree in esports.

Fast forward two years and we have conquered the European capital of technology with our next-generation university: Staffordshire University London.

Staffordshire University London's Digital Institute is based in Queen Elizabeth Olympic Park on the Here East campus, and is at the heart of digital and creative media. It's surrounded by the latest pioneering businesses and masters of broadcasted entertainment, such as BT TV Studios, Sports Interactive, and the Copper Box Arena – the campus combines big city vibrancy and networking with a hi-tech open plan study experience, to set you for careers of the future.

The courses are backed up with industry-experienced staff, along with incredible digital and broadcasting facilities.

With a games lab, cyber studio and esports arena you will feel like you're already at work. What's more we have a gallery set up that rivals professional arenas across the country. There are also places to relax, collaborate and plan your career in style.

Take the opportunity to study a course with all the benefits of a well-established Top 40 UK University, with the networking power and opportunity that comes with living, working and studying in the capital.



**JAMIE WOOTON**  
ESPSPORTS STUDENT

"When I found out about the facilities, I thought they were just second to none, they were just really a step above anything else that was on offer at any other university. I think studying at the Digital Institute will really benefit my career in the long run because I'm going to be developing so many skills as well as meeting so many different industry figures..."

Take the lead and become a specialist in the industry of tomorrow.



## STAFFORDSHIRE UNIVERSITY LONDON OPEN DAYS

12 SEPTEMBER 2020 11AM – 4PM  
31 OCTOBER 2020 11AM – 4PM  
05 DECEMBER 2020 11AM – 4PM

Book a place at [dilondon.staffs.ac.uk/event](http://dilondon.staffs.ac.uk/event)



# THE COST OF SUCCESS

Postgraduate fees might sound daunting at first but remember, you aren't just investing in us, you're investing in your future.

We want everyone to have a fantastic postgraduate experience with us, no matter what their financial status may be - so be sure to check the following support section for more information on what financial help is available, and exactly where to go to discover more.



## POSTGRADUATE FEES 2020/2021

### TAUGHT POSTGRADUATE PROGRAMMES

Fees for Home/EU students are set in bands depending on what facilities and resources are required.

Band 1	Classroom based subjects	£7,850
Band 2	Technical and laboratory-based subject	£9,085
Band 3	Master of Business Administration	£11,000
	Law LPC	£10,900
	Law LPC and LLM combined	£12,300
Band 4	Staffordshire University London	£9,750

Fees for part-time students are charged on a pro-rata basis related to the number of credits taken per year. For specific fee information, please visit the individual course pages on our website.

## POSTGRADUATE RESEARCH

Full-time research degree fees for Home/EU students are set in accordance with Research England guidance at £4,327 (2019/20). A pro-rata fee is charged to part-time students. Professional doctorate fees vary depending on what facilities and resources are required.

Postgraduate Research	£4,327
Professional Doctorate in Education	£4,327
Professional Doctorate in Health Psychology	£6,300
Professional Doctorate in Healthcare Science	£6,300

## INTERNATIONAL POSTGRADUATE FEES 2020/2021

Postgraduate Taught Standard	£14,500
Law LPC	£10,900
Law LPC and LLM Combined	£12,300
MBA	£15,500
Postgraduate Research	£12,500
Staffordshire University London	£16,500



## FINANCIAL SUPPORT

### MASTER'S LOAN

If you're starting a Masters course, whether studying full or part-time, you could get a Master's Loan of up to £11,222 to help with your course fees, study expenses or living costs.

Master's Loans are available for many of our postgraduate taught degrees and are provided by Student Finance.

You don't need an offer of a place to apply and you can even apply if you have an existing undergraduate loan.

For more information about the Master's Loan and eligibility criteria please visit our website or [gov.uk/masters-loan](http://gov.uk/masters-loan)

### DOCTORAL LOAN

If you're starting a full, standalone doctoral course, such as a PhD or professional doctorate, you could get a Postgraduate Doctoral Loan of up to £26,445 to help with your course fees, study expenses or living costs.

Doctoral loans are available for many of our doctorate degrees and are provided by Student Finance. Other student loans won't affect your eligibility for a Doctoral Loan.

You don't have to hold an offer of a place to apply for a loan.

For more information about the Doctoral Loan and eligibility criteria please visit our website or [gov.uk/doctoral-loan](http://gov.uk/doctoral-loan)

If you have any queries about financial support for postgraduate students, please contact our Enquiries Team on +44 (0)1782 294400 or [enquiries@staffs.ac.uk](mailto:enquiries@staffs.ac.uk)

Loan information is correct at time of going to print. Please visit [gov.uk/postgraduate-loan](http://gov.uk/postgraduate-loan) and [slc.co.uk](http://slc.co.uk) for current information.

### ALUMNI DISCOUNT

If you've previously completed a Staffordshire University undergraduate or postgraduate taught degree (excluding HND and foundation degrees) you may be entitled to a discount of up to 25% off your postgraduate course fees (terms apply).

For more information on the alumni discount, see page 36.





# ALUMNI DISCOUNT

Good news, if you've previously completed a Staffordshire University undergraduate or postgraduate taught degree (excluding HND and foundation degrees) you may be entitled to a discount of up to 25% off your course fees.

The maximum discount rate for students commencing new course registrations in 2020/21 is 25%. To receive the full discount of 25% you must have progressed onto further study within two years of completing your previous studies. Students who progress onto further study more than two years after completing their previous studies will receive 10% off their course fees. Discounts will be reduced pro-rata if you leave the course and this results in a reduction in your fees.

Please note, alumni discount is reviewed annually, is subject to change, and cannot be applied to PGCE courses.

For more information on alumni discount, please visit:  
[www.staffs.ac.uk/courses/postgraduate/fees-and-funding](http://www.staffs.ac.uk/courses/postgraduate/fees-and-funding)





# OUR SUBJECT AREAS



At Staffordshire University we organise our courses into subject areas, which are then categorised into Schools.

Find out more about subject areas, visit: [www.staffs.ac.uk/courses/postgraduate](http://www.staffs.ac.uk/courses/postgraduate)



## SCHOOL OF COMPUTING AND DIGITAL TECHNOLOGIES

- COMPUTER SCIENCE
- FILM AND MEDIA
- GAMES DESIGN
- JOURNALISM AND DIGITAL CONTENT CREATION
- MUSIC



## SCHOOL OF CREATIVE ARTS AND ENGINEERING

- ART AND DESIGN
- DRAMA, PERFORMANCE AND THEATRE STUDIES
- ENGINEERING
- ENGLISH, CREATIVE WRITING AND PHILOSOPHY
- GEOGRAPHY AND ENVIRONMENT
- INTERNATIONAL STUDIES AND HISTORY



## SCHOOL OF HEALTH AND SOCIAL CARE

- ALLIED HEALTH
- NURSING AND MIDWIFERY



## SCHOOL OF LAW, POLICING AND FORENSICS

- FORENSICS AND POLICING
- LAW
- SOCIOLOGY, CRIMINOLOGY AND TERRORISM



## SCHOOL OF LIFE SCIENCES AND EDUCATION

- BIOLOGICAL, BIOMEDICAL AND HEALTHCARE SCIENCE
- EDUCATION AND TEACHER TRAINING
- PSYCHOLOGY AND COUNSELLING
- SPORT AND EXERCISE



## STAFFORDSHIRE BUSINESS SCHOOL

- ACCOUNTING AND FINANCE
- BUSINESS AND MARKETING
- ESPORTS





# ACCOUNTING AND FINANCE

STAFFORDSHIRE  
BUSINESS SCHOOL

Put yourself ahead of the competition in the economic industries with our postgraduate qualification in accounting and finance. Learn from internationally recognised experts, gain eligibility for the Chartered Institute of Management Accountants (CIMA) Master's gateway route and take advantage of our connections to global industries.

## POSTGRADUATE TAUGHT COURSES

**FT** MSc ACCOUNTING AND FINANCE

## POSTGRADUATE RESEARCH

We have research expertise in this subject area and welcome PhD proposals.



SCHOOL OF  
HEALTH AND  
SOCIAL CARE

# ALLIED HEALTH

Take care of your future with a postgraduate or professional qualification in a healthcare specialism. Whether you're a professional looking to get expertise in a particular area, or you want to improve your employability and break into the private health sector, we have the next-step you need.

## POSTGRADUATE TAUGHT COURSES

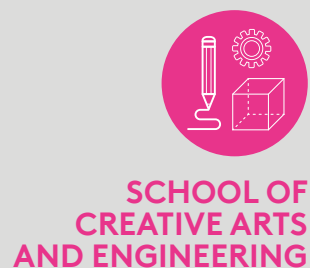
<b>PT/BL</b>	MSc ADVANCED FORENSIC PRACTICE (CUSTODY HEALTH PROFESSIONAL)
<b>PT/BL</b>	MSc ADVANCED FORENSIC PRACTICE (SEXUAL ASSAULT AND CUSTODY HEALTH PROFESSIONAL)
<b>PT/BL</b>	MSc ADVANCED FORENSIC PRACTICE (SEXUAL ASSAULT HEALTH PROFESSIONAL)
<b>PT/DL</b>	MSc MEDICAL EDUCATION
<b>PT</b>	MSc ADVANCED CLINICAL PRACTICE
<b>PT/DL/BL</b>	MSc HUMAN FACTORS FOR PATIENT SAFETY
<b>PT/BL</b>	MSc NEGOTIATED LEARNING

## POSTGRADUATE RESEARCH

We have research expertise in this subject area and welcome PhD proposals.



# ART AND DESIGN



Fuel your career passion and create a network of likeminded professionals in industry with a postgraduate qualification in Art and Design. Use our industry expertise and outstanding studio and workshop facilities to perfect your craft and become an expert in your field.

## POSTGRADUATE TAUGHT COURSES

**FT/PT** MA CERAMIC DESIGN

**FT/PT** MA/MSc ARTS AND CREATIVE TECHNOLOGIES  
(BY NEGOTIATED STUDY)

**FT** PGCE SECONDARY ART AND DESIGN

## POSTGRADUATE RESEARCH

We have research expertise in this subject area and welcome PhD proposals.



# BIOLOGICAL, BIOMEDICAL AND HEALTHCARE SCIENCE



Become the expert in the laboratory with a postgraduate qualification in Biological, Biomedical or Healthcare Sciences. Become a part of the next generation of scientists in our £30m Science Centre, with access to state-of-the-art lab equipment and research facilities.

## POSTGRADUATE TAUGHT COURSES

**FTBL/PTBL** MSc MOLECULAR BIOLOGY

**FT** PGCE SECONDARY BIOLOGY

**FTBL/PTBL** MA/MSc APPLIED RESEARCH

## POSTGRADUATE RESEARCH

**FTDL/PTDL** PROFESSIONAL DOCTORATE  
IN HEALTHCARE SCIENCE

We have research expertise in this subject area and welcome PhD proposals.







# BUSINESS AND MARKETING

STAFFORDSHIRE  
BUSINESS SCHOOL

Climb the executive ladder and be the figurehead in future business decisions with a postgraduate degree in business or marketing. Take advantage of our professionally experienced academics, become an expert in business tools and strategies of the future and stay ahead of fast-moving industries.

## POSTGRADUATE TAUGHT COURSES

**PTBL** DBA BUSINESS ADMINISTRATION

**FT/PT/PTBL** MBA BUSINESS ADMINISTRATION

**FTBL/PTBL** MSc CUSTOMER AND DATA ANALYTICS

**FT/PT** MSc DIGITAL MARKETING MANAGEMENT

**FT/PT** MA HUMAN RESOURCE MANAGEMENT

**FT** MSc INTERNATIONAL BUSINESS MANAGEMENT

## POSTGRADUATE RESEARCH

We have research expertise in this subject area and welcome PhD proposals.



# COMPUTER SCIENCE

SCHOOL OF  
COMPUTING AND  
DIGITAL TECHNOLOGIES

Learn the computing skills you need to become an invaluable asset to modern businesses in our BCS accredited postgraduate computer science courses. We have state-of-the-art Cisco Labs, isolated testing networks, along with cloud computing facilities and flexible course delivery to ensure you get to where you want to be in your career.

## POSTGRADUATE TAUGHT COURSES

**FT/FTDL/PTDL** MSc COMPUTER SCIENCE

**FT/FTDL/PTDL** MSc COMPUTER SCIENCE (BUSINESS COMPUTING)

**FT/FTDL/PTDL** MSc COMPUTER SCIENCE  
(COMPUTER NETWORKS AND SECURITY)

**FT/FTDL/PTDL** MSc COMPUTER SCIENCE (CYBER SECURITY)

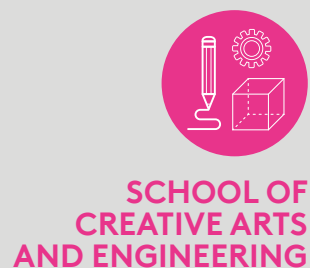
**FT/FTDL/PTDL** MSc COMPUTER SCIENCE (SOFTWARE ENGINEERING)

## POSTGRADUATE RESEARCH

We have research expertise in this subject area and welcome full-time, part-time and distance learning PhD proposals for MPhil/PhD Computer Science.



# DRAMA, PERFORMANCE AND THEATRE STUDIES



Explore a diverse range of collaborative artistic approaches and theatre projects to unlock, develop and deepen your potential in the industry. Play a leading role in the theatre of tomorrow gain in-depth understanding of different processes of theatre-making, performance traditions and methods of writing and directing.

## POSTGRADUATE TAUGHT COURSES

**FT** MA ADVANCED THEATRE PRACTICE\*

## POSTGRADUATE RESEARCH

We have research expertise in this subject area and welcome PhD proposals.

\*Subject to validation.



# EDUCATION AND TEACHER TRAINING



You could be just a course away from teaching the next generation of artists, professionals and scientists. We offer a selection of PGCE or postgraduate qualifications which enable you to work with us and schools across the country to give you the knowledge and experience you need to kick-start your career and change the world... one class at a time.

## POSTGRADUATE TAUGHT COURSES

**PT** DOCTOR OF EDUCATION

**FT/PT** MA EDUCATION

**PT** PGCERT HIGHER AND PROFESSIONAL EDUCATION

**FT** PGCE POST-COMPULSORY EDUCATION AND TRAINING

**FT** PGCE PRIMARY (GENERAL)

**FT** PGCE PRIMARY WITH PE SPECIALISM

**FT** PGCE SECONDARY ART AND DESIGN

**FT** PGCE SECONDARY BIOLOGY

**FT** PGCE SECONDARY BUSINESS

**FT** PGCE SECONDARY COMPUTER SCIENCE

**FT** PGCE SECONDARY ECONOMICS AND BUSINESS EDUCATION

**FT** PGCE SECONDARY ENGLISH

**FT** PGCE SECONDARY GEOGRAPHY

**FT** PGCE SECONDARY MATHEMATICS

**FT** PGCE SECONDARY PHYSICAL EDUCATION

## POSTGRADUATE RESEARCH

We have research expertise in this subject area and welcome PhD proposals.







## SCHOOL OF CREATIVE ARTS AND ENGINEERING

# ENGINEERING

Get up to date with the latest in technologies, systems and design with one of our postgraduate engineering courses. Use state-of-the-art equipment and software packages, learn with experienced forward-thinking academics and become an expert in areas like renewable technologies, low carbon manufacturing or smart technologies.

### POSTGRADUATE TAUGHT COURSES

**FT/FTPL** MSc AERONAUTICAL ENGINEERING

**FT/FTPL/PT** MSc AUTOMOTIVE ENGINEERING

**FT/FTPL/PT** MSc ELECTRICAL ENGINEERING  
AND RENEWABLE ENERGY SYSTEMS

**FT/FTPL** MSc ELECTRONIC AND  
TELECOMMUNICATION ENGINEERING

**FT/FTPL/PT** MSc MECHANICAL ENGINEERING  
AND SUSTAINABLE ENERGY TECHNOLOGIES

**FT/FTPL/PT** MSc ROBOTICS AND SMART TECHNOLOGIES

**PT/DL** MSc PROFESSIONAL ENGINEERING

### POSTGRADUATE RESEARCH

We have research expertise in this subject area and welcome PhD proposals.



## SCHOOL OF CREATIVE ARTS AND ENGINEERING

# ENGLISH, CREATIVE WRITING AND PHILOSOPHY

Explore the written word in our creative writing or philosophy courses. Take advantage of work experience opportunities, experienced and published academics and superb literary facilities to further your career in specialist areas.

### POSTGRADUATE TAUGHT COURSES

**FT/PT** MA/MSc ARTS AND CREATIVE TECHNOLOGIES  
(BY NEGOTIATED STUDY)

**FT/PT** MA CONTINENTAL PHILOSOPHY

**FT** PGCE SECONDARY ENGLISH

### POSTGRADUATE RESEARCH

We have research expertise in this subject area and welcome PhD proposals.





## STAFFORDSHIRE BUSINESS SCHOOL

# ESPORTS

Develop your expertise in the business side of the fastest growing industry of today in our postgraduate esports course. Use our bespoke Esports Hub and work with live briefs, design small and large scale esports events and work on research projects to uncover new knowledge in this emerging industry.

### POSTGRADUATE TAUGHT COURSES

**FT** MA ESPORTS

### POSTGRADUATE RESEARCH

We have research expertise in this subject area and welcome PhD proposals.



## SCHOOL OF COMPUTING AND DIGITAL TECHNOLOGIES

# FILM AND MEDIA

Take advantage of our postgraduate opportunities to bolster your expertise in the creative and entertainment technology industries. Get ahead in our state-of-the-art studios with our strong and varied research team that will support you in digital creativity in film and media technology.

### POSTGRADUATE TAUGHT COURSES

**FT** MA FILM PRODUCTION (WITH SPECIALIST PATHWAYS)\*

**FT/PT** MA/MRes ENTERTAINMENT TECHNOLOGIES\*

### POSTGRADUATE RESEARCH

We have research expertise in this subject area and welcome full-time and part-time PhD proposals for MPhil/PhD in Film, Media and Music.

\*Course is subject to approval.





# FORENSICS AND POLICING



Our Forensic degrees are taught by professionals with a wealth of expertise, who have worked as forensic practitioners and bring their experience into teaching on this course. You will utilise our laboratories to develop advanced skills in the analysis and interpretation of evidence, gain experience in crime scene analysis techniques at our Crime Scene House and practical skills in presenting evidence in our courtrooms.

## POSTGRADUATE TAUGHT COURSES

<b>FTBL/PTBL</b>	MA/MSc APPLIED RESEARCH
<b>FT/PT</b>	MSc DIGITAL FORENSIC INVESTIGATION
<b>FTBL/PTBL</b>	MSc FORENSIC SCIENCE

## POSTGRADUATE RESEARCH

We have significant research expertise in Forensic Science and Policing and would welcome PhD proposals in these disciplines. We currently have PhD researchers undertaking projects in areas such as policing modern slavery, sexual offence investigations, DNA recovery and interpretation, the identification of human remains, the analysis of synthetic cannabinoids, microplastic analysis, fingerprint examination, handwriting analysis, investigation of firearms and forensic archaeology.



If you wish to study the Applied Research degree, you can choose to tailor your degree to areas such as Policing or Forensic Investigation, by opting to study modules, gain applied experience and undertake your research project in these areas.

# GAMES DESIGN



Get the expertise you need to take control of the design studio in our postgraduate games design course. Get access to the latest hardware and software in our Epic Games lab, plus industry connections and work experience opportunities that move your career to the next level.

## POSTGRADUATE TAUGHT COURSES

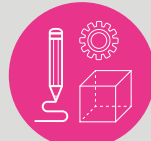
<b>FT/PT</b>	MSc 3D COMPUTER GAMES DESIGN
<b>FT/PT</b>	MA/MRes ENTERTAINMENT TECHNOLOGIES*

## POSTGRADUATE RESEARCH

We have research expertise in this subject area and welcome full-time and part-time PhD proposals for MPhil/PhD Digital Design and Technologies.

\*Course is subject to approval.





SCHOOL OF  
CREATIVE ARTS  
AND ENGINEERING

## GEOGRAPHY AND ENVIRONMENT

Research your way to a better tomorrow with a postgraduate degree in geography. Our geography experts have years of real-world experience in the field to ensure that whatever your specialism or area of interest, they can help you make an impact in your future career.

### POSTGRADUATE RESEARCH

We have research expertise in this subject area and welcome PhD proposals.



SCHOOL OF  
CREATIVE ARTS  
AND ENGINEERING

## INTERNATIONAL STUDIES AND HISTORY

Take your career to the world stage with one of our postgraduate degrees in international studies and history. No matter where your career is taking you, you can get the extra edge with one of our flexible distance learning or part-time courses that are designed around your commitments and workload.

### POSTGRADUATE TAUGHT COURSES

FTDL/PTDL	MA INTERNATIONAL HISTORY
PTDL	MA INTERNATIONAL POLICY AND DIPLOMACY
PTDL	MA INTERNATIONAL RELATIONS
PTDL	MA INTERNATIONAL RELATIONS AND RUSSIAN STUDIES
FT/PT/ FTDL/PTDL	MA INTERNATIONAL SECURITY AND COOPERATION
PTDL	MA INTERNATIONAL RELATIONS AND CENTRAL ASIAN STUDIES
FT/PT	MSc / MA FORENSIC ARCHAEOLOGY AND GENOCIDE INVESTIGATION*

\*Subject to validation.

### POSTGRADUATE RESEARCH

We have research expertise in this subject area and welcome PhD proposals.





# JOURNALISM AND DIGITAL CONTENT CREATION



SCHOOL OF  
COMPUTING AND  
DIGITAL TECHNOLOGIES

Back up your creative and journalistic prowess with expert skills and professional qualifications in one of our journalism or digital content creation postgraduate degrees. Get an edge on the career competition in our fully-equipped broadcast suites, using the latest creative editing packages from the likes of Adobe.

## POSTGRADUATE TAUGHT COURSES

**FT** MA JOURNALISM

**FT** MA SPORTS JOURNALISM

**FT** MA DIGITAL CONTENT CREATION\*

## POSTGRADUATE RESEARCH

We have research expertise in this subject area and welcome full-time and part-time PhD proposals for MPhil/PhD in Film, Media and Music.

\*Course is subject to approval.



SCHOOL OF  
LAW, POLICING  
AND FORENSICS

# LAW

Our postgraduate Law degrees will help prepare you for a future within the Legal Profession. Our Legal Practice degrees provide you with practical experience in applying law to case scenarios so you are ready to make a difference to whatever field of Law you choose to practice.

## POSTGRADUATE TAUGHT COURSES

**FT/FTDL/PT/PTDL** LLM LEGAL PRACTICE

**FT/FTBL/PT/PTBL** PGDIP LEGAL PRACTICE

## POSTGRADUATE RESEARCH

We have significant research expertise across the Law disciplines and would welcome PhD proposals in this area. We currently have PhD researchers undertaking projects in areas such as Commercial Surrogacy, Human Rights Law, Judicial Discretion, International Law and Divorce Law.





## SCHOOL OF COMPUTING AND DIGITAL TECHNOLOGIES

# MUSIC

Take the next step in the music industry with a postgraduate degree. From technical skills in our facility packed music studios to advanced portfolios, we can give you the knowledge and skills you need to forward your career in the music industry.

### POSTGRADUATE TAUGHT COURSES

**FT/PT** MA MUSIC PRODUCTION

**FT/PT** MSc MUSIC TECHNOLOGY

**FT/PT** MA/MRes ENTERTAINMENT TECHNOLOGIES\*

### POSTGRADUATE RESEARCH

We have research expertise in this subject area and welcome full-time and part-time PhD proposals for MPhil/PhD in Film, Media and Music.

\*Course is subject to approval.



## SCHOOL OF HEALTH AND SOCIAL CARE

# NURSING AND MIDWIFERY

Take the next stage in your career in healthcare with one of our professional qualifications or postgraduate courses in nursing and midwifery. Our courses are professionally accredited, and we work with our partners in the NHS and healthcare services to ensure you'll get the most update and relevant skills and knowledge to launch your future.

### POSTGRADUATE TAUGHT COURSES

**PT** MSc ADVANCED CLINICAL PRACTICE

**PTDL/BL** MSc HUMAN FACTORS FOR PATIENT SAFETY

**PT/BL** MSc NEGOTIATED LEARNING

### POSTGRADUATE RESEARCH

We have research expertise in this subject area and welcome PhD proposals.





# PSYCHOLOGY AND COUNSELLING



Delve deeper into the mind and become a specialist in one of our postgraduate psychology and counselling courses. Choose from a range of different study options to suit your needs and take advantage of our Psychology Labs and other specialist facilities.

## POSTGRADUATE TAUGHT COURSES

<b>FTBL/PTBL</b>	MA/MSc APPLIED RESEARCH
<b>PTDL</b>	MSc COGNITIVE BEHAVIOURAL THERAPY*
<b>FT/PT</b>	MSc FOUNDATIONS OF CLINICAL PSYCHOLOGY
<b>FT/PT</b>	MSc HEALTH PSYCHOLOGY
<b>FT/PT</b>	MSc PSYCHOLOGY
<b>PT</b>	MSc PSYCHOTHERAPEUTIC COUNSELLING
<b>PT</b>	CERTIFICATE IN COUNSELLING**
<b>PT</b>	INDIVIDUAL MODULES INTRODUCTION TO BASIC COUNSELLING SKILLS**

## POSTGRADUATE RESEARCH

<b>FT</b>	PROFESSIONAL DOCTORATE IN CLINICAL PSYCHOLOGY
<b>FT/PT</b>	PROFESSIONAL DOCTORATE IN HEALTH PSYCHOLOGY

We have research expertise in this subject area and welcome PhD proposals.

\*Top-up. \*\*Professional courses.



# SOCIOLOGY, CRIMINOLOGY AND TERRORISM



If you would like to understand contemporary social issues and learn how to tackle injustices in society, our Sociology and Social Justice degree is ideal for you. If you would prefer to learn more about the criminological issues in contemporary society, the global perspectives of crime or the challenges surrounding terrorism, extremism and radicalisation in today's world, one of our Criminology courses would be a great choice for you.

## POSTGRADUATE TAUGHT COURSES

<b>FT/PT</b>	MSc CRIMINOLOGY AND CRIMINAL JUSTICE
<b>FTBL/PTBL</b>	MA SOCIOLOGY AND SOCIAL JUSTICE
<b>FTDL/PTDL</b>	MA TERRORISM, CRIME AND GLOBAL SECURITY
<b>FTDL/PTDL</b>	MA TRANSNATIONAL ORGANISED CRIME

## POSTGRADUATE RESEARCH

We have significant research expertise across the Criminology and Sociology disciplines and would welcome PhD proposals in this area. We currently have PhD researchers undertaking projects in areas such as Domestic Violence, Gendered Violence, the impact of the Prevent strategy, Incarceration experiences, Human Trafficking, recovery from dual diagnosis, LGBTQ+ experiences, violence within prisons, the experiences of Muslim women and provision for women released from prison.



# SPORT AND EXERCISE



Get qualified in advanced areas of sport and exercise with one of our postgraduate courses. Study from anywhere in the world with a variety of distance learning courses and get the expertise you need to make the most out of your career in sport.

## POSTGRADUATE TAUGHT COURSES

<b>FTBL/PTBL</b>	MA/MSc APPLIED RESEARCH
<b>PTDL</b>	MSc APPLIED SPORT AND EXERCISE SCIENCE
<b>PTDL</b>	MSc CLINICAL BIOMECHANICS
<b>FTDL/PTDL</b>	MSc SPORT AND EXERCISE PSYCHOLOGY
<b>PTDL</b>	MSc SPORTS COACHING
<b>FT</b>	PGCE PRIMARY WITH PE SPECIALISM
<b>FT</b>	PGCE SECONDARY PHYSICAL EDUCATION

## POSTGRADUATE RESEARCH

We have research expertise across sport and exercise psychology, sport and exercise science, clinical biomechanics and sports coaching in this subject area and welcome PhD proposals.



# HOW TO APPLY

If you're looking to study a taught postgraduate programme you can apply to us directly through our website.



**1** FIND YOUR COURSE AT [staffs.ac.uk/postgraduate](https://staffs.ac.uk/postgraduate)

**2** CHECK ENTRY REQUIREMENTS

**3** CHECK FOR CLOSING OR STARTING DATE

**4** APPLY ONLINE AT [staffs.ac.uk](https://staffs.ac.uk) VIA THE COURSE PAGE

**5** TRACK YOUR APPLICATION THROUGH OUR ONLINE APPLICANT PORTAL

## CURRENT STAFFORDSHIRE UNIVERSITY STUDENT?

If you are a current final year student at the University, you may be able to secure an early offer for your chosen area of postgraduate study without completing a detailed application, using PG Apply.\* Contact your course leader for more information.

## LOOKING TO STUDY A PGCE?

If you're looking to apply for teacher training, then you will need to apply through the UCAS Teacher Training System at [ucas.com](https://ucas.com)

## ENQUIRIES

Our dedicated enquiry experts are on hand to guide you throughout the application process. We're here to help.

Tel: +44 (0)1782 294400 Email: [enquiries@staffs.ac.uk](mailto:enquiries@staffs.ac.uk)



# HOW TO APPLY FOR A PHD

If you're interested in studying a PhD with us, we ask you to follow an application process so we can ensure we're able to meet your specific needs and support your research topic.

IF YOU'RE LOOKING TO STUDY A PROFESSIONAL DOCTORATE, YOU CAN APPLY DIRECTLY THROUGH THE INDIVIDUAL COURSE PAGES ON OUR WEBSITE.

## 1

**Please check our areas of expertise in which we can offer doctoral supervision.** We'll only offer a research degree where we have relevant expertise to ensure you get the right academic support. We also have a list of ready to go PhD projects designed by our experts, which means that the research proposal is already written.

## 2

**Fill in our online MPhil/PhD enquiry form.** We'll put you in touch with a member of staff to have an informal conversation about your proposed research and qualifications. This is to establish that we have expertise and facilities in your area, and to help you design your research proposal.

## 3

**If the discussion is promising, you'll be invited to apply online.** You'll need to upload your research proposal as part of your application and you'll be asked for two references, preferably from a previous place of education or your place of work, and to provide transcripts of previous study.

If you're an international student requiring a visa, the application form will gather the necessary information for us to run preliminary checks on your eligibility.

## 4

**If everything is in order with your application, we'll invite you for a formal interview (this can be by video link).**

If the academic school recommend the offer of a place on a research degree, this will be ratified by the Graduate School and then you'll be contacted with details of the offer and how to accept.

**UNDERTAKING A PHD IS A BIG DECISION. OUR GRADUATE SCHOOL PROVIDES SPECIALIST SUPPORT FOR OUR DOCTORAL RESEARCHERS, BEGINNING WITH YOUR APPLICATION TO STUDY WITH US AND CONTINUING THROUGHOUT YOUR RESEARCH STUDY.**

For more information about the Graduate School, see page 18.



# POSTGRADUATE TESTIMONIALS

Whether you're looking to continue your studies or climb the career ladder, are working full-time or have family responsibilities, we make postgraduate study accessible for all. But don't just take our word for it, hear from some of our graduates about their postgraduate experience with us.

## RACHEL SHELTON

GRADUATE, PGCE SECONDARY ECONOMICS  
AND BUSINESS EDUCATION

*"Attending Staffs Uni PGCE course meant that I would be learning the most up to date principles and practices, as well as developing the latest skills to teach in secondary schools. In addition, I could see the course had high standards, a top-quality qualification provided value for money as the award was direct from the University."*

## SUZANNE STRUDWICK

HEAD COACH WOMEN'S GOLF  
CARSON-NEWMAN UNIVERSITY  
GRADUATE MSc SPORTS COACHING

*"Based in the USA as a full time NCAA College Head Golf Coach I researched for over a year to find the right MSc program to fit my career, experience and passion for advanced learning. The online MSc in Sports Coaching delivered. As an adult learner, it was a huge challenge for me to return to education, but the excellent staff and fellow students were incredibly supportive."*

## SZILVIA VAS

GRADUATE, MSc & PROFESSIONAL  
DOCTORATE IN HEALTH PSYCHOLOGY

*"I really loved the interactive aspects of teaching; we received a great amount of support from the lecturers. The lecturers were always friendly, very well prepared and made the sessions enjoyable."*

## RICARDO WINKWORTH

GRADUATE, MA INTERNATIONAL HISTORY

*"The faculty at Staffordshire are all dedicated, friendly and extremely knowledgeable and passionate about their chosen field. I was proud and delighted to have completed my Postgraduate degree last year."*

## KRISHNA KUMAR CHELLAPPA

GRADUATE, MSc COMPUTER SCIENCE

*"The teaching staff are highly qualified, subject matter experts and have made it a great learning experience."*

## MOLLY ANDRUSKEVICIUS

GRADUATE, MA JOURNALISM

*"The course wasn't just about getting the best grades, it was about giving you the right skills and experience needed to establish a career path. I got my first job before I'd finished my course and the lecturers bent over backwards to help me."*

## RICHARD BRETHERICK

GRADUATE, MA INTERNATIONAL  
POLICY AND DIPLOMACY

*"I would strongly recommend the International Studies programme at Staffordshire University. The program is structured so that the pace of learning is clearly defined and the student understands what needs to be done on a weekly basis. For those in full time employment, that means that studies can be planned according to your daily routine. Faculty staff won't let you drop behind, the support is always there to help you reach the finish line."*

## LAURA PLANT

GRADUATE, MA CERAMIC DESIGN

*"I generally worked one day a week whilst studying for my Masters, which was manageable for most of the course. I found planning my time - so I made the most of my time in university - helped me with juggling both. Knowing what you want to achieve from the course is also important so you can prioritise."*

## DR LOUISE ELIZABETH THORNTON

GRADUATE, DOCTOR OF EDUCATION

*"I would highly recommend the EdD course at Staffordshire University because the diversity of course content, staff support and guidance are outstanding. The course challenges you mentally and emotionally but this in turn assists in producing inspirations for better research."*

## JOE DIXON

PERFORMANCE PSYCHOLOGIST  
STOKE CITY FOOTBALL CLUB  
GRADUATE, MSc SPORT AND EXERCISE  
PSYCHOLOGY

*"My time on the MSc Sport and Exercise Psychology at Staffordshire University was extremely rewarding in terms of the skills I developed, the quality of the teaching, and the overall level of enjoyment I experienced. The distance learning aspect of the course was unique and challenged me to take ownership of my work whilst having fantastic interactive online resources available to communicate and share ideas with fellow students and tutors."*

## CHARLOTTE ORPHANAU

GRADUATE, PHD FORENSIC SCIENCE

*"When I was first looking at universities to study forensic sciences, I found the facilities here were so much better compared to everywhere else. It's such a welcoming and nice unit. The support from the lecturers is fantastic, and it's definitely worth coming here."*



# TOP 40

UK UNIVERSITY

37th of 121 institutions in the  
Guardian League Tables 2020

.....

# OUTSTANDING RESEARCH

78% OF OUR RESEARCH IS OF  
INTERNATIONAL STANDARD OR BETTER

Research Excellence Framework (REF)

.....

# SHORTLISTED FOR UNIVERSITY OF THE YEAR

The Times and The Sunday Times  
Good University Guide 2020



For more detailed information on courses or postgraduate study  
at Staffordshire University visit: [www.staffs.ac.uk/postgraduate](http://www.staffs.ac.uk/postgraduate)

