

BE THE CHANGE

CONNECT WITH A CAREER TO CHANGE THE WORLD

UNDERGRADUATE PROSPECTUS 2022



CONTENTS

3	Your Invitation	36	Teaching With A Difference
4	An Award-Winning Institution	38	The Students' Union
6	Application Journey	42	The Places To Be
8	5 Ways To Join Us	44	Student Support Networks
10	A Journey Of Change	46	Your Future Career
12	Our Unique Learning Experience	48	Challenge Your Body
14	Visit Us	50	High Performance Academy
16	Our Evolving City Campus	52	Researching A Better Tomorrow
18	Connecting You To A Digital Future	54	Higher And Degree Apprenticeships
20	A Catalyst For Change	58	Fees And Finance
22	The World Is Waiting	60	UCAS Points And What They Mean
24	Life-Changing Healthcare Education	62	Entry Requirements
28	Staffordshire University London	64	What Can I Study?
32	Home Sweet Home (Accommodation)	146	Our Open Days

CONNECT WITH US DIGITALLY



Throughout the prospectus you'll find windows that contain unique QR codes. Scan these codes with the QR reader on your device camera and connect with the most up-to-date areas on our website. Plus, webpages and video playlists are detailed by these icons within the windows, so you can choose which type of content to immerse yourself in.



The contents of this guide are correct at the time of going to press. However, please check our website www.staffs.ac.uk before making an application in case there are any changes to the subject area or course you are interested in, or to the other facilities and services described here. Where there is a difference between the content of this guide and our website, the content of the website take precedence and represent the basis on which we intend to deliver our services to you.



Liz Barnes

Professor Liz Barnes CBE DL
Vice-Chancellor and
Chief Executive
Staffordshire University

YOUR INVITATION

FROM PROFESSOR LIZ BARNES CBE DL, VICE-CHANCELLOR AND CHIEF EXECUTIVE OF STAFFORDSHIRE UNIVERSITY

On behalf of everyone at Staffordshire University, I invite you to join us for the next stage of your educational journey and become a force for positive change.

Here at Staffordshire University, we are proud of our heritage but we also understand the importance of staying ahead of the curve – especially when it comes to digital skills and employability. It is for this reason we are constantly honing our course offering and implementing innovative tools and technologies that ensure our students have a competitive edge when they graduate.

Staffordshire University's forward-thinking approach has attracted accolades from numerous awarding bodies. Our TEF Gold-rated institution is ranked in the top 15 for both Teaching Quality and Social Inclusion in the Times and Sunday Times Good University Guide 2021, and we also placed in the top 250 globally in the THE Young University Rankings 2020.

This is, in part, because we are constantly growing and improving our exciting facilities to add value to your future. Launched in 2019, the Staffordshire University London Digital Institute continues to deliver future-focused courses from the heart of Europe's tech capital; there's been £5.8 million invested in our Centre for Health Innovation, adding cutting-edge digital simulation and clinical immersion suites in Stafford; and we have developed The Catalyst – a £40 million apprenticeships and digital skills hub – to serve both students and businesses across Stoke-on-Trent and the wider region.

We have already invested well over £100 million across our campuses and we have no intention of slowing down, but state-of-the-art facilities are only part of what our University has to offer. By placing digital development at the centre of all our courses, guaranteeing work experience opportunities for our students, and delivering flexible teaching and learning through cloud connectivity, we can ensure you have the knowledge, skills and experience employers are looking for when you graduate.

In this prospectus, you will find a broad range of information about our connected campuses, careers-centred subjects, and a host of additional elements that make the Staffordshire University student experience truly unparalleled. However, the only way to fully understand why our award-winning institution is the best choice for your future is to experience it first-hand, so please come to one of our Open Days to explore our industry-standard facilities and to meet our brilliant and friendly students and academics in person.

By aligning your personal journey with that of Staffordshire University's connected community, you have a golden opportunity to make your mark on the world whilst cementing your future success.

Whoever you are and wherever you're from, this is your invitation to be part of something special.

BE MORE THAN A STUDENT, BE THE CHANGE.

AN AWARD-WINNING INSTITUTION



RATED GOLD FOR TEACHING EXCELLENCE

Teaching Excellence Framework (TEF)

SHORTLISTED FOR UNIVERSITY OF THE YEAR

Times Higher Education Awards 2020

TOP 250 YOUNG UNIVERSITY

Times Higher Education Young
University Rankings 2020

TOP 15 FOR SOCIAL INCLUSION

The Times and The Sunday Times
Good University Guide 2021

TOP 15 FOR TEACHING QUALITY

The Times and The Sunday Times
Good University Guide 2021

MIDLANDS UNIVERSITY OF THE YEAR

Midlands Business Awards 2020

WHAT DO OUR ACCOLADES MEAN?

Staffordshire University is an award-winning institution, and we are proud to share our accolades with current and prospective students. Our accolades are from various credible and respectable sources within the UK and internationally.

TEACHING EXCELLENCE FRAMEWORK

The Teaching Excellence Framework (TEF) is a system that assesses the quality of teaching in universities in England. It also includes some universities from Scotland and Wales. Universities are classified gold, silver or bronze. These ratings are determined by teaching, academic support and progression to employment.

TIMES HIGHER EDUCATION AWARDS 2020

The Times Higher Education Awards recognise the outstanding work across a wide range of university activities, including both academic and professional services. The specific category for University of the Year takes into account the exceptional performance of an institution in regard to research, teaching, access, leadership development and business performance.

TIMES HIGHER EDUCATION YOUNG UNIVERSITY RANKINGS

The Times Higher Education Young University Rankings 2020 includes almost 1,400 universities across 92 countries, that are 50 years old or younger, standing as the largest and most diverse university rankings ever to date. The rankings are based on performance across teaching, research, knowledge transfer and international outlook and are of huge importance across the globe.

THE TIMES AND THE SUNDAY TIMES GOOD UNIVERSITY GUIDE

As well as institutional rankings, The Sunday Times and The Times have identified the centres of excellence within each of 67 subject areas. The subject rankings are based on student opinion and their wider university experiences, combined with the outcomes of the 2014 research assessments, graduate job prospects and course entry standards.

MIDLAND BUSINESS AWARDS 2020

The Midlands Business Awards is a regional awarding body that celebrates the finest business talent the Midlands has to offer. From manufacturers and service providers to universities and young entrepreneurs, they recognise the best business minds over 13 different categories.



Discover what makes us an
award-winning institution



APPLICATION JOURNEY

When it comes to education, it's important to make the right choice for your future. At Staffordshire University, we want to provide you with the right information for you to make that choice – that's why we are planning to organise Open Days and visit a variety of UCAS events throughout 2021 and 2022.

IMPORTANT APPLICATION DATES

Whatever your circumstances, you can apply for Staffordshire University right up until September 2022. However, our accommodation and courses fill up fast so try your best to hit the recommended application date.

APPLICATION DATE

We encourage you to apply by this UCAS recommended date to ensure your application is considered early.

15 Jan 2022*

UCAS EXTRA OPENS

If you've used all choices on your application, and you're not holding any offers, you can still find a place using UCAS Extra.

Feb 2022

CLEARING OPENS

Clearing is your final chance to get an offer for a place on one of our courses but bear in mind, places are limited.

July 2022

RESULTS DAYS

Typically, you should get your results between July and August 2022 depending on what you're studying.

July – Aug 2022

*This third party deadline may be subject to change.

AFTER YOU'VE APPLIED

If you've submitted your application by UCAS's recommended application date of 15 January and been made an offer, you will start your post-application journey.

OFFER HOLDER DAYS

Get an exclusive tour around your future campus and find out more about your chosen course.

Jan – April 2022

APPLY FOR YOUR ACCOMMODATION

Once you've made Staffordshire University your firm choice, you are eligible to apply for your first-year accommodation.

Jan – Sep 2022

APPLYING FOR FINANCE

Get your finances sorted as soon as possible so you can concentrate on your exams – it's easier than it looks!

Mar – April 2022

ENROLMENT

Relax and settle into Staffordshire University life on our activity-packed Welcome Week. You've made it.

July – Sep 2022

5 WAYS TO JOIN US

Depending on your situation, there are five main routes that you can take to begin studying at Staffordshire University.

1

A LEVELS

If you have taken or are taking GCE A levels, the exact grades and subjects you need will depend on the course you want to study.

The qualifications you get will translate directly into UCAS tariff points, and you'll be able to check whether the qualifications you're predicted/ have are right for what you want to study.

You'll find the entry requirements for your chosen course on the course page of our website.

2

FOUNDATION LEVEL COURSES

A number of our degrees are available with a foundation year, helping bridge the gap between your school or college qualifications and your chosen degree.

Foundation courses tend to have lower entry requirements and are designed to prepare students for seamless transition onto a full degree course. Taking a foundation course, then progressing on to a full degree, will extend the total study period by one year.

3

ACCESS TO HE DIPLOMA

Most Further Education colleges in the UK offer Access to HE courses in a range of subjects at Level 3.

These special diplomas are specifically designed to take you into the subject you want to study. Many of our students come through an Access to HE path, so you'll find that we know exactly how to support you. Once you apply, we'll cross-reference the units you've studied at college to help you get a lot closer to the course and the career you want.

4

BTECS

Many of our students join us using BTEC qualifications, often at different levels:

- Level 4 BTEC – equivalent to A-Levels, this is a traditional route to a 3-year degree.
- Level 5 (HNC)/ Level 6 (HND) – advanced qualifications that allow us to map your progress to begin your studies in the second or third year of a degree.

5

STEP UP TO HE

Step Up to HE is a free 10-week course that will give you a taste of what it's like to study at university and allow you to study a range of subjects with us.

What's more, when you're ready to apply, we'll give you all the help you need with your UCAS application.

To find out more, or to apply for our Step Up to HE course, call: **01782 294400** or visit: www.staffs.ac.uk/stepup

Although these are the five main routes to study, we always welcome a wide range of qualifications and qualification combinations. We assess each application individually, taking into account any experience and skills you may have in your chosen field.



Find out more about becoming a Staffordshire University student





A JOURNEY OF CHANGE

ARE YOU READY TO SET OFF
ON A JOURNEY OF CHANGE?

CHANGE YOURSELF

Wherever you're studying, you are at a crucial point in your life. You are about to embark on a higher education journey like no other, and with our combination of on-campus and virtual learning, plus our digital development opportunities, you can turn a unique learning experience into a career in the industries of the future.

CHANGE THE WORLD

We look past the UK to the wider world we live in – and you will too. At Staffordshire University we combine work experience opportunities with connections that can take you anywhere, giving you the chance to make a difference to the wider community and the world.

CHANGE THE FUTURE

Whatever you want to study and whatever you want to be, with us you will look beyond today and focus on making a change to the future. Whether it be renewable energies, creating masterpieces, or scientific research, you have the might of Staffordshire University behind you every step of the way.

Break the boundaries of industry with Staffordshire University.
BE THE CHANGE



Immerse yourself in
our journey of change





Find out more about
our unique learning
experience



OUR UNIQUE LEARNING EXPERIENCE

Our unique learning experience will connect you to innovative and professional opportunities, transforming you into an employable graduate with a global vision, ready to change the world.



See our unique learning
experience in action



INNOVATIVE

Innovation is what we do. We adapt and grow with 21st century industries to give our students the best opportunities to corner new and future-proofed markets when they graduate.

Digital Development

At Staffordshire University, we can see the potential that developing more virtual experiences bring to our degrees. Adding virtual learning and digital development opportunities to our award-winning courses combines to create a learning experience like no other.

Unique teaching methods

We evolve our teaching and learning methods. We now offer modular learning on some courses, which gives students the chance to focus on one module at a time and build expertise on individual topics. Recently, we also introduced pathway courses to allow students to tailor their degrees to their career aspirations.



PROFESSIONAL

We give all our students the opportunity to graduate with a professional profile based on our values, competences and attitudes, and we continue to provide a chance to showcase and develop these attitudes.

Guaranteed Work Experience

Our work experience opportunities are essential to the professionalisation of past, present and future students. This year, we will continue to offer the opportunity of a work placement to every student and help to secure placements using our connections to big hitters in business around the world.

Careers Services

Our Careers Studio team help students to secure part-time work while studying, find placements during courses or help set them in the right direction to fulfil their career ambitions after graduation.



GLOBAL VISION

Our students discover the world without leaving the campus. We have students from all over the world, and our physical, as well as digital reach, is extending every day.

A worldwide institution

We are celebrated among the Top 250 Young Universities in the world (TEF WUR 2020). This is a testament to our international outlook, our teaching and learning and the diverse range of opportunities available to students locally, nationally and internationally.

Distance Learning

Our Distance Learning course portfolio is continuing to grow – giving working students the chance to connect, study and graduate from Staffordshire University from anywhere in the world.



CHANGE-MAKERS

Our attitude as a community makes us stand out from the crowd and gives us the opportunity to make a difference in the world. Plus, we make an impact with our research.

Research with impact

We are not just inspiring our students to make a change in the world, we're leading by example. We are continuing to make waves in microplastic research and much more, as well as running our research centres in archaeology and in psychological research.

Successful Alumni

Our Alumni are all over the world in ground-breaking industries, making positive and influential changes in business. Not only does this prove the success of our unique learning experience – it gives us a huge international and high-level network of brilliant and friendly connections.



Learn more and book
an Open Day to suit you



VISIT US

Staffordshire University could be your home in one of the most important stages of your life, and it's important to make sure that we are the right place for you. No matter where you live or what your commitments might be, we are giving you the chance to explore our campus, speak to our student and academic community, and experience a small sample of Staffordshire University life.

However you choose to visit us, you'll quickly discover the main difference between our campuses and those of other universities – our strong community spirit. We have solid links with our community and with local businesses. We're also big enough to give you an outstanding experience, yet small enough for you to see familiar faces every day.

There are two ways to experience our
Open Days:



WALK THE CAMPUS

Our on-campus Open Days are the traditional events that are hosted at each campus on numerous dates throughout the year. They're brilliant and friendly experiences, where you will be welcomed by our students and staff, and explore our campus with the help of our guides. You'll also get the chance to check out our subject talks, hosted by the academics themselves, where you will find out everything you need to know about what you could be learning in the next stage of your education. We also have accommodation tours with our students so you can check out your future homes and find out the best places to relax if you're staying on campus.

One of the best parts about visiting in-person is that you'll get the chance to explore our amazing campus locations. Stoke-on-Trent, Stafford and London all have great things to offer nearby our campuses, so be sure to ask around to find out about some of the best and closest places to unwind after your long day!

For more information on our on-campus Open Days, including dates and booking details, please visit: www.staffs.ac.uk/openday



EXPLORE DIGITALLY

As with many 21st century events, you can now experience a Staffordshire University Open Day virtually. Our Virtual Open Days are becoming increasingly popular for students far-and-wide, and deliver all the same great insights and information you'd expect to find at a traditional on-campus event.

With extensive campus tours available, subject and information talks for you to enjoy, and chances to chat to our staff and students, these events really are great ways to experience Staffordshire University for the first, second, or even third time. So, whether you want to explore your future home, you need more information about a course, or you have some burning questions about UCAS, finance and support – one of our Virtual Open Days could be for you.

Our Virtual Open Days offer exclusive content that you won't find on our website, or even in this prospectus, and a large portion of it is available on-demand after the event, so you can consume the information at your own pace.

For more information on our Virtual Open Days, including dates and booking details, please visit: www.staffs.ac.uk/visit



Get a taster of
what to expect at
an Open Day





Discover our wide range
of specialist facilities



OUR EVOLVING CITY CAMPUS

Providing you with the best tools for learning is one of our main goals – and you won't be disappointed. Our main campus in the vibrant city of Stoke-on-Trent not only contains all the world-class physical facilities you'd expect from an award-winning institution, it also has a digital presence that combines online resources with cloud-based learning and opportunities for digital development that you won't find anywhere else!

At our main campus, you'll find over £100m of professional-standard facilities to help you gain a competitive edge in your future career. Plus, through our close links with digital pioneers like Microsoft, we ensure that, whatever your subject, you are equipped with the skills and professional certification you'll need to stand out to employers in the future world of work.



THE SCIENCE CENTRE

Develop your scientific and analytical expertise in our £30m building dedicated to scientific innovation, packed with professional laboratories.



THE SMART ZONE

Explore your inner designer-maker with dedicated workshop space and the latest in digital technology and high-end engineering facilities.



CADMAN STUDIOS

Produce, broadcast and develop in our £11m development, that houses the latest audio and visual technology.



ESPORTS HUB

Build and manage tournaments with professional level hardware, software and broadcasting setups.



THE BEACON BUILDING

Study in our £5.5m teaching facility, or grab a bite to eat in the built-in bistro.



CRIME SCENE HOUSE

Hone your investigative techniques with a fully-equipped forensic simulation facility.



THE STUDENT HUB

Get year-round student support with over £1m of services dedicated to your development.



MOCK COURTROOMS

Put legal theory into practice in our purpose-built mock courtrooms.



Explore an extensive
collection of our facilities





Find out more about our commitment to providing the Education of the Future



CONNECTING YOU TO A DIGITAL FUTURE

Virtual learning and digital development are tried-and-tested methods that help enrich your experience in Higher Education. At Staffordshire University, we can see the potential that developing more virtual experiences bring to all our traditional, full-time degrees. It's all part of our totally fresh approach to teaching that puts you, the student, at the centre of your studies.

You will find all the professional-standard facilities you need to gain a competitive edge within our £100m+ campus, plus, our pioneering work with partners in the digital environment allows us to offer everything you need to thrive in your independent study too. We are the first university in Europe, for example, to migrate our digital services to the Cloud, enabling you to access and work on your documents from any device, at any time.

Whatever course you study, we strive to give you the best experience by combining the physical facilities on-campus, with connected digital learning to encourage group work, participation and knowledge transfer. Studying with us means working side-by-side with lecturers, rather than simply listening to them. We even connect our learning with the smart devices you use every day, giving you the opportunity to watch video presentations, lesson tasters and tutorials on your smartphone, tablet or laptop, well ahead of lectures.

By adding virtual learning and digital development opportunities to our full-time courses, we are offering you the ability to manage your own productivity and engage with work and study in both a virtual and physical environment, giving you the skills you need to transition seamlessly between the two in your future career. Our goal is to make teaching and learning more inspiring and rewarding.



Take a look at our virtual opportunities through our online window



Get Access To Digital Tools Including:

OFFICE 365

A cloud-based Microsoft Office suite.

SKILLSITE

A platform for students to gain external certifications to build a professional profile.

BLACKBOARD VLE

A virtual learning environment to provide resource and access course information.

BLACKBOARD COLLABORATE

A virtual classroom designed for online teaching, and video interaction with students and academics.

ONEDRIVE

Cloud-based storage to back-up your priceless course materials.

BEACON

The UK's first Higher Education digital assistant that uses artificial intelligence to guide you through your university experience.

MICROSOFT TEAMS

A workspace for real-time collaboration and communication, meetings, file and app sharing.



Find out more about
The Catalyst



A CATALYST FOR CHANGE

As a future student of Staffordshire University, you will be one of the first to experience our brand-new teaching, learning and networking facility: The Catalyst.

This new building will combine new technologies with dynamic learning spaces and will be used to launch the careers of the next generation of Staffordshire University students.

Apprentices and students are at the heart of The Catalyst. Networking and business collaboration are key to the building's objective, with drop-ins from industry employers, as well as an open plan social and focus zone that create a casual, yet professional atmosphere. Every day will offer the opportunity to make life-changing connections.

Take advantage of the constant innovation at Staffordshire University.

WE ARE YOUR CATALYST FOR CHANGE.



WHY 'CATALYST'?

The definition of a catalyst is 'an event, person or object that causes great change'. At Staffordshire University we believe that our institution, teaching, and academics can be the catalyst that changes your career path, and ultimately, your life.



Explore The
Catalyst





Find out more about our
global opportunities



Find out more about
Bethany's story



THE WORLD IS WAITING

As a Staffordshire University student, you have a chance to make the most of the world you live in. While you're here with us, there are countless opportunities to forge relationships with institutions and organisations, where you could get vital experience for your future career, expand your mind, and make a difference across the globe.

In the past, our students have travelled to many places across the world using our global professional

networks, from the cosmopolitan cities of Spain, to the bustling streets of Vietnam. It's a great way to enrich your studies, improve your employability, and it gives you a stepping stone to travel to parts of the world you may never have considered visiting before.

Whatever course you're studying, the world is your playground, and our dedicated Global Connections team will help you take advantage of these opportunities.

"MY EXPERIENCE WAS PROBABLY THE BEST TIME OF MY LIFE."



**BETHANY
WEBB**

ACTING AND SCREEN
PERFORMANCE

"My experience was probably the best time of my life. The way we were taught in Budapest was very different. I studied so many things that I didn't study here, so I looked at different topics in acting as well as stuff for theatre that we don't really tend to look at, because when you're abroad they have different methods of study – so, it's really interesting seeing different ways they do that. There were 13 of us in the Erasmus group and there were about 11 different countries, so we got to know each other really well."



Explore our
Centre for Health
Innovation online



OUR CENTRE FOR HEALTH INNOVATION

LIFE-CHANGING HEALTHCARE EDUCATION



Our Centre for Health Innovation is dedicated to training the healthcare professionals of the future, and is largely based in the heart of the historical county town of Stafford.

If a future as a nurse, paramedic, midwife or operating department practitioner (ODP) appeals to you, you don't need to look any further for your training than our Centre for Health Innovation.

In 2021, the centre benefited from an extensive multi-million-pound investment through the Stoke-on-Trent and Staffordshire Local Enterprise Partnership Getting Building Fund. This has provided brand-new training facilities for the health professionals of tomorrow.

We offer sector-leading clinical simulation and immersion suites that will enable you, as a student of healthcare, to explore and develop new patient safety techniques. Not only that, over recent years we've created new social spaces, a comprehensive healthcare library and facilities that mirror the real world through industry-focused learning.

These include our Clinical Simulation Suites and debriefing facilities, a simulated operating theatre and SimMan® mannequins – lifelike robots that can be programmed with a range of medical conditions – one of which even delivers a baby! There's also a fully equipped ambulance and skills labs for hands-on learning in a supportive and safe environment.





**"STAFFORDSHIRE
UNIVERSITY
HAS HELPED
WITH MY
CONFIDENCE TO
GET INVOLVED
IN EMERGENCY
SITUATIONS IN
THE HOSPITAL
SETTING"**

LIFE-CHANGING HEALTHCARE EDUCATION

REAL LIFE CLINICAL PLACEMENTS

Our highly skilled and supportive tutors have extensive experience of working in clinical practice, with many of them at the forefront of their profession. They're committed to academic excellence and understand how the healthcare professions require the highest standards of training. That's why around 50% of your time will be spent in real life placements – to help you put what you've learnt in the classroom into safe and supported practice.

We really do offer more in every way, including numerous initiatives that could make your fees go further, from high quality and varied placements and your DBS checks, to providing a uniform and a funded social schedule designed to fit around placements and studies. Throughout your time with us, you'll benefit from a personal tutor and, while on placement, you'll be supported by a placement colleague.

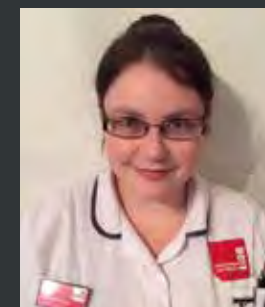
Study at our Centre for Health Innovation and you'll find the historic county town puts everything you need on your doorstep. If you and your course mates are out on the town, Casa, Couture and Revolution have all the right ingredients for a great party night. Or if you're in the mood for live music, just head down to The Grapes. For daytime retail therapy there's the Guildhall Shopping Centre, the Riverside Shopping area and the Waterfront Shopping Mall. While culture vultures have plenty of choice, including Stafford Gatehouse Theatre and a brand new six-screen Odeon Luxe cinema.

ACCOMMODATION

In Stafford, we're committed to making sure you have access to great housing advice. Through our relationships with private landlords, we can help you quickly find the perfect home from home. We also have a number of rooms available at Stafford Court, which is just a short walk from the Blackheath Lane Campus. Each room at Stafford Court is on a 49-week licence agreement, so you won't need to move out over breaks or holidays.



Discover your
future healthcare
experience



**CHARLOTTE
RIGG**

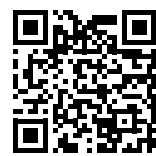
**NURSING
PRACTICE (ADULT)**

"I have found that taking part in the simulation days that have been arranged at Staffordshire University has helped with my confidence to get involved in emergency situations in the hospital setting. It's amazing how realistic the simulation dolls can be when they breathe, blink and talk which helps to make the experience more relatable to situations that students experience in practice. I feel that as a student and eventually as a newly qualified nurse I will be able to go into any situation and carry out an A to E assessment, and treat what is seen thanks to the practice that the simulation opportunities that have been provided."

#BeTheChange



Find out more about
Staffordshire University
London



OUR LONDON CAMPUS

STAFFORDSHIRE UNIVERSITY LONDON



Staffordshire University London has been making waves in the digital technology sector since 2018. Located in Queen Elizabeth Park in East London, the Digital Institute is committed to offering courses designed to corner the most lucrative and forward-thinking sectors in technology.

The expert academics at Staffordshire University London bring real-world experience to the institute who, combined with an advisory board and professional links with sector pioneers, ensure the courses are right at the forefront of industry demands, giving students the skills that make them hot commodities in the big city and beyond when they graduate.

The Digital Institute is right in the heart of the vibrant creative campus that is Here East, among café's, bars, Europe's largest shopping district, and some of the biggest names in the business, like Sports Interactive and BT Sport.

Big city living is just one of the great things that Staffordshire University London has to offer. The location is part of a wider experience made up of bespoke courses, world-class facilities and industry connections.



Watch videos
of our London
campus in action



The Digital Institute houses some of the best facilities that Staffordshire University offer, with a professional grade Esports Arena, a broadcasting control room, and dedicated networks and IT studios.





OUR STUDY AREAS

At Staffordshire University London, we offer a range of courses to prepare you for an exciting future in some of the fastest growing industries in the world.



Design • Create • Promote • Protect

ARTIFICIAL INTELLIGENCE
COMPUTER SCIENCE
COMPUTER GAMES DESIGN
CONCEPT ART FOR GAMES AND FILM
CYBER SECURITY
DATA SCIENCE AND INFORMATICS
ESPORTS
FINANCIAL TECHNOLOGIES

Staffordshire University London's portfolio is constantly evolving, check out the latest courses available at: dilondon.staffs.ac.uk/courses/

"I THINK STUDYING AT THE DIGITAL INSTITUTE WILL REALLY BENEFIT MY CAREER."



JAMIE WOOTON

ESPORTS

"When I found out about the facilities, I thought they were just second to none, they were just really a step above anything else that was on offer at any other university. I think studying at the Digital Institute will really benefit my career in the long run because I'm going to be developing so many skills as well as meeting so many different industry figures."



Watch Jamie's video





Find out more about
our accommodation



HOME SWEET HOME

One of the biggest changes in your life during your time at university is living away from home. This might seem daunting at first, but there are great memories to be made, great experiences to have, and great friends to be found.

Although our focus is on helping you to change the future, we are committed to remembering our roots. Our halls of residence are named after the famous potters and manufacturers that put Stoke-on-Trent on the map. Our on-campus accommodation is no more than a five-minute walk from our study buildings and at the heart of the University nightlife – and no matter what style of living you're after, we have something that will suit you...

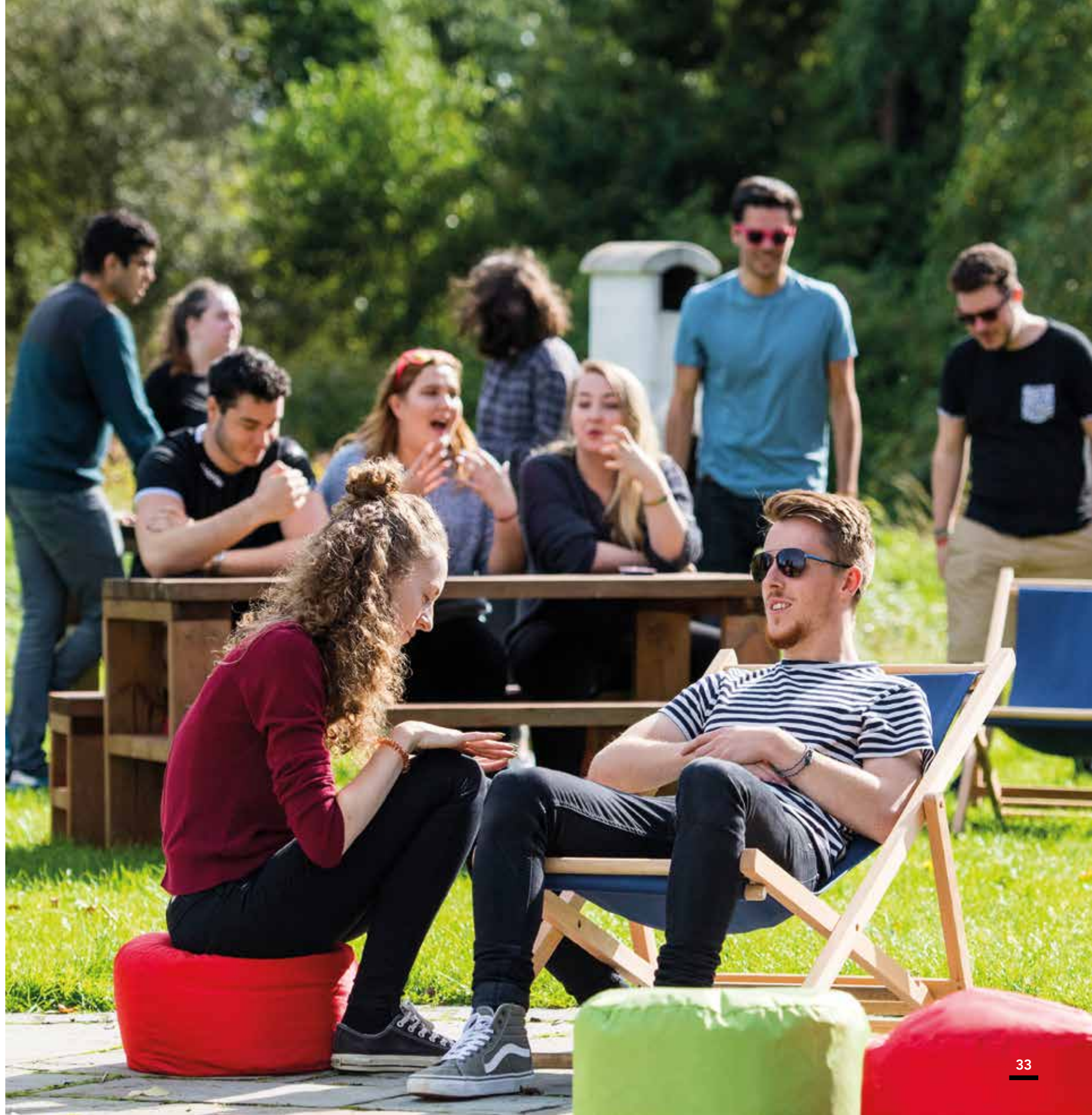
LIVE IN THE MIX

If you want to be in the centre of the university action, our **Leek Road Halls** offer a chance to study and socialise right on your doorstep. These rooms are contemporary, comfortable and community focused. With a large kitchen complete with modern appliances, a comfy social space and relaxing bedroom, these halls are perfect for social butterflies.

The majority of our accommodation opens out onto gardens, fields or courtyards. These great outdoor spaces are equipped with seating, outdoor ovens and charging points so you can keep up to date with the latest social feeds while you relax.



Explore your new
home at Staffordshire
University



HOME SWEET HOME



LIVE AMONGST NATURE

Around its own enclosed courtyard space, **Clarice Cliff Court** provides bedrooms with en-suite bathrooms and shared kitchen facilities. The buildings are located next to our nature reserve and set back from the main campus area, giving it the chilled-out country vibe that is unique to a city campus like Stoke-on-Trent.

LIVE IN A CLOSE-KNIT COMMUNITY

If you're looking for something more homely, **Leek Road Houses** are perfect for you. In our popular terrace house style houses, you'll have your own bedroom, a spacious open plan kitchen and living space to relax with your new housemates.

LIVE OFF CAMPUS

If on-campus accommodation isn't for you, don't worry. There are a number of private housing and student housing in the local area to take advantage of.

So you can live as close to, or as far away from the action as you want. It's a great way to get a head-start on budgeting for the future, and the living options are endless.

WE'RE WITH YOU

Going out in the world by yourself doesn't mean you have to be alone. We have a dedicated team to make sure you settle in and help you get started with university life.

We have a team of Residence Life Mentors who live in the accommodation and make sure that everyone is happy. They're all students, so they know what it's like to start a new adventure.

Residence Life Mentors are the people to go to for help finding the best supermarkets in the area, the best places for a good night out, or where to do your laundry, for example. They are available seven days a week – even if you just want a cuppa and a chat.

SAFE AND SECURE

Our Campus Security (an on-site support team) are available 24/7 and there's even a friendly campus police officer who can give advice on personal safety.

Once you've received a course offer, you can apply for a room in our accommodation. Find out more at: www.staffs.ac.uk/accommodation





Find out more about
our study modes



TEACHING WITH A DIFFERENCE

Full-time learning isn't the only way to complete a course with us. You can choose from several different study options – each designed to suit differing needs.

1 FULL-TIME

The most common way to study for an undergraduate degree is full-time. Ideal for school or college leavers who don't have other commitments, full-time study lets you immerse yourself in the subject, the culture, and campus life, too. Our full-time courses have various ways of studying and learning to tailor your degree to your career aspirations, from standard core and optional module based learning, to focused modular learning that allows you to study one topic at a time, and pathway courses that let you choose a specialist route part-way through your course.

For a full list of our undergraduate courses, visit:
www.staffs.ac.uk/undergraduate

2 PART-TIME

A lot of our courses can also be studied on a part-time basis, too. You'll still get the same level of support, and your studies may only take one year longer than the full-time option. Part-time study could be particularly attractive if you have work, family or other commitments during the week.

If you study part-time, the duration of your course depends on the speed you wish to progress through the syllabus. This is called the 'intensity of study'. For example, studying 'half-time' would be equivalent to 50% intensity of study and would typically double the length of your course from three to six years. You may be able to change the intensity of study during your course, but it may affect your funding, so talk to us before making a decision.

3 TWO-YEAR, ACCELERATED DEGREES

As a pioneer of the two-year degree, we know exactly how to make this work for our students. It's quicker (obviously) than a traditional degree, as you'll only be studying for two years. As a result, you could save a whole year's rent, food and transport costs.

It's important to know that it'll be an intensive degree programme, because you'll study for three semesters each year instead of two. By studying a two-year accelerated degree, you'll also be getting a head start by entering the job market a year earlier. Or you could progress to a Masters degree and still hit the job market ahead of others. Discover more about our two-year accelerated degrees at:
www.staffs.ac.uk/accelerated-degrees

4 FOUNDATION & PLACEMENT YEARS

Foundation year

These are one-year full-time courses to prepare you for degree level work in a specific area of academic study. On successful completion of the Foundation Year you will automatically progress onto the first year of the relevant degree.

Placement year

We offer a range of courses that encompass a Placement Year. Sometimes called a 'sandwich year', these courses include a period of work placement between your second and third year enabling you to gain work experience, apply your learning and enhance your employability.

5 INTEGRATED MASTERS

An integrated Masters degree (for example MEng, MSci) is a four year course (or five years with a placement year) that combines undergraduate and postgraduate study in a single course. The entry requirements will often be higher than for a three year undergraduate degree, but the savings make it worth the hard work.
www.staffs.ac.uk/undergraduate

6 DISTANCE LEARNING

Distance learning is a dynamic way of studying. Instead of attending lectures, you'll study and submit assignments online and attend virtual tutorials. Providing you have use of a computer with internet access, you can study from home, your workplace, or almost anywhere in the world, making it the most flexible learning pathway available. Our online distance learning students are supported by a dedicated team of tutors who are available online and by phone to guide and advise. Find out more at:
www.staffs.ac.uk/distancelearning

7 HIGHER AND DEGREE APPRENTICESHIPS

Higher and degree apprenticeships combine work with study to fast-track your career. We offer a range of higher and degree apprenticeships and work closely with organisations such as Vodafone and the NHS. Find out more about higher degree apprenticeships by visiting:
www.staffs.ac.uk/apprenticeships or check out our section on degree apprenticeships on pages 54-57.



Take some time to find the teaching that's
right for you





Find out more about
our Students' Union



THE STUDENTS' UNION

We know you'll love Staffordshire University as much as we do, and as soon as you join us, you'll be a member of a Students' Union that proudly represents the academic interests of our community. As well as providing advice and support services, we encourage you to create, connect and explore your passions while you're studying.

This is your Union, and you can help us make a difference.

REPRESENTING YOU

We are democratically led – with four students elected each year to become the Officer Team. Our officers are supported by a range of student representatives, who guide our fantastic support mechanisms and other work to ensure your university hears your voice when making big decisions.

All student representatives are elected, and taking part is a fantastic opportunity for you to gain skills whilst making a change.

GET INVOLVED

Whilst you're studying, there is so much to do and be a part of. There are over 100 student-led clubs and societies to choose from to feed your existing passions or to try something new!

You can also get involved in one-off activities locally and on-campus with our exciting Give it a Go and volunteering programmes.



Watch the
Students' Union
in action



THE STUDENTS' UNION

ADVICE, SUPPORT AND GAME CHANGERS

Our friendly advice team are here to support you. They're experts in academic advice, housing and money management and it's all free to you as a student. The advice team provide factual, confidential and impartial advice to empower students to shape their own experience. Our Officer Team also reach out to students with events, ideas and campaigns that we call 'Game Changers', to help make the university experience a safer and more enjoyable one for our students.

GREENPAD

GreenPad is the Union lettings service that puts students in safe accommodation with approved landlords. We work with lots of different landlords to provide a range of properties to suit all budgets and requirements, and our team are always on hand to support any aspect of an application.

WORKING WHILE YOU STUDY

From CV building to supplementing your student loans, gaining work experience and earning can always make a change while studying. Thankfully, there are lots of opportunities for you to earn while you learn, without taking time away from your studies.

BE PART OF YOUR STUDENTS' UNION STAFF TEAM

Play your part in making our community #ProudToBeStaffs by joining the team of friendly and enthusiastic Union Team Members who bring your Students' Union spaces, outlets and activities to life. With opportunities in retail, hospitality, administration and content production, there will no doubt be a role that could suit you.

Opportunities to apply and be interviewed arise regularly each year, so you could enjoy the benefits of study-compatible employment, alongside a team of fellow students, right here on campus in Stoke-on-Trent.

For more information about working for the Students' Union and to view opportunities, please visit:

www.staffsunion.com/jobs

STUDENT AMBASSADORS

Would you love to meet prospective students, visitors and guests and represent the student community? Our Student Ambassadors are paid to help at various recruitment events, including Open Days, giving you lots of ways to develop your social, organisational, time management and communication skills. Plus, becoming a student ambassador is a fantastic way to make new friends and build up personal and professional references.





Find out more about the
Staffordshire University
experience



THE PLACES TO BE

Whether it's 'knit and natter' in Squeezebox, boardgames in the boardroom, quizzes and karaoke at Ember Lounge, fresh dining at Verve, or club nights at the LRV – you won't be struggling for something to do during your spare time. What's more, all our services and venues have the Best Bar None Gold Accreditation.

OUR VENUES



THE EMBER LOUNGE

If you're looking for a chill-out during your studies, then Ember Lounge is the place to be! You can relax with friends, check out live sport and sample fantastic foods. To add to all of that, it's also home to our sell-out karaoke nights!



LRV

Our weekly club nights cater for all students, and in recent years, have hosted Professor Green, Scouting for Girls, Dougie Poynter and Kristian Nairn (Hodor). We also proudly work with our student groups on Rock Nights, house music events, Poker Nights and even transform the space during the day for dance practice, vintage fairs and family-friendly days.



VERVE

With fresh dining, and a whole range of events, Verve is our all-day venue that hosts loads of live music, society events and daily food deals to keep you fuelled up for whatever the day holds.



SQUEEZEBOX

If coffee is your game, then SqueezeBox is your campus caffeine stop. With a relaxed atmosphere, you can sit in with friends, or grab a coffee, smoothie or anything from our vegan friendly menu to go.



Explore our
venues and what
they have to offer





Find out more about
our Student Services



STUDENT SUPPORT NETWORKS

Our fantastic community means you're constantly connected to a great support network. Our staff and services care. Whether it's a concern about money, a query about your studies or a personal issue – we are here to support you. Our friendly Student Support and Wellbeing Team based in our Student Hub are always available to offer their time and support.

THE STUDENT HUB

It's important to us that our students can get access to information, care and support which meet their needs. Our Student Hub is the place to go at our Stoke-on-Trent campus for any students that need advice and support, have a query, or are looking for careers support.

CARE LEAVERS AND ESTRANGED STUDENTS

Our dedicated staff are always available for students who are care experienced or estranged from their families. The team are in place to support students as they transition into and through their studies at Staffordshire University. They will provide a personalised service which includes year round accommodation, targeted financial support, and personalised support from our student support workers. You can find out more at:

www.staffs.ac.uk/care-leavers

STUDENT SUPPORT AND WELLBEING

It's important to us that as a student, you have access to support when you need it the most, whether that be face-to-face or online. Our friendly team of Student Inclusion Advisors are available for you to talk confidentially to about any issues or problems you may experience whilst studying.

YOUR PERSONAL WELFARE

Another great facility we offer is an on-site NHS healthcare centre, with doctors available during the week. Once you're registered, you'll have full access to a local GP service – something that isn't available at a lot of other universities. All this extra help means you can be as independent and community minded as you want – and really make the most of your time here.

CHAPLAINCY AND SPIRITUAL WELLBEING

Faith is an important part of many lives; our Multifaith Chaplaincy team are in place to support students from all faiths and none – they can provide valuable support in times of need, but also deliver events and activities that contribute to the life of our University. They also make a brilliant cup of tea!

BEACON

Beacon is your new friend in your pocket and is the first digital coach in any UK university. You can use Beacon to get your timetable, lecturer information, ask questions, get a new student card or bank letter, find a member of staff, or find activities on campus.

SUPPORT AT THE STUDENTS' UNION

Our excellent Students' Union is also available for all kinds of support, from job opportunities on campus to a 'Money Doctor' advice service.



DAY CARE NURSERY

Worried about childcare arrangements while you study? Don't be, we've got that covered with our well established Day Care Nursery facility at the Stoke-on-Trent campus. Our Day Care is for all children aged 0-5 years, is open five days a week, and combines well-experienced professionals with great opportunities for child development in-line with the Early Years Curriculum, and the convenience of being a 5-minute walk from campus!

What's more, as of January 2022, we are welcoming a brand-new Nursery and Forest School in the heart of our Stoke-on-Trent campus. Our Nursery and Forest School is brings the forest setting to our city campus and is not only connected with its landscaped and idyllic surroundings, it provides inspirational and flexible learning spaces that offer developing children digital experiences too. We understand just how critical it is that childcare evolves ahead of the times, so our team are committed to helping to build prerequisite skills to support future learning, as well as providing a fun and loving environment to nurture the little professionals of tomorrow!

Find out more about our Nursery and the prices for future students at:

staffs.ac.uk/about/facilities/nursery



Learn how we
can support you





Find out more about
our careers support



YOUR FUTURE CAREER

Preparing you to make a change in the careers of tomorrow is at the heart of everything we do. We stay in constant communication with our extensive professional network, and encourage all students to gain invaluable work experience to both in the UK and internationally. Key skills are carefully built into all our courses, ensuring you're ready to stand out by the time you graduate.

With a little help from us, you could become a global visionary that thrives on professionalism, innovation, and change-making – just what 21st century industry craves.

CAREER AND PERSONAL DEVELOPMENT

Our careers team and peer to peer coaches are bursting with knowledge, passion and expertise. Our team are always on hand and can give you access to:

- One-to-one career coaching.
- Coaching on interview techniques, CV writing and job applications.
- Tools and opportunities for students to develop the ability to recognise and articulate the skills they have developed throughout university.
- Unitemps – our in-house recruitment agency, providing a range of paid work on campus and with local employers.
- Annual Careers and Enterprise events that bring our students into contact with hundreds of employers.
- Careers support for life!

WORK EXPERIENCE

In the current jobs market, you need more than qualifications alone. That's why we arm you with experience alongside your degree, so you can secure the right future career.

Like jobs, one size doesn't fit all. Your work experience maybe part of your course's connections, obtained through your school or the Career and Personal Development Team. Or it might be something you organise yourself. No matter how you find it, we'll help ensure it gives you the real hands-on learning your career needs.

GAINING EXPERIENCE

There are so many different ways to gain experience before, during and after your studies. We strongly encourage you to plan your experiences well, try lots of new activities and keep reflecting on what you have gained from every opportunity.

Rest assured, support is on hand to help you select and secure these experiences as it's so crucial to keep building networks, understanding your strengths and planning for what is sure to be an exciting future.

MY CAREER

Your Career and Personal Development one-stop-shop is the first place to go to look for jobs and experiences and book on to a careers event: www.staffs.ac.uk/mycareer

STAFFS MENTORING

The brand-new Staffs Peer Mentoring Scheme has been designed to help first year students build connections and confidence. We have hundreds of students on hand to mentor new starters and ensure they settle into university life. No problem is too big or too small. You might want to ask questions such as:

- My laptop is broken, where can I get it fixed?
- I'm a little homesick – how did you overcome it?
- I want to meet new people, what is the best way to get involved in university life?
- I like to keep fit and play sport, can you tell me more?
- I am looking for a part time job, how can I begin to look for one?



Discover how our students have made
the most of the career opportunities
while studying





Learn more about our
Staffordshire University
sporting community



CHALLENGE YOUR BODY



Take a look around our
state-of-the-art sports
facilities



Sport and physical activity play a large part in the university experience. From meeting friends, to keeping fit and taking on local university rivals in our annual Varsity event, there's no better way of getting into campus life than diving headfirst into sport at Staffordshire University.

Whether you're a total novice looking for some recreational sport, or a rising star set for centre stage in the first team, there's something for you to get stuck into. From football, netball, basketball and lacrosse, to more fun and friendly activities like Ultimate Frisbee® and glow-in-the-dark badminton.

OUR SPORTS FACILITIES INCLUDE:

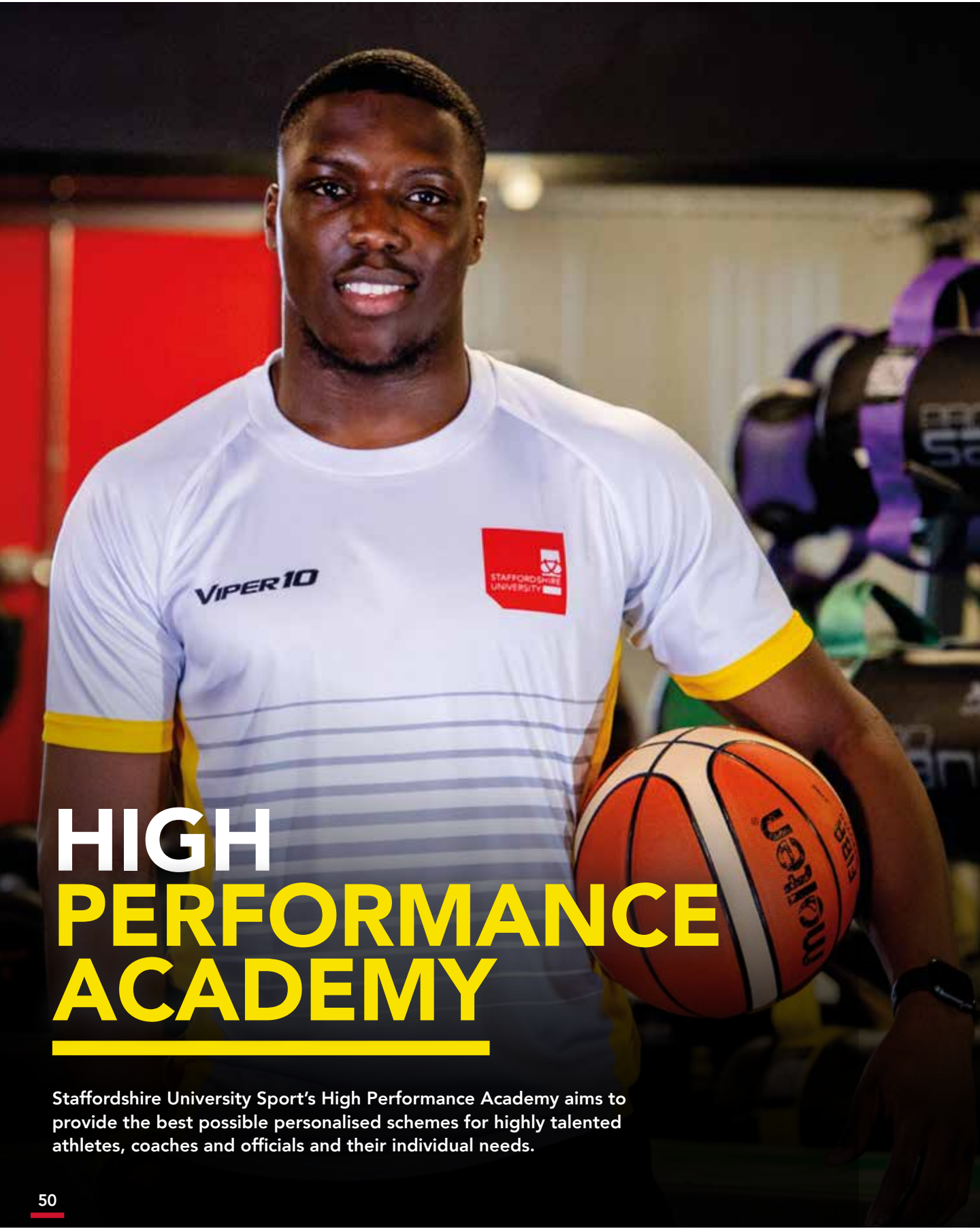
- Grass pitches for football, lacrosse, American football, ultimate frisbee and rugby
- Sports hall for badminton, volleyball, futsal and basketball
- Two floodlit Astroturf pitches
- State-of-the-art 3G surfaces

OUR GYM

We have a newly equipped sports hall, new functional training rooms and an 80-station gym with cardio equipment, resistance equipment and free weights.

If you choose to live in University accommodation then access to the gym is free of charge, if not then membership starts at just £15 a month.





HIGH PERFORMANCE ACADEMY

Staffordshire University Sport's High Performance Academy aims to provide the best possible personalised schemes for highly talented athletes, coaches and officials and their individual needs.



Our main objective is to help enrich, develop and improve the student experience whilst studying at the University. Within the High Performance Academy, high performing sporting students can apply to any of the three year long tailor-made scholarship or development schemes, depending on their requirements whilst studying here at the University.

We offer three schemes: The Performance Athlete Scholarship Scheme (PASS), the Talented Athlete Development Scheme (TADS), and the Coaching and Officiating Development Scheme (CODS).

All schemes consist of the same basic support package which includes:

- Strength and conditioning
- Nutrition advice
- Sports psychology
- Sports therapy sessions
- Academic flexibility
- HPA kit bundle
- Dual career mentoring
- Free gym and facility access
- Free BUCS membership

PERFORMANCE ATHLETE SCHOLARSHIP SCHEME

Applying to be part of PASS requires applicants to have competed at either a regional, national or international stage within the past 2 years (evidence will be required on submission). Once accepted onto the scholarship, PASS athletes will have access to the following additional benefits:

- Bursaries (up to £3,000 depending on level of competition)*
- 1 to 1 strength and conditioning coached sessions
- 1 to 1 sports psychology sessions
- Higher levels of academic flexibility
- St Georges Park athlete testing/ experience days
- Dual career TASS qualified mentoring

*To receive this funding students must be on a full-time undergraduate course.



Meet our range
of researchers



RESEARCHING A BETTER TOMORROW

As well as being at the centre of the UK, we're also at the heart of some of the most outstanding applied research in Britain. Our professors conduct research all over the world, as well as right here at Staffordshire University.

We have dedicated research centres for archaeology, psychological research, clinical biomechanics and rehabilitation technologies, and health and development, and we're looking to add more in the future. Just to give you an idea of the quality of our research, 78% was rated as 'world leading' or 'of international importance' in the Research Excellence Framework 2014. We lead by example in our research, and we encourage and facilitate our students with excellent facilities and experienced academics to ensure, as an institution, we make a positive impact on future generations.



PROFESSOR CAROLINE STURDY COLLS

Professor of Conflict
Archaeology and Genocide
Investigation

Caroline is Staffordshire University's Professor of Conflict Archaeology and Genocide Investigation, director of the Centre of Archaeology and author of the globally renowned book *Holocaust Archaeologies: Approaches and Future Directions*.

Her research focuses on holocaust and forensic archaeology, and she is one of the leading names in her field, receiving international media attention through television documentaries and radio programmes in both Europe and the US. Caroline doesn't conduct all her research behind a desk, she is an accomplished field researcher, being the first to complete archaeological surveys at strategic extermination camps and killing sites in Europe, including Treblinka, Poland and Anhatlager, Serbia. Not only this, she is a practicing forensic archaeologist, undertaking consultancy for UK Police forces with regards the search and recovery of buried remains.

Caroline is at the top of her field, both publishing an extensive collection of papers and books and holding regular conference talks and lectures about her research.



PROFESSOR CHRISTOPHER GIDLOW

Professor of Applied
Health Research

Chris has been an applied health researcher at Staffordshire University since completing his PhD in 2006. During this time, he has led applied health research in a range of areas, becoming internationally recognised in two: natural environments and health, and health and physical activity promotion through primary care.

Chris has secured funding for, and led, research and evaluation projects totalling almost £1.8 million. This includes funding from prestigious sources, such as the National Institute for Health Research and the European Seventh Framework Programme, and has allowed him to develop an international network of colleagues and collaborators, and to publish widely in the process. Now, as the Academic Director for the Centre for Health and Development (CHAD), Chris will continue to build this research portfolio, extensive PhD supervision and curriculum development around health.



PROFESSOR KAREN RODHAM

Professor of Health
Psychology

Karen has built on her background as a practicing health psychologist at the Royal National Hospital for Rheumatic Diseases, and is now the Co-Director of the Professional Doctorate in Health Psychology and directs the Staffordshire Centre for Psychological Research (SCPR) at Staffordshire University.

Her research expertise lies in conducting qualitative research that develops our understanding of how people cope with difficult health-related situations. Interviews, discussions and observations help her learn what helps or hinders people's ability to cope, and it's this type of research that has contributed to the real success of the SCPR.

Thanks to work conducted at the SCPR we are gaining a deeper understanding of how best to help people cope with long term conditions. Karen's work in particular has focused on how to support people living with persistent pain.



Check out the latest
research developments here
at Staffordshire University





Discover more about
our Higher and Degree
Apprenticeships



HIGHER AND DEGREE APPRENTICESHIPS

If you're interested in combining practical, on-the-job training with studying for a university qualification, a degree or higher apprenticeship could be the answer.

Higher and degree apprenticeships are fast becoming recognised as an exciting way to gain university level skills while earning a salary. They provide the opportunity to start a new career, supported by university learning – or gain new qualifications to help you progress in your current career.

A higher apprenticeship typically takes two years to complete, while a degree apprenticeship normally takes three to four years. You can combine full-time employment with part-time study at university with your fees paid for.

VALUABLE CONNECTIONS

Take either a higher or degree apprenticeship with us and you'll divide your time between the workplace and university. All apprentices must be in suitable paid employment. Because you'll be spending valuable time in work, learning practical skills, you'll also be able to make valuable connections with people in your chosen industry or profession.

NO TUITION FEES

Higher and degree apprenticeships are funded by a government agency. As there's no tuition cost for you, your university learning experience will be debt-free.

WHO ARE APPRENTICESHIPS FOR?

Higher and degree apprenticeships are suitable for college leavers and existing employees looking to progress in their chosen career. Opportunities span all sorts of different occupations in many sectors, such as business, engineering, health, digital and more. And because each apprenticeship is designed in association with an employer, you can be safe in the knowledge that you're gaining career-boosting practical skills alongside the academic knowledge demanded by your chosen industry or sector.

WHY STAFFORDSHIRE UNIVERSITY?

This is an exciting time for higher and degree apprenticeships at Staffordshire University. We work with some of the country's largest employers and we're continually working to introduce an even wider choice of apprenticeships. So, whether you're keen to enter the workplace quickly and earn a salary, or you want to progress further with your current employer, there's every chance we've an apprenticeship that's perfect for you.



Dig into our higher and
degree apprenticeships
opportunities



HIGHER AND DEGREE APPRENTICESHIPS



"The best thing about being an apprentice is the introduction into the career and hands on experience that you are getting, while getting your degree. I would 100% recommend getting into apprenticeships from an early age. I believe if you want a good solid career with an education, this is the way to go."

CRAIG LAWRENCE

ENGINEERING APPRENTICE,
ARCONIC

WHICH LEVEL IS FOR ME?

Whether you study for a higher apprenticeship or a degree apprenticeship will depend on the apprenticeship you're interested in. If you're already employed, it will be determined by the needs of your employer.

Higher apprenticeship – you'll study at Levels 4 or 5 equivalent to a foundation degree and above.

Degree apprenticeship – you'll study for a full Bachelors degree (Level 6) or a full Masters degree (Level 7).

WHAT ARE THE ENTRY REQUIREMENTS?

To be eligible for a higher or degree apprenticeship, all apprentices are required by the Education and Skills Funding Agency (ESFA) to have achieved, and be able to provide evidence, of the following before being accepted onto an apprenticeship programme:

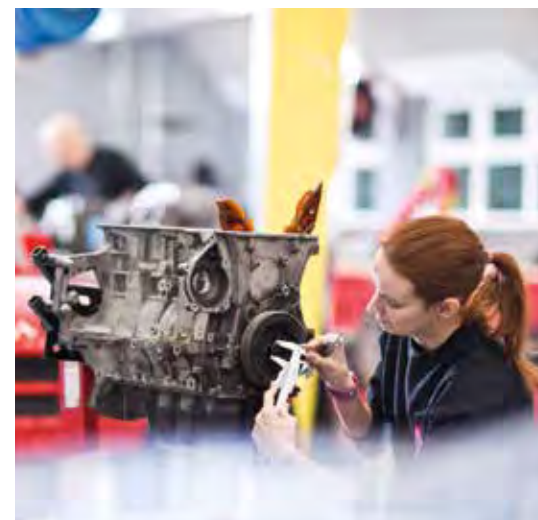
- Evidence of English GCSE (grade A-C or 9-4) or equivalent qualification eg. Level 2 functional skills.
- Evidence of Maths GCSE (grade A-C or 9-4) or equivalent qualification e.g. Level 2 functional skills.

Higher and degree apprenticeships will require a level 3 qualification, subject to school and level of standard. But don't worry if you don't meet these criteria our University is committed to diversity and inclusion and will consider applications from those with relevant experience on an individual basis.

Typical entry requirements:

- 5 GCSEs – grade C or above equivalent in Maths and English.
- 64-112 UCAS points from relevant level 3 qualifications, e.g. A levels/BTEC. Evidence of significant relevant previous learning or experience may be considered on an individual basis.
- Must have a contract of employment to cover you for the duration of the apprenticeship for a minimum of 30 hours a week.

To find an organisation that is offering the kind of apprenticeship you're looking for, visit the government's apprenticeship website:
www.gov.uk/apply-apprenticeship



OUR APPRENTICESHIPS

BUSINESS AND ADMINISTRATION:

Chartered Manager Degree Apprenticeship
Digital Marketer Degree Apprenticeship
HR Consultant/Partner Apprenticeship
Operations/Departmental Manager Apprenticeship
Senior Leader Masters Degree Apprenticeship

CARE SERVICES:

Social Worker Degree Apprenticeship

DIGITAL:

Digital and Technology Solutions Degree Apprenticeship
Software Developer Apprenticeship
Network Engineer Apprenticeship

HEALTH AND SCIENCE:

Advanced Forensic Practitioner (Custody or Sexual Offence)
Healthcare Assistant Practitioner Higher Apprenticeship
Healthcare Science Practitioner Degree Apprenticeship
Nursing Associate/ FdSc Nursing Associate
Operating Department Practice Degree Apprenticeship
Registered Nurse/ BSc (Hons) Nursing Practice

MANUFACTURING AND ENGINEERING:

Embedded Electronic Systems Design and Development
Engineer Degree Apprenticeship
Manufacturing Engineer Degree Apprenticeship

PROTECTIVE SERVICES:

Police Constable Degree Apprenticeship

COMING SOON:

Accountancy/Taxation Professional*
Cyber Security Technical Professional*
Paramedic*
Advanced Clinical Practitioner*
Psychological Wellbeing Practitioner*
Children, Young People and Families Manager*

*Subject to validation

Courses listed as 'subject to validation' are in the final process of approval. Full validation is not guaranteed, and should the course be significantly amended or deemed unfit, you will be contacted by the University. For more information visit:
www.staffs.ac.uk/validation



Find out all about fees
and funding



FEES AND FINANCE

UNIVERSITY FEES MIGHT SOUND DAUNTING AT FIRST,
BUT REMEMBER... YOU AREN'T JUST INVESTING IN
US, YOU'RE INVESTING IN YOUR FUTURE CAREER.

Everybody has the right to a fantastic university experience, no matter what your financial status may be – so be sure to check the following support section for more information on what financial help is available, and exactly where to go to find out more.



Check out our helpful
videos on fees and finance



TUITION FEES 2022/2023

HOME STUDENTS

Current fees for 2022/23 are listed as below.

The annual fee for undergraduate students studying full-time is £9,250 for 2022/23. This is a regulated fee; the Government determines the maximum fee a university may charge. The University expects to apply any permitted increase, so subsequent years' fees may increase, but will do so by no more than the rate of inflation as measured by the RPIX index.

Any permitted increases in fees will be published on the University's website so for the most up-to-date fees information please refer to our website.

2022/23 FEES:

- All full-time undergraduate degrees – £9,250.00
- Two-year accelerated degrees – £11,100.00*
- We also offer a pro-rata fee structure for part-time study.

INTERNATIONAL STUDENTS

- All full-time undergraduate degrees – £14,500*
- All full-time undergraduate health degrees (inclusive of Practice Placement Fee) – £19,000*

For more information about fees visit:
www.staffs.ac.uk/international-fees

Please note: Accommodation and living costs are not included in our tuition fees. For further details on what's included in your tuition fees please visit the individual course pages on our website.

ABOUT OUR FEES

New and continuing students will be charged the maximum permitted fee, determined by the Government and measured on how we perform against the Teaching Excellence Framework. Fees for our part-time undergraduate courses are usually a proportion of the full-time fee depending on the number of modules studied (commonly referred to as 'course intensity').

Placement year fees will be charged at no more than 20% of the normal tuition fee. For further information please visit:

www.staffs.ac.uk/undergraduate/fees

ADDITIONAL COURSE COSTS

If there are additional costs associated with any course they will be listed on the relevant course pages on our website. Additional costs typically include items such as:

- Equipment hire
- Art materials
- Optional field trips
- Printing
- Books you wish to purchase.



FINANCIAL SUPPORT

LOANS FOR TUITION FEES

Eligible UK students are entitled to apply for a tuition fee loan to cover the full cost of tuition fees. These are paid direct to the University and you don't have to pay anything back until you have graduated and are earning over £26,575 per annum*.

LOANS FOR LIVING COSTS (UK STUDENTS ONLY)

Eligible UK students can also take out a maintenance loan to help pay for things like accommodation, food, transport and books. The maximum amount you can borrow depends on your household income as well as where you are studying and living. This will be paid into your nominated bank account at the start of each term,

once confirmation of your registration has been sent to Student Finance. Find out more at:
www.gov.uk/student-finance

SOURCES OF ADDITIONAL FINANCIAL SUPPORT

If you receive funding from Student Finance you may be eligible to apply for additional support. Details of the financial support available and how to apply for it can be obtained by visiting:
www.gov.uk

Extra funding is available for students with dependents as well as for those who have disabilities. Full details, including a student finance calculator, can be found at:
www.gov.uk/student-finance

*Correct at time of going to print (March 2021). Refer to page 63 for further information.



Learn more about UCAS
points and our entry
requirements



UCAS POINTS AND WHAT THEY MEAN

There are numerous different ways to study at Staffordshire University. But with so many qualifications available, it's important to have one scale to measure everything. That's where UCAS points come in.

The UCAS tariff converts the grades you achieve into points. That way, a wide range of qualifications can be compared and considered during the application process. For some courses, specific subjects and grades may also be required.

Our full entry requirements can be found at:
www.staffs.ac.uk/courses/undergraduate/entry-requirements

The tables opposite will help you see how your grades convert into UCAS points, so you can start working out exactly what you need.

For help with converting your qualifications into UCAS points, visit: www.ucas.com/ucas/tariff-calculator

UCAS POINTS CALCULATOR

The information below is designed to help you calculate the number of UCAS points awarded to the different qualifications you may have studied.

Points are not included for all qualifications but further information is available on page 62 of our prospectus.

A level and AVCE

A*	56
A	48
B	40
C	32
D	24
E	16

AS Level and AS VCE

A	20
B	16
C	12
D	10
E	6

BTEC National Extended Diploma/BTEC Level 3 National Extended Diploma

D*D*D*	168
D*D*D	160
D*DD	152
DDD	144
DDM	128
DMM	112
MMM	96
MMP	80
MPP	64
PPP	48

For further information about our courses please contact our Enquiries Team on 01782 294400.

ENTRY REQUIREMENTS

WE'RE COMMITTED TO CONNECTING STUDENTS OF ALL AGES, SKILLS AND EXPERIENCES WITH HIGHER EDUCATION AND ARE A LEADING VOICE IN ALTERNATIVE ROUTES INTO UNIVERSITY.

So, if you think you've done things a little differently and aren't sure if you're eligible to study, get in touch and see. We assess each application individually, taking into account any experience and skills you may have in your chosen field.

Don't worry if you can't see your qualification listed. Just contact our team of experts on **01782 294400** or email us at enquiries@staffs.ac.uk

OUR OFFERS

We use the UCAS points tariff in our offer-making and don't discriminate between pre-2015 old style A and AS levels and the ones reformed after 2015. We also don't discriminate between the pre-2016 old specification BTECs (QCF) and the ones reformed for first delivery from 2016 (RQF). In most cases, you will probably need at least the minimum number of points or grades required for your chosen course. Typically, this would mean one of the following scenarios:

- Two/three GCE A level or AVCE subjects
- One GCE A level Double Award or AVCE Double award
- A combination of one GCE A level and an Advanced Welsh Baccalaureate - Skills Challenge Certificate
- BTEC National (QCF) Extended Diploma
- BTEC National Diploma/BTEC Subsidiary Diploma combined with other level 3 qualification to achieve tariff points
- Access to HE Diploma
- Three SQA Highers and Two Advanced Highers
- Irish Leaving Certificate Higher grades
- An Irish FETAC or QQI award
- An award of the European Baccalaureate Diploma with at least 70% overall
- An award of the International Baccalaureate Diploma achieved by passing each of the required components and achieving a total IB point score of 28-32 or required tariff points from individual components of the IB

- A pass in an Advanced Apprenticeship
- Achievement of an OCR National Diploma or Extended Diploma
- A successfully completed NVQ at level 3 or above
- A pass in a university-validated foundation course
- A pass in a university foundation year

GCSE REQUIREMENTS

English and Maths at Grade C/Score 4 (or Level 2 equivalents) are required as a minimum for all our courses. Some courses also require other subject specific GCSE requirements. These will be stipulated on our course pages on our website.

INTERNATIONAL APPLICANTS

We accept a wide range of qualifications from around the world. For more information visit:

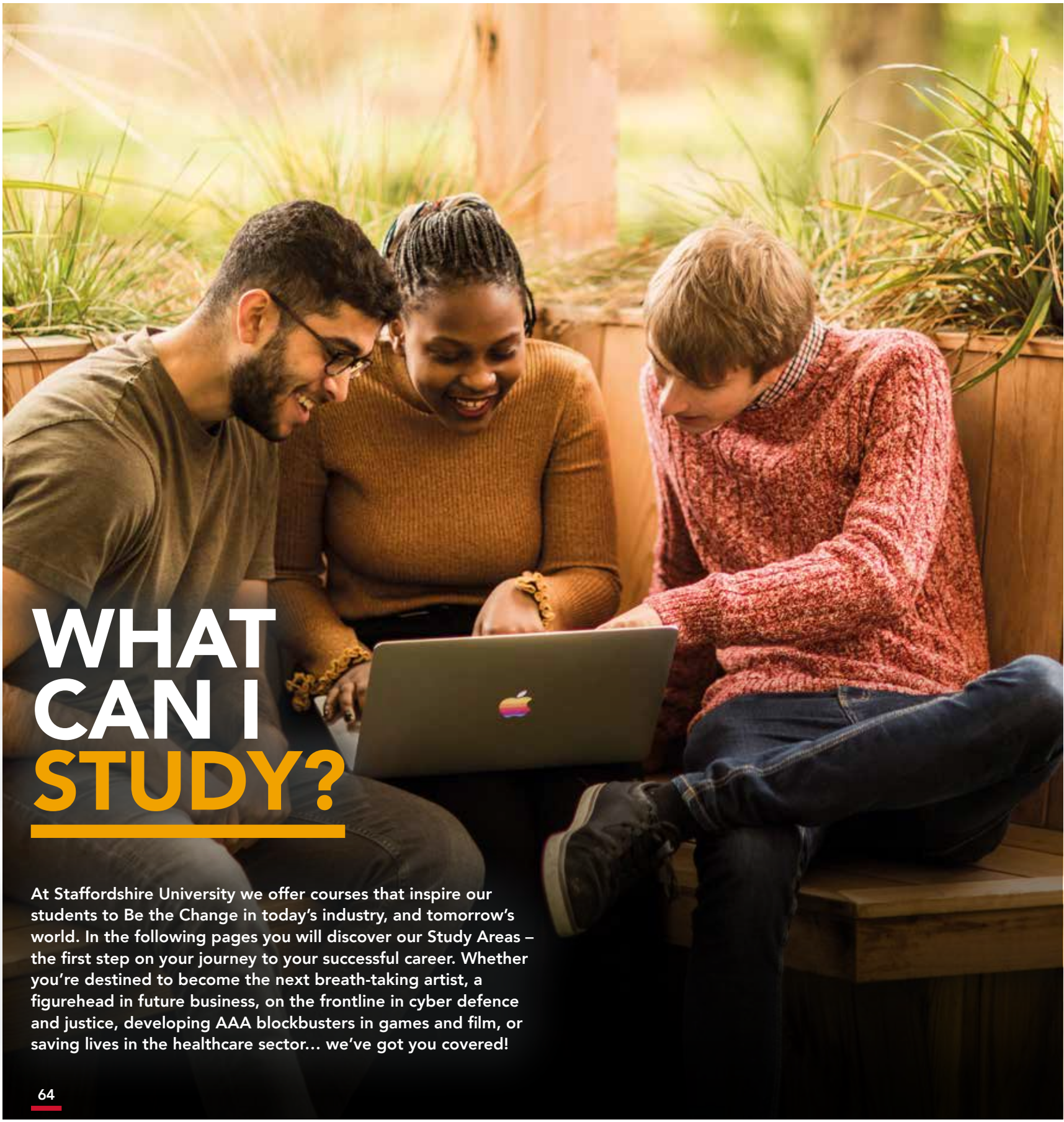
www.staffs.ac.uk/english-language-requirements

ENGLISH LANGUAGE REQUIREMENTS

Most of our courses require a minimum IELTS score of 6.0 overall with 5.5 in each component or an equivalent approved qualification. However, some courses have higher entry criteria due to accreditation requirements or the need to have exceptional communication skills as part of the course.

The Staffordshire University Pre-Sessional Programmes are designed for students who intend to study undergraduate or postgraduate courses at Staffordshire University, but do not meet the language requirements for direct entry. For more information on all of our Pre-Sessional English programmes, and the next steps to take if English is not your first language, please visit: www.staffs.ac.uk/english-language-courses





WHAT CAN I STUDY?

At Staffordshire University we offer courses that inspire our students to Be the Change in today's industry, and tomorrow's world. In the following pages you will discover our Study Areas – the first step on your journey to your successful career. Whether you're destined to become the next breath-taking artist, a figurehead in future business, on the frontline in cyber defence and justice, developing AAA blockbusters in games and film, or saving lives in the healthcare sector... we've got you covered!

Our Study Areas are split up into sections of related disciplines that should perk your interest and ambitions, and contain all of the reasons you need to take your next steps into the future with us, as well as snapshots of our great facilities, and career information you might find useful. They also contain unique QR code links that will take you to areas of our ever-evolving website, so you can be sure that you are getting the most up-to-date information from academics and students that are living the Staffordshire University experience right now.

Found something you're interested in? Check out our course pages online and get access to up-to-date information and apply links at: staffs.ac.uk/courses

Study Area	Page
ART AND DESIGN	66 - 71
BUSINESS, FINANCE AND LEISURE	72 - 77
COMPUTING	78 - 83
CRIMINAL JUSTICE AND INTERNATIONAL RELATIONS	84 - 89
EDUCATION AND TEACHING	91 - 95
ENGINEERING	96 - 101
GAMES	102 - 107
HEALTH AND WELLBEING	108 - 113
LAW	114 - 119
MEDIA, PERFORMANCE AND COMMUNICATION	120 - 125
SCIENCES	126 - 131
SOCIETY, PLACE AND PEOPLE	132 - 137
SPORT AND EXERCISE	138 - 143



View our
courses online



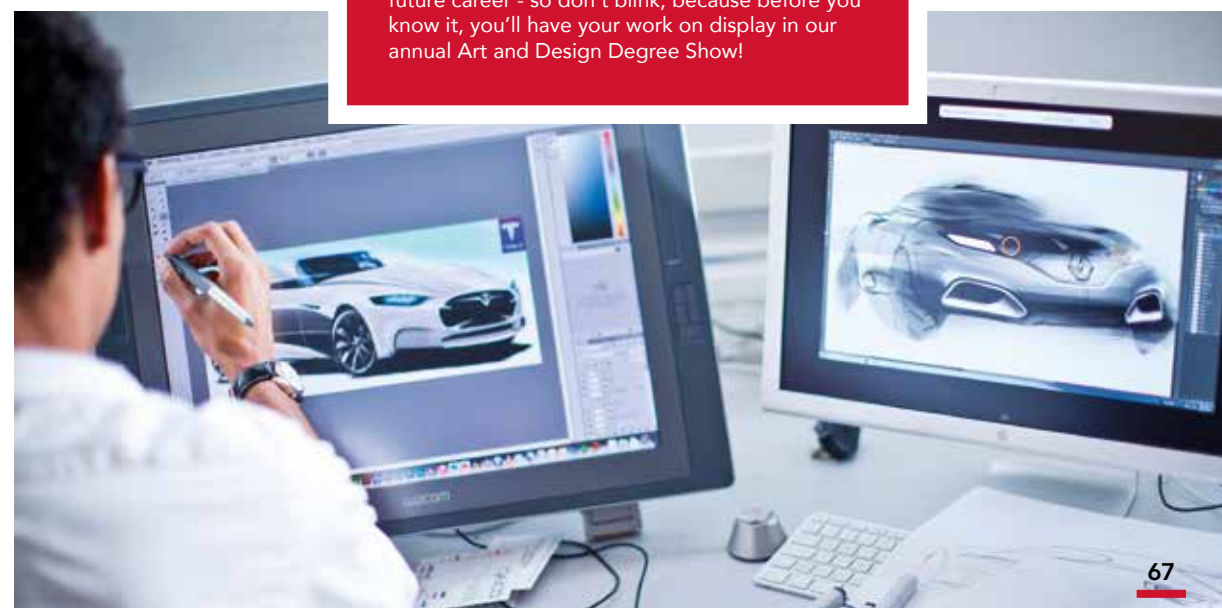
ART AND DESIGN



ART AND DESIGN

We're one of the country's leading providers of Art and Design courses – ranking in the top 25% in the country for Design and Crafts and fifth for Fashion and Textiles in the 2021 Guardian League Tables.

Join the experts at Staffordshire University and explore courses that range from architecture, photography and animation, to surface pattern and industrial design, each with their own facilities and unique pathways to industry. All our courses are taught by expert academics that, with their experience and success in their fields, can guide you to a creative future in the arts. There are huge opportunities along our courses to launch your future career - so don't blink, because before you know it, you'll have your work on display in our annual Art and Design Degree Show!



Our Art and Design area offers a variety of specialist courses designed to let you pursue your passions and career ambitions.

Architecture •
3D Designer Maker • Industrial Design • Photography • Fine Art • Graphic Design • Illustration • Animation • Surface Pattern • Fashion • Cartoon and Comic Arts • Art and Design • Product Design • Transport Design

“THE COURSE ALLOWS YOU TO EXPLORE EVERY AVENUE AS AN ARTIST AND REALLY WORK OUT WHAT IT IS THAT YOU ENJOY. I CAN'T RECOMMEND IT ENOUGH.”



RACHEL CLAY

BA (Hons) 3D DESIGNER MAKER

CONNECT WITH
OUR STUDENTS



FACILITIES

SMART ZONE

A £1.3m zone that fuses state-of-the-art fabrication spaces with augmented and blended reality facilities, allowing you to bring your ideas to life using the latest engineering, digital and immersive technologies.

DEDICATED STUDIOS

Our courses have studios dedicated and equipped for the needs of their subject, such as the cartoon and comic arts studio, that boasts Wacom Cintiq tablets and computing facilities that include Adobe Creative Suite, Manga Studio and Motion Artist.

WORKSHOPS

We have a large range of workshops for you to design and make the products of tomorrow, including our 3D workshops, which facilitate work with heavy and fine metals, wood, plastics, ceramics and resin, and are equipped with machinery including laser cutters, milling tools and 3D printers.

CAD MODELLING SUITE

Get access to our dedicated CAD modelling suite with industry relevant software including SolidWorks and Alias, as well as rendering packages like KeyShot.

GRAPHIC STUDIO

Our graphics studios and illustration workspace are an exciting creative hub, equipped with iMacs and industry-standard software, creative learning zones and state-of-the-art digital printing.

PRINT BUREAU AND ART SHOP

Book in jobs, pay for prints, collect work and get technical support using our collection of 3D printers that include Mojo, Up Box, Markforged Onyx One, Formlab 2, and Ultimaker 3. The Art Shop is stocked with an extensive range of goods offering professional quality creative materials at affordable prices, and specialist staff who work with academics and technical staff to advise students on the best materials.



CONNECTIONS



All our art and design courses are set up to help you to make the most out of your higher education experience, connecting with industry professionals through opportunities to travel to conventions and places of interests, as well as adding inspirational and successful guest lectures throughout.

Not only this, our courses allow you to showcase your work at different events, including our in-house Art and Design Degree Show, which attracts big names in the sector every year, and is attended by guests that include TV personalities, ceramists, and even Oscar nominated animators!



CAREERS

Once you've found your passion in the art and design world, we will help you hone your skills to get you career ready through work experience opportunities, showcasing and portfolio building.

The careers in this sector are endless. Our graduates have gone on to find success as internationally featured photographers and artists, innovative product and transport designers and fashion designers, or working at renowned companies in the animation, comic art and graphic design sectors.



CONNECT
WITH OUR
EXPERTS



**"FANTASTIC STUDIOS AND
WORKSHOP FACILITIES
ENABLE OUR ART AND
DESIGN STUDENTS TO GAIN
ALL THE SKILLS THEY WILL
NEED TO SUCCEED IN THE
CREATIVE INDUSTRIES!"**



**HUGH
WILLIAMSON**

HEAD OF ART AND DESIGN

MEET THE EXPERTS



**ADRIAN
TOOTH**

COURSE DIRECTOR
(CARTOON AND
COMIC ARTS)



**DAN
LEWIS**

COURSE DIRECTOR
(DESIGN)



**JOHN
HUDSON**

COURSE
DIRECTOR (VISUAL
COMMUNICATION)



**JESS
LONGMORE**

COURSE LEADER
(ART AND DESIGN
FOUNDATION)



**MICHAEL
BRANTHWAITE**

COURSE DIRECTOR
(VISUAL ARTS)



View our
courses online



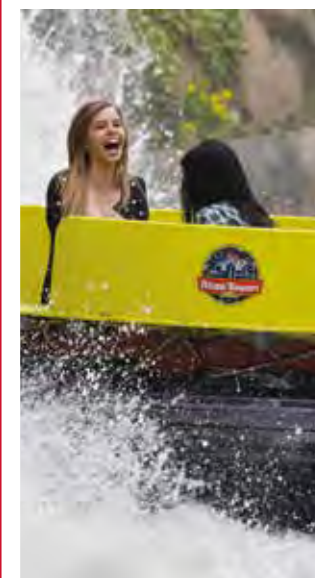
BUSINESS, FINANCE, AND LEISURE



BUSINESS, FINANCE AND LEISURE

Start your journey into future success with Staffordshire Business School. Whether you have a passion for entrepreneurship, marketing or resort management, or you want to climb the corporate ladder – we have the course for you.

All our courses have been re-designed to ensure that you're closer to industry than you've ever been, using the most up-to-date tools, research-led teaching and methods that are proven to succeed in ever-changing environments.



Our Business area offers a new suite of courses, designed to match your passions in the emerging industries.

**Business Innovation •
Entrepreneurship • Business
Management • Sustainability •
Finance and Business Enterprise
• Digital and Social Media
Marketing • Visitor Attraction
and Resort Management**

" ONE OF THE BEST THINGS ABOUT BEING A STAFFS UNI BUSINESS SCHOOL GRADUATE, IS THAT IT IS RECOGNISED AS A CENTRE OF EXCELLENCE. WHEN YOU GO TO INTERVIEWS AND TALK TO PEOPLE, YOU'RE REALLY PROUD BECAUSE THEY RECOGNISE STAFFS AS THIS CENTRAL HUB OF KNOWLEDGE AND EXCELLENCE FOR BUSINESS SUBJECTS."



**JESS
OLIVER**

STAFFORDSHIRE BUSINESS
SCHOOL GRADUATE

CONNECT WITH
OUR STUDENTS



FACILITIES

ENTERPRISE ZONE

Welcome to the Enterprise Zone, a place where, as a student, you are able to work and study alongside business start-ups from all over the country in a huge variety of industries. The Enterprise Zone houses unique facilities that take start-ups through idea generation, to creation and implementation such as the Collaboratory and the Incubator, both of which are key stages for building your new profile in entrepreneurship.

COLLABORATORY

A cleverly designed room to allow you to work together in teams. Communication is key in business and this space allows you to practice team dynamics in a safe environment.

TRANSITION ROOM

A space dedicated to you. The room has all the tech you need to work in groups on assignments, project plan and talk through your ideas.

LIBRARY RESOURCE

Get the knowledge you need to strengthen your understanding of the business world using our range of online and offline library resources, available for students 24/7.

TEACHING SPACES

Access a variety of teaching spaces to accommodate different teaching and learning styles, ranging from big 250-seater lecture theatres to cabaret style seminar spaces for teaching in the round.



CONNECTIONS

Staffordshire Business School is connected to industry through course design, professionally active academics, and business partnerships with the likes of Merlin Group. Our connections work together to give you the best chance of employability after you graduate and provide you with guaranteed work experience opportunities throughout your course.

What's more, we're always one step ahead of the game when it comes to forward-thinking business activities. We are soon to become part of a larger Centre for Business Innovation and Entrepreneurship, which gives you, as a student, the chance to experience real-world projects through start-up ventures and established stakeholders in business.



CAREERS

Our courses are designed to build the foundations of business you need to succeed in various future roles. All courses have a multidisciplinary first year, and allow you to follow your passions by applying specialist topics further along the courses.

Our graduates have had success in regional, national and overseas business in roles like business managers, public relations officers, entrepreneurs, operational researchers, accountants, marketing officers, and more.



CONNECT
WITH OUR
EXPERTS



"WE INCORPORATE LIVE BRIEFS AND WORK EXPERIENCE THROUGHOUT THESE COURSES, AND YOU EARN CREDITS FOR WORKING WITH EXTERNAL ORGANISATIONS. MODERN ORGANISATIONAL NEEDS SUCH AS SUSTAINABLE MANAGEMENT ARE ALSO BUILT INTO YOUR PROGRAMMES."



**HAZEL
SQUIRE**

HEAD OF DEPARTMENT
STAFFORDSHIRE BUSINESS SCHOOL

MEET THE EXPERTS



**CAROL
SOUTHALL**

COURSE DIRECTOR



**PROF. VISH
MAHESHWARI**

PROFESSOR IN
MARKETING



**KATHRYN
MITCHELL**

LECTURER
(BUSINESS)



**KARL
MCCORMACK**

SENIOR LECTURER
(ACCOUNTING)



View our
courses online



COMPUTING



COMPUTING

Computing underpins almost every industry in the world. Join the journey Staffordshire University has been travelling for over 50 years and get the skills you need to be in high demand in your future career.

Whether it's computer science, cyber security or artificial intelligence and robotics that you're interested in, we have the knowledge, expertise and state-of-the-art facilities you need to turn your passion into a career. Plus, with all our courses being accredited by the British Computer Society, offering additional professional certifications and guaranteed work placements, you'll be leaving Staffordshire University with more than just a degree.



Our computing area offers courses that cover the key areas in the modern industry.

Computer Science • Cloud Technologies • Internet and Web Management • Network Computing • Software Development • AI and Robotics • Cyber Security

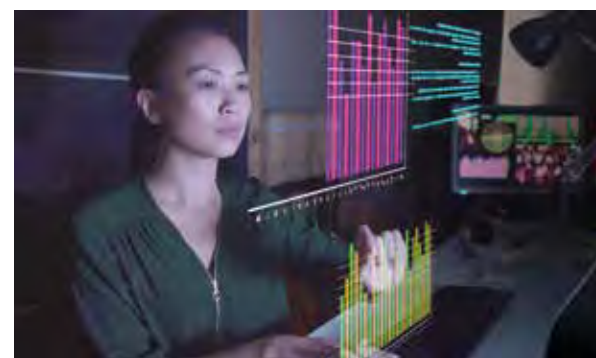
“ MY PLACEMENT WAS A YEAR WITH AIRBUS IN BAVARIA, GERMANY. THE EXPERIENCE WAS INVALUABLE AND WAS CERTAINLY MY FAVOURITE YEAR BEING A STUDENT.”



**JAMES
COOK**

BSc (Hons) COMPUTER
SCIENCE

CONNECT WITH
OUR STUDENTS



FACILITIES

NETWORKING LABS

Our network labs are connected by a CAB room which contains 400+ industry standard network devices, mostly Cisco and Cisco Meraki switches, routers, firewalls, wireless LAN controllers and network traffic generators.

SOFTWARE DEVELOPMENT ENVIRONMENTS

You'll have access to development environments for desktop, mobile and enterprise applications. Plus, get access to our iMac lab for iPhone and iPad development and a variety of mobile devices for testing.

CYBER SECURITY LABS

Access powerful forensic tools used in the recovery of data and criminal investigations in our cyber security labs. Discover the software which enables data recovery from a wide range of devices such as PCs, phones, mobile devices, watches and Sat Nav units.

DATA ANALYTICS CENTRE

Get access to software including Oracle and SQL Server, NoSQL data stores such as MongoDB, and technologies which support Hadoop. You'll also have physical and virtual environments to develop practical skills.

AI AND ROBOTICS LAB

Our Real Time Lab has a suite of 20, 6 axis programmable robotic arms, autonomous vehicles, micro-controllers, motor sensors and state-of-the-art design suites for embedded software programming and electronic design.

USABILITY LAB

Our Software Development and Internet and Web Management students can access our Usability Lab which is equipped with observation cameras and eye trackers to investigate how developed software works for different types of user.



CONNECTIONS

At Staffordshire University, we don't just connect you to knowledge, we offer every student the chance to make connections in the real-world through guaranteed work placements and professional certifications with the likes of Microsoft, Juniper and Cisco.

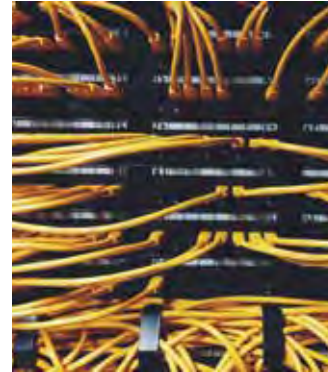
Each year, we place around 200 students with leading names in computing in the UK or overseas with companies like Sky, CERN, BAE Systems, BMW, IBM, and more!



CAREERS

Experts in computing are in demand in all types of industry, from retail and manufacturing, right through to finance and defence.

The career possibilities for our computing graduates are endless, and through our courses and pathways you will be able to find your passion while you study. Graduating students have gone on to enjoy success in roles like application programmers, IT systems analysts, web developers, software engineers and network administrators.



CONNECT
WITH OUR
EXPERTS



"OUR COURSES COVER ALL AREAS OF COMPUTING, ARE INDUSTRY RELEVANT, INCLUDE RELATED CERTIFICATIONS SUCH AS FROM AWS (AMAZON WEB SERVICES), AND ARE ACCREDITED BY THE BCS (BRITISH COMPUTER SOCIETY)."



**DR RUSSELL
CAMPION**

(ASSOCIATE PROFESSOR)
HEAD OF COMPUTING

MEET THE EXPERTS



**ROBIN
OLDHAM**

COURSE DIRECTOR
(COMPUTER SCIENCE)



**DR DAVID
DYKE**

COURSE DIRECTOR
(AI, ROBOTICS AND
BIG DATA)



**FIONA
KNIGHT**

SENIOR LECTURER
(COMPUTER SCIENCE)



**CHRISTOPHER
HOWARD**

COURSE DIRECTOR
(CYBER SECURITY)



View our
courses online



CRIMINAL JUSTICE AND INTERNATIONAL RELATIONS



CRIMINAL JUSTICE AND INTERNATIONAL RELATIONS

Are you the answer to creating a just society and a safe and sustainable future? Join the experts at Staffordshire University as we explore how to protect and serve our communities through a variety of courses focused on criminal justice and international relations.

Our courses focus on the whole of the justice sector, from understanding the factors that lead to injustice in international relations, global politics and criminology through to how to address these in frontline policing, forensics, intelligence and criminal investigations. When you combine these courses with expert academics, outstanding facilities and diverse partnerships, such as our Staffordshire Forensic Partnership, you have the perfect launchpad for a future career as the leaders of tomorrow.



Our Criminal Justice and International Relations area offers a variety of different courses depending on what you want to specialise in.

Criminology • Forensic Investigation • Policing • Criminal Investigation • International Relations • Forensic Science • History and Global Politics • Security and Intelligence • Forensic Psychology

"CRIMINAL JUSTICE WITH OFFENDER MANAGEMENT HAS A BRILLIANT BALANCE OF THEORY AND PRACTICAL WORK, INCLUDING TRIPS TO PRISONS AND SPEAKING WITH OFFENDERS, AS WELL AS LOVELY SUPPORTIVE STAFF."



ASHLEA TYLER

SOCIOLOGY, CRIMINOLOGY
AND TERRORISM STUDENT

CONNECT WITH
OUR STUDENTS



FACILITIES

COURTROOMS

Put legal theory into practice in our purpose-built and digitally-equipped mock courtrooms. Here you can experience the pressures of the court environment, whether that is giving evidence in a court of law or presenting your argument at Model NATO.

FORENSIC AND SECURITY LAB

Our Forensic Computing and Cyber Security Lab contains dual screen PCs bound within a dedicated and isolated network. Our own, in-house developed, virtual machines and environment enables several types of cyber protection to be developed and ethical hacking to take place.

INTERVIEW SUITES

Whether supporting victims of crime, interviewing suspects or collecting witness testimonies, our interview rooms are ideal for developing these key skills, as well as observing and reflecting on different interview scenarios.

CRIME SCENE HOUSE

We have a dedicated Crime Scene House fitted with CCTV and two-way audio which gives the option for both internal and external crime scenes, so you can hone your investigative and crime scene examination skills.

BALLISTICS ROOM

Our ballistics room gives students confidence in their practical skills to go into jobs such as ballistics research or firearms investigation. You will learn how to safely handle weapons, conduct test firing and ricochet analysis, and learn how to recover ammunition and pellets. You will then be equipped with the skills and knowledge to report your findings in a court of law.

BLOOD ROOM

Simulate blood shed at crime scenes in our Trauma Analysis Facility. We have two wet rooms fully equipped with all of the weapons and other equipment you will need to reconstruct different patterns found at a crime scene. You can also interpret blood spatter patterns to assist with criminal investigation and refute or support a suspects version of events.



CONNECTIONS

Studying one of the criminal justice and international relations courses at Staffordshire University means that you will be constantly connected to our teams of expert academics, who have years of experience succeeding in the careers that you might be aiming for.

Many of our courses have professional accreditation from organisations such as the Chartered Society of Forensic Sciences, or are delivered under licence from the College of Policing. We also have exciting opportunities on all courses for work placements, so you can put academic theory and knowledge into practice in real-world environments – an invaluable asset when launching your career.



CAREERS

As the world evolves, so do the challenges and opportunities within the criminal justice, civil justice and public service sectors. Graduates of our criminal justice and international relation degrees are prepared for these careers, whether it's working in the global political environment, undertaking criminal investigations or developing rehabilitation strategies for young offenders.

Our students have gone on to work at the top level within various governments, including one prime ministerial role, and others have gone on to successful roles within forensic, policing, probation and other criminal justice organisations.



CONNECT
WITH OUR
EXPERTS



"OUR REIMAGINED COURSES PUT RESEARCH AND THE FUTURE OF FORENSICS AT THE VERY CENTRE OF YOUR STUDIES. WE WANT OUR STUDENTS TO BE THE LEADERS INTERNATIONALLY IN FORENSIC THINKING AND DESIGN, THEREFORE WE HAVE BUILT COURSES THAT ALLOW FOR HANDS-ON EXPERIENCE AND CREATIVE DISCUSSION IN PARTNERSHIP WITH LECTURERS AND RESEARCHERS."



**DUNCAN
PARKER**

COURSE DIRECTOR
(FORENSICS)

MEET THE EXPERTS



**DR LAUREN
METCALFE**

COURSE DIRECTOR
(POLICING)



**LOUIS
MARTIN**

PATHWAY COURSE
LEADER (CRIMINOLOGY
WITH OFFENDER
MANAGEMENT)



**DR TONY
CRAIG**

ASSOCIATE
PROFESSOR
(MODERN HISTORY)



**DR FAHID
QURASHI**

LECTURER
(CRIMINOLOGY AND
SOCIOLOGY)



View our
courses online



EDUCATION AND TEACHING



EDUCATION AND TEACHING

Does guiding the next generation to success excite you? At Staffordshire University, we have a suite of courses dedicated to help you become the next educational professional, whether you're looking to make waves in the classroom, or coach and train professionals to be the best they can be.

Whether you aspire to teach, coach or develop your existing career with additional qualifications, we have the course for you. Our expert academics and carefully designed training and development courses allow you to continue your educational journey and hit the ground running after you graduate.



Our Education portfolio offers a variety of different options, depending on your ambitions.

Primary Education Qualified Teacher Status • Early Childhood • Special Educational Needs and Disability • Education Studies • Physical Education • Sports Coaching • Football Coaching and Performance

"I FEEL THAT THE COURSE STRUCTURE IS A REAL POSITIVE AT STAFFORDSHIRE UNIVERSITY; DELIVERING A SUCCESSFUL BALANCE OF UNIVERSITY SESSIONS AND SCHOOL EXPERIENCE."



ANITA SMITH

BA (Hons) PRIMARY EDUCATION WITH QTS

CONNECT WITH OUR STUDENTS



FACILITIES

OUTREACH SERVICES

Get access to a range of high quality placements. We work with over 50 high performing early years settings and schools within the local area and in Birmingham, the Black Country, Shropshire, Manchester, Derbyshire and beyond.

LIBRARY RESOURCE

Get the knowledge you need to strengthen your understanding of the education environment using our range of online and offline library resources, available for students 24/7.

TEACHING SPACES

Access a variety of teaching spaces to accommodate different teaching and learning styles, ranging from big 200-seater lecture theatres to cabaret style seminar spaces for teaching in the round. As well as the above and the facilities offered on placement you will be able to practice in simulated classrooms with a full range of practical equipment needed to facilitate learning.

IT LABS

Education is run on technology in today's world. Whether it's getting to grips with giving Zoom lectures, or exploring the possibilities of digital interactivity, our IT labs will have the professional-grade facilities you need to make a difference.

PRACTICAL COACHING AREAS

We have an indoor sports hall, outdoor 3G surfaced AstroTurf pitches, biomechanics and strength and conditioning laboratories on campus. Also, you'll find a 25m swimming pool and 400m athletics track within walking distance of the campus.

SPECIALIST SPORTS LABS

Improve your knowledge in our specialist laboratories in Biomechanics, Strength and Conditioning, Sports Therapy, Sports Psychology, Sport and Exercise Physiology and IT labs with specialist software such as Dartfish and Tacklesport.



CONNECTIONS

At Staffordshire University, we have established a large network of links and partnerships with schools and colleges across the region and beyond. This means that as a student with a profound interest in launching your career in the education sector, you'll be guaranteed the relevant placement and work experience you need to set you up for the future.

You might choose to complete work experience in school and college settings, or you might find your passions lie delivering education in different settings, including coaching sports teams or at private training organisations.



CAREERS

Our Primary Education with QTS allows you to teach after graduation. As a graduate of other courses in our education area, you will be perfectly set up to apply for a postgraduate PGCE or relevant qualification to complete your transition from student to teacher and gain your qualified teacher status.

However, we do have graduates that have chosen different paths that utilise their educational degrees, travelling overseas to teach specialist subjects, or entering the world of football coaching at established teams across the UK.



CONNECT
WITH OUR
EXPERTS



" AS A TEAM OF EXPERIENCED TEACHERS, SCHOOL LEADERS AND RESEARCHERS, WE ARE ALL PASSIONATE ABOUT EDUCATION AND LOVE SHARING OUR EXPERIENCE WITH OUR STUDENTS. OUR COURSES COMBINE THIS WITH PRACTICAL EXPERIENCE IN SCHOOLS AND OTHER PARTNERSHIPS WORKPLACES TO ENABLE YOU TO DEVELOP INTO THE OUTSTANDING PRACTITIONER THAT YOU WANT TO BE."



**CATHY
RUTHERFORD**

SENIOR LECTURER
(PRIMARY EDUCATION)

MEET THE EXPERTS



**DR RUTH
HUDSON-GILL**

COURSE DIRECTOR
UNDERGRADUATE
PROGRAMMES IN
EDUCATION



**DAN
DAWSON**

COURSE DIRECTOR
(PE AND YOUTH
SPORT COACHING)



**DR FIONA
HALL**

SENIOR LECTURER
(EDUCATION STUDIES)



**DR ALEX
BLACKETT**

SENIOR LECTURER
(SPORTS COACHING)



View our
courses online



ENGINEERING



ENGINEERING

Welcome to the world of engineering – one of the key subjects if you want to be a pivotal cog in the construction and development of tomorrow's world.

At Staffordshire University, we have a long heritage in providing students with the tools and expertise they need to flourish in a variety of engineering sectors, including design, mechanical, automotive, electrical and aeronautical. We combine traditional and tested methods with an innovative and forward-thinking approach to give you the best chance of making a difference in Industry 4.0, machine learning and the future of engineering.



Our engineering area offers future-focused courses spanning across various sectors.

**Aeronautical Engineering •
Automotive and Motorsport
Engineering • Electrical and
Electronic Engineering •
Mechanical Engineering •
AI and Robotics • Engineering
Design • General Engineering**

**" THE GREAT THING ABOUT
STAFFORDSHIRE UNIVERSITY IS NOT JUST
THE COURSE, BUT THE OPPORTUNITIES
THAT ARE OFFERED ALONGSIDE
STUDYING. MY ADVICE TO STUDENTS
IS TO TAKE EVERY OPPORTUNITY
AVAILABLE IN ORDER TO ACHIEVE YOUR
CAREER ASPIRATIONS."**



**LAURA
DAVIES**

BSc (Hons) AERONAUTICAL
ENGINEERING

CONNECT WITH
OUR STUDENTS



FACILITIES

ENGINEERING LABS

Work in our professional standard labs, packed with state-of-the-art software and hardware resources reflecting current trends in the development of engineering and technology subjects.

THERMOFLUIDS AND AERONAUTICAL LAB

Understanding the interaction between air and objects, particularly at their surfaces, is key to the design and operation of aircraft. Facilities in this laboratory allow practical measurement which is then augmented by computer-based flow simulation and modelling.

REVERSE ENGINEERING LAB

Our Reverse Engineering Laboratory contains 3D scanning capability, additive manufacturing machines featuring PolyJet, FDM, 3DP processes, as well as laser engraving ability.

REAL-TIME LAB

Our Real-time Lab has a suite of 20, 6 axis programmable robotic arms, autonomous vehicles, micro-controllers, motors, sensors and state-of-the-art design suites for embedded software programming and electronic design.

SMART ZONE

Our £1.3m Smart Zone contains two floors of dedicated workshop space for engineering and creative students around the University, with the latest in digital technology and high-end computing facilities.

RENEWABLE ENERGY LAB

Use the latest equipment in our range of renewable energy focused laboratories, including a state-of-the-art Power Systems Lab, that provides real-time testing and development facilities for use in electrical engineering, and other areas such as the Thin Film Lab (work for plastic electronics), our wind tunnel, and our high voltage cage.



CONNECTIONS

Staffordshire University has the connections and partnerships that can take you to the next level of your career in engineering. We offer guaranteed work experience to every student to complete their well-rounded practical and theoretical education.

Work experience can be with partners that include the MoD and the RAF, or with some of our linked private companies like Bentley, Jaguar Land Rover, JCB, AstraZeneca, and more. There's not just the chance to connect with industry through work experience either, every day you will be taught by well experienced professionals from industry and be given the opportunity to showcase your work at our GradEx show as part of your course.

CAREERS

Engineers are critical for the maintenance and evolution of our world throughout history, but arguably, they have never been more critical as they are right now.

Our courses are designed to give you the best chance to make a difference in the sector. We have successful graduates working in sectors including mechanical engineering, automotive, transport, consultancy, energy generation, electronics and aviation.



CONNECT
WITH OUR
EXPERTS



"THE FUTURE OF ENGINEERING IS IN THE HANDS OF OUR STUDENTS. THEY WILL BE THE ONES WHO INNOVATE, DEVELOP AND USE THE TECHNOLOGIES, SOME OF WHICH HAVEN'T BEEN INVENTED YET!"



CHRIS WAYMAN

SENIOR LECTURER
COURSE LEADER (ENGINEERING DESIGN)

MEET THE EXPERTS



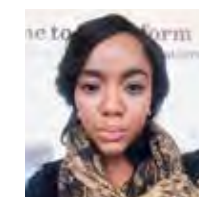
DEBI ROBERTS

COURSE DIRECTOR
(TRANSPORT
ENGINEERING)



DR EVANGELIA GANNIARI-PAPAGEORGIOU

COURSE DIRECTOR
(MECHANICAL
AND GENERAL
ENGINEERING)



KUDAKWASHE ONIKO

COURSE LEADER
(GENERAL
ENGINEERING)



DR ANAS AMJAD

COURSE DIRECTOR
(ELECTRICAL &
ELECTRONIC
ENGINEERING)

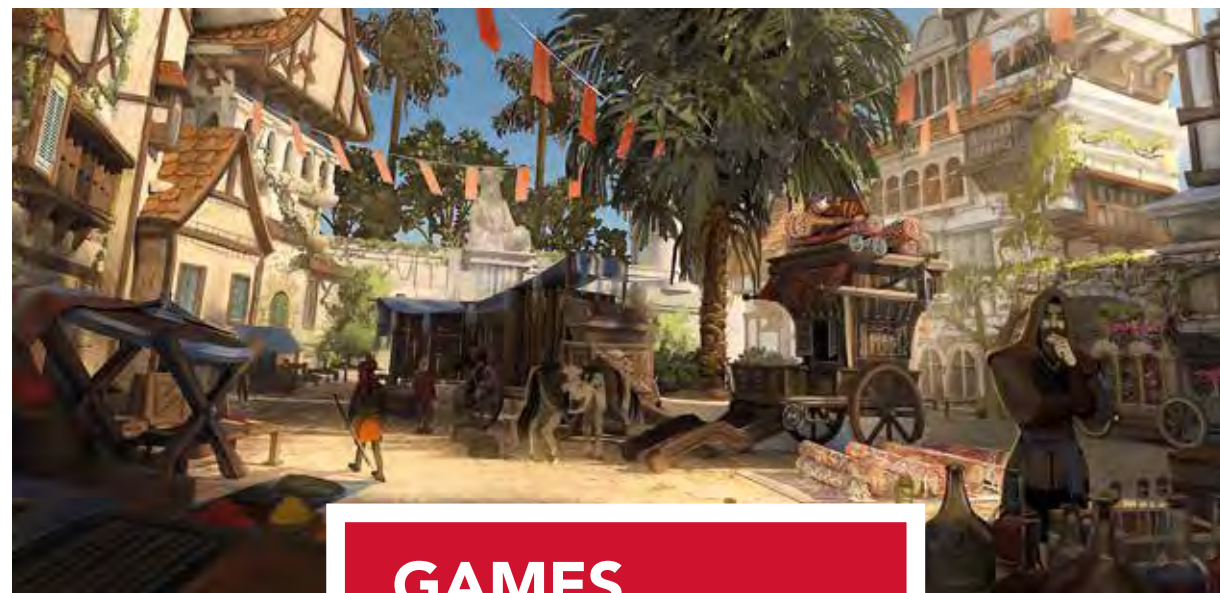


View our
courses online



GAMES

102



GAMES

Welcome to the biggest
entertainment industry in the world.
Study at the number 1 educational
institution for Games* and turn your
passion into a career.

Do you want to create the next AAA Game? If
you're interested in being part of creative teams
as a games designer, programmer, developer or
artist, or maybe as an animator or community
manager, then we have the course for you. We'll
support you to burst into the games industry
with industry level expertise and connections,
and our professional grade design, programming
and production facilities.

*TIGA Games Awards 2020



103

Our games area includes a huge variety of courses that cover the entire cycle of the video games industry.

Games Design • Games Programming • Games Development • Augmented and Virtual Realities • Animation • Games Art • Concept Art • CGI and Visual Effects • Esports • Community Management

" THE COURSE IS TOUGH BUT REWARDING, AND THE FACILITIES AT STAFFS ARE GREAT. THERE ARE ENDLESS JOB OPPORTUNITIES FOR PROGRAMMERS IN THE FUTURE AND OVERALL, GOING TO STAFFS WAS THE BEST CHOICE I COULD HAVE MADE."



**ISAAC
HUDD**

BSc (Hons) COMPUTER
GAMES PROGRAMMING

CONNECT WITH
OUR STUDENTS



FACILITIES

EPIC GAMES LAB

Home to the Epic Games Design Centre, our lab is fully equipped with the latest software engines and computing hardware to give you a professional design and programming experience.

ESPORTS HUB

The Esports Hub houses dedicated broadcasting and competitive games facilities that are designed to allow you to practice large scale entertainment set ups in an intimate environment. The hub includes 6x6 4k gaming rigs, dedicated commentator and presenter desks, and broadcasting facilities including a Yamaha Audio mixing desk, and industry grade studio lighting, cameras and autocue.

MOTION CAPTURE STUDIO

The Motion Capture Studio allows students to capture the motion of multiple human movements simultaneously in the creation of high quality motion

sequences for games, animation and VFX. Full body and facial motion can be captured through a variety of props, a 24 camera (using specialist Vicon hardware) rig, Cara facial performance capture headset and highly skilled, on-hand technical expertise.

VR, AR AND MIXED REALITY LAB

Our VR, AR and Mixed Reality Lab is a creation station, equipped with a number of Vive Virtual Reality headsets, new haptic technologies, and a dedicated development area to create, develop and test VR and AR solutions for entertainment and commercial applications.

ANIMATION STUDIOS

Our well-equipped animation studios house a number of resources, including: Cintiq suites for 2D and 3D digital animation, a 4K edit suite, sound recording booths, access to motion capture technology, and a dual-screen PC digital suite with software including MAYA and TOON BOOM.



CONNECTIONS

No matter which games course you study, you'll have opportunities to build connections key to your future career. Every Games student is given free Ukie Student Membership. Meaning you get news, placements opportunities, events and jobs directly sent to you by the industry.

There are also opportunities to make connections within the University. Every year, commercial games studios such as Rockstar Games, D3t, Red Kite Games, Sumo Digital, Boss Alien and Flix Interactive are invited in to interview our students for graduate positions. As members of the PlayStation® First Academic Program run by Sony, we have access to professional development hardware and software tools. We also have a unique partnership with industry giants TeamSpeak for our esports and communities courses, allowing our students to use TeamSpeak to create seamless productions, and to manage players and broadcast crews working in remote locations around the globe.

CAREERS

Studying for a degree on one of our games courses will give you access to an entertainment industry with a bigger audience than the music and film sector combined. In this evolving industry, new and exciting games need to be more than just entertainment, they need to be adaptable, competitive, marketable and manageable – and that's where you will come in.

As a graduate, you will be following in the footsteps of our past students going off to the likes of Aardman, Naughty Dog, Playground Games, Codemasters, Framstore, Moving Picture Company and more.



CONNECT
WITH OUR
EXPERTS



**"AT STAFFORDSHIRE UNIVERSITY
WE ARE PASSIONATE ABOUT
GAMES AND OUR STRONG
LINKS WITH INDUSTRY HELP
TO PROVIDE GRADUATES
WITH A DISTINCT EDGE WHEN
IT COMES TO CARVING OUT
CAREERS IN GAMES."**



**DR BOBBIE
FLETCHER**

HEAD OF DEPARTMENT –
ASSOCIATE PROFESSOR

MEET THE EXPERTS



**NIA
WEARN**

COURSE DIRECTOR
(ESPORTS, GAMES
STUDIES AND
COMMUNITIES)



**GREG
PENNINCK**

COURSE DIRECTOR
(GAMES DESIGN)



**DAVE
EDWARDS**

COURSE DIRECTOR
(GAMES ART AND
CONCEPT)



**STUART
BUTLER**

COURSE DIRECTOR
(GAMES
TECHNOLOGY)



**ALEXANDER
JACKSON**

COURSE DIRECTOR
(ANIMATION
AND VFX)



View our
courses online



HEALTH AND WELLBEING



HEALTH AND WELLBEING

Help yourself to help others with a degree in one of our health and wellbeing areas and make a difference to the generations of tomorrow.

We are specialists in what we do, combining clinical and medical work experience with expert academics that have been there in the field, and professional accreditations that can give you another level of recognition in your chosen area. So, whether you're looking to delve into one of our frontline courses in nursing, midwifery, paramedic science, operating department practice, health and social care, taking on the human mind in a psychology course, or developing future cures in the biomedical and biological sciences – you need to look no further.



Our health and wellbeing area has a variety of courses that focus on different sectors within the industry.

**Nursing • Paramedic Science •
Midwifery • Biomedical Science •
Operating Department Practice •
Health and Social Care •
Psychology • Counselling •
Sports Therapy • Biological Sciences**



"I MADE SOME AMAZING FRIENDS DURING MY TIME HERE; NOT TO MENTION THE ENCOURAGEMENT AND POSITIVE VIBES GIVEN BY THE STAFF AND MY MENTORS ON PLACEMENT. THEY'VE HELPED ME ACHIEVE MY LIFELONG AMBITION OF BECOMING A PARAMEDIC."



KATIE HILL

BSc (Hons) PARAMEDIC GRADUATE

CONNECT WITH OUR STUDENTS



FACILITIES

CLINICAL SIMULATION SUITES

These state-of-the-art labs allow a number of clinical procedures to be simulated on mannequins, enabling students to reach a level of confidence and proficiency before carrying out procedures on real patients.

CLINICAL TRAINING FACILITIES

Our labs provide the environment for you to learn fundamental skills that you will need to deliver high quality care in your future role of pre-hospital care. This includes advanced patient assessment techniques, airway management, obtaining intramuscular, intravenous and intraosseous access and advanced life-support skills.

ANALYTICAL CENTRE

Our Analytical Centre includes a wealth of analytical kit that enables detailed analysis and understanding of compounds and metabolites of interest in disease and also in the design, development and use of drugs for therapy.

HUMAN SCIENCES SUITE

The Human Sciences Suite has an impressive array of laboratory equipment supported by experienced technical and research staff. This includes the Electroencephalographic (EEG) Laboratory; The Pain Laboratory, The Cardiovascular Laboratory and the Clinical Biochemistry Laboratory.

SCIENCE CENTRE

Our £30m Science Centre is a hive of exploration, discovery and eureka moments. It contains specialist labs that delve into the areas of psychology, biomedicine, biology and more where you can practice and refine your practitioner skills.

PARAMEDIC TRAINING AMBULANCE

Paramedic students and other student clinicians who may have pre-hospital involvement, can hone their skills in our very own fully kitted training ambulance, which allows our students to practice realistic scenarios and to prepare for their placements.



CONNECTIONS

No matter which health and wellbeing course you study, you'll have the chance to put your skills to the test in real-world environments. Every course comes with guaranteed work experience opportunities so you can back up your study and practice with professional experience.

When you're aiming for a career in health and wellbeing, gaining experience from areas within both the public and private sectors is important. At Staffordshire University we have existing partnerships with various private companies, and a long-standing history of providing placements within the NHS Trusts, independent and voluntary sector.



CAREERS

When you're looking to enter a career in health and wellbeing, you'll often find yourself targeting a particular role or sector through your studies. So, whether you're looking to work as a nurse, bioscientist, paramedic, scientist, or psychologist – it's important that you choose the right path to advance your career.

At Staffordshire University, we have successful graduates that are actively contributing to their respective fields in places like the West Midlands Ambulance Service and NHS environments around the UK. Depending on the course you study, there are also opportunities to progress into teaching roles, research-led roles, and counselling roles.



CONNECT
WITH OUR
EXPERTS



"OUR EXPERTISE IN SIMULATION-BASED EDUCATION MATCHES OUR FIRST-CLASS FACILITIES. WE ENSURE OUR STUDENTS – THE FUTURE HEALTHCARE WORKFORCE – LEAVE US EQUIPPED THE SKILLS AND 'REAL-WORLD' EXPERIENCE THEY NEED TO BE CONFIDENT AND COMPETENT PRACTITIONERS."



**EMILY
BROWNE**

SCHOOL LEAD FOR
SIMULATION-BASED EDUCATION

MEET THE EXPERTS



**GAVIN
JOHNSON**

COURSE DIRECTOR



**DR SARAH
WILLIAMS**

COURSE DIRECTOR
(BIOMEDICAL SCIENCE)



**HELEN
ASHWOOD**

COURSE DIRECTOR
(NURSING)



**DR MANI DAS
GUPTA**

SENIOR LECTURER
(PSYCHOLOGY AND
COUNSELLING)



View our
courses online



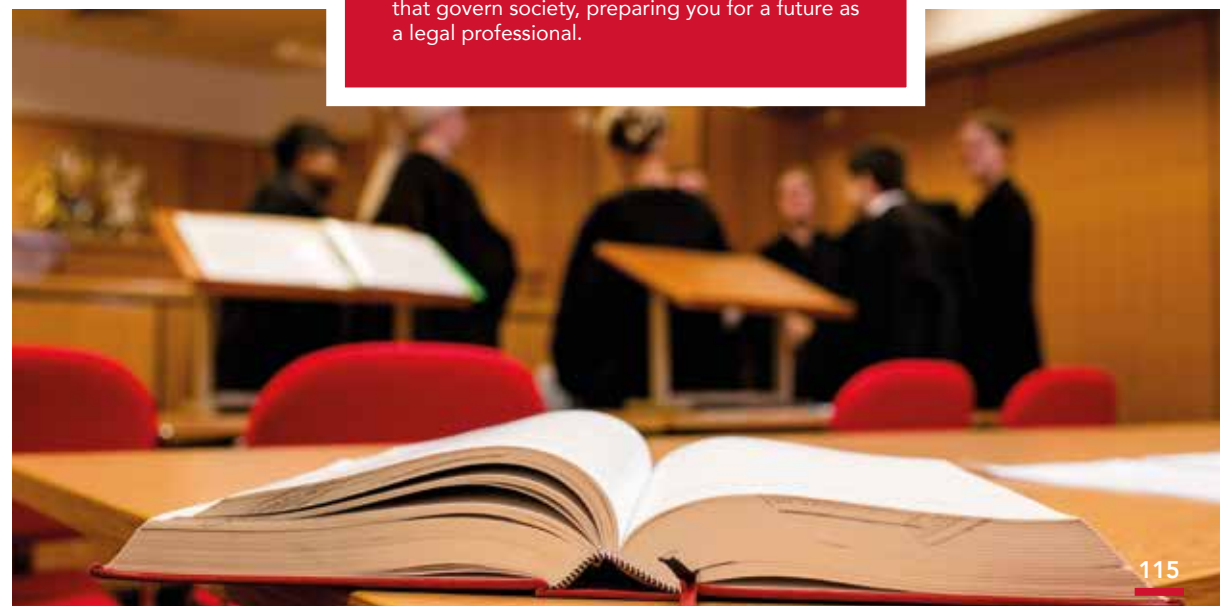
LAW



LAW

Take the law in new directions with our specially designed courses, dedicated to giving you the skills and expertise you need to practice law in professional environments.

All of our law degrees facilitate progression to the next stage of training for the legal professions, in line with qualifying routes set out by the Solicitors Regulation Authority and the Bar Standards Board. We are committed to building your expertise, whatever your future legal aspirations. With our team of expert academics, legal professionals, specialist facilities and legal connections, you will learn about and develop practical experience in the principles that govern society, preparing you for a future as a legal professional.



Our law area provides you with the pathways to practice law in a range of different environments.

Law • Digital Law • Professional Law • Bar • Legal Advice Clinic • Mooting • Criminal Law • EU Law • Legal System

" THE LECTURERS ARE ALWAYS SUPPORTIVE, AND THE TUTOR SYSTEM IS VERY EFFECTIVE. WE HAVE BEEN ABLE TO SHAPE OUR DEGREE IN THE WAY WE WANT, LEARNING THE SUBJECTS THAT INTEREST US. I WOULD HIGHLY RECOMMEND THE COURSE AND BELIEVE IT HAS SET ME UP VERY WELL FOR FUTURE."



NASEEM KHAN

LLB (HONS) LAW GRADUATE

CONNECT WITH OUR STUDENTS



FACILITIES

COURTROOMS

Put legal theory into practice in our purpose-built and digitally-equipped mock courtrooms. Here you can experience the pressures of the court environment, whether that is giving evidence in a court of law or presenting your argument at a mooting competition.

INTERVIEW SUITES

Whether interviewing clients or preparing witnesses for court, our interview rooms are ideal for developing these key skills, as well as observing and reflecting on different interview scenarios.

STAFFORDSHIRE UNIVERSITY LEGAL ADVICE CLINIC

Enabling students to gain real life experience working within the community, our law clinic offers free legal advice, on a variety of subjects, to the public and to certain specific sectors of the local community. SULAC provides Staffordshire Law students the unique opportunity to experience the process of applying law to real life situations in some truly innovative settings.

CRIME SCENE HOUSE

Experience law in a range of settings, with our Crime Scene House and Community House. Our range of facilities enable you to experience all aspects of law, whether this is social work, criminal, negligence or family law.

LIBRARY RESOURCE

You will have all the legal knowledge you need at your fingertips to find appropriate case law, both online (including Law Trove) and in our on campus libraries, available for students 24/7.

SIMULATION SUITE

Immersive learning is key to developing your practical legal skills. The state-of-the-art simulation labs allow us to run a variety of activities in different virtual environments, by projecting scenarios on to the walls. Recording equipment also provides students with the opportunity to reflect on their own performance.



CONNECTIONS

Our law courses are designed to connect you with practising and experienced professionals via guest lectures and our extensive legal networks, as well as providing opportunities to undertake work placements as part of your degree.

Not only this, we have our very own innovative and exciting legal advice clinic (Staffordshire University Legal Advice Clinic) which enables you to gain real-life experience working within the community, offering free and confidential legal advice on a variety of subjects. This will give you the chance to apply your learning and begin to help the community whilst you're still studying, and is an invaluable asset to your employability profile.

CAREERS

At Staffordshire University, we have years of experience in helping students start successful careers in law. There are a number of ways you can utilise your degree in local or national law firms, both general and specialist.

With a degree in law from our university, you are also prepared for a postgraduate and professional legal qualification, leading on to a future as a barrister, solicitor or legal executive.

Law degrees are very well regarded, so your LLB degree will set you up for a wide range of legal and non-legal careers.



CONNECT
WITH OUR
EXPERTS



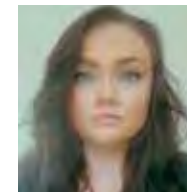
"STUDY IN A SUPPORTIVE AND FRIENDLY ENVIRONMENT, WITH LECTURERS WHO HAVE A WIDE RANGE OF ACADEMIC EXPERTISE AND PRACTITIONER EXPERIENCE, AND BECOME PART OF OUR LAW ACADEMIC COMMUNITY, WHERE WE CAN SUPPORT YOU WITH REGULAR CAREER UPDATES, ADVICE AND OPPORTUNITIES."



**ANNA
GARLAND**

UNDERGRADUATE LAW
COURSE DIRECTOR

MEET THE EXPERTS



**SAMANTHA
SPENCE**

LECTURER (LAW)



**AIDAN
FLYNN**

SENIOR
LECTURER (LAW)



**TRACEY
HORTON**

SENIOR LECTURER
(LAW) AND LEGAL
ADVICE CLINIC
MANAGER



**PAUL
ALLEN**

HEAD OF
DEPARTMENT (LAW)

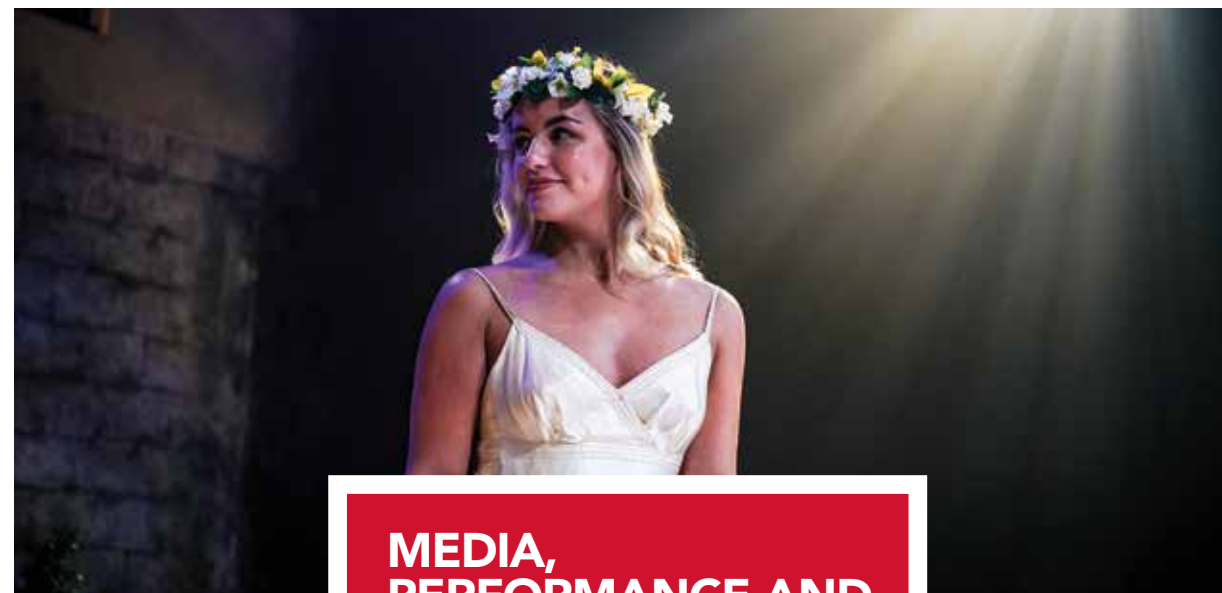


View our
courses online



MEDIA, PERFORMANCE AND COMMUNICATION

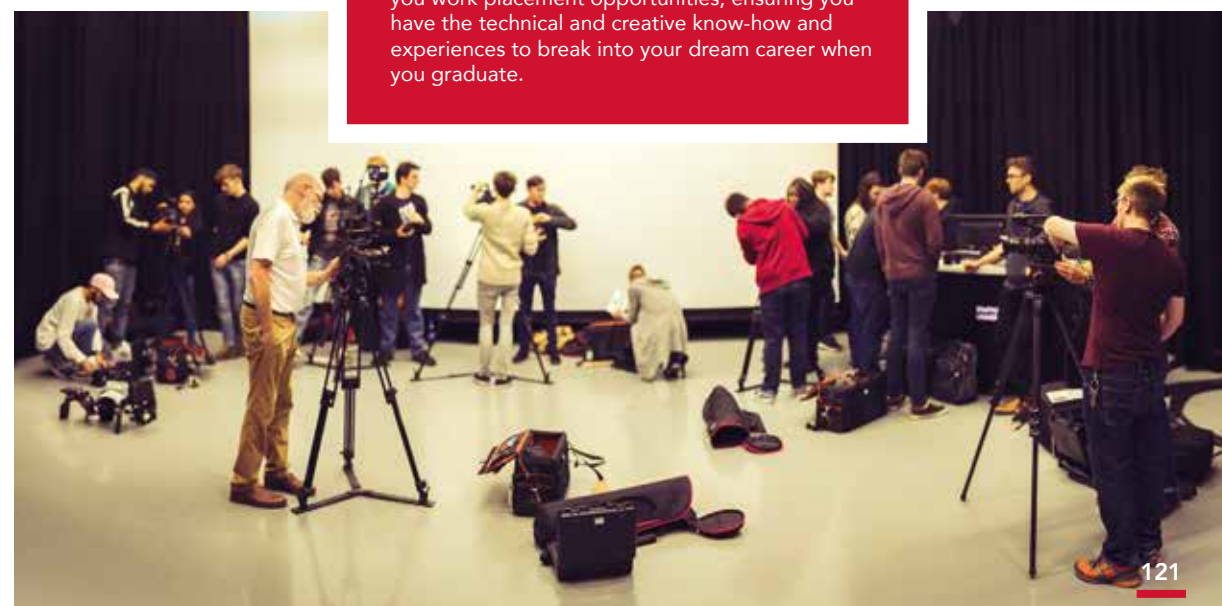
120



MEDIA, PERFORMANCE AND COMMUNICATION

Media, performance and communications are becoming more important than ever in reaching audiences in both the entertainment and business sectors. Study one of the courses that suit your interests at Staffordshire University and embed yourself in a growing set of industries!

Whether you see yourself as a filmmaker, a writer, a journalist, a content creator or a musician, or even if you want to be the next actor or director, we have the course for you. All our courses are taught with industry professionals and guarantee you work placement opportunities, ensuring you have the technical and creative know-how and experiences to break into your dream career when you graduate.



121

Our Media, Performance and Communication area boasts a variety of courses that put you in the limelight or behind the scenes in modern day media.

Stage and Screen Acting • English Literature • Creative Writing • Film and Media Production • Film, TV and Radio • Animation • Digital Media • Journalism • Sports Journalism • Sports Writing and Broadcasting • Music • Sound Design • Digital and Social Media Marketing

"THE SKILLS YOU WILL LEARN AND DEVELOP DOING FILM, TV AND RADIO WILL BE HUGELY VALUABLE, I DISCOVERED SKILLS I NEVER KNEW I HAD UNTIL THE COURSE REQUIRED ME TO FIND AND USE THEM."



JADE MCKENNA

BA (Hons) FILM, TV AND RADIO GRADUATE

CONNECT WITH
OUR STUDENTS



FACILITIES

HDTV CENTRE

Check out our HD Television Centre, which is equipped with broadcast standard technologies, green room, vision gallery and a comprehensive racks room.

RADIO STUDIOS

We have three professionally equipped radio studios housing a range of specialist news production and music scheduling software (Burli, Myriad) and professional hardware (Sonifex S2 mixing desks, ISDN units).

POST-PRODUCTION SUITES

Get to grips with over 50 industry standard editing suites designed to perfect the edit, colour and sound mixes on media productions.

MULTI-PLATFORM NEWSROOMS

Our multi-platform newsrooms house 76 iMacs complete with all the software necessary for multi-platform Journalism (Adobe InDesign, Adobe Photoshop, Adobe Premiere Pro, Adobe Audition).

MUSIC AND SOUND LABS

The two Music and Sound labs are equipped with 50 Macs running Pro Tools, Logic, Ableton Live, Max, Adobe Creative Suite, NI Komplete, and more. The labs also house an electronic music workstation comprised of modular analogue and digital synths.

RECORDING STUDIOS

The recording studio complex features five control rooms and four live rooms, with an additional mastering facility. The rooms are fully interconnected (audio and video) and equipped with a range of industry-standard mixing consoles, surround monitoring, microphones, instruments and amplification.

PERFORMANCE CENTRE

Our Performance Centre has four rehearsal studios, set and costume construction workshops, a props and costume store, and a green room. Studio One, our main performance space, holds up to 70 seats and has professional stage management, lighting and sound equipment.



CONNECTIONS

Our media, performance and communication courses are practically-led, connecting you to professional-standard equipment, and giving you the ability to showcase your work to industry practitioners in conventions and what's more – every single course gives you the chance to connect with real-industry in guaranteed work experience opportunities.

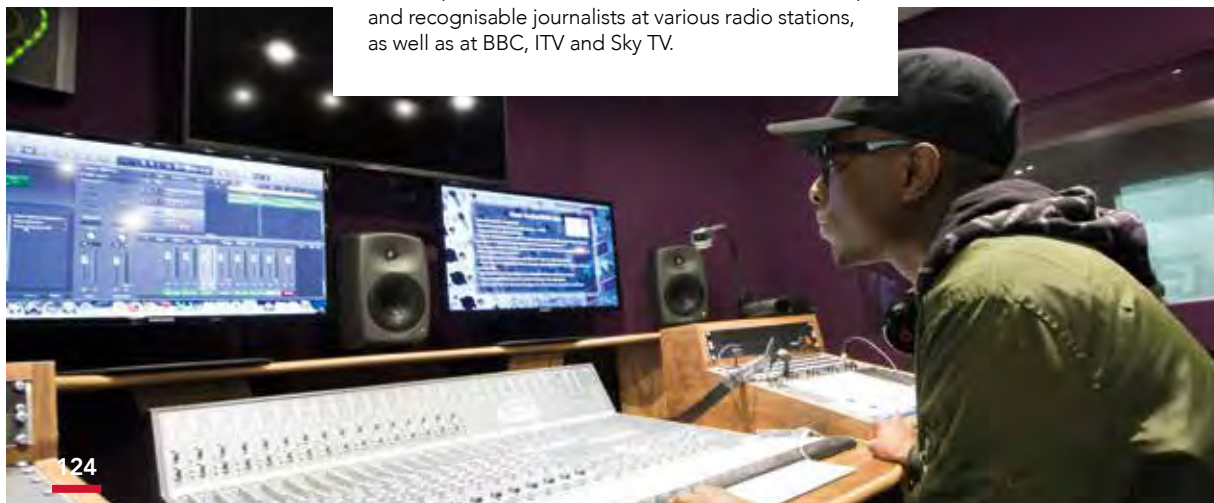
So, whether you're performing to the masses in a stage production, designing sound bites for advertising agencies, or providing match reports and insights using our established links at Sky Sports and Eurosport – you'll be able to gain invaluable experience and build your portfolio from the word go.



CAREERS

There are more careers in media, performance and communication than you can imagine. Whether you are focused on a particular area, or you just have a keen interest in a particular field, we can help you turn that passion into a successful future.

We have successful graduates that work in a variety of roles; from writers, videographers and content creators, to on-screen talent of the likes of Amit Shah, and recognisable journalists at various radio stations, as well as at BBC, ITV and Sky TV.



CONNECT
WITH OUR
EXPERTS



"OUR MEDIA, PERFORMANCE AND COMMUNICATION COURSES WILL EQUIP YOU TO BE THE VERY BEST PRACTITIONERS, ARTISTS AND CREATORS OF THE FUTURE. EACH COURSE ALLOWS YOU TO SPECIALISE IN THE AREAS OF YOUR CHOOSING, EMBRACING YOUR PERSONAL INTERESTS TO DEVELOP YOUR CRITICAL AND CREATIVE CAPABILITIES."



**DR ROB
MARSDEN**

HEAD OF DEPARTMENT

MEET THE EXPERTS



**PAUL
CHRISTIE**

COURSE DIRECTOR
(ACTING FOR STAGE
AND SCREEN)



**STEPHEN
GRIFFITHS**

COURSE DIRECTOR
(FILM AND MEDIA)



**DR MELAINE
EBDON**

SENIOR LECTURER
(ENGLISH AND
CREATIVE WRITING)



**DR MARK
BROWN**

COURSE DIRECTOR
(SOUND AND
COMMUNICATIONS)



View our
courses online



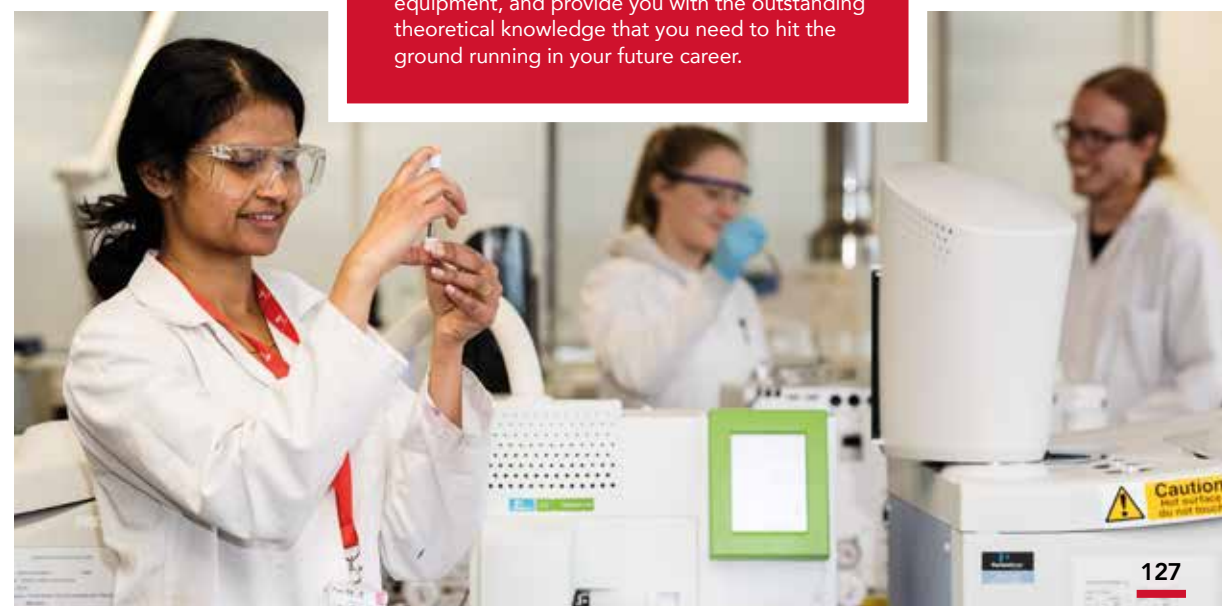
SCIENCES



SCIENCES

Do you want to lead change from the front as a researcher or active problem-solver? Our science-focused courses are perfect for the inquisitive and innovative mind and are sure to launch prosperous and fulfilling careers after graduation.

Whether you want to study the human mind, human behaviour or human performance, or you're interested in taking on the world of climate change, or the environment and its management or forensic applications we have the course for you. All our courses are taught with experienced and talented professionals, that can connect you to the latest in scientific advances, train you to understand and operate technical equipment, and provide you with the outstanding theoretical knowledge that you need to hit the ground running in your future career.



Our Sciences provision covers a whole range of different specialisms.

**Psychology • Forensic • Paramedic
• Biomedical • Biological •
Counselling • Child Development
• Sport Science • Pre-Med •
Climate Change and Society
• Criminological Psychology •
Pharmacology • Genomics •
Ecology • Infection and Immunity**

"FOR ME, THE LARGE RANGE OF MODULES AND PATHWAYS AVAILABLE IS ONE OF THE BEST ASPECTS OF BIOLOGICAL SCIENCE. IT ALLOWS YOU TO CREATE A DEGREE TAILORED TO YOUR SPECIFIC SCIENTIFIC INTERESTS, OR TO EXPLORE NEW FIELDS THAT YOU MAY NOT HAVE PREVIOUSLY CONSIDERED."



BECKY SNOW

BSc (Hons) BIOLOGICAL SCIENCE

CONNECT WITH
OUR STUDENTS



FACILITIES

SCIENCE CENTRE

Our £30m Science Centre is a hive of exploration, discovery and eureka moments. It contains specialist labs that delve into the areas of psychology, biomedicine, forensics, biomechanics, sports therapy, ballistics, body fluids, biology and more.

ANALYTICAL CENTRE

Our Analytical Centre includes a wealth of analytical kit that enables detailed analysis and understanding of compounds and metabolites of interest in the function and dysfunction of organisms, forensic detection and design, development and use of drugs for therapy.

HUMAN PHYSIOLOGY SUITE

This facility gives us the ability to measure the effects of different procedures on human physiological parameters using state-of-the-art equipment including extensive tools linked to body composition and strength and conditioning.

OBSERVATION AND COGNITIVE SUITE

The observation laboratory is set up with digital video cameras and microphones and is used to carry out research on focus groups, interviews, behavioural observations and presentations. The cognitive suite of laboratories is a purpose-built set of five individual testing rooms linked to a central control room and houses two eye-trackers.

NATURE RESERVE

Our Stoke-on-Trent campus is home to a dedicated Natural Heritage Nature Reserve of some 10 hectares, an area of richly diverse habitats including reed marsh, deciduous woodland and secluded pools used for teaching and research.



CONNECTIONS

Our science courses are well-connected and hold appropriate accreditations for example the Royal Society of Biology, the Chartered Society of Forensic Sciences, Institute of Biomedical Science and the British Psychological Society.

All our students are guaranteed work experience opportunities, and in the past have worked at places like Cobra Biologics and Pharmaceutical Services, NHS Hospitals, and the Royal Air Force, helping to forge connections and gain experience for their future careers – plus, make a difference along the way.



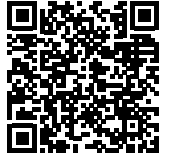
CAREERS

Whatever science you're passionate about, we have the course that can take you there. Plus, selected courses in the sciences area also offer optional pathways so you can specialise in the areas you're most passionate about.

Our graduates have found success using their expertise in varied roles like microbiologists, biomedical scientists, toxicologists, psychological counsellors, clinical psychologists, forensic scientists, sports coaches, teachers, researchers, and much more!



CONNECT
WITH OUR
EXPERTS



**" WITH PURPOSE BUILT FACILITIES,
AWARD WINNING TECHNICIANS
AND SUPPORTIVE AND FRIENDLY
ACADEMICS WHO ARE EXPERTS
IN THEIR FIELDS, PSYCHOLOGY
STUDENTS AT STAFFORDSHIRE WILL
HAVE EVERYTHING THEY NEED TO
SUCCEED IN THEIR FUTURE CAREER."**



**DR EMILY
BUCKLEY**

HEAD OF DEPARTMENT
(PSYCHOLOGY)

MEET THE EXPERTS



**IAN
DAVIES**

SENIOR LECTURER
(BIOMEDICAL SCIENCE)



**DR SARAH
ROSE**

SENIOR LECTURER
(PSYCHOLOGY)



**DR JACKY
FORSYTH**

ASSOCIATE
PROFESSOR (SPORT
AND EXERCISE)



**DR DUNCAN
PARKER**

COURSE DIRECTOR
(FORENSIC SCIENCE)



View our
courses online



SOCIETY, PLACE AND PEOPLE



SOCIETY, PLACE AND PEOPLE

Are you interested in the world around you, the way people think, or the actions of individuals within and as a part of society?

At Staffordshire University, we have a variety of courses dedicated to society, place and people that are ideal if you want to start a career in social work, politics, psychological counselling, business management, environmental management, or criminal justice. As an institution, we have the expertise, facilities and work experience opportunities that can launch your future, developing your interest in society, place and people into a career where you can make a change to the communities you surround yourself with.



Our Society, Place and People area has a huge range of courses to give you the best chance of succeeding in your future career.

Social Work • Psychology • Health and Social Care • Early Childhood Studies • Criminology • International Relations • Security and Intelligence • Sustainability • Ecology and Environment • Climate Change • Working with Children, Young People and Families • Action on Hardship and Poverty • Policing

"USING DIFFERENT TECHNIQUES LIKE EYE TRACKING, SKIN GALVANISATIONS, EEGS AND OTHER PHYSICAL TESTS, WE CAN BACK UP OUR PRACTICAL, AS WELL AS THEORETICAL KNOWLEDGE OF PSYCHOLOGY - WHICH IS REALLY EXCITING."



**JO
TURNER**

BSc (Hons) PSYCHOLOGY

CONNECT WITH
OUR STUDENTS



FACILITIES

CRIME SCENE HOUSE

We have a dedicated Crime Scene House fitted with CCTV and two-way audio which gives the option for both internal and external crime scenes, so you can hone your investigative and crime scene examination skills.

MOCK COURTROOMS

Put legal theory into practice in our purpose-built and digitally-equipped mock courtrooms. Here you can experience the pressures of the court environment, whether that is giving evidence in a court of law or presenting your argument at Model NATO.

COUNSELLING SUITES

Our Counselling Suites are dedicated rooms perfect for practising your counselling skills or conducting interviews with research participants. The counselling sessions can be recorded and opened up for a wider audience to view.

COMMUNITY HOUSE

Our fully furnished house is used for simulated, scenario-based training. Community House includes audio and video facilities to record simulated exercises and allow detailed tutor and peer feedback.

OBSERVATION AND COGNITIVE SUITE

The observation laboratory is a large room setup with digital video cameras and microphones and is used to carry out research on focus groups, interviews, behavioural observations and presentations. The cognitive suite of laboratories is a purpose-built set of five individual testing rooms linked to a central control room and houses two eye-trackers.

NATURE RESERVE

Our Stoke-on-Trent campus is home to a dedicated Natural Heritage Nature Reserve of some 10 hectares, an area of richly diverse habitats including reed marsh, deciduous woodland and secluded pools used for teaching and research.



CONNECTIONS

All our society, people and place related courses are connected to industry in some way, whether it's through outstanding work placements, professionally active academics, or specially designed modules.

At Staffordshire University, we hold partnerships and connections with public organisations and private businesses that can help you take your degree to the next level, including a long-standing partnership with the West Midlands Regional Police Forces, prisons and multiple hospital and trusts within the NHS.

CAREERS

Our community focussed courses are designed to launch your future career in multiple fields. So, whether you have your sights firmly set on becoming a social worker, or you want to explore different opportunities related to the fields of criminology, politics, psychology, ecology and environmental management and health and social care, we can help you get there.

Our graduates have dived straight into careers with focuses on community rehabilitation, civil service, or analyst roles in the fields of security and data. Our courses are a perfect base to undertake postgraduate education too, specialising in areas related to social work or the education sector.



CONNECT
WITH OUR
EXPERTS



"STAFFORDSHIRE UNIVERSITY IS A GREAT PLACE TO STUDY CRIMINOLOGY – WE COMBINE OUR UNDERGRADUATE DEGREE COURSE WITH TEACHING ON OFFENDER MANAGEMENT AND WORKING WITH VICTIMS."



**SARAH
PAGE**

SENIOR LECTURER IN SOCIOLOGY
AND CRIMINOLOGY

MEET THE EXPERTS



**DR JO
TURNER**

COURSE LEADER
(CRIMINOLOGY)



**CAROLYN
GAIR**

COURSE DIRECTOR
(SOCIAL WORK AND
WELFARE)



**DR TONY
CRAIG**

ASSOCIATE
PROFESSOR
(MODERN HISTORY)



**DR DAVE
SKINGSLEY**

COURSE LEADER
(BIOLOGICAL
SCIENCE)



View our
courses online



SPORT AND EXERCISE

138



SPORT AND EXERCISE

Turn your passion for sport and exercise into a career with a course from Staffordshire University. There's a variety of avenues to choose from that offer great careers in the industry, from studying the science and psychology of competitors, to the more practical therapy and coaching sides, which offer experience in the field.

Our sports and exercise degrees are taught by professional academics with experience in the careers you're making strides to enter. Plus, all our courses come with guaranteed work placements and are taught in outstanding facilities that mirror training and development centres across the country – meaning when you graduate, you'll be in the best position to secure a job in your chosen field.



139

Our Sport and Exercise area offers courses and pathways designed to connect you with industry.

**Sport and Exercise • Science
• Sports Therapy • Physical
Education • Youth Sport
Coaching • Sport Psychology •
Coaching • Football Coaching
• Performance • Athletes •
Strength and Conditioning**

**"THE BEST PART OF STUDYING
SPORTS SCIENCE AT
STAFFORDSHIRE UNIVERSITY
WAS GAINING HANDS-ON
EXPERIENCE."**



**MEGAN
GOODFELLOW**

BSc (Hons) SPORT AND
EXERCISE SCIENCE

CONNECT WITH
OUR STUDENTS



FACILITIES

SPORTS PSYCHOLOGY LAB

The Basil Ashford Sports Psychology Laboratory and Consulting Room are used extensively for teaching, research and consultancy in the areas of sports psychology, exercise psychology and motor learning.

SPECIALIST SPORTS LABS

We have specialist laboratories in biomechanics, strength and conditioning, sports therapy, sports psychology, sport and exercise physiology and IT labs with specialist software such as Dartfish and Tacklesport.

SPORTS THERAPY CLINIC

Our BSc (Hons) Sports Therapy students work under the supervision of The Society of Sports Therapists accredited staff, to practice delivery of injury assessment, rehabilitation and sports massage in our Sports Therapy Clinic. This involves the use of specialist ultrasound, electrotherapy and cryotherapy machines.

BIOMECHANICS FACILITIES

The Gait Analysis Laboratory within the Biomechanics Facility consists of motion capture and associated software, force platforms, digital video camera and associated kinematic analysis software and plantar pressure measurement system. Our facilities allow for teaching, learning support and research.

SIR STANLEY MATTHEWS SPORTS CENTRE

Full of kit powered by MATRIX Fitness, our Sports Centre houses our sports hall and gym and combines technical equipment for areas such as strength and conditioning, cardiovascular and resistance training, with outside learning environments such as our 3G pitches and Astroturf. Perfect for learning, training and recreation!



CONNECTIONS

The sport and exercise degrees at Staffordshire University are designed to connect you with industry. We have active links and partnerships with sporting organisations both in the local area and further afield with the likes of Championship football team Stoke City F.C.

Combining our connections with guaranteed work experience opportunities and a hard work ethic, you have the chance to begin your journey to a career in the sport and exercise industry.

CAREERS

During your course, you will have the opportunity to gain professional qualifications to boost your career prospects, as well as working closely with industry partners to hone your skills and enhance your employability.

Many of our courses are also accredited by industry regulatory bodies like the Society of Sports Therapists, The British Association of Sports and Exercise Sciences and The British Psychological Society. This means you will be set up, like many of our graduates, to work in sectors like sports development, coaching, teaching, sports facility management, and more!



CONNECT
WITH OUR
EXPERTS



"WE PROVIDE PRACTICAL, HANDS-ON EXPERIENCE THROUGHOUT OUR FANTASTIC COURSES, WHICH ALLOWS FOR A SMOOTH AND SUCCESSFUL TRANSITION INTO EMPLOYABILITY."



**KARLA
DREW**

SPORT AND EXERCISE

MEET THE EXPERTS



**ASHLEY
GILL**

COURSE DIRECTOR
(SPORTS COACHING)



**DR JACKY
FORSYTH**

ASSOCIATE
PROFESSOR (SPORT
AND EXERCISE)



**JAMES
CAPPER**

HEAD OF
DEPARTMENT (SPORT
AND EXERCISE)



**REBECCA
WARNETT**

COURSE LEADER
(SPORTS THERAPY)

NOTES

OUR OPEN DAYS

Do you want to be the change? Visit us at one of our Open Days in Stoke-on-Trent, Stafford or London and meet expert academics, tour our facilities, and explore the place that could be your future home.

STOKE OPEN DAYS

Stoke-on-Trent city campus

SATURDAY 12 JUNE 2021

SATURDAY 14 AUGUST 2021

TBC SEPTEMBER 2021

SUNDAY 24 OCTOBER 2021

SATURDAY 4 DECEMBER 2021

STAFFORD OPEN DAYS

Centre for Health Innovation
Dedicated healthcare Open Days

SATURDAY 19 JUNE 2021

SATURDAY 2 OCTOBER 2021

SUNDAY 7 NOVEMBER 2021

SATURDAY 27 NOVEMBER 2021

To book a place on an Open Day, visit:

www.staffs.ac.uk/opendays

LONDON OPEN DAYS

Staffordshire University London - Digital Institute

WEDNESDAY 21 APRIL 2021

WEDNESDAY 9 JUNE 2021

SATURDAY 4 SEPTEMBER 2021

SATURDAY 30 OCTOBER 2021

WEDNESDAY 17 NOVEMBER 2021

WEDNESDAY 8 DECEMBER 2021

See all Open Events and book a place online:

dilondon.staffs.ac.uk/event

Open Day dates and programmes are subject to change, please visit our websites for booking and date confirmation.



TOP 15 FOR SOCIAL INCLUSION

The Times and The Sunday Times
Good University Guide 2021

TOP 15 FOR TEACHING QUALITY

The Times and The Sunday Times
Good University Guide 2021

SHORTLISTED FOR UNIVERSITY OF THE YEAR

Times Higher Education Awards 2020

For more detailed information on courses
or studying at Staffordshire University visit:
www.staffs.ac.uk/undergraduate

Find us on: www.staffs.ac.uk/socialmedia



WORKING IN PARTNERSHIP WITH

ADARE

Supporting woodland
creation in the UK through
carbon compensation

**FOREST
CARBON**