



BE THE CHANGE

CONNECT WITH A CAREER TO CHANGE THE WORLD

UNDERGRADUATE PROSPECTUS 2023

CONTENTS

3	Your Invitation	40	Student Support
4	An Award-Winning Institution	42	The Careers of Tomorrow
6	Your Journey Of Change	44	Sport at Staffs
8	Our Unique Learning Experience	46	High Performance Academy
10	Connect With Us	48	Teaching With A Difference
12	The Home of Education	50	Making a Change Through Research
14	Enter the Digital University	54	Higher and Degree Apprenticeships
16	A Catalyst For Your Future	58	Application Journey
18	The World Is Waiting	60	5 Ways To Join Us
20	Our Centre for Health Innovation	62	Entry Requirements
24	Staffordshire University London	64	UCAS Points and What They Mean
28	Living at University (Accommodation)	66	Fees and Finance
32	The Students' Union	68	What Can I Study?
36	Life in Staffordshire	151	Our Open Days

CONNECT WITH US DIGITALLY



Throughout the prospectus you'll find windows that contain unique QR codes. Scan these codes with the QR reader on your device camera and connect with the most up-to-date areas on our website. Plus, webpages and video playlists are detailed by these icons within the windows, so you can choose which type of content to immerse yourself in.



The contents of this guide are correct at the time of going to press. However, please check our website www.staffs.ac.uk before making an application in case there are any changes to the subject area or course you are interested in, or to the other facilities and services described here. Where there is a difference between the content of this guide and our website, the content of the website take precedence and represent the basis on which we intend to deliver our services to you.



Professor Martin Jones,
Vice-Chancellor and
Chief Executive

YOUR INVITATION

FROM PROFESSOR MARTIN JONES,
VICE-CHANCELLOR AND CHIEF EXECUTIVE

It is my pleasure to invite you to join us for the next stage of your education journey, in what promises to be one of the most exciting times to gain new skills to make a positive change in a rapidly evolving world.

At Staffordshire University, we are focused on the future of industry, on sustainable living, and creating new and innovative products that will become the backbone of emerging sectors. But that doesn't mean that we aren't connected to our history and heritage - and what a heritage it is! For more than 100 years we have offered higher education from our main campus in the centre of the creative city of Stoke-on-Trent, and each year we have developed our portfolio to stay ahead of industry, whether it is ceramics and computing, healthcare and engineering, or games and fashion.

Changing industries demand innovative learning, and as a future student of Staffordshire University, you will be among the first to take advantage of our brand-new buildings and facilities. In the last two years alone, we have worked to develop our ground-breaking, digitally-enabled Catalyst building at our Stoke-on-Trent campus, our Centre for Health Innovation facility in Stafford which brings to life sector-leading clinical simulation and immersion suites, and our London Digital Institute has been extended with more than £3.5m of new equipment, teaching areas and social space.

It is our mission to become the UK's foremost digital university, and as a result we can offer you a fully cloud connected campus, and chances to gain digital skills and certifications alongside your degree. We are dedicated to embedding virtual learning opportunities into every degree we offer.

At Staffordshire University we pride ourselves on more than our outstanding facilities; we are beacons for our local communities, with a huge network of business links in the regions that we call home. As a future student of our award-winning institution, these networks are yours too - giving you the chance to build your industry connections and charge into your future careers as an experienced professional, as well as a graduate of Staffordshire University.

In this prospectus you will find out more about our institution, and some of the reasons why we are among the top 15 in the UK for social inclusion and teaching quality (The Times and The Sunday Times Good University Guide 2021) and student satisfaction (Complete University Guide 2022). You'll also find a broad range of information about our student experience, support on the more intricate areas of higher education, and a look at our Study Areas and subjects of expertise.

Don't just take our word for it - visit one of our Open Days on campus, meet our academics and students in person, and take a tour of the places that could be the catalyst in your future career.

Be more than just a student, Be the Change with Staffordshire University.

AN AWARD- WINNING INSTITUTION



UNIVERSITY OF THE YEAR

Edufuturist Awards 2021

TOP 15 FOR TEACHING QUALITY

StudentCrowd University Awards 2021

TOP 15 FOR STUDENT SATISFACTION

Complete University Guide 2022

TOP 20 FOR JOB PROSPECTS

StudentCrowd University Awards 2021

6TH FOR SOCIAL INCLUSION

The Times and The Sunday Times Good
University Guide 2021



QS stars 2021



WHAT DO OUR ACCOLADES MEAN

Staffordshire University is an award-winning institution, and we are proud to share our accolades with our current and prospective students. Our accolades are from various credible and respectable sources.

EDUFUTURIST AWARDS

The Edufuturist Awards are an annual award ceremony, recognising educators in the UK and beyond, celebrating innovation, digital vision and how this is applied in an educational setting.

STUDENTCROWD UNIVERSITY AWARDS

The coveted StudentCrowd University awards recognise the top efforts in teaching and student support, helping students make the most informed decisions about their university journey. These awards are based 100% on student review scores.

THE COMPLETE UNIVERSITY GUIDE

The Complete University Guide works closely with UK universities, Higher Education organisations including UCAS, HESA and Jisc, and the media to create extensive tables covering aspects of education, satisfaction and quality.

THE TIMES AND THE SUNDAY TIMES GOOD UNIVERSITY GUIDE

One of the most recognised set of rankings in the UK, the Good University Guide analyses student opinion and their wider university experiences, combined with the outcomes of the 2014 research assessments, graduate job prospects and course entry standards.

QS STAR RATINGS

QS Stars is a rating system that help students select the right university based on their interests, identifying which universities rate highest in the specific topics, like facilities, graduate employability, social responsibility, inclusiveness, and more.



Discover what
makes us an
award-winning
institution





YOUR JOURNEY OF CHANGE

You've proved you're capable of anything – now it's time to get yourself ready to shout it on the world stage. At Staffordshire University, we want to join you on the next step of your education journey, at one of the most exciting times to be embarking on a university experience.

We will be here by your side to take the world by storm, whether you're looking to change yourself or the industries of the future.

YOU'VE GOT THIS – AND WE'VE GOT YOU.

CHANGE YOURSELF

You're perfect just the way you are – but whatever and wherever you study, your university experience will leave its mark on you. At Staffordshire University, we are here to support you through your journey, and make the experience as positive and enriching as possible, and that's why we offer all students a unique combination of on-campus learning and digital development opportunities, as well as giving you access to unique social facilities, clubs, societies and chances to make your mark throughout the UK and overseas with our outstanding partnerships.

CHANGE THE WORLD

We look beyond the UK to the wider world, and the impact you can make both as a student, and a graduate of our University. We are focused on maintaining the world we live in, and creating a better future for the industries and generations of tomorrow. As a result, our portfolio of courses are backed by expert research groups and centres that set an example for your future, by changing the world bit by bit.

CHANGE THE FUTURE

Whatever you want to study and whatever you want to be, with us you will look beyond today and focus on making a change to the future. Whether it be renewable energies, creating masterpieces, or scientific research, you have the might of Staffordshire University behind you every step of the way. All our courses guarantee you the opportunity to go out and make a difference, while you're still studying, on relevant and focused work placements.



Immerse yourself
in our journey of
change





Find out more about
our unique learning
experience



UNIQUE LEARNING EXPERIENCE

At Staffordshire University, we're offering you a unique learning experience that you'll find nowhere else, connecting you with innovation and professional opportunities that will give you the global vision to become the changemakers of tomorrow's industries.



INNOVATIVE

Innovation is what we do. We adapt and grow with 21st century industries to offer you the best opportunities to corner new and future-proofed markets when you graduate.

Digital Development

At Staffordshire University, we see the advantages that adding more virtual experiences brings to our degrees. As a Staffordshire University student, you'll get access to development that will improve the digital skills that are critical to success in 21st Century industries.

Unique teaching methods

We evolve our teaching and learning methods. We now offer modular learning and pathways on selected courses to allow students to tailor their degrees to their career aspirations.



PROFESSIONAL

With us, you'll get the opportunity to graduate with a professional profile based on our values, competences and attitudes, as well as the tools you need to showcase your developed skillset to future employers.

Guaranteed Work Experience

Work experience opportunities are essential to being able to hit the ground running in your future career. That's why we offer the opportunity of placement no matter what you're studying, and use our connections to secure your future with big hitters in business around the world.

Careers Services

Our Careers Studio team will help you to secure part-time work while studying, find placements during courses or help set you in the right direction to fulfil your career ambitions when you graduate.



GLOBAL VISION

With us, you'll be able to explore the world without ever leaving our campus. We have students from all over the world, and our physical, as well as digital reach, is extending every day.

A worldwide institution

We are celebrated as the top 6 in the UK for social inclusion by the Times and The Sunday Times Good University Guide 2022, a testament to our teaching and learning, and the diverse range of opportunities available to you as a student.

Digital development

All our courses have digital development and virtual learning opportunities embedded in them. Whether this is access to professional qualifications that complement your studies or chances to study remotely, we aim to prepare you for 21st century working.



CHANGE-MAKERS

As a part of the Staffordshire University community, you will stand out from the crowd and get the platform you need to go out into the world and make a difference in your future career, or in a research environment.

Research with impact

We don't just want to inspire you to make a change in the world... we make sure we lead by example. We are continuing to make waves in microplastic research and much more, as well as running our research centres in areas like archaeology and in psychological research.

Successful Alumni

Our Alumni are all over the world in ground-breaking industries, making positive and influential changes in business, and giving us a huge international and high-level network of brilliant and friendly connections. Join them and prove the success of our unique learning experience.



See our unique learning experience
in action





Learn more and
book an Open Day
to suit you



CONNECT WITH US

At Staffordshire University, there are a variety of different ways to connect with us and begin your journey into higher education. As well as arranging Open Days throughout the year for you to visit, our website is also packed with information on the Staffordshire Experience, our courses and facilities, and other great events open to the public, and you as a future student of our award-winning institution.

Find out more at staffs.ac.uk/visit

CHECK OUT OUR OPEN DAYS

Our on-campus Open Days are the traditional events that are hosted at each campus on numerous dates throughout the year. They're brilliant and friendly experiences, where you will be welcomed by our students and staff, and explore our campus with the help of our guides. You'll also get the chance to check out our subject talks, hosted by the academics themselves, and we also have accommodation tours with our students so you can check out your future homes and find out the best places to relax if you're staying on campus.

Stoke-on-Trent, Stafford, and London all have great things to offer too, so be sure to ask around to find out about some of the best and closest places to unwind after your long day! For more information on our on-campus Open Days, including dates and booking details, please visit: www.staffs.ac.uk/openday

TOUR OUR CAMPUS IN 360°

If you can't wait for an Open Day, you can't quite make our scheduled dates, or if you want to refresh your memory of our campuses in the run up to your higher education experience, we have just the thing for you! Recently, we launched a 360-degree Virtual Campus Tour, that puts you right into the heart of our institution at the click of a button. Using the latest camera technology, we have captured some of the most important facilities and locations at our campuses, along with supporting video content that will give you a detailed insight into your future at the University.

Our 360-degree Virtual Tours are often updated with new locations and facilities. Check out the latest tours at virtualltour.staffs.ac.uk



Get a taster of what to
expect at an Open Day





Take a virtual tour of our
next-level facilities



THE HOME OF EDUCATION

At Staffordshire University, you will get more than just a degree. We are constantly investing in our campuses so that you can not only become the expert in theory, you can have the practical knowledge you need to become an asset in 21st Century industries.

At our main campus in Stoke-on-Trent, you'll find over £100m of professional-standard facilities to start developing skillsets around your career. What's more, we have business programmes and facilities that are so advanced, they're often utilised by the emerging industries themselves, creating opportunities for connections and an enhanced working-village atmosphere around campus.

"Our eco-system brings together the businesses, the technology, research and academic expertise in an environment that allows ideas to flourish and innovation to grow."

Professor Martin Jones
Vice-Chancellor and Chief Executive



THE SCIENCE CENTRE

Develop your scientific and analytical expertise in our £30m building dedicated to scientific innovation, packed with professional laboratories.



STUDENT CONNECT

Get year-round student support with over £1m of services dedicated to your development.



CRIME SCENE HOUSE

Hone your investigative techniques with a fully-equipped forensic simulation facility.



CADMAN STUDIOS

Produce, broadcast, and develop in our £11m studios, that house the latest audio and visual technology.



THE SMART ZONE

Explore your inner designer-maker with dedicated workshop space and the latest in digital technology and high-end engineering facilities.



INNOVATION ENTERPRISE ZONE

Connect to career opportunities and temporary work with partner businesses on-campus.



THE BEACON BUILDING

Study in our £5.5m teaching facility, or grab a bite to eat in the built-in bistro.



ESPORTS HUB

Build and manage tournaments with professional level hardware, software and broadcasting setups.



MOCK COURTROOMS

Put legal theory into practice in our purpose-built mock courtrooms.



Explore an extensive collection of our facilities





Find out more about
our commitment to
providing the Education
of the Future



ENTER THE DIGITAL UNIVERSITY



F1RST UK UNIVERSITY

TO LAUNCH A COMPUTING DEGREE
IN THE 1960S

TO MOVE TO THE CLOUD FOR ALL
IT SYSTEMS

TO INTRODUCE AN AI POWERED
DIGITAL ASSISTANT FOR STUDENTS

TO INTRODUCE ROBOTIC PROCESS
AUTOMATION TO AUTOMATE
ADMINISTRATIVE TASKS THAT
SUPPORT STUDENTS



Take a look at our
digital university
in action



Digital technologies are becoming more important than ever in education and industry alike. At Staffordshire University, we have stood side-by-side with digital integration from day one, offering computing degrees ahead of the curve over 50 years ago, and staying ahead of the trend in areas like AI and robotics, gaming and cyber security.

The world is evolving further, and we know that whatever you study, and wherever you are, digital development and virtual skills are critical to your future employability and life experience. With that in mind, we have been developing more virtual experiences to bring to all our traditional, full-time degrees. It's all part of our totally fresh approach to teaching that puts you, the student, at the centre of your studies, allowing you

to connect with your lecturers, friends and studies in whichever way you choose, and preparing you for the metaverse of tomorrow.

We are more than just a university, we are a metaversity. By adding virtual learning and digital development opportunities to our full-time courses, we are offering you the ability to manage your own productivity and engage with work and study in both virtual and physical worlds, giving you the skills you need to transition seamlessly between the two in your future career. Our goal is simple: to make teaching and learning more inspiring and rewarding, and to offer you a unique combination of digital and physical environments like never before.

LEVEL UP YOUR RESOURCES

Take advantage of free cloud-based software like the Microsoft Office suite.

GROW DIGITALLY

Use our SkillSite platform to gain external certifications and build a professional profile.

CONNECT WITH LEARNING

Connect your smart devices with video presentations, lesson tasters and tutorials well ahead of lectures.

ENTER THE VIRTUAL HUB

Sign into our Blackboard Virtual Learning Environment to access critical course resources and communication.

STORE IT IN THE CLOUD

Access unlimited cloud-based storage through Microsoft OneDrive to back-up your priceless course materials.

INTERACT WITH AI

As a Staffordshire University student, you will have exclusive access to the UK's first Higher Education digital assistant to guide you through your university experience.

COLLABORATE VIRTUALLY

A workspace for real-time collaboration and communication, meetings, file and app sharing in Blackboard Collaborate and Microsoft Teams.



Find out more about
The Catalyst



A CATALYST FOR YOUR FUTURE

As a future Staffordshire University student, we're inviting you to be part of the biggest leap in our campus transformation ever, as we introduce our brand-new Catalyst Building.

Having opened in early 2022, the Catalyst building will be at the heart of your Staffordshire University experience, combining new technologies with dynamic learning spaces to launch the careers of a whole new generation of businesspeople, apprentices, and professionals.

A BEACON OF SUSTAINABILITY

The Catalyst building incorporates several energy efficient technologies to reduce the environmental impacts of the building whilst in use, including solar photovoltaic cells, LED lighting, and smart building technology.

WE ARE YOUR CATALYST FOR CHANGE

The £40m building spans 8,950 square metres, and over three floors you'll be able to access innovative areas like the Creativity Zone, Learning Lab and Learning Market. The Catalyst is packed with digital learning technologies, impressive architecture and large social areas, not to mention our expert academics who will be guiding you through your journey.

The Catalyst provides a platform for you to make a difference through your career, and make the connections that could prove invaluable when you graduate. What's more, we are inviting industry into the Catalyst, as well as giving you access to outbound and inbound digital conferencing facilities that will provide



you with the unique opportunity to build networks with employers and industry professionals around the globe as part of your studies.

With the Catalyst, you have the chance to take advantage of our constant commitment to innovation, and we can't wait for you to be among the first students to experience it.

WHY 'CATALYST'?

The definition of a catalyst is 'an event, person or object that causes great change'. At Staffordshire University we believe that our institution, teaching, and academics can be the catalyst that changes your career path, and ultimately, your life.



Explore
The
Catalyst





Find out more about our
global opportunities



Find out more about
Bethany's story



THE WORLD IS WAITING

As a Staffordshire University student, you have a chance to study and work abroad during your time studying with us.

Participating in a study or work-experience abroad will support you in gaining new skills, developing transversal skills and enhancing your employability. You will be able to make new friends and enhance your inter-cultural awareness.

In the past, our students have travelled to many places across the world using our global professional networks, from the cosmopolitan cities of Spain, to the bustling streets of Vietnam.

Study and work-experience abroad is a great way to enrich your studies, improve your employability, and it gives you a stepping stone to travel to parts of the world you may never have considered visiting before. Whatever course you're studying, the world is yours to experience and our dedicated Global Connections team will help you take advantage of this fantastic opportunity during your time with us.

**TURING
SCHEME**

Funded by the UK's global
programme to study and work abroad

"MY EXPERIENCE WAS PROBABLY THE BEST TIME OF MY LIFE."



**BETHANY
WEBB**

**ACTING AND SCREEN
PERFORMANCE**

"My experience was probably the best time of my life. The way we were taught in Budapest was very different. I studied so many things that I didn't study here, so I looked at different topics in acting as well as stuff for theatre that we don't really tend to look at, because when you're abroad they have different methods of study – so, it's really interesting seeing different ways they do that. There were 13 of us in the Erasmus group and there were about 11 different countries, so we got to know each other really well."



Explore our
Centre for Health
Innovation online



OUR CENTRE FOR HEALTH INNOVATION



Our Centre for Health Innovation is dedicated to training the healthcare professionals of the future, and is largely based in the heart of the historical county town of Stafford.

If a future as a nurse, paramedic, midwife or operating department practitioner (ODP) appeals to you, you don't need to look any further for your training than our Centre for Health Innovation.

In 2021, the centre benefited from an extensive multi-million-pound investment through the Stoke-on-Trent and Staffordshire Local Enterprise Partnership Getting Building Fund. This has provided brand-new training facilities for the health professionals of tomorrow.

We offer sector-leading clinical simulation and immersion suites that will enable you, as a student of healthcare, to explore and develop new patient safety techniques. Not only that, over recent years we've created new social spaces, a comprehensive healthcare library and facilities that mirror the real world through industry-focused learning.

These include our Clinical Simulation Suites and debriefing facilities, a simulated operating theatre and SimMan® mannequins – life-like robots that can be programmed with a range of medical conditions – one of which even delivers a baby! There's also a fully equipped ambulance and skills labs for hands-on learning in a supportive and safe environment.

OUR CENTRE FOR HEALTH INNOVATION



REAL LIFE CLINICAL PLACEMENTS

Our highly skilled and supportive tutors have extensive experience of working in clinical practice, with many of them at the forefront of their profession. They're committed to academic excellence and understand how the healthcare professions require the highest standards of training. That's why around 50% of your time will be spent in real life placements – to help you put what you've learnt in the classroom into safe and supported practice. We really do offer more in every way, including numerous initiatives that could make your fees go further, from high quality and varied placements and

your DBS checks, to providing a uniform, and a funded social schedule designed to fit around placements and studies. Throughout your time with us, you'll benefit from a personal tutor and, while on placement, you'll be supported by a placement colleague.

ACCOMMODATION

For the September 2022/2023 academic year and beyond, we are delighted to offer designated university managed accommodation for Stafford students studying at the Centre of Excellence for Healthcare Education on our Leek Road site in Stoke-on-Trent. Healthcare students will be housed together as a cohort in the Leek Road Houses and have access to all university and SU buildings including the paramedic training house.

Our Stoke campus is located a stone's throw away from Stoke-on-Trent Railway Station with a shuttle bus facility available directly from Stafford Railway Station to the Centre of Excellence for Healthcare Education.



Discover your
future healthcare
experience



"STAFFORDSHIRE UNIVERSITY HAS HELPED WITH MY CONFIDENCE TO GET INVOLVED IN EMERGENCY SITUATIONS IN THE HOSPITAL SETTING"



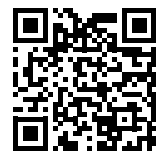
**CHARLOTTE
RIGG**

**NURSING
PRACTICE (ADULT)**

"I have found that taking part in the simulation days that have been arranged at Staffordshire University has helped with my confidence to get involved in emergency situations in the hospital setting. It's amazing how realistic the simulation dolls can be when they breathe, blink and talk which helps to make the experience more relatable to situations that students experience in practice. I feel that as a student and eventually as a newly qualified nurse, I will be able to go into any situation and carry out an A&E assessment, and treat what is seen thanks to the practice the simulation opportunities that have been provided."



Find out more about
Staffordshire University
London



STAFFORDSHIRE UNIVERSITY LONDON

Staffordshire University London has been making waves in the digital technology sector since 2018. Located in Queen Elizabeth Park in East London, the Digital Institute is committed to offering courses designed to corner the most lucrative and forward-thinking sectors in technology.

The expert academics at Staffordshire University London bring real-world experience to the institute who, combined with an advisory board and professional links with sector pioneers, ensure the courses are right at the forefront of industry demands, giving students the skills that make them hot commodities in the big city and beyond when they graduate.

The Digital Institute is right in the heart of the vibrant creative campus that is Here East, among cafés, bars, Europe's largest shopping district, and some of the biggest names in the business, such as Sports Interactive and BT Sport. Big city living is just one of the great things that Staffordshire University London has to offer. The location is part of a wider experience made up of bespoke courses, world-class facilities, and industry connections.



Watch videos
of our London
campus in action



The Digital Institute houses some of the best facilities that Staffordshire University has to offer, with a professional grade Esports Arena, a broadcasting control room, and dedicated networks and IT studios.

As our course offering continues to expand, we are excited to announce the £3.5 million expansion of our London campus - which brings more open plan spaces, digital facilities, and social areas to the institute.

We are dedicated to creating the next generation of learning, teaching, and working spaces for our staff, students, and visiting stakeholders. We wanted to build upon our existing award-winning estate with a focus on providing an atmosphere of collaboration and interactivity for all who study, work and visit.



OUR STUDY AREAS

At Staffordshire University London, we offer a range of courses to prepare you for an exciting future in some of the fastest growing industries in the world.

   
Design • Create • Promote • Protect

ARTIFICIAL INTELLIGENCE
COMPUTER SCIENCE
COMPUTER GAMES DESIGN
CONCEPT ART FOR GAMES AND FILM
CYBER SECURITY
DATA SCIENCE AND INFORMATICS
ESPORTS
FINANCIAL TECHNOLOGIES



DATA JUNCTION

The Data Junction is one of our new units and is designed to accelerate our commitment to digitally focused academic areas.

In addition to advanced wireless casting and presenting facilities, new teaching and learning technology will allow for synchronous delivery of different classes and activities.

DIGITAL LOFT

The Digital Loft is the same in size and scope as our existing campus, and is being created with a hybrid digital and natural world aesthetic.

Reload is the showpiece retro-gaming café with a wide variety of food and drink options, as well as being able to play retro video games whilst socialising.

PRODUCTION WAREHOUSE

The Production Warehouse is home to our Esports arena as well as a number of independent learning areas, providing the best industry approved facilities for students.

There are also plenty of spaces to relax and un-wind. The Den provides dynamic areas that contains soft seating and desk areas with various electrical points, as well as spots to relax between classes or to create informal meeting spaces for group work.

"I THINK STUDYING AT THE DIGITAL INSTITUTE WILL REALLY BENEFIT MY CAREER."



JAMIE WOOTON

ESPORTS

"When I found out about the facilities, I thought they were just second to none, they were just really a step above anything else that was on offer at any other university. I think studying at the Digital Institute will really benefit my career in the long run because I'm going to be developing so many skills as well as meeting so many different industry figures."



Watch Jamie's video





Find out more about
our accommodation



LIVING AT UNIVERSITY

A big part of the university experience for you might be living away from home for the first time. This is a great opportunity to forge new friendships, take on new responsibilities, and get the personal space you deserve.

Our University managed accommodation is a great way to start your university experience. No matter which halls you choose, you'll be right in the heart of campus, ready to take on your studies and embed yourself in the social scene from day one. Our halls offer a variety of living styles, amenities and scenic options to fit your needs, and you can explore them for yourself at one of our Open Days or our 360-degree Virtual Tour.

Find out more at staffs.ac.uk/visit

BE IN THE CENTRE

In the middle of the Stoke-on-Trent campus, a stones throw away from the social scene of the LRV and the beating heart of the Catalyst building are our Leek Road Halls. These rooms are contemporary, comfortable and community focused. With a large kitchen complete with modern appliances, a comfy social space and relaxing bedrooms, these halls are perfect for social butterflies.

The majority of our accommodation opens out onto gardens, fields or courtyards. These great outdoor spaces are equipped with seating and charging points so you can keep up to date with the latest social feeds while you relax.

THE SCENIC ROUTE

If it's nature and country living you're after, we have that too. Breathe in the relaxed vibe at our Clarice Cliff Court accommodation. Built around its own enclosed courtyard space and located on the doorstep of the Staffordshire University nature reserve, the halls offer bedrooms with en-suite bathrooms and shared kitchen facilities.

CANALSIDE LIVING

Do you want to be at one with the waterways? Find your home in our College Court halls, en-suite accommodation just a ten-minute walk from campus. College Court offers a friendly and relaxing atmosphere, with shared kitchen facilities and common rooms where you can enjoy movie nights, pizza nights and more.

LIVE IN A CLOSE-KNIT COMMUNITY

If you're looking for something more homely, Leek Road Houses are perfect for you. In our popular terrace house style houses, you'll have your own bedroom, a spacious open plan kitchen and living space to relax with your new housemates.



LIVING AT UNIVERSITY

LIVE OFF CAMPUS

If on-campus accommodation isn't for you, don't worry. There are a number of private housing and student housing options in the local area to take advantage of. So, you can live as close to, or as far away from the action as you want. It's a great way to get a head-start on budgeting for the future, and the living options are endless.

WE'RE WITH YOU

Going out in the world by yourself doesn't mean you have to be alone. We have a dedicated team to make sure you settle in and help you get started with university life. We have a team of Residence Life Assistants (RLAs), who are students themselves and have experience of living in the accommodation. The RLA's will help to ensure that everyone is happy, healthy and safe within our accommodation. Residence Life Assistants are the people to go to for help finding the best supermarkets in the area, the best places for a night out, or where to do your laundry. They are available seven days a week – even if you just want a cuppa and a chat.

We also have a team of Residence Life Coordinators, who are available to support you throughout the evenings during term time. They are experienced with dealing with lots of things that students may be feeling whether that is loneliness, low mood or an emergency crisis, and can be contacted through our Campus Security team.

On top of this, we have an events and activities programme for you to engage with that offers things like: cooking, arts and crafts, sports, cinema evenings, BBQ's, online gaming tournaments and open mic nights. There are lots of events that you can get involved with and the team want you to suggest other events they can do too.

SECURE LIVING

Our Campus Security (an on-site support team) are available 24/7 and there's even a friendly campus police officer who can give advice on personal safety. Once you've received a course offer, you can apply for a room in our accommodation.

SAFETY AT YOUR FINGERTIPS

At Staffordshire University, your safety is our priority – and that's why you will be connected 24/7 with the SafeZone app during your time here. This simple-to-use app will let you summon first-aid, security or safety assistance via your mobile phone or PC, so wherever you are, help is at the touch of a button.



Explore your new
home at Staffordshire
University





Find out more
about our
Students' Union



THE STUDENTS' UNION

The Students' Union is the go-to place for a variety of services at Staffordshire University. As soon as you join us, you'll become a member of a Union that represents your academic interests within our institution, as well as offering support, advice, volunteering and employment opportunities - and a vibrant social scene too!

The Students' Union gives you the opportunity to embed yourself into the Staffordshire University community fully.

WE MAKE A DIFFERENCE

The Students' Union is the voice of the Staffordshire University student community. We are a democratically led organisation, with four student officers elected each year to represent your interests. Once in post - our officers are supported by a range of student representatives, who guide our fantastic support mechanisms and other work to ensure the University hears your voice when making big decisions.

GET INVOLVED

Not all of your interests are going to be purely academic, right? Don't worry - the Students' Union facilitate over 100 student-led clubs and societies, and we want you to get involved. Chances are there are students on campus that share your interests, whether they be in niche areas of technology, exciting sports, or weird and wonderful creations - there's so much to choose from! You can also get involved in one-off activities locally and on-campus with our exciting 'Give it a Go' and volunteering programmes.





THE STUDENTS' UNION

ADVICE, SUPPORT AND CAMPAIGNS

Our friendly advice team are here to support you. The team are experts in academic advice, housing, and money management, and it's all accessible to you as a student. The advice team provide factual, confidential, and impartial advice to empower students to shape their own experience. Our Officer Team also reach out to students with events, ideas, and campaigns to help make the University experience a safer and more enjoyable one for our students.

GREENPAD

GreenPad is the Union lettings service that puts students in safe accommodation with approved landlords. We work with lots of different landlords to provide a range of properties to suit all budgets and requirements, and our team are always on hand to support any aspect of an application.

WORKING WHILE YOU STUDY

From CV building to supplementing your student loans, gaining work experience, and earning can always make a change while studying. Thankfully, there are many opportunities for you to earn while you learn, without taking time away from your studies.

BE PART OF YOUR STUDENTS' UNION STAFF TEAM

Play your part in making our community #ProudToBeStaffs by joining the team of friendly and enthusiastic Union Team Members who bring your Students' Union spaces, outlets, and activities to life. With opportunities in retail, hospitality, administration and content production, there will undoubtedly be a role that could suit you.

Opportunities to apply and be interviewed regularly arise each year so that you could enjoy the benefits of study-compatible employment, alongside a team of fellow students, right here on campus in Stoke-on-Trent.

For more information about employment opportunities within the Students' Union, please visit: www.staffsunion.com/jobs



Watch the
Students' Union
in action





Find out more about the
Staffordshire University
experience



STOKE-ON-TRENT

IN THE CITY

Our main campus is based in Stoke-on-Trent, a diverse and lively city packed full of places to explore, party, shop and dine. If you're looking to get your adrenaline fix, Stoke-on-Trent is home to Alton Towers and the UK's No.1 indoor tropical aqua park Waterworld. What's more, our campus is right next to a main line railway with direct links to London, Manchester and other major cities, perfect for a day out further afield! The best bit? We're one of the most affordable places to live and study in the UK!

ON THE TRAILS

If you're into hiking, breath-taking views and country pubs – we've got that covered too. Why not take a walk around the Trentham Estate and its fantastic selection of independent shops at its retail village? Or if adventure is more your thing, hop on a short bus ride and visit the Peak District, a national park famous for its rivers, valleys, and mountains.

STAFFORD

A TOWN WITH A DIFFERENCE

If you're studying at our Stafford campus, you're a short walk from the county town of Stafford. Packed with retail opportunities at every turn, Stafford boasts the Riverside, Guildhall and Waterfront shopping centres and a vibrant community of independent shops. If culinary delight is on the agenda, look no further, as Stafford also packs a huge range of popular and unique restaurants, bars, and cafés too!

HERITAGE AT HEART

With its very own castle, Stafford is a haven of heritage. It's quaint historic high street harbours an abundance of shops, restaurants, bistros and quaint coffee shops, as well as a great selection of bars. If you're looking for something off the beaten path, just a short bus ride away you can explore The Shugborough Estate - a beautiful National Trust house and gardens with plenty of events on all year round. For some sailing, scenery or cycling visit Chasewater Innovation Centre, a 90 hectare reservoir and plenty of green open space to get lost in nature.





Whether it's 'knit and natter' in Squeezebox, boardgames in the boardroom, quizzes and karaoke at Ember Lounge, fresh dining at Verve, or club nights at the LRV – you won't be struggling for something to do during your spare time. What's more, all our services and venues have the Best Bar None Gold Accreditation.

OUR VENUES

EMBER LOUNGE



If you're looking for a chill-out during your studies, then Ember Lounge is the place to be! You can relax with friends, have a cocktail and sample fantastic foods. To add to all of that, it's also home to our sell-out karaoke nights!

LEEK ROAD VENUE (LRV)



Home to two weekly club nights and lots of special events, we proudly work with our student groups to help them organise; Rock Nights, house music events, Poker Nights, and we even transform the space during the day for dance and sports practices, vintage fairs, and family-friendly days.

SQUEEZEBOX AND SQUEEZE IN VERVE



Is coffee your game? Squeeze and SqueezeBox are your campus caffeine stops!



If not, they offer a wide range of delicious smoothies, milkshakes, and hot and cold snacks. So, sit back, relax, and grab a coffee, smoothie, or anything from our vegan-friendly menu.



Explore our venues and what they have to offer





Find out more about
our Student Services



STUDENT SUPPORT

Our fantastic community means you're constantly connected to a great support network. Our staff and services care. Whether it's a concern about money, a query about your studies or a personal issue – we are here to support you. Our friendly Student Support and Wellbeing Team are always available to offer their time and support.

STUDENT CONNECT

It's important to us that you can get access to information, care and support on their terms. Student Connect is available to help any of our students that need advice and support, have a general query, or are looking for guidance on what services are available. A team to support you whatever your question.

BEACON

Beacon is your digital guide to student life - your one-stop shop for news, events, and updates, always on hand to support you through your studies.

Beacon provides personalised and responsive information on student timetables, enables contact with personal tutors, and provides the answers to over 1000 frequently asked questions, covering campus facilities, useful resources, and support services that will help you through University life.

Beacon can be downloaded from the iOS App Store, the Google Play Store, or by accessing it through your desktop: <https://beacon.staffs.ac.uk/>

STUDENT SUPPORT AND WELLBEING

The Student Support and Wellbeing Services comprise of four teams which are here to support with all aspects of student life. The teams that make up the Student Support and Wellbeing Services are:

- Student Support and Experience Team
- Student Inclusion Team
- Student Wellbeing and Safeguarding Team
- Multifaith Chaplaincy.

Our advisors, practitioners and chaplaincy team provide support to enable you to maximise your student experience from Welcome to Graduation. The service provides everything from information, advice and pastoral support to addressing students' additional needs, via DSA and providing wellbeing and mental health support. The Multifaith Chaplaincy provides support for spiritual needs for all faiths and no faiths, and provides quiet spaces for reflection and prayer. All of our delivery is via online Microsoft Teams, telephone, email and face to face delivery; which includes workshops, group work, 1-2-1 sessions, and activities and campaigns throughout the year. Please visit www.staffs.ac.uk/students/support/home where you will find information about the Student Support and Wellbeing support teams and much more.

SUPPORT AT THE STUDENTS' UNION

Our excellent Students' Union is also available for all kinds of support, from job opportunities on campus to a 'Money Doctor' advice service.

CARE LEAVERS AND ESTRANGED STUDENTS

Our dedicated staff are always available for students who are care experienced or estranged from their families. The team are in place to support students as they transition into and through their studies at Staffordshire University. They will provide a personalised service which includes year-round accommodation, targeted financial support, and personalised support from our student support workers. You can find out more at: www.staffs.ac.uk/care-leavers



Learn how
we can
support you



STAFFORDSHIRE UNIVERSITY WOODLANDS DAY NURSERY AND FOREST SCHOOL

Worried about childcare arrangements while you study? Welcome to the brand-new Woodlands Day Nursery and Forest School in the heart of our Stoke-on-Trent campus. Open 5-days a week for children aged 0-5 years, Woodlands brings the forest setting to our city campus and is not only connected with its landscaped and idyllic surroundings, it provides inspirational and flexible learning spaces that offer developing children digital experiences too. We understand just how critical it is that childcare evolves ahead of the times, so our team are committed to helping to build prerequisite skills to support future learning, as well as providing a fun and loving environment to nurture the little professionals of tomorrow!

Find out more about our Nursery and the prices for future students at:
staffs.ac.uk/about/facilities/nursery



Find out more about
our careers support



THE CAREERS OF TOMORROW

You have the drive to succeed, and we have the tools that will get you there. At Staffordshire University, we are committed to making sure that your degree is for more than just show – we want to give you the skills and experience to back your qualification up, and the knowledge to make an impact in the industries of tomorrow.



Discover how our students have
made the most of the career
opportunities while studying



STUDENT AND GRADUATE EMPLOYABILITY

Our Student and Graduate Employability team are here year-round to help you make the most out of your university experience before and after you graduate. They offer a variety of different services for all ages and levels of study to make sure your studies and work placements and any additional experience align with the opportunities available in the industries of today and tomorrow.

Career Connect offer:

- One-to-one career coaching.
- Coaching on interview techniques, CV writing and job applications.
- Tools and opportunities to develop the ability to recognise and articulate skills you have developed throughout university.
- Careers support for life!
- A new dedicated Graduate team to support you after you graduate
- Employer events and more!

UNITEMPS

Unitemps is Staffordshire University's own recruitment station, over the years they have developed strong links with local businesses across Stoke-on-Trent and North and South Staffordshire, offering work placements, internships, and employment to students, graduates and people from the local community.

WORK PLACEMENTS

In the current jobs market, you need more than qualifications alone. That's why we arm you with experience alongside your degree, so you can secure the right future career.

With jobs and placements in the UK and internationally, one size doesn't fit all. Your work experience maybe part of your course's connections, obtained through your academic school or the Career and Personal Development Team. Or it might be something you organise yourself. No matter how you find it, we'll help ensure it gives you the real hands-on learning your career needs.

GAINING WORK EXPERIENCE

There are so many opportunities in the UK and internationally to gain experience before, during and after your studies. We strongly encourage you to plan your experiences well, try lots of new activities and keep reflecting on what you have gained from every opportunity.

Rest assured, support is on hand to help you select and secure these experiences as it's so crucial to keep building networks, understanding your strengths and planning for what is sure to be an exciting future.

MY CAREER JOB PORTAL

'MyCareer' jobs and appointment portal is the first place to go to look for jobs and experiences and book on to a careers event, chat or book an appointment: www.staffs.ac.uk/mycareer

STAFFS MENTORING

Peer and Professional Mentoring Schemes have been designed to support you throughout your studies. The Peer Mentoring Scheme has been designed to help first year students build connections and confidence. We have hundreds of students on hand to mentor new starters and ensure they settle into university life. No problem is too big or too small. You might want to ask questions such as:

- My laptop is broken, where can I get it fixed?
- I'm a little homesick – how did you overcome it?
- I want to meet new people, what is the best way to get involved in university life?
- I like to keep fit and play sport; can you tell me more?
- I am looking for a part time job, how can I begin to look for one?

The Professional Mentoring Scheme will give you access to professional mentors all over the world who can help you with your studies and career readiness, also to search and secure placements and graduate jobs within your sector.



Learn more about our
Staffordshire University
sporting community



SPORT AT STAFFS



Take a look around our
state-of-the-art sports
facilities



SPORT AND WELLBEING

For some of our students, sport is the backbone of their university experience. Whether you're representing the University in the weekly British University & College Sports League or keeping your mind and body fit with a casual game of your favourite sport. From High Performance Athlete programme, National and Regional league teams, through to casual, recreational activity sessions – Sport At Staffs has you covered.

Whatever your sporting ability, there's something you can get stuck into at Staffordshire University, from football, netball, basketball and lacrosse, to more fun and friendly activities like Ultimate Frisbee® and glow-in-the-dark badminton.

OUR SPORTS FACILITIES INCLUDE:

- Grass pitches for football, lacrosse, American football, Ultimate Frisbee® and rugby
- Sports hall for badminton, volleyball, futsal and basketball
- Two floodlit AstroTurf pitches
- State-of-the-art 3G surfaces

OUR GYM

We have a newly equipped sports hall, new functional training rooms and an 80-station gym with cardio equipment, resistance equipment and free weights.

If you choose to live in University accommodation then access to the gym is free of charge, if not then membership starts at just £15 a month.





HIGH PERFORMANCE ACADEMY



Welcome to the High Performance Academy, Staffordshire University's home for high performing athletes to access extra support. The HPA can help you with your training and competition costs, gain treatment to ensure you're at peak physical condition and help with balancing both your sporting and academic calendar.

If you're a high performing sporting student, you are welcome to apply to any of the three-year long tailor-made scholarship or development schemes.



Scholarships:
Performance Athlete Scholarship Scheme (PASS)

Development Schemes:
Talented Athlete Development Scheme (TADS)
Coaching & Officiating Development Scheme (CODS)

All consist of the same basic support package which includes:

- Strength and conditioning
- Nutrition advice
- Sports psychology
- Sports therapy
- Academic flexibility
- HPA kit bundle
- Dual career mentoring
- Free gym and facility access

PERFORMANCE ATHLETE SCHOLARSHIP SCHEME

Our internally funded scholarship scheme allows you to access bursary amounts of up to £3,000 depending on the level of competition*.

When applying to be part of PASS applicants are required to have competed at either a regional, national or international stage within the past two years (evidence will be required on submission).

Once accepted onto the scholarship scheme, PASS athletes will have access to the following additional benefits:

- Strength and conditioning coached sessions
- One-to-one sports psychology sessions
- Higher levels of academic flexibility
- St Georges Park athlete testing/ experience days
- Dual career TASS qualified mentoring

*To receive this bursary funding applicants must be on a full-time undergraduate course.





Find out more about
our study modes



TEACHING WITH A DIFFERENCE



Take some time to find
the teaching that's
right for you



Full-time learning isn't the only way to complete a course with us. You can choose from several different study options – each designed to suit differing needs.

FULL-TIME

The most common way to study for an undergraduate degree is full-time. Ideal for school or college leavers who don't have other commitments, our full-time courses have various ways of studying and learning to tailor your degree to your career aspirations. From standard core and optional module-based learning, to focused modular, and pathway courses that let you choose a specialist route part-way through your course. For a full list of our undergraduate courses, visit: www.staffs.ac.uk/undergraduate

PART-TIME

A lot of our courses can also be studied on a part-time basis, too. You'll still get the same level of support, and

your studies may only take one year longer than the full-time option. If you study part-time, the duration of your course depends on the speed you wish to progress through the syllabus. For example, studying 'half-time' would be equivalent to 50% intensity of study and would typically double the length of your course from three to six years.

TWO-YEAR, ACCELERATED DEGREES

As a pioneer of the two-year degree, we know exactly how to make this work for our students. It's quicker (obviously) than a traditional degree, as you'll only be studying for two years. As a result, you could save a whole year's rent, food and transport costs, and get a head start on your career. It's important to know that it'll be an intensive degree programme, because you'll study for three semesters each year instead of two. Discover more about our two-year accelerated degrees at: www.staffs.ac.uk/accelerated-degrees

FOUNDATION AND PLACEMENT YEARS

Foundation year: These are one-year full-time courses to prepare you for degree level work. On successful completion of the Foundation Year you will automatically progress onto the first year of the relevant degree.

Placement year: We offer a range of courses that encompass a Placement Year. Sometimes called a 'sandwich year', these courses include a period of work placement between your second and third year enabling you to gain work experience and enhance your employability.

INTEGRATED MASTERS

An integrated Masters degree is a four year course (or five years with placement) that combines undergraduate and postgraduate study in a single course. The entry requirements will often be higher than for a three-year degree, but the savings make it worth the hard work.

DISTANCE LEARNING

Distance learning is a dynamic way of studying. Instead of attending lectures, you'll study and submit assignments online and attend virtual tutorials. Providing you have use of a computer with internet access, you can study from home, your workplace, or almost anywhere in the world, making it the most flexible learning pathway available. Our online distance learning students are supported by a dedicated team of tutors who are available online and by phone to guide and advise. Find out more at: www.staffs.ac.uk/distancelearning

HIGHER AND DEGREE APPRENTICESHIPS

Higher and degree apprenticeships combine work with study to fast-track your career. We offer a range of higher and degree apprenticeships and work closely with organisations such as BT and the NHS. Find out more at www.staffs.ac.uk/apprenticeships



MAKING A CHANGE THROUGH RESEARCH

78% of our research is rated world-leading or internationally excellent in the last Research Excellence Framework, and our dedicated research centres at the University underpin our teaching and our strategic aim to encourage staff and students to engage in scholarly activity and external research collaborations.

50

The Staffordshire Centre for Psychological Research brings together practitioners, academics, policymakers and the community in specialised applied psychological research. The applications and collaborations are local, national and international, including local hospitals as well as international healthcare centres such as the Sao Paulo Hospital in Brazil, and span a broad range of disciplines to address problems on Health and Clinical Psychology. The centre is continually developing wider links and applications in psychological research.

CHAD is an innovative venture established between Staffordshire County Council, Stoke-on-Trent City Council and Staffordshire University. It deals with

The C3 Centre engages in research that reflects the search for new conceptual and critical insights into practices used by individual artists, collectives and creative thinkers who are passionate about engaging, interacting and co-creating with local, national and global societies, cultures and communities. Focus

The Centre for Crime, Justice and Security aims for the promotion, development and implementation of justice in all of its forms. Work primarily focuses on criminal justice and how social justice impacts and is impacted by criminal justice practices. The work we do with local, national and international communities aims to enrich and transform lives and to positively impact on policy and practice in wider social and criminal justice environments.

MAKING A CHANGE THROUGH RESEARCH



Check out the latest
research developments here
at Staffordshire University



CENTRE OF ARCHAEOLOGY

The Centre of Archaeology is an internationally renowned centre of research and knowledge exchange that is committed to addressing some of the biggest challenges affecting global society such as genocide, conflict, social justice, identity and environmental change. We are currently undertaking pioneering work in the fields of Holocaust Archaeology, forensic approaches to buried remains and the development of non-destructive archaeological methods. Our fieldwork has included surveys at extermination camps and killing sites all over Europe, including Treblinka in Poland, Staro Sajmiste in Serbia and Jasenovac in Croatia.

CENTRE FOR BIOMECHANICS AND REHABILITATION TECHNOLOGIES

The Centre for Biomechanics and Rehabilitation Technologies aims to improve health, quality of life and healthcare provision by solving complex musculoskeletal biomechanical issues through highly innovative and integrated approaches. With numerous publications, the centre has an excellent track record of research accomplishments and collaboration with industry partners and health services sectors across the world. The research on orthotics, footwear and mobility assistive technology aims to support people and improve their lives. Furthermore, the centre's research on predicting the risk for diabetic foot ulcers aims to aid the prevention of amputations that impose major health and economic burdens. The staff also work with various international agencies focusing on global policy areas relating to assistive technology.

STAFFORDSHIRE CENTRE OF LEARNING AND PEDAGOGIC PRACTICE (SCOLPP)

SCoLPP is committed to developing evidence-informed pedagogic practice which connects learning and teaching to enhanced social mobility. Research themes include: examining pedagogical possibilities and evaluating the emancipatory nature of learning; developing evidence informed evaluation methodologies for capturing the socio-cultural impact of effective learning approaches; translating evidence-informed learning into thought-leading participatory practice and collaborative enquiry.

CENTRE FOR SMART SYSTEMS, AI AND CYBER SECURITY

The Centre for Smart Systems, AI and Cyber Security focuses research on three areas that are critical for the constant development of technology and infrastructure in 21st century emerging industries. Smart systems research focuses on the embedding of technology and the Internet of Things into modern living and working environments. Artificial Intelligence (AI) research covers machine learning and the integration of AI into areas like surveillance, predictive analysis for health and climate data, computational intelligence, smart cities, security engineering, and much more. As the third area, Cyber Security research develops the governance and protection of systems within business and personal environments.

STAFFORDSHIRE CENTRE FOR SUSTAINABLE AND RENEWABLE ENGINEERING

The Staffordshire Centre for Sustainable and Renewable Engineering is born from our commitment to make a better and lasting environment for future generations. The centre aims to carry out world-leading theoretical and applied research and knowledge exchange to address complex real-world engineering challenges. This research impacts peoples lives and the environment they live in, improving life satisfaction, productivity and sustainability, in areas like renewable and low carbon energy, sustainability manufacturing, and sustainable transport.

THE CENTRE FOR RESEARCH IN THE DIGITAL ENTERTAINMENT AND MEDIA INDUSTRIES (DEMI)

The Centre for Digital Entertainment and Media Industries (DEMI) straddles Media, Performance and Communication and Games and Visual Effects, and responds to an increased sense of digital media convergence across the sector. The centre was developed to establish a rigorous research base for the study of the media and interactive entertainment industries while ensuring that the media industries are a key driver for economic growth and prosperity in our region.



Discover more about
our Higher and Degree
Apprenticeships



HIGHER AND DEGREE APPRENTICESHIPS



Dig into our Higher and
Degree Apprenticeships
opportunities



If you're interested in combining practical, on-the-job training with studying for a university qualification, a degree or higher apprenticeship could be the answer.

Higher and degree apprenticeships are fast becoming recognised as an exciting way to study for a university degree or award while earning a salary. They provide the opportunity for your new job to be enhanced by university learning – or to gain new qualifications to help you progress in your current career. A higher apprenticeship typically takes two years to complete, while a degree apprenticeship normally takes three to four years. As an apprentice you are fully employed, and your university course is designed around your job role.

VALUABLE CONNECTIONS

Take either a higher or degree apprenticeship with us and you'll divide your time between the workplace and university. All apprentices must be in suitable paid employment. Because you'll be spending valuable time

in work, learning practical skills, you'll also be able to make valuable connections with people in your chosen industry or profession.

NO TUITION FEES

Higher and degree apprenticeships are funded by a government agency. As there's no tuition cost for you, your university learning experience will be debt-free.

WHO ARE APPRENTICESHIPS FOR?

Higher and degree apprenticeships are suitable for college leavers and existing employees looking to progress in their chosen career. Opportunities span all sorts of different occupations in many sectors, such as business, engineering, health, digital and more. And because each apprenticeship is designed in association with an employer, you can be safe in the knowledge that you're gaining career-boosting practical skills alongside the academic knowledge demanded by your chosen industry or sector.

WHY STAFFORDSHIRE UNIVERSITY?

This is an exciting time for higher and degree apprenticeships at Staffordshire University. We work with some of the country's largest employers and we're continually working to introduce an even wider choice of apprenticeships. So, whether you're keen to enter the workplace quickly and earn a salary, or you want to progress further with your current employer, there's every chance we've an apprenticeship that's perfect for you.

WHICH LEVEL IS FOR ME?

Whether you study for a higher apprenticeship or a degree apprenticeship will depend on the apprenticeship you're interested in. If you're already employed, it will be determined by the needs of your employer.

Higher apprenticeship – you'll study at Levels 4 or 5 equivalent to a foundation degree and above.

Degree apprenticeship – you'll study for a full Bachelors degree (Level 6) or a full Masters degree (Level 7).

Higher and degree apprenticeships will require a level 3 qualification, subject to school and level of standard. But don't worry if you don't meet these criteria our University is committed to diversity and inclusion and will consider applications from those with relevant experience on an individual basis.

Typical entry requirements:

- 5 GCSEs – grade C or above equivalent in Maths and English.
- 64-112 UCAS points from relevant level 3 qualifications, e.g. A levels/BTEC. Evidence of significant relevant previous learning or experience may be considered on an individual basis.
- Must have a contract of employment to cover you for the duration of the apprenticeship for a minimum of 30 hours a week.

HIGHER AND DEGREE APPRENTICESHIPS



"The best thing about being an apprentice is the introduction into the career and hands on experience that you are getting, while getting your degree. I would 100% recommend getting into apprenticeships from an early age. I believe if you want a good solid career with an education, this is the way to go."

CRAIG LAWRENCE

ENGINEERING APPRENTICE, ARCONIC



OUR APPRENTICESHIPS

BUSINESS AND ADMINISTRATION:

Chartered Manager Degree Apprenticeship
Digital Marketer Degree Apprenticeship
HR Consultant/Partner Apprenticeship
Operations/Departmental Manager Apprenticeship
Senior Leader Masters Degree Apprenticeship

CARE SERVICES:

Social Worker Degree Apprenticeship

DIGITAL:

Digital and Technology Solutions Degree Apprenticeship
Software Developer Apprenticeship
Network Engineer Apprenticeship

HEALTH AND SCIENCE:

Advanced Forensic Practitioner (Custody or Sexual Offence)
Healthcare Assistant Practitioner Higher Apprenticeship
Healthcare Science Practitioner Degree Apprenticeship
Nursing Associate/ FdSc Nursing Associate
Operating Department Practice Degree Apprenticeship
Registered Nurse/ BSc (Hons) Nursing Practice

MANUFACTURING AND ENGINEERING:

Embedded Electronic Systems Design and Development
Engineer Degree Apprenticeship
Manufacturing Engineer Degree Apprenticeship

PROTECTIVE SERVICES:

Police Constable Degree Apprenticeship

COMING SOON:

Accountancy/Taxation Professional*
Cyber Security Technical Professional*
Paramedic*
Advanced Clinical Practitioner*
Psychological Wellbeing Practitioner*
Children, Young People and Families Manager*

*Subject to validation

Courses listed as 'subject to validation' are in the final process of approval. Full validation is not guaranteed, and should the course be significantly amended or deemed unfit, you will be contacted by the University. For more information visit: www.staffs.ac.uk/validation

APPLICATION JOURNEY

When it comes to education, it's important to make the right choice for your future. At Staffordshire University, we want to provide you with the right information for you to make that choice – that's why we are planning to organise Open Days and visit a variety of recruitment events throughout 2022 and 2023.

Third-party dates and deadlines may be subject to change, view UCAS online or visit our website for the latest guidance.

IMPORTANT APPLICATION DATES

Whatever your circumstances, you can apply for Staffordshire University right up until September 2023. However, our accommodation and courses fill up fast so try your best to hit the recommended application date.

25 JAN 2023

APPLICATION DEADLINE

We encourage you to apply by this UCAS recommended date to ensure your application is considered early.

FEB 2023

UCAS EXTRA OPENS

If you've used all choices on your application, and you're not holding any offers, you can still find a place using UCAS Extra.

JULY 2023

CLEARING OPENS

Clearing is your final chance to get an offer for a place on one of our courses but bear in mind, places are limited.

JULY - AUG 2023

RESULTS DAYS

Typically, you should get your results between July and August 2023 depending on what you're studying.

AFTER YOU'VE APPLIED

If you've submitted your application by UCAS's recommended application date of 25 January and been made an offer, you will start your post-application journey.

JAN - APRIL 2023

OFFER HOLDER DAYS

Get an exclusive tour around your future campus and find out more about your chosen course.

JAN - SEP 2023

APPLY FOR YOUR ACCOMMODATION

Once you've made Staffordshire University your firm choice, you are eligible to apply for your first-year accommodation.

MAR - APRIL 2023

APPLYING FOR FINANCE

Get your finances sorted as soon as possible so you can concentrate on your exams – it's easier than it looks!

JULY - SEP 2023

ENROLMENT

Relax and settle into Staffordshire University life on our activity-packed Welcome Week. **You've made it.**



WAYS TO JOIN US

Depending on your situation, there are five main routes that you can take to begin studying at Staffordshire University.



A LEVELS

If you have taken or are taking GCE A levels, the exact grades and subjects you need will depend on the course you want to study. The qualifications you get will translate directly into UCAS tariff points, and you'll be able to check whether the qualifications you're predicted/have are right for what you want to study. You'll find the entry requirements for your chosen course on the course page of our website.



FOUNDATION LEVEL COURSES

A number of our degrees are available with a foundation year, helping bridge the gap between your school or college qualifications and your chosen degree. Foundation courses tend to have lower entry requirements and are designed to prepare students for seamless transition onto a full degree course. Taking a foundation course, then progressing on to a full degree, will extend the total study period by one year.



ACCESS TO HE DIPLOMA

Most Further Education colleges in the UK offer Access to HE courses in a range of subjects at Level 3. These special diplomas are specifically designed to take you into the subject you want to study. Many of our students come through an Access to HE path, so you'll find that we know exactly how to support you. Once you apply, we'll cross-reference the units you've studied at college to help you get a lot closer to the course and the career you want.



BTECS

Many of our students join us using BTEC qualifications, often at different levels:

- Level 4 BTEC – equivalent to A-Levels, this is a traditional route to a 3-year degree.
- Level 5 (HNC)/ Level 6 (HND) – advanced qualifications that allow us to map your progress to begin your studies in the second or third year of a degree.



STEP UP TO HE

Step Up to HE is a free 10-week course that will give you a taste of what it's like to study at university and allow you to study a range of subjects with us. What's more, when you're ready to apply, we'll give you all the help you need with your UCAS application. To find out more, or to apply for our Step Up to HE course, call: **01782 294400** or visit: www.staffs.ac.uk/stepup



Find out more about becoming a Staffordshire University student



Although these are the five main routes to study, we always welcome a wide range of qualifications and qualification combinations. We assess each application individually, taking into account any experience and skills you may have in your chosen field.

ENTRY REQUIREMENTS

We're committed to connecting students of all ages, skills and experiences with higher education and are a leading voice in alternative routes into university.

So, if you think you've done things a little differently and aren't sure if you're eligible to study, get in touch and see. We assess each application individually, taking into account any experience and skills you may have in your chosen field.

Don't worry if you can't see your qualification listed. Just contact our team of experts on **01782 294400** or email us at enquiries@staffs.ac.uk

OUR OFFERS

We use the UCAS points tariff in our offer-making and don't discriminate between pre-2015 old style A and AS levels and the ones reformed after 2015. We also don't discriminate between the pre-2016 old specification BTECs (QCF) and the ones reformed for first delivery from 2016 (RQF). In most cases, you will probably need at least the minimum number of points or grades required for your chosen course. Typically, this would mean one of the following scenarios:

- Two/three GCE A level or AVCE subjects
- One GCE A level Double Award or AVCE Double award
- A combination of one GCE A level and an Advanced Welsh Baccalaureate - Skills Challenge Certificate
- BTEC National (QCF) Extended Diploma
- BTEC National Diploma/BTEC Subsidiary Diploma combined with other level 3 qualification to achieve tariff points
- Access to HE Diploma
- Three SQA Highers and Two Advanced Highers
- Irish Leaving Certificate Higher grades
- An Irish FETAC or QQI award
- An award of the European Baccalaureate Diploma with at least 70% overall
- An award of the International Baccalaureate Diploma achieved by passing each of the required components and achieving a total IB point score of 28-

32 or required tariff points from individual components of the IB

- A pass in an Advanced Apprenticeship
- Achievement of an OCR National Diploma or Extended Diploma
- A successfully completed NVQ at level 3 or above
- A pass in a university-validated foundation course
- A pass in a university foundation year

GCSE REQUIREMENTS

English and Maths at Grade C/Score 4 (or Level 2 equivalents) are required as a minimum for all our courses. Some courses also require other subject specific GCSE requirements. These will be stipulated on our course pages on our website.

INTERNATIONAL APPLICANTS

We accept a wide range of qualifications from around the world. For more information visit: www.staffs.ac.uk/english-language-requirements

ENGLISH LANGUAGE REQUIREMENTS

Most of our courses require a minimum IELTS score of 6.0 overall with 5.5 in each component or an equivalent approved qualification. However, some courses have higher entry criteria due to accreditation requirements or the need to have exceptional communication skills as part of the course.

The Staffordshire University Pre-Sessional Programmes are designed for students who intend to study undergraduate or postgraduate courses at Staffordshire University, but do not meet the language requirements for direct entry. For more information on all of our Pre-Sessional English programmes, and the next steps to take if English is not your first language, please visit: www.staffs.ac.uk/english-language-courses



Learn more about UCAS points and our entry requirements



UCAS POINTS AND WHAT THEY MEAN

There are numerous different ways to study at Staffordshire University. But with so many qualifications available, it's important to have one scale to measure everything. That's where UCAS points come in.

The UCAS tariff converts the grades you achieve into points. That way, a wide range of qualifications can be compared and considered during the application process. For some courses, specific subjects and grades may also be required.

Our full entry requirements can be found at: www.staffs.ac.uk/courses/undergraduate/entry-requirements

The tables opposite will help you see how your grades convert into UCAS points, so you can start working out exactly what you need.

For help with converting your qualifications into UCAS points, visit: www.ucas.com/ucas/tariff-calculator

For further information about our courses please contact our Enquiries Team on: 01782 294400.

UCAS POINTS CALCULATOR

The information below is designed to help you calculate the number of UCAS points awarded to the different qualifications you may have studied.

Points are not included for all qualifications but further information is available on page 63 of our prospectus.

A level and AVCE

A*	56
A	48
B	40
C	32
D	24
E	16

AS Level and AS VCE

A	20
B	16
C	12
D	10
E	6

BTEC National Extended Diploma/ BTEC Level 3 National Extended Diploma

D*D*D*	168
D*D*D	160
D*DD	152
DDD	144
DDM	128
DMM	112
MMM	96
MMP	80
MPP	64
PPP	48



Find out all about fees
and funding



FEES AND FINANCE

University fees might sound daunting at first, but remember...
You aren't just investing in us, you're investing in your future career.

TUITION FEES 2023/24

HOME STUDENTS

Current fees for 2023/24 are listed as below. The annual fee for undergraduate students studying full-time is £9,250 for 2023/24. This is a regulated fee; the Government determines the maximum fee a university may charge. The University expects to apply any permitted increase, so subsequent years' fees may increase, but will do so by no more than the rate of inflation as measured by the RPIX index.

Any permitted increases in fees will be published on the University's website so for the most up-to-date fees information please refer to our website.

2023/24 FEES:

- All full-time undergraduate degrees – £9,250.00
- Two-year accelerated degrees – £11,100.00*
- We also offer a pro-rata fee structure for part-time study.

INTERNATIONAL STUDENTS

- All full-time undergraduate degrees – £14,500*
- All full-time undergraduate health degrees (inclusive of Practice Placement Fee) – £16,750*

For more information about fees visit:
www.staffs.ac.uk/international-fees

ABOUT OUR FEES

New and continuing students will be charged the maximum permitted fee, determined by the UK Government and measured on how we perform against the Teaching Excellence Framework. Fees for our part-time undergraduate courses are usually a proportion of the full-time fee depending on the number of modules studied (commonly referred to as 'course intensity'). Placement year fees will be charged at no more than 20% of the normal tuition fee. For further information please visit: www.staffs.ac.uk/undergraduate/fees

ADDITIONAL COURSE COSTS

If there are additional costs associated with any course they will be listed on the relevant course pages on our website. Additional costs typically include items such as:

- Equipment hire
- Art materials
- Optional field trips
- Printing
- Books you wish to purchase.

Please note: Accommodation and living costs are not included in our tuition fees. For further details on what's included in your tuition fees please visit the individual course pages on our website.

FINANCIAL SUPPORT

LOANS FOR TUITION FEES

Eligible UK students are entitled to apply for a tuition fee loan to cover the full cost of tuition fees. These are paid direct to the University and you don't have to pay anything back until you have graduated and are earning over £27,295 (Plan 2) per annum*.

LOANS FOR LIVING COSTS (UK STUDENTS ONLY)

Eligible UK students can also take out a maintenance loan to help pay for things like accommodation, food, transport and books. The maximum amount you can borrow depends on your household income as well as where you are studying and living. This will be paid into your nominated bank account at the start of each term once confirmation of your registration has been sent to Student Finance. Find out more at:
www.gov.uk/student-finance

SOURCES OF ADDITIONAL FINANCIAL SUPPORT

If you receive funding from Student Finance you may be eligible to apply for additional support. Details of the financial support available and how to apply for it can be obtained by visiting: www.gov.uk

Extra funding is available for students with dependents as well as for those who have disabilities. Full details, including a student finance calculator, can be found at:
www.gov.uk/student-finance

*Correct at time of going to print (February 2022), please see our website for the latest guidance.



Check out our helpful videos on fees and finance





WHAT CAN I STUDY?

At Staffordshire University we offer courses that inspire our students to Be the Change in today's industry, and tomorrow's world. In the following pages you will discover our Study Areas – the first step on your journey to your successful career. Whether you're destined to become the next breath-taking artist, a figurehead in future business, on the frontline in cyber defence and justice, developing AAA blockbusters in games and film, or saving lives in the healthcare sector... we've got you covered!

Our Study Areas are split up into sections of related disciplines that should perk your interest and ambitions, and contain all of the reasons you need to take your next steps into the future with us, as well as snapshots of our great facilities, and career information you might find useful. They also contain unique QR code links that will take you to areas of our ever-evolving website, so you can be sure that you are getting the most up-to-date information from academics and students that are living the Staffordshire University experience right now.

Found something you're interested in? Check out our course pages online and get access to up-to-date information and apply links at: staffs.ac.uk/courses

Study Area	Page
ART AND DESIGN	70 - 75
BUSINESS, FINANCE AND LEISURE	76 - 81
COMPUTING	82 - 87
CRIMINAL JUSTICE AND INTERNATIONAL RELATIONS	88 - 93
Including: Criminology • Forensic Science • History, Security and International Relations • Policing and Investigation	
EDUCATION, CHILDREN AND TEACHING	94 - 99
ENGINEERING	100 - 105
GAMES	106 - 111
Including: Esports • Games Art	
HEALTH AND WELLBEING	112 - 117
Including: Health and Social Care • Midwifery • Nursing • Operating Department Practice • Paramedic Science	
LAW	118 - 123
MEDIA, PERFORMANCE AND COMMUNICATION	124 - 129
Including: Acting and Drama • English and Creative Writing • Film and Media • Music and Sound	
SCIENCES	130 - 135
Including: Life Sciences for Health • Psychology	
SOCIETY AND PEOPLE	136 - 141
Including: Geography and Climate Change • Social Justice • Social Work	
SPORT AND EXERCISE	142 - 147
Including: Physical Education, Coaching and Football • Sport and Exercise Sciences	



View our
courses online



ART AND DESIGN

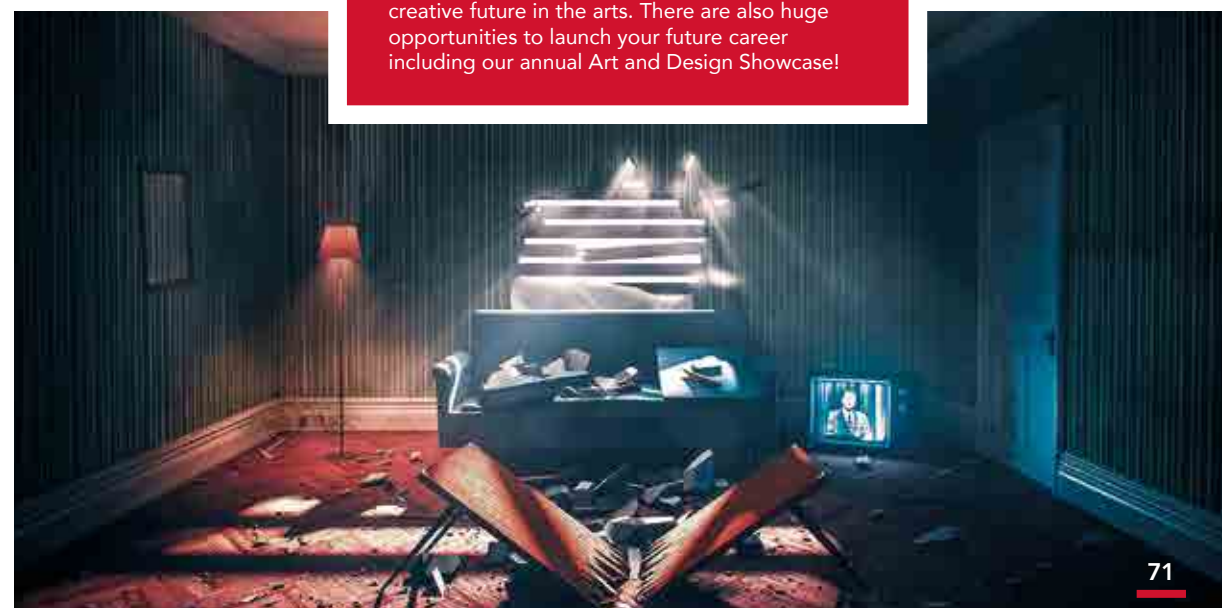
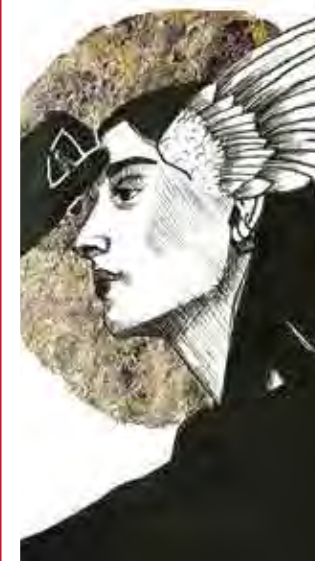


ART AND DESIGN

We're one of the country's leading universities for Art and Design - ranking fifth for Design and Crafts and fifth for Fashion and Textiles in the 2022 Guardian League Tables.

Wherever your passion lies, we have the ideal course to suit your ambitions; from designing the buildings and vehicles of the future or capturing the moments that matter in photography, through to creating your own comic universe or leading fashion trends.

You'll study in first-rate workshops and dedicated studio facilities and all our courses are taught by expert academics that, with their experience and success in their fields, can guide you to a creative future in the arts. There are also huge opportunities to launch your future career including our annual Art and Design Showcase!



Our Art and Design area offers a variety of specialist courses designed to let you pursue your passions and career ambitions.

- Architecture • Ceramics
- Furniture Design • Photography
- Fine Art • Graphic Design
- Illustration • Animation • Surface Pattern • Fashion • Cartoon and Comic Arts • Art and Design Foundation • Product Design
- Transport Design

" THE FACILITIES ARE INCREDIBLE! THE KIT, THE STUDIOS; THERE ARE SO MANY FEATURES THAT STOOD OUT FOR ME. THE TUTORS ARE ALSO REALLY GENEROUS WITH THEIR TIME. THE ENERGY AS WELL - WHEN YOU COME INTO THE DEPARTMENT, THERE'S ALWAYS SOMEONE THAT WANTS TO HELP. IT'S JUST A REALLY LOVELY ATMOSPHERE."



EL GABRIEL BROWN

BA (Hons) PHOTOGRAPHY

CONNECT WITH
OUR STUDENTS



FACILITIES

SMART ZONE

A £1.3m zone that fuses state-of-the-art fabrication spaces with augmented and blended reality facilities, allowing you to bring your ideas to life using the latest engineering, digital and immersive technologies.

DEDICATED STUDIOS

Our courses have studios dedicated and equipped for the needs of their subject, such as the cartoon and comic arts studio, that boasts Wacom Cintiq tablets and computing facilities that include Adobe Creative Suite, Manga Studio and Motion Artist.

WORKSHOPS

We have a large range of workshops for you to design and make the products of tomorrow, including our 3D workshops, which facilitate work with heavy and fine metals, wood, plastics, ceramics and resin, and are equipped with machinery including laser cutters, milling tools and 3D printers.

CAD MODELLING SUITE

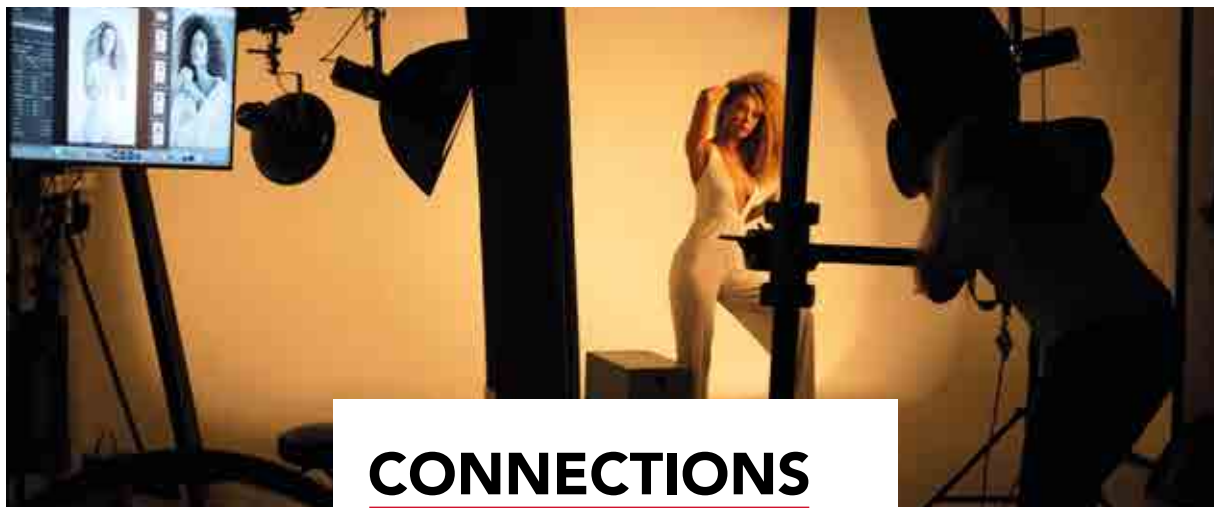
Get access to our dedicated CAD modelling suite with industry relevant software including SolidWorks and Alias, as well as rendering packages like KeyShot.

GRAPHIC STUDIO

Our graphics studios and illustration workspace are an exciting creative hub, equipped with iMacs and industry-standard software, creative learning zones and state-of-the-art digital printing.

PRINT BUREAU AND ART SHOP

Book in jobs, pay for prints, collect work and get technical support using our collection of 3D printers that include Mojo, Up Box, Markforged Onyx One, Formlab 2, and Ultimaker 3. The Art Shop is stocked with an extensive range of goods offering professional quality creative materials at affordable prices, and specialist staff who work with academics and technical staff to advise students on the best materials.



CONNECTIONS

All our art and design courses are set up to help you to make the most out of your higher education experience, connecting with industry professionals through opportunities to travel to conventions and places of interests, as well as adding inspirational and successful guest lectures throughout.

Not only this, our courses allow you to showcase your work at different events, including our in-house Art and Design Showcase, which attracts big names in the sector every year, and is attended by guests that include TV personalities, ceramists, and even Oscar nominated animators!

CAREERS

Once you've found your passion in the art and design world, we will help you hone your skills to get you career ready through work experience opportunities, showcasing and portfolio building.

The careers in this sector are endless. Our graduates have gone on to find success as internationally featured photographers and artists, innovative product and transport designers and fashion designers, or working at renowned companies in the animation, comic art and graphic design sectors.



CONNECT
WITH OUR
EXPERTS



"FANTASTIC STUDIOS AND WORKSHOP FACILITIES ENABLE OUR ART AND DESIGN STUDENTS TO GAIN ALL THE SKILLS THEY WILL NEED TO SUCCEED IN THE CREATIVE INDUSTRIES!"



HUGH WILLIAMSON

HEAD OF DEPARTMENT - ART AND DESIGN

MEET THE EXPERTS



ADRIAN TOOTH

COURSE DIRECTOR
(CARTOON AND COMIC ARTS)



DAN LEWIS

COURSE DIRECTOR
(DESIGN)



JOHN HUDSON

COURSE DIRECTOR
(VISUAL COMMUNICATION)



JESS LONGMORE

COURSE LEADER
(ART AND DESIGN FOUNDATION)



MICHAEL BRANTHWAITE

COURSE DIRECTOR
(VISUAL ARTS)



View our
courses online



BUSINESS, FINANCE, AND LEISURE



BUSINESS, FINANCE AND LEISURE

Start your journey into future success with Staffordshire University. Whether you have a passion for entrepreneurship, marketing or resort management, or you want to climb the corporate ladder – we have the course for you.

All our courses have been re-designed to ensure that you're closer to industry than you've ever been, using the most up-to-date tools, research-led teaching and methods that are proven to succeed in ever-changing environments.

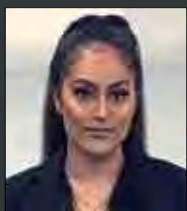


Our Business area offers a new suite of courses, designed to match your passions in the emerging industries.

Business Innovation and Entrepreneurship • Business Management and Sustainability

- Finance and Business Enterprise
- Digital and Social Media Marketing
- Visitor Attraction and Resort Management

"THE RESOURCES AND OPPORTUNITIES HERE ARE FANTASTIC AND ONE THING STAFFORDSHIRE UNIVERSITY HAS TAUGHT ME IS THAT EVERYTHING IS ACHIEVED THROUGH HARD WORK AND DEDICATION."



HANNAH SEERA

BUSINESS, FINANCE
AND LEISURE GRADUATE

CONNECT WITH
OUR STUDENTS



FACILITIES

THE CATALYST

New for 2022, and home to students studying our business, finance and leisure courses, our Catalyst building will combine business, networking and apprenticeship opportunities with dynamic teaching spaces and state-of-the-art digital facilities – the perfect launchpad for your future career.

Networking and business collaboration are key to the building's objective, with drop-ins from industry employers, as well as an open plan social and food zone that create a casual, yet professional atmosphere. Every day will offer the opportunity to make life-changing connections.

The Catalyst will have dedicated teaching spaces including a Learning Market suitable for delivering presentations and group activities, a Learning Lab that is ideal for collaboration and Webinar Pods which are perfect for individual study sessions or small group sessions.

LIBRARY RESOURCE

Get the knowledge you need to strengthen your understanding of the business world using our range of online and offline library resources, available for students 24/7.

ENTERPRISE ZONE

Welcome to the Enterprise Zone, a place where, as a student, you are able to work and study alongside business start-ups from all over the country in a huge variety of industries. The Enterprise Zone houses unique facilities that take start-ups through idea generation, to creation and implementation such as the Collaboratory and the Incubator, both of which are key stages for building your new profile in entrepreneurship.



CONNECTIONS

Staffordshire University is connected to industry through course design, professionally active academics, and business partnerships with the likes of Merlin Group. Our connections work together to give you the best chance of employability after you graduate and provide you with guaranteed work experience opportunities throughout your course.

What's more, we're always one step ahead of the game when it comes to forward-thinking business activities. We are soon to become part of a larger Centre for Business Innovation and Entrepreneurship, which gives you, as a student, the chance to experience real-world projects through start-up ventures and established stakeholders in business.



CAREERS

Our courses are designed to build the foundations of business you need to succeed in various future roles. All courses have a multidisciplinary first year, and allow you to follow your passions by applying specialist topics further along the courses.

Our graduates have had success in regional, national and overseas business in roles like business managers, public relations officers, entrepreneurs, operational researchers, accountants, marketing officers, and more.



CONNECT
WITH OUR
EXPERTS



"A COMBINATION OF INNOVATIVE DELIVERY METHODS, RESEARCH-INFORMED TEACHING, OUR NEW CATALYST BUILDING AND OUR ACCESS TO A NETWORK OF DIVERSE LOCAL, REGIONAL AND NATIONAL EMPLOYERS, ENABLES US TO DELIVER A RANGE OF FUTURE-PROOF PROGRAMMES TO ENABLE OUR GRADUATES TO ENHANCE THEIR EMPLOYABILITY AND BE WELL PREPARED FOR THE CAREERS OF THE FUTURE."



**CAROL
SOUTHALL**

HEAD OF DEPARTMENT
(BUSINESS AND LAW)

MEET THE EXPERTS



**STORM
BARRATT**

COURSE DIRECTOR
(BUSINESS
MANAGEMENT)



**MARZENA
RESZKA**

COURSE LEADER
(ENTREPRENEURSHIP)



**KATHRYN
MITCHELL**

COURSE LEADER
(MARKETING)



**SYED
ZAIDI**

COURSE LEADER
(FINANCE AND
BUSINESS ENTERPRISE)



View our
courses online



COMPUTING



COMPUTING

Computing underpins almost every industry in the world. Join the journey Staffordshire University has been travelling for over 50 years and get the skills you need to be in high demand in your future career.

Whether it's computer science, cyber security or artificial intelligence and robotics that you're interested in, we have the knowledge, expertise and state-of-the-art facilities you need to turn your passion into a career. Plus, with all our courses being accredited by the British Computer Society, offering additional professional certifications and guaranteed work placements, you'll be leaving Staffordshire University with more than just a degree.



Our computing area offers courses that cover the key areas in the modern industry.

Computer Science • Cloud Technologies • Internet and Web Management • Network Computing • Software Development • AI and Robotics • Cyber Security

“ MY PLACEMENT WAS A YEAR WITH AIRBUS IN BAVARIA, GERMANY. THE EXPERIENCE WAS INVALUABLE AND WAS CERTAINLY MY FAVOURITE YEAR BEING A STUDENT.”



**JAMES
COOK**

BSc (Hons) COMPUTER
SCIENCE

CONNECT WITH
OUR STUDENTS



FACILITIES

NETWORKING LABS

Our network labs are connected by a CAB room which contains 400+ industry standard network devices, mostly Cisco and Cisco Meraki switches, routers, firewalls, wireless LAN controllers and network traffic generators.

SOFTWARE DEVELOPMENT ENVIRONMENTS

You'll have access to development environments for desktop, mobile and enterprise applications. Plus, get access to our iMac lab for iPhone and iPad development and a variety of mobile devices for testing.

CYBER SECURITY LABS

Access powerful forensic tools used in the recovery of data and criminal investigations in our cyber security labs. Discover the software which enables data recovery from a wide range of devices such as PCs, phones, mobile devices, watches and Sat Nav units.

DATA ANALYTICS CENTRE

Get access to software including Oracle and SQL Server, NoSQL data stores such as MongoDB, and technologies which support Hadoop. You'll also have physical and virtual environments to develop practical skills.

AI AND ROBOTICS LAB

Our Real Time Lab has a suite of 20, 6 axis programmable robotic arms, autonomous vehicles, micro-controllers, motor sensors and state-of-the-art design suites for embedded software programming and electronic design.

USABILITY LAB

Our Software Development and Internet and Web Management students can access our Usability Lab which is equipped with observation cameras and eye trackers to investigate how developed software works for different types of user.



CONNECTIONS

At Staffordshire University, we don't just connect you to knowledge, we offer every student the chance to make connections in the real-world through guaranteed work placements and professional certifications with the likes of Microsoft, Juniper and Cisco.

Each year, we place around 200 students with leading names in computing in the UK or overseas with companies like Sky, CERN, BAE Systems, BMW, IBM, and more!

CAREERS

Experts in computing are in demand in all types of industry, from retail and manufacturing, right through to finance and defence.

The career possibilities for our computing graduates are endless, and through our courses and pathways you will be able to find your passion while you study. Graduating students have gone on to enjoy success in roles like application programmers, IT systems analysts, web developers, software engineers and network administrators.



CONNECT
WITH OUR
EXPERTS



"OUR COURSES COVER ALL AREAS OF COMPUTING, ARE INDUSTRY RELEVANT, INCLUDE RELATED CERTIFICATIONS SUCH AS FROM AWS (AMAZON WEB SERVICES), AND ARE ACCREDITED BY THE BCS (BRITISH COMPUTER SOCIETY)."



**DR RUSSELL
CAMPION**

(ASSOCIATE PROFESSOR)
HEAD OF COMPUTING

MEET THE EXPERTS



**ROBIN
OLDHAM**

COURSE DIRECTOR
(COMPUTER SCIENCE)



**DR DAVID
DYKE**

COURSE DIRECTOR
(AI, ROBOTICS AND
BIG DATA)



**FIONA
KNIGHT**

SENIOR LECTURER
(COMPUTER SCIENCE)



**CHRISTOPHER
HOWARD**

COURSE DIRECTOR
(CYBER SECURITY)



View our
courses online



CRIMINAL JUSTICE AND INTERNATIONAL RELATIONS



CRIMINAL JUSTICE AND INTERNATIONAL RELATIONS

Are you the answer to creating a just society and a safe and sustainable future? Join the experts at Staffordshire University as we explore how to protect and serve our communities through a variety of courses focused on criminal justice and international relations.

Our courses focus on the whole of the justice sector, from understanding the factors that lead to injustice in international relations, global politics and criminology through to how to address these in frontline policing, forensics, intelligence, global security and criminal investigations. When you combine these courses with expert academics, outstanding facilities and diverse partnerships, such as our Staffordshire Forensic Partnership, you have the perfect launchpad for a future career as the leaders of tomorrow.



Our Criminal Justice and International Relations area offers a variety of different courses depending on what you want to specialise in.

- Criminology
- Forensic Investigation
- Policing
- Criminal Investigation
- International Relations and History
- Forensic Science
- Security and Intelligence
- Forensic Psychology

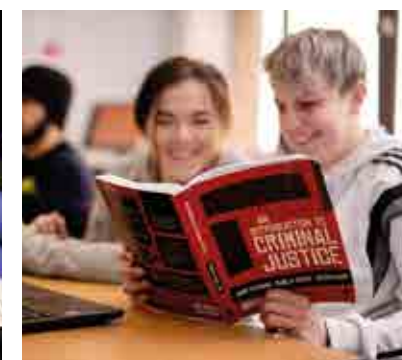
"THE COURSE HAS PROVIDED ME WITH SO MANY EXPERIENCES FROM GOING TO WATCH A POST-MORTEM, PRESENTING EVIDENCE IN A REAL COURTROOM AND PRESENTING AT A CONFERENCE - ALL OF WHICH WERE NERVE-WRACKING BUT UNFORGETTABLE."



**TINA
KAUR**

MSci FORENSIC SCIENCE

CONNECT WITH
OUR STUDENTS



FACILITIES

MOCK COURTROOMS

Put legal theory into practice in our purpose-built and digitally-equipped mock courtrooms. Here you can experience the pressures of the court environment, whether that is giving evidence in a court of law or presenting your argument at Model NATO.

FORENSIC AND SECURITY LAB

Our Forensic Computing and Cyber Security Lab contains dual screen PCs bound within a dedicated and isolated network. Our own, in-house developed, virtual machines and environment enables several types of cyber protection to be developed and ethical hacking to take place.

INTERVIEW SUITES

Whether supporting victims of crime, interviewing suspects or collecting witness testimonies, our interview rooms are ideal for developing these key skills, as well as observing and reflecting on different interview scenarios.

CRIME SCENE HOUSE

We have a dedicated Crime Scene House fitted with CCTV and two-way audio which gives the option for both internal and external crime scenes, so you can hone your investigative and crime scene examination skills.

BALLISTICS ROOM

Our ballistics room gives students confidence in their practical skills to go into jobs such as ballistics research or firearms investigation. You will learn how to safely handle weapons, conduct test firing and ricochet analysis, and learn how to recover ammunition and pellets. You will then be equipped with the skills and knowledge to report your findings in a court of law.

BLOOD ROOM

Simulate blood shed at crime scenes in our Trauma Analysis Facility. We have two wet rooms fully equipped with all of the weapons and other equipment you will need to reconstruct different patterns found at a crime scene. You can also interpret blood spatter patterns to assist with criminal investigation and refute or support a suspects version of events.



CONNECTIONS

Studying one of the criminal justice and international relations courses at Staffordshire University means that you will be constantly connected to our teams of expert academics, who have years of experience succeeding in the careers that you might be aiming for.

Many of our courses have professional accreditation from organisations such as the Chartered Society of Forensic Sciences, or are delivered under licence from the College of Policing. We also have exciting opportunities on all courses for work placements, so you can put academic theory and knowledge into practice in real-world environments – an invaluable asset when launching your career.



CAREERS

As the world evolves, so do the challenges and opportunities within the criminal justice, civil justice and public service sectors. Graduates of our criminal justice and international relation degrees are prepared for these careers, whether it's working in the global political environment, undertaking criminal investigations or developing rehabilitation strategies for young offenders.

Our students have gone on to work at the top level within various governments, including one prime ministerial role, and others have gone on to successful roles within forensic, policing, probation and other criminal justice organisations.

CONNECT
WITH OUR
EXPERTS



"OUR REIMAGINED COURSES PUT RESEARCH AND THE FUTURE OF FORENSICS AT THE VERY CENTRE OF YOUR STUDIES. WE WANT OUR STUDENTS TO BE THE LEADERS INTERNATIONALLY IN FORENSIC THINKING AND DESIGN, THEREFORE WE HAVE BUILT COURSES THAT ALLOW FOR HANDS-ON EXPERIENCE AND CREATIVE DISCUSSION IN PARTNERSHIP WITH LECTURERS AND RESEARCHERS."



**DR DUNCAN
PARKER**

COURSE DIRECTOR
(FORENSICS)

MEET THE EXPERTS



**DR LAUREN
METCALFE**

COURSE DIRECTOR
(POLICING)



**LOUIS
MARTIN**

COURSE LEADER
(CRIMINOLOGY)



**DR TONY
CRAIG**

ASSOCIATE
PROFESSOR
(MODERN HISTORY)



**DR SIMON
SMITH**

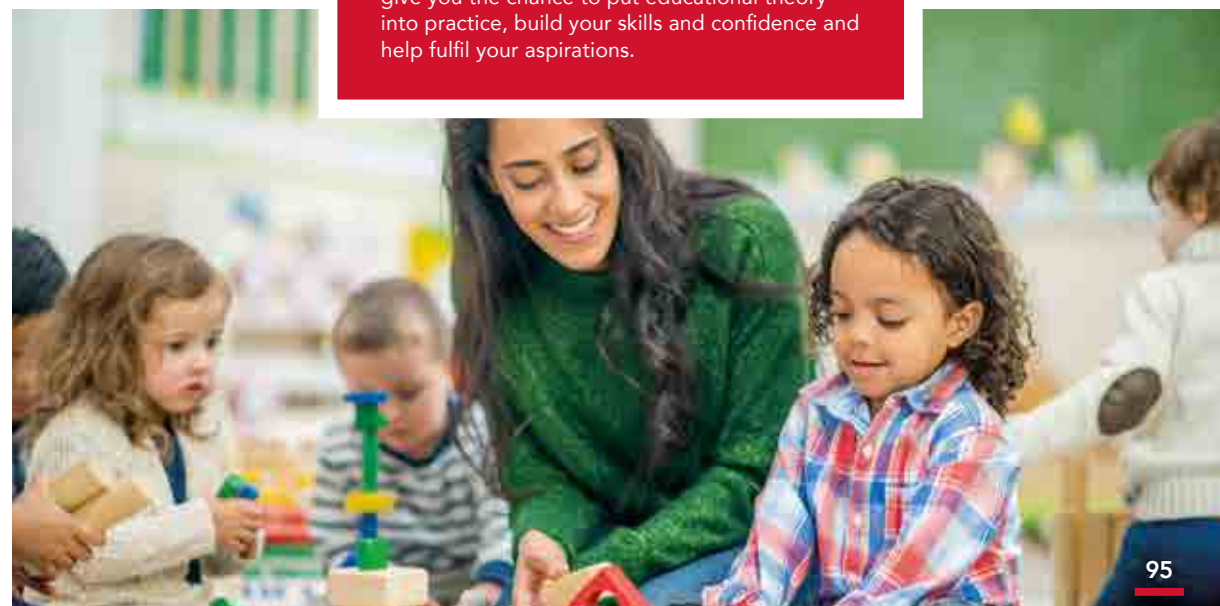
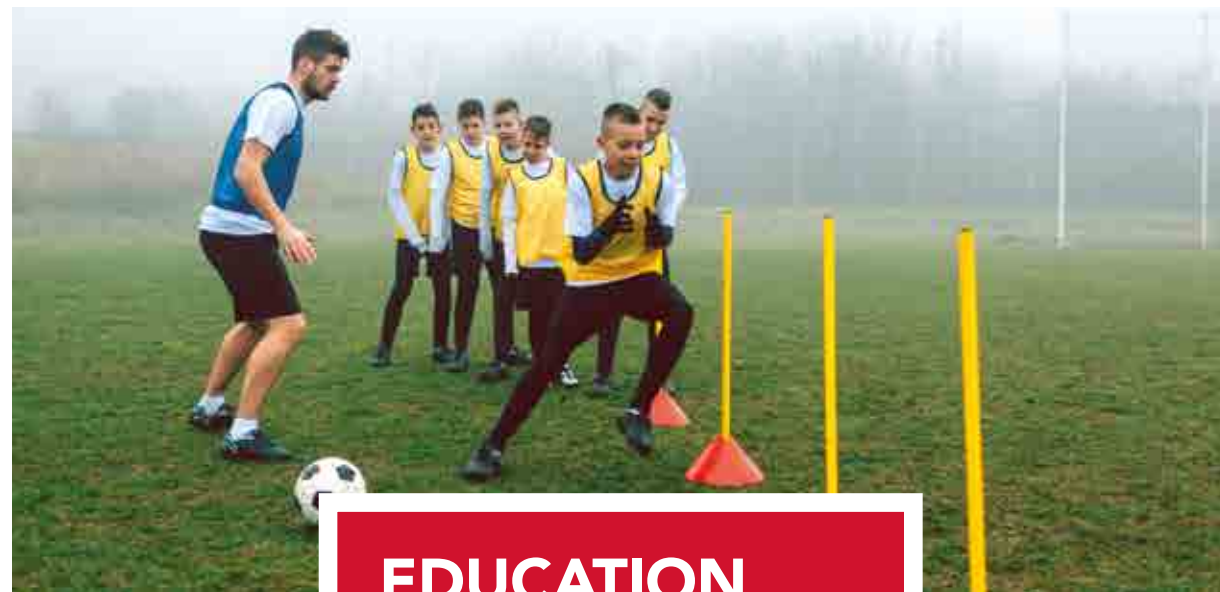
ASSOCIATE
PROFESSOR



View our
courses online



EDUCATION, CHILDREN AND TEACHING



EDUCATION, CHILDREN AND TEACHING

If you're looking to have a rewarding career working with children or young people, then Staffordshire University is the place for you.

Education courses at Staffordshire University are about more than just teaching careers – we can set you up for a variety of different futures and ensure you graduate ready and able to work in any learning environment. Our experienced academics will help you develop a holistic approach to teaching and learning, and our guaranteed work experience opportunities will give you the chance to put educational theory into practice, build your skills and confidence and help fulfil your aspirations.



Our Education portfolio offers a variety of different options, depending on your ambitions.

Primary Education Qualified Teacher Status • Early Childhood • Special Educational Needs and Disability • Education Studies

"I FEEL THAT THE COURSE STRUCTURE IS A REAL POSITIVE AT STAFFORDSHIRE UNIVERSITY; DELIVERING A SUCCESSFUL BALANCE OF UNIVERSITY SESSIONS AND SCHOOL EXPERIENCE."



ANITA SMITH

BA (Hons) PRIMARY EDUCATION WITH QTS

CONNECT WITH OUR STUDENTS



FACILITIES

NURSERY AND FOREST SCHOOL

Be inspired in our brand-new Nursery and Forest School - a sustainable place for early years learning with a connection to the immediate landscape and nature reserve. The facility houses four inspirational learning spaces enhanced with digital technology and provides work-based learning opportunities and outdoor learning modules for our students.

OUTREACH SERVICES

Get access to a range of high quality placements. We work with over 50 high performing early years settings and schools within the local area and in Birmingham, the Black Country, Shropshire, Manchester, Derbyshire and beyond.

LIBRARY RESOURCE

Get the knowledge you need to strengthen your understanding of the education environment using our range of online and offline library resources, available for students 24/7.

TEACHING SPACES

Access a variety of teaching spaces to accommodate different teaching and learning styles, ranging from big 200-seater lecture theatres to cabaret style seminar spaces for teaching in the round. As well as the above and the facilities offered on placement you will be able to practice in simulated classrooms with a full range of practical equipment needed to facilitate learning.

IT LABS

Education is run on technology in today's world. Whether it's getting to grips with giving Zoom lectures, or exploring the possibilities of digital interactivity, our IT labs will have the professional-grade facilities you need to make a difference.



CONNECTIONS



At Staffordshire University, we have established a large network of links and partnerships with schools and colleges across the region and beyond. This means that as a student with a profound interest in launching your career in the education sector, you'll be guaranteed the relevant placement and work experience you need to set you up for the future.

You might choose to complete work experience in school and college settings, or you might find your passions lie delivering education in different settings, including nurseries or at private training organisations.



CAREERS

Our Education graduates launch careers in early years, learning support, educational administration or management, community learning or safeguarding, social work, charity work, coaching, mentoring, teaching and more.

If teaching is your ambition, you can graduate from our Primary Education degree as a fully qualified teacher, ready to step into the world of work. Alternatively, you can study Education or Early Childhood Studies and progress to your PGCE teaching qualification on successful completion of your degree.



CONNECT
WITH OUR
EXPERTS



" AS A TEAM OF EXPERIENCED TEACHERS, SCHOOL LEADERS AND RESEARCHERS, WE ARE ALL PASSIONATE ABOUT EDUCATION AND LOVE SHARING OUR EXPERIENCE WITH OUR STUDENTS. OUR COURSES COMBINE THIS WITH PRACTICAL EXPERIENCE IN SCHOOLS AND OTHER PARTNERSHIP WORKPLACES TO ENABLE YOU TO DEVELOP INTO THE OUTSTANDING PRACTITIONER THAT YOU WANT TO BE."



**CATHY
RUTHERFORD**

SENIOR LECTURER
(PRIMARY EDUCATION)

MEET THE EXPERTS



**DR JIM
PUGH**

DIRECTOR OF
THE INSTITUTE
OF EDUCATION



**AMANDA
TAYLER**

LECTURER
EARLY CHILDHOOD
STUDIES



**ALYSON
JOLLEY**

LECTURER
EDUCATION
STUDIES



**DR MIKE
BURNITT**

SENIOR LECTURER
PRIMARY
EDUCATION



View our
courses online



ENGINEERING

100



ENGINEERING

Welcome to the world of engineering – one of the key subjects if you want to be a pivotal cog in the construction and development of tomorrow's world.

At Staffordshire University, we have a long heritage in providing students with the tools and expertise they need to flourish in a variety of engineering sectors, including design, mechanical, automotive, electrical and aeronautical. We combine traditional and tested methods with an innovative and forward-thinking approach to give you the best chance of making a difference in Industry 4.0, machine learning and the future of engineering.



101

Our engineering area offers future-focused courses spanning across various sectors.

**Aeronautical Engineering •
Automotive and Motorsport
Engineering • Electrical and
Electronic Engineering •
Mechanical Engineering •
AI and Robotics • Engineering
Design • General Engineering**

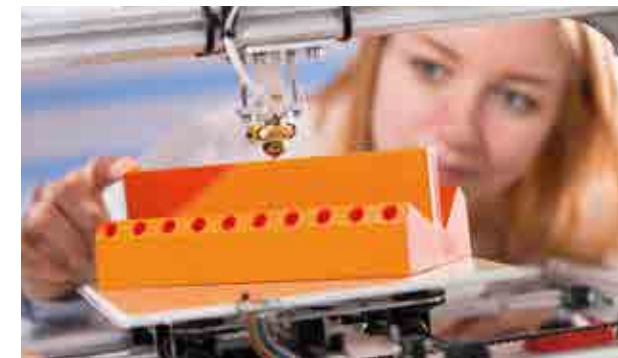
" THE GREAT THING ABOUT STAFFORDSHIRE UNIVERSITY IS NOT JUST THE COURSE, BUT THE OPPORTUNITIES THAT ARE OFFERED ALONGSIDE STUDYING. MY ADVICE TO STUDENTS IS TO TAKE EVERY OPPORTUNITY AVAILABLE IN ORDER TO ACHIEVE YOUR CAREER ASPIRATIONS."



**LAURA
DAVIES**

BSc (Hons) AERONAUTICAL
ENGINEERING

CONNECT WITH
OUR STUDENTS



FACILITIES

ENGINEERING LABS

Work in our professional standard labs, packed with state-of-the-art software and hardware resources reflecting current trends in the development of engineering and technology subjects.

THERMOFLUIDS AND AERONAUTICAL LAB

Understanding the interaction between air and objects, particularly at their surfaces, is key to the design and operation of aircraft. Facilities in this laboratory allow practical measurement which is then augmented by computer-based flow simulation and modelling.

REVERSE ENGINEERING LAB

Our Reverse Engineering Laboratory contains 3D scanning capability, additive manufacturing machines featuring PolyJet, FDM, 3DP processes, as well as laser engraving ability.

REAL-TIME LAB

Our Real-time Lab has a suite of 20, 6 axis programmable robotic arms, autonomous vehicles, micro-controllers, motors, sensors and state-of-the-art design suites for embedded software programming and electronic design.

SMART ZONE

Our £1.3m Smart Zone contains two floors of dedicated workshop space for engineering and creative students around the University, with the latest in digital technology and high-end computing facilities.

RENEWABLE ENERGY LAB

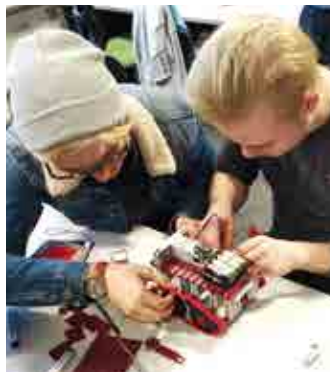
Use the latest equipment in our range of renewable energy focused laboratories, including a state-of-the-art Power Systems Lab, that provides real-time testing and development facilities for use in electrical engineering, and other areas such as the Thin Film Lab (work for plastic electronics), our wind tunnel, and our high voltage cage.



CONNECTIONS

Staffordshire University has the connections and partnerships that can take you to the next level of your career in engineering. We offer guaranteed work experience to every student to complete their well-rounded practical and theoretical education.

Work experience can be with partners that include the MoD and the RAF, or with some of our linked private companies like Bentley, Jaguar Land Rover, JCB, AstraZeneca, and more. There's not just the chance to connect with industry through work experience either, every day you will be taught by experienced professionals from industry and be given the opportunity to showcase your work at our annual GradEx show as part of your course.



CAREERS

Engineers are critical for the maintenance and evolution of our world throughout history, but arguably, they have never been more critical as they are right now.

Our courses are designed to give you the best chance to make a difference in the sector. We have successful graduates working in sectors including mechanical engineering, automotive, transport, consultancy, energy generation, electronics and aviation.



CONNECT
WITH OUR
EXPERTS



"THE FUTURE OF ENGINEERING IS IN THE HANDS OF OUR STUDENTS. THEY WILL BE THE ONES WHO INNOVATE, DEVELOP AND USE THE TECHNOLOGIES, SOME OF WHICH HAVEN'T BEEN INVENTED YET!"



**CHRIS
WAYMAN**

SENIOR LECTURER
COURSE LEADER (ENGINEERING DESIGN)

MEET THE EXPERTS



**DEBI
ROBERTS**

COURSE DIRECTOR
(TRANSPORT
ENGINEERING)



**DR EVANGELIA
GANNIARI-
PAPAGEORGIOU**

COURSE DIRECTOR
(MECHANICAL
AND GENERAL
ENGINEERING)



**KUDAKWASHE
ONIKO**

COURSE LEADER
(GENERAL
ENGINEERING)



**DR ANAS
AMJAD**

COURSE DIRECTOR
(ELECTRICAL &
ELECTRONIC
ENGINEERING)



View our
courses online



GAMES



GAMES

Study at the largest institution for
games and visual effects education
in the UK, and turn your passion
into a career.

Do you want to create the next AAA Game? If
you're interested in being part of creative teams
as a games designer, programmer, developer or
artist, or maybe as an animator or community
manager, then we have the course for you. We'll
support you to burst into the games industry
with industry level expertise and connections,
and our professional grade design, programming
and production facilities.



Our games area includes a huge variety of courses that cover the entire cycle of the video games industry.

Games Design • Games Programming • Games Development • Augmented and Virtual Realities • Animation • Games Art • Concept Art • CGI and Visual Effects • Esports • Community Management

"I HAVE BEEN ABLE TO GAIN VALUABLE INSIGHT FROM THE REGULAR INDUSTRY VISITS WHILE DISCOVERING NEW AND CREATIVE WAYS TO APPLY MY KNOWLEDGE AND EXPERIENCE."



**KRIS
KRASTEV**

BA (Hons) ESPORTS

CONNECT WITH
OUR STUDENTS



FACILITIES

EPIC GAMES LAB

Home to the Epic Games Design Centre, our lab is fully equipped with the latest software engines and computing hardware to give you a professional design and programming experience.

ESPOTS HUB

The Esports Hub houses 6x6 4k gaming rigs, dedicated commentator and presenter desks, and broadcasting facilities including a Yamaha Audio mixing desk, and industry grade studio lighting, cameras and autocue.

ANIMATION STUDIOS

Our well-equipped animation studios house a number of resources, including: Cintiq suites for 2D and 3D digital animation, a 4K edit suite, sound recording booths, access to motion capture technology, and a dual-screen PC digital suite with software including MAYA and TOON BOOM.

MOTION CAPTURE STUDIO

The Motion Capture Studio is an industry standard facility with 24 camera setup, huge space for students to record sessions and software which is powered by Vicon.

VR, AR AND MIXED REALITY LAB

Our VR, AR and Mixed Reality Lab is a creation station, equipped with a number of Vive Virtual Reality headsets, new haptic technologies, and a dedicated development area to create, develop and test VR and AR solutions for entertainment and commercial applications.

VIRTUAL PRODUCTION SUITE

Our new £300k Virtual Production Suite combines the latest digital innovations in VFX, CGI and gaming technology with traditional film and video production techniques. Large LED panels project realistic, digitally animated landscapes into a live production environment to seamlessly blend physical and virtual worlds together.



CONNECTIONS

No matter which games course you study, you'll have opportunities to build connections key to your future career. Every Games student is given free Ukie Student Membership. Meaning you get news, placements opportunities, events and jobs directly sent to you by the industry.

There are also opportunities to make connections within the University. Every year, commercial games studios such as Rockstar Games, D3t, Red Kite Games, Sumo Digital, Boss Alien and Flix Interactive are invited in to interview our students for graduate positions. As members of the PlayStation® First Academic Program run by Sony, we have access to professional development hardware and software tools. We also have a unique partnership with industry giants TeamSpeak for our esports and communities courses, allowing our students to use TeamSpeak to create seamless productions, and to manage players and broadcast crews working in remote locations around the globe.

CAREERS

Studying for a degree on one of our games courses will give you access to an entertainment industry with a bigger audience than the music and film sector combined. In this evolving industry, new and exciting games need to be more than just entertainment, they need to be adaptable, competitive, marketable and manageable – and that's where you will come in.

As a graduate, you will be following in the footsteps of our past students going off to the likes of Aardman, Naughty Dog, Playground Games, Codemasters, Framestore, Moving Picture Company and more.



CONNECT
WITH OUR
EXPERTS



"STAFFORDSHIRE UNIVERSITY HAS A LONG-ESTABLISHED REPUTATION AS A LEADING INSTITUTION FOR VIDEO GAMES SCHOLARSHIP. WE WORK CLOSELY WITH INDUSTRY TO DEVELOP AND TEACH SECTOR-LEADING COURSES THAT SUPPORT GRADUATES IN DEVELOPING THE SKILLS AND CONFIDENCE THEY NEED TO EXCEL."



**PROF. CHRIS
HEADLEAND**

HEAD OF DEPARTMENT
(GAMES DESIGN AND TECHNOLOGY)

MEET THE EXPERTS



**DR YING-YING
LAW**

SENIOR LECTURER
(ESPORTS)



**GREG
PENNINCK**

COURSE DIRECTOR
(GAMES DESIGN)



**DAVE
EDWARDS**

COURSE DIRECTOR
(GAMES ART AND
CONCEPT)



**STUART
BUTLER**

COURSE DIRECTOR
(GAMES
TECHNOLOGY)



**ALEXANDER
JACKSON**

COURSE DIRECTOR
(ANIMATION
AND VFX)



View our
courses online



HEALTH AND WELLBEING



HEALTH AND WELLBEING

Help yourself to help others with a degree in one of our health and wellbeing areas and make a difference to the generations of tomorrow.

We are specialists in what we do, combining clinical and medical work experience with expert academics that have been there in the field, and professional accreditations that can give you another level of recognition in your chosen area. So, whether you're looking to delve into one of our frontline courses in nursing, midwifery, paramedic science, operating department practice, health and social care, taking on the human mind in a psychology course, or developing future cures in the biomedical and biological sciences – you need to look no further.



Our health and wellbeing area has a variety of courses that focus on different sectors within the industry.

- Nursing • Paramedic Science**
- Midwifery • Operating Department Practice • Health and Social Care**
- Psychology • Counselling**
- Sports Therapy • Biomedical Science**



"I HAVE THOROUGHLY ENJOYED MY TIME AS WELL AS HAVING THE OPPORTUNITY TO GAIN WORK EXPERIENCE WHICH HAS PREPARED ME FOR THE REAL WORLD OF WORK."



MOTIBAL KHAN

BSc (Hons) HEALTH AND SOCIAL CARE

CONNECT WITH OUR STUDENTS



FACILITIES

CLINICAL SIMULATION SUITES

These state-of-the-art labs allow a number of clinical procedures to be simulated on mannequins, enabling students to reach a level of confidence and proficiency before carrying out procedures on real patients.

CLINICAL TRAINING FACILITIES

Our labs provide the environment for you to learn patient assessment techniques, airway management, obtaining intramuscular, intravenous and intraosseous access and advanced life-support skills.

CENTRE FOR HEALTH INNOVATION

Our £5.8m facility aims to meet modern demands and challenges in the sector, meaning that students, healthcare professionals and start-up businesses will have the chance to explore the latest medical techniques and methods.

ANALYTICAL CENTRE

Our Analytical Centre includes equipment that enables detailed analysis and understanding of compounds and metabolites of interest in the design, development and use of drugs for therapy.

HUMAN SCIENCES SUITE

The Human Sciences Suite has an impressive array of laboratory equipment for use in electroencephalographic (EEG), cardiovascular and clinical biochemistry environments.

SCIENCE CENTRE

Our £30m Science Centre contains specialist labs that delve into the areas of psychology, biomedicine, biology and more where you can practice and refine your practitioner skills.

PARAMEDIC TRAINING AMBULANCE

Paramedic students and other student clinicians who may have pre-hospital involvement can hone their skills in our very own fully kitted training ambulance.



CONNECTIONS

No matter which health and wellbeing course you study, you'll have the chance to put your skills to the test in real-world environments. Every course comes with guaranteed work experience opportunities so you can back up your study and practice with professional experience.

Change to 'Gaining experience from areas within both public and private settings, will prepare you for a career in the health and wellbeing setting. At Staffordshire University we have existing partnerships with various private companies, and a long-standing history of providing placements within the NHS Trusts, independent and voluntary sector.



CAREERS

When you're looking to enter a career in health and wellbeing, you'll often find yourself targeting a particular role or sector through your studies. So, whether you're looking to work as a nurse, bioscientist, paramedic, scientist, or psychologist – it's important that you choose the right path to advance your career.

At Staffordshire University, we have successful graduates that are actively contributing to their respective fields in places like the West Midlands Ambulance Service and NHS environments around the UK. Depending on the course you study, there are also opportunities to progress into teaching roles, research-led roles, and counselling roles.



CONNECT
WITH OUR
EXPERTS



"OUR EXPERTISE IN SIMULATION-BASED EDUCATION MATCHES OUR FIRST-CLASS FACILITIES. WE ENSURE OUR STUDENTS – THE FUTURE HEALTHCARE WORKFORCE – LEAVE US EQUIPPED THE SKILLS AND 'REAL-WORLD' EXPERIENCE THEY NEED TO BE CONFIDENT AND COMPETENT PRACTITIONERS."



**EMILY
BROWNE**

ASSOCIATE DEAN
BUSINESS AND ENTERPRISE

MEET THE EXPERTS



**GAVIN
JOHNSON**

COURSE DIRECTOR



**DR SARAH
WILLIAMS**

COURSE DIRECTOR
(BIOMEDICAL SCIENCE)



**HELEN
ASHWOOD**

COURSE DIRECTOR
(NURSING)



**DR MANI DAS
GUPTA**

SENIOR LECTURER
(PSYCHOLOGY AND
COUNSELLING)



View our
courses online



LAW



LAW

Take the law in new directions with our specially designed courses, dedicated to giving you the skills and expertise you need to practice law in professional environments.

Our Law degree comprises pathways that will enable you to prepare for admission to the Bar, an innovative career in digital law, or to take a more general route if you are not sure which area you want to specialise in. We are committed to building your expertise, whatever your future legal aspirations. With our team of expert academics, legal professionals, specialist facilities and legal connections, you will learn about and develop practical experience in the principles that govern society, preparing you for a future as a legal professional.



Our law area provides you with the pathways to practice law in a range of different environments.

Law • Digital Law • Professional Law • Bar • Legal Advice Clinic • Mooting • Criminal Law • EU Law • Legal System



" THE LECTURERS ARE ALWAYS SUPPORTIVE, AND THE TUTOR SYSTEM IS VERY EFFECTIVE. WE HAVE BEEN ABLE TO SHAPE OUR DEGREE IN THE WAY WE WANT, LEARNING THE SUBJECTS THAT INTEREST US. I WOULD HIGHLY RECOMMEND THE COURSE AND BELIEVE IT HAS SET ME UP VERY WELL FOR FUTURE."



NASEEM KHAN

LLB (HONS) LAW GRADUATE

CONNECT WITH OUR STUDENTS



FACILITIES

MOCK COURTROOMS

Put legal theory into practice in our purpose-built and digitally-equipped mock courtrooms. Here you can experience the pressures of the court environment, whether that is giving evidence in a court of law or presenting your argument at a mooting competition.

INTERVIEW SUITES

Whether interviewing clients or preparing witnesses for court, our interview rooms are ideal for developing these key skills, as well as observing and reflecting on different interview scenarios.

STAFFORDSHIRE UNIVERSITY LEGAL ADVICE CLINIC

Enabling students to gain real life experience working within the community, our law clinic offers free legal advice, on a variety of subjects, to the public and to certain specific sectors of the local community. SULAC provides Staffordshire Law students the unique opportunity to experience the process of applying law to real life situations in some truly innovative settings.

CRIME SCENE HOUSE

Experience law in a range of settings, with our Crime Scene House and Community House. Our range of facilities enable you to experience all aspects of law, whether this is social work, criminal, negligence or family law.

LIBRARY RESOURCE

You will have all the legal knowledge you need at your fingertips to find appropriate case law, both online (including Law Trove) and in our on campus libraries, available for students 24/7.

SIMULATION SUITE

Immersive learning is key to developing your practical legal skills. The state-of-the-art simulation labs allow us to run a variety of activities in different virtual environments, by projecting scenarios on to the walls. Recording equipment also provides students with the opportunity to reflect on their own performance.



CONNECTIONS

Our law courses are designed to connect you with practising and experienced professionals via guest lectures and our extensive legal networks, as well as providing opportunities to undertake work placements as part of your degree.

Not only this, we have our very own innovative and exciting legal advice clinic (Staffordshire University Legal Advice Clinic) which enables you to gain real-life experience working within the community, offering free and confidential legal advice on a variety of subjects. This will give you the chance to apply your learning and begin to help the community whilst you're still studying, and is an invaluable asset to your employability profile.

CAREERS

At Staffordshire University, we have years of experience in helping students start successful careers in law. There are a number of ways you can utilise your degree in local or national law firms, or even as part of in-house teams for larger companies or as part of HR teams.

With a degree in law from our university, you are also prepared for a postgraduate and professional legal qualification, leading on to a future as a barrister, solicitor or legal executive.

Law degrees are very well regarded, so your LLB degree will set you up for a wide range of legal and non-legal careers.



CONNECT
WITH OUR
EXPERTS



"STUDY IN A SUPPORTIVE AND FRIENDLY ENVIRONMENT, WITH LECTURERS WHO HAVE A WIDE RANGE OF ACADEMIC EXPERTISE AND PRACTITIONER EXPERIENCE, AND BECOME PART OF OUR LAW ACADEMIC COMMUNITY, WHERE WE CAN SUPPORT YOU WITH REGULAR CAREER UPDATES, ADVICE AND OPPORTUNITIES."



**ANNA
GARLAND**

UNDERGRADUATE LAW
COURSE DIRECTOR

MEET THE EXPERTS



**SAMANTHA
SPENCE**

LECTURER (LAW)



**AIDAN
FLYNN**

SENIOR
LECTURER (LAW)



**TRACEY
HORTON**

SENIOR LECTURER
(LAW) AND LEGAL
ADVICE CLINIC
MANAGER



**JOHN
MCGARRY**

SENIOR LECTURER



View our
courses online



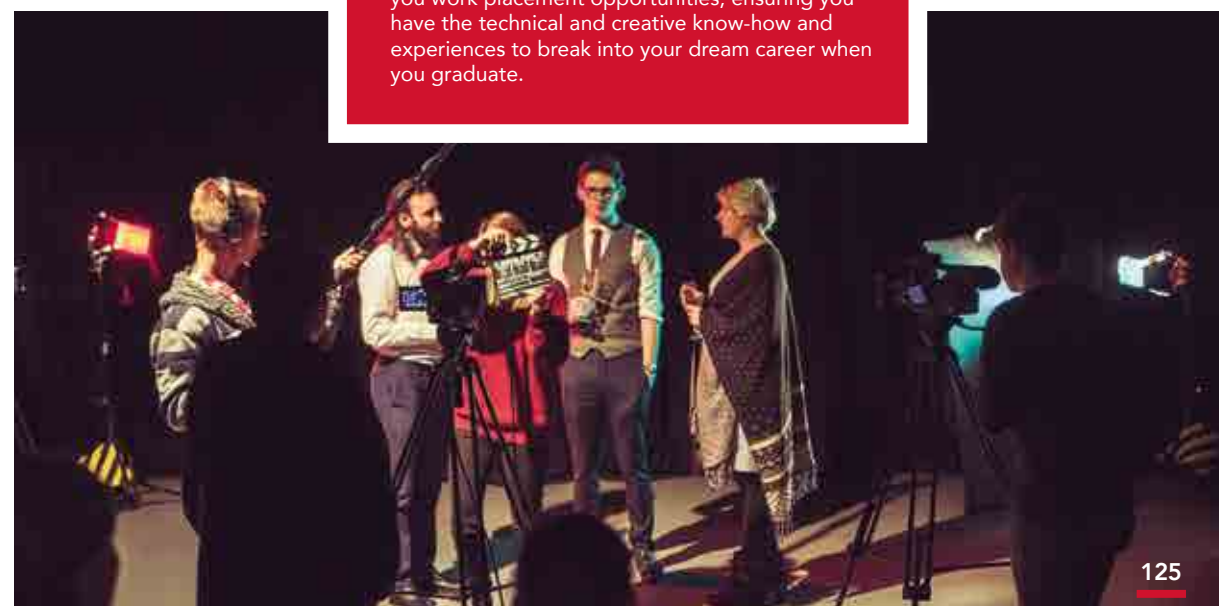
MEDIA, PERFORMANCE AND COMMUNICATION



MEDIA, PERFORMANCE AND COMMUNICATION

Media, performance and communications are becoming more important than ever in reaching audiences in both the entertainment and business sectors. Study one of the courses that suit your interests at Staffordshire University and embed yourself in a growing set of industries!

Whether you see yourself as a filmmaker, a writer, a journalist, a content creator or a musician, or even if you want to be the next actor or director, we have the course for you. All our courses are taught with industry professionals and guarantee you work placement opportunities, ensuring you have the technical and creative know-how and experiences to break into your dream career when you graduate.



Our Media, Performance and Communication area boasts a variety of courses that put you in the limelight or behind the scenes in modern day media.

- Acting • English Literature
- Creative Writing • Film and Media Production • Film, TV and Radio
- Digital Media • Journalism
- Sports Journalism • Music Production • Sound Design
- Page, Stage and Screen

"THE FACILITIES HERE ARE AMAZING. WE'RE GIVEN SUCH A WIDE SCOPE OF OPPORTUNITY TO EXPLORE DIFFERENT MUSIC."



**LORRAINE OLIVER
(LIONHEART)**

GRADUATE

CONNECT WITH
OUR STUDENTS



FACILITIES

RADIO STUDIOS

Our three professionally equipped radio studios house specialist news production and music scheduling software (Burl, Myriad) and hardware (Sonifex S2 mixing desks, ISDN units).

POST-PRODUCTION SUITES

Get to grips with over 50 industry standard editing suites designed to perfect the edit, colour and sound mixes on media productions.

VIRTUAL PRODUCTION SUITE

Our new £300k Virtual Production Suite combines the latest digital innovations in VFX, CGI and gaming technology with traditional film and video production techniques. Large LED panels project realistic, digitally animated landscapes into a live production environment to seamlessly blend physical and virtual worlds together.

MUSIC AND SOUND LABS

Two labs equipped with 50 Macs running Pro Tools, Logic, Ableton Live, Max, Adobe Creative Suite and NI Komplete, as well as an electronic music workstation with modular analogue and digital synths.

MULTI-PLATFORM NEWSROOMS

Access 76 iMacs complete with all the software necessary for multi-platform journalism, such as Adobe Creative Suite.

RECORDING STUDIOS

Including five control rooms and four live rooms, complete with a mastering facility, all fully interconnected (audio and video) and equipped with a range of industry-standard mixing consoles, surround monitoring, microphones, instruments and amplification.

PERFORMANCE CENTRE

Featuring four rehearsal studios, set and costume construction workshops, props and costume store, and a green room. Studio One, our main performance space, holds up to 70 seats and has professional stage management, lighting and sound equipment.

HDTV CENTRE

Our HDTV Centre is equipped with broadcast standard technology, green room, vision gallery and comprehensive racks room.



CONNECTIONS

Our media, performance and communication courses are practically-led, connecting you to professional-standard equipment, and giving you the ability to showcase your work to industry practitioners in conventions and what's more – every single course gives you the chance to connect with real-industry in guaranteed work experience opportunities.

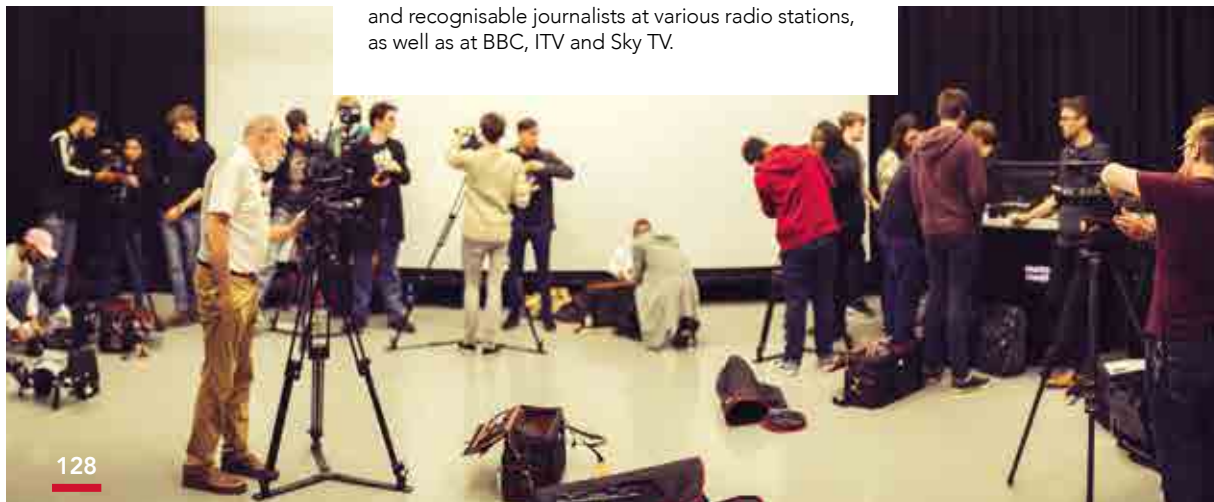
So, whether you're performing to the masses in a stage production, designing sound bites for advertising agencies, or providing match reports and insights using our established links at Sky Sports and Eurosport – you'll be able to gain invaluable experience and build your portfolio from the day one.



CAREERS

There are more careers in media, performance and communication than you can imagine. Whether you are focused on a specific area, or you just have a keen interest in a particular field, we can help you turn that passion into a successful future.

We have successful graduates that work in a variety of roles; from writers, videographers and content creators, to on-screen talent of the likes of Amit Shah, and recognisable journalists at various radio stations, as well as at BBC, ITV and Sky TV.



CONNECT
WITH OUR
EXPERTS



" OUR MEDIA, PERFORMANCE AND COMMUNICATION COURSES WILL EQUIP YOU TO BE THE VERY BEST PRACTITIONERS, ARTISTS AND CREATORS OF THE FUTURE. EACH COURSE ALLOWS YOU TO SPECIALISE IN THE AREAS OF YOUR CHOOSING, EMBRACING YOUR PERSONAL INTERESTS TO DEVELOP YOUR CRITICAL AND CREATIVE CAPABILITIES."



**DR ROB
MARSDEN**

HEAD OF DEPARTMENT - MEDIA,
PERFORMANCE AND COMMUNICATION

MEET THE EXPERTS



**PAUL
CHRISTIE**

COURSE DIRECTOR
(ACTING FOR STAGE
AND SCREEN)



**STEPHEN
GRIFFITHS**

COURSE DIRECTOR
(FILM AND MEDIA)



**STEVEN
SPEED**

COURSE LEADER
(JOURNALISM AND
DIGITAL MEDIA)



**DR MARK
BROWN**

COURSE DIRECTOR
(SOUND AND
COMMUNICATIONS)



View our
courses online



SCIENCES



SCIENCES

Do you want to lead change from the front as a researcher or active problem-solver? Our science-focused courses are perfect for the inquisitive and innovative mind and are sure to launch prosperous and fulfilling careers after graduation.

Whether you want to study the human mind, human behaviour or human performance, or become a problem solver, able to use your training, and practical experience to have an impact on your life and the lives of others, we have the course for you.



Our Sciences provision covers a whole range of different specialisms.

- Psychology • Forensics
- Paramedic • Biomedical
- Biological • Child Development • Sport Science • Pre-Med
- Criminological Psychology
- Pharmacology • Genomics
- Ecology • Infection and Immunity

"FOR ME, THE LARGE RANGE OF MODULES AND PATHWAYS AVAILABLE IS ONE OF THE BEST ASPECTS OF BIOLOGICAL SCIENCE. IT ALLOWS YOU TO CREATE A DEGREE TAILORED TO YOUR SPECIFIC SCIENTIFIC INTERESTS, OR TO EXPLORE NEW FIELDS THAT YOU MAY NOT HAVE PREVIOUSLY CONSIDERED."



BECKY SNOW

BSc (Hons) BIOLOGICAL SCIENCE

CONNECT WITH OUR STUDENTS



FACILITIES

SCIENCE CENTRE

Our £30m Science Centre is a hive of exploration, discovery and eureka moments. It contains specialist labs that delve into the areas of psychology, biomedicine, forensics, biomechanics, sports therapy, ballistics, body fluids, biology and more.

ANALYTICAL CENTRE

Our Analytical Centre includes a wealth of analytical kit that enables detailed analysis and understanding of compounds and metabolites of interest in the function and dysfunction of organisms, forensic detection and design, development and use of drugs for therapy.

HUMAN PHYSIOLOGY SUITE

This facility gives us the ability to measure the effects of different procedures on human physiological parameters using state-of-the-art equipment including extensive tools linked to body composition and strength and conditioning.

OBSERVATION AND COGNITIVE SUITE

The observation laboratory is set up with digital video cameras and microphones and is used to carry out research on focus groups, interviews, behavioural observations and presentations. The cognitive suite of laboratories is a purpose-built set of five individual testing rooms linked to a central control room and houses two eye-trackers.

NATURE RESERVE

Our Stoke-on-Trent campus is home to a dedicated Natural Heritage Nature Reserve of some 10 hectares, an area of richly diverse habitats including reed marsh, deciduous woodland and secluded pools used for teaching and research.



CONNECTIONS

Our science courses are well-connected and hold appropriate accreditations for example the Royal Society of Biology, the Chartered Society of Forensic Sciences, Institute of Biomedical Science and the British Psychological Society.

All of our students have exciting work experience opportunities, and in the past have worked at places like Cobra Biologics and Pharmaceutical Services, NHS Hospitals, and the Royal Air Force, helping to forge connections and gain experience for their future careers – plus, make a difference along the way.



CAREERS

Whatever science you're passionate about, we have the course that can take you there. Plus, selected courses in the sciences area also offer optional pathways so you can specialise in the areas you're most passionate about.

Our graduates have found success using their expertise in varied roles like microbiologists, biomedical scientists, toxicologists, psychological counsellors, clinical psychologists, forensic scientists, sports coaches, teachers, researchers, and much more!



CONNECT
WITH OUR
EXPERTS



**" WITH PURPOSE BUILT FACILITIES,
AWARD WINNING TECHNICIANS
AND SUPPORTIVE AND FRIENDLY
ACADEMICS WHO ARE EXPERTS
IN THEIR FIELDS, PSYCHOLOGY
STUDENTS AT STAFFORDSHIRE WILL
HAVE EVERYTHING THEY NEED TO
SUCCEED IN THEIR FUTURE CAREER."**



**DR EMILY
BUCKLEY**

HEAD OF DEPARTMENT
(PSYCHOLOGY)

MEET THE EXPERTS



**IAN
DAVIES**

SENIOR LECTURER
(BIOMEDICAL SCIENCE)



**DR SARAH
ROSE**

SENIOR LECTURER
(PSYCHOLOGY)



**DR JACKY
FORSYTH**

ASSOCIATE
PROFESSOR (SPORT
AND EXERCISE)



**DR DUNCAN
PARKER**

COURSE DIRECTOR
(FORENSIC SCIENCE)



View our
courses online



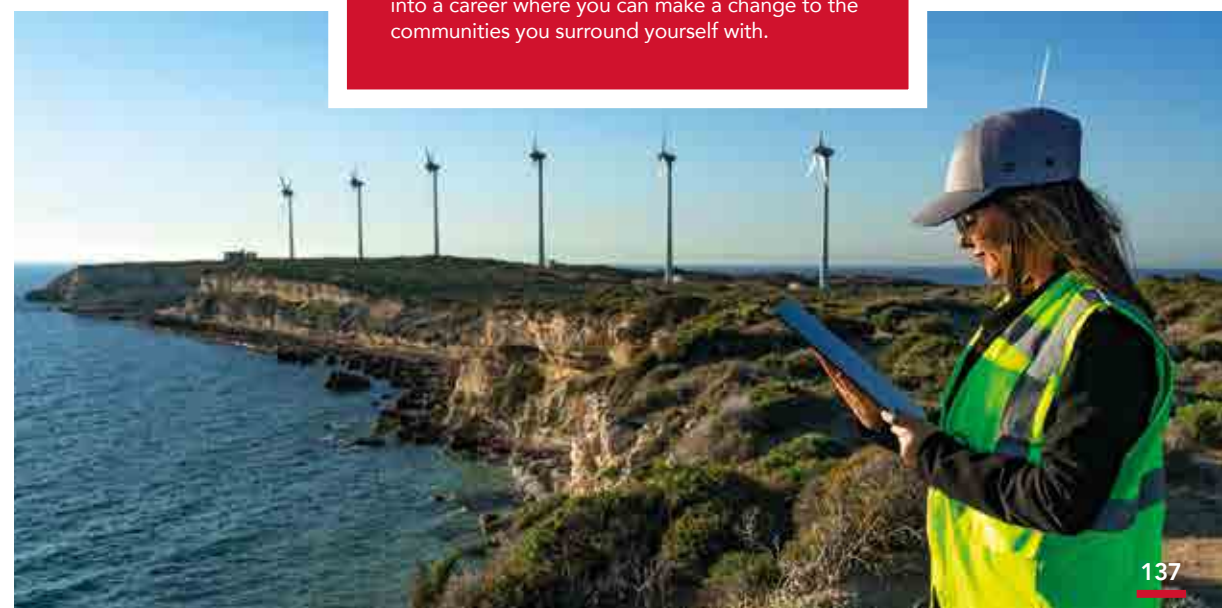
SOCIETY AND PEOPLE



SOCIETY AND PEOPLE

Are you interested in the world around you, the way people think, or the actions of individuals within and as a part of society?

At Staffordshire University, we have a variety of courses dedicated to society and people that are ideal if you want to start a career in social work, politics, psychological counselling, business management, environmental management, or criminal justice. As an institution, we have the expertise, facilities and work experience opportunities that can launch your future, developing your interest in society and people into a career where you can make a change to the communities you surround yourself with.



Our Society and People area has a huge range of courses to give you the best chance of succeeding in your future career.

Social Work • Action on Poverty and Hardship • Geography, Climate Change and Society • Working with Children, Young People and Families • Business Management and Sustainability • International Relations

"MOCK INTERVIEWS AT THE COMMUNITY HOUSE ARE SET UP AS SOMEBODY'S LIVING ROOM, IT'S COMPLETELY REALISTIC, AS IF YOU'RE IN A COMMUNITY AND YOU'VE GOT REAL SERVICE USERS WHICH MAKES IT ALL THE MORE REAL. SO, IT WAS REALLY BENEFICIAL TO GET THAT EXPERIENCE."



SHANNON HOUGHTON

SOCIAL WORK GRADUATE

CONNECT WITH
OUR STUDENTS



FACILITIES

MOCK COURTROOMS

Put legal theory into practice in our purpose-built and digitally-equipped mock courtrooms. Here you can experience the pressures of the court environment, whether that is giving evidence in a court of law or presenting your argument at Model NATO.

COUNSELLING SUITES

Our Counselling Suites are dedicated rooms perfect for practising your counselling skills or conducting interviews with research participants. The counselling sessions can be recorded and opened up for a wider audience to view.

COMMUNITY HOUSE

Our fully furnished house is used for simulated, scenario-based training. Community House includes audio and video facilities to record simulated exercises and allow detailed tutor and peer feedback.

OBSERVATION AND COGNITIVE SUITE

The observation laboratory is a large room setup with digital video cameras and microphones and is used to carry out research on focus groups, interviews, behavioural observations and presentations. The cognitive suite of laboratories is a purpose-built set of five individual testing rooms linked to a central control room and houses two eye-trackers.

NATURE RESERVE

Our Stoke-on-Trent campus is home to a dedicated Natural Heritage Nature Reserve of some 10 hectares, an area of richly diverse habitats including reed marsh, deciduous woodland and secluded pools used for teaching and research.



CONNECTIONS

All our society and people related courses are connected to industry in some way, whether it's through outstanding work placements, professionally active academics, or specially designed modules.

At Staffordshire University, we hold partnerships and connections with public organisations and private businesses that can help you take your degree to the next level, including a long-standing partnership with the West Midlands Regional Police Forces, prisons and multiple hospital and trusts within the NHS.



CAREERS

Our community focussed courses are designed to launch your future career in multiple fields. So, whether you have your sights firmly set on becoming a social worker, want to support young people and their families or you want to make an impact on the wider world giving voice to under-represented groups or taking positive action to help the environment, we can help you get there.

Graduates on our social work course find themselves with lots of employment opportunity and whilst some of our other courses in this study area are new, there is a high demand for experts in these fields to work in important roles that will make a difference to our world.



CONNECT
WITH OUR
EXPERTS



"WE'VE GOT A RANGE OF MODULES THAT COVER BOTH THE ENVIRONMENTAL BUT ALSO THE SOCIETAL ASPECTS OF CLIMATE CHANGE. THIS IS A REAL GROWTH AREA FOR JOBS."



PROF. RUTH SWETNAM

GEOGRAPHY, CLIMATE CHANGE AND SOCIETY

MEET THE EXPERTS



JULIE TIPPING

COURSE LEADER
(ACTION ON
POVERTY AND
HARDSHIP)



REBECCA FORD

COURSE DIRECTOR
(SOCIAL WORK)



DR. JANET WRIGHT

COURSE LEADER
(GEOGRAPHY,
CLIMATE CHANGE
AND SOCIETY)



DAWN LAWRENCE

COURSE LEADER
(WORKING WITH
CHILDREN, YOUNG
PEOPLE AND FAMILIES)



View our
courses online



SPORT AND EXERCISE



SPORT AND EXERCISE

Turn your passion for sport and exercise into a career with a course from Staffordshire University. There's a variety of avenues to choose from that offer great careers in the industry, from studying the science and psychology of competitors, to the more practical therapy and coaching sides, which offer experience in the field.

Our sports and exercise degrees are taught by professional academics with experience in the careers you're making strides to enter. Plus, all our courses come with guaranteed work placements and are taught in outstanding facilities that mirror training and development centres across the country – meaning when you graduate, you'll be in the best position to secure a job in your chosen field.



Our Sport and Exercise area offers courses and pathways designed to connect you with industry.

Sport and Exercise • Science
• Sports Therapy • Physical Education • Youth Sport Coaching • Sport Psychology • Coaching • Football Coaching • Performance • Athletes • Strength and Conditioning



"THE BEST PART OF STUDYING SPORTS SCIENCE AT STAFFORDSHIRE UNIVERSITY WAS GAINING HANDS-ON EXPERIENCE."



MEGAN GOODFELLOW

BSc (Hons) SPORT AND EXERCISE SCIENCE

CONNECT WITH OUR STUDENTS



FACILITIES

SPORTS PSYCHOLOGY LAB

The Basil Ashford Sports Psychology Laboratory and Consulting Room are used extensively for teaching, research and consultancy in the areas of sports psychology, exercise psychology and motor learning.

SPECIALIST SPORTS LABS

We have specialist laboratories in biomechanics, strength and conditioning, sports therapy, sports psychology, sport and exercise physiology and IT labs with specialist software such as Dartfish and Tacklesport.

SPORTS THERAPY CLINIC

Our BSc (Hons) Sports Therapy students work under the supervision of The Society of Sports Therapists accredited staff, to practice delivery of injury assessment, rehabilitation and sports massage in our Sports Therapy Clinic. This involves the use of specialist ultrasound, electrotherapy and cryotherapy machines.

BIOMECHANICS FACILITIES

The Gait Analysis Laboratory within the Biomechanics Facility consists of motion capture and associated software, force platforms, digital video camera and associated kinematic analysis software and plantar pressure measurement system. Our facilities allow for teaching, learning support and research.

SIR STANLEY MATTHEWS SPORTS CENTRE

Full of kit powered by MATRIX Fitness, our Sports Centre houses our sports hall and gym and combines technical equipment for areas such as strength and conditioning, cardiovascular and resistance training, with outside learning environments such as our 3G pitches and AstroTurf. Perfect for learning, training and recreation!



CONNECTIONS

The sport and exercise degrees at Staffordshire University are designed to connect you with industry. We have active links and partnerships with sporting organisations both in the local area and further afield with the likes of Championship football team Stoke City F.C.

Combining our connections with guaranteed work experience opportunities and a hard work ethic, you have the chance to begin your journey to a career in the sport and exercise industry.

CAREERS

During your course, you will have the opportunity to gain professional qualifications to boost your career prospects, as well as working closely with industry partners to hone your skills and enhance your employability.

Many of our courses are also accredited by industry regulatory bodies like the Society of Sports Therapists, The British Association of Sports and Exercise Sciences and The British Psychological Society. This means you will be set up, like many of our graduates, to work in sectors like sports development, coaching, teaching, sports facility management, and more!



CONNECT
WITH OUR
EXPERTS



"WE PROVIDE PRACTICAL, HANDS-ON EXPERIENCE THROUGHOUT OUR FANTASTIC COURSES, WHICH ALLOWS FOR A SMOOTH AND SUCCESSFUL TRANSITION INTO EMPLOYABILITY."



**KARLA
DREW**

SPORT AND EXERCISE

MEET THE EXPERTS



**ASHLEY
GILL**

COURSE DIRECTOR
(SPORTS COACHING)



**DR JACKY
FORSYTH**

ASSOCIATE
PROFESSOR (SPORT
AND EXERCISE)



**JAMES
CAPPER**

HEAD OF
DEPARTMENT (SPORT
AND EXERCISE)



**REBECCA
WARNETT**

COURSE LEADER
(SPORTS THERAPY)

NOTES

OUR OPEN DAYS

Do you want to be the change? Visit us at one of our Open Days in Stoke-on-Trent, Stafford or London and meet expert academics, tour our facilities, and explore the place that could be your future home.

STOKE OPEN DAYS

Stoke-on-Trent city campus

SATURDAY 11 JUNE 2022

SATURDAY 13 AUGUST 2022

SUNDAY 2 OCTOBER 2022

SATURDAY 5 NOVEMBER 2022

SATURDAY 3 DECEMBER 2022

STAFFORD OPEN DAYS

Centre for Health Innovation
Dedicated healthcare Open Days

SATURDAY 18 JUNE 2022

SUNDAY 9 OCTOBER 2022

SATURDAY 12 NOVEMBER 2022

SUNDAY 4 DECEMBER 2022

To book a place on an Open Day, visit:

www.staffs.ac.uk/opendays

LONDON OPEN DAYS

Staffordshire University London - Digital Institute

SATURDAY 11 JUNE 2022

SATURDAY 3 SEPTEMBER 2022

SATURDAY 29 OCTOBER 2022

WEDNESDAY 16 NOVEMBER 2022

WEDNESDAY 7 DECEMBER 2022

See all Open Events and book a place online:

staffslondon.ac.uk/events

Open Day dates and programmes are subject to change, please visit our websites for booking and date confirmation.

UNIVERSITY OF THE YEAR

Edufuturist Awards 2021

TOP 15 FOR TEACHING QUALITY

StudentCrowd University Awards 2021

TOP 15 FOR STUDENT SATISFACTION

Complete University Guide 2022

For more detailed information on courses
or studying at Staffordshire University visit:
www.staffs.ac.uk/undergraduate

Find us on: www.staffs.ac.uk/socialmedia



WORKING IN PARTNERSHIP WITH



hh global

Supporting woodland
creation in the UK through
carbon compensation

FOREST
CARBON