



University of
Staffordshire



HEALTHCARE AND WELLBEING

Your place
of possibility

We are delighted to announce that Staffordshire University has rebranded to become University of Staffordshire. It reinforces our commitment to Staffordshire and beyond. Our brand evolution also heralds an exciting new future, with lots of new opportunities for our students.

WELCOME TO HEALTHCARE AND WELLBEING

Want to become a nurse, paramedic, midwife, social worker or biomedical scientist? Turn possibility into reality on our career-focused courses.

Work with real human cancer tissues to see what it's like to be a cancer scientist. Help deliver a baby and check the infant from top to toe. Or deal with emergencies as part of an ambulance crew.

Whatever area you're interested in, you can make a major difference to people's lives. Our degrees are your gateway to working on the frontline of health, science or care.

Many of our healthcare and wellbeing courses include placements and real-world learning opportunities.

On campus, you'll also get hands-on using our simulation facilities, which include simulated wards, an operating theatre and training ambulance.

As an Operating Department Practice student, we'll get you to scrub up, prepare surgical equipment and help manage a manikin patient's airway. And if you study either Social Work or Working with Children, Young People and Families, you'll be using our simulated living spaces to practise interacting with clients.

With our next-level teaching and personalised learning, you'll have all the support you need to succeed.





Bringing your place
of possibility to life

THIS IS YOUR PLACE

4TH FOR CHILDREN'S NURSING

Guardian University Guide 2025

7TH FOR MIDWIFERY

Guardian University Guide 2025

NURSE EDUCATION PROVIDER OF THE YEAR

(PRE-REGISTRATION) Student Nursing Times Awards 2024
(BSc (Hons) Nursing Practice (Child) course)

TOP 10 FOR STUDENT SATISFACTION AND GRADUATE PROSPECTS FOR BIOMEDICAL SCIENCE

Complete University Guide 2025 -
Biomedical Science

PRACTICAL LEARNING

REAL-WORLD EXPERIENCE & PLACEMENTS

SECTOR-LEADING SIMMERSIVE FACILITIES

ACCREDITED COURSES INSTITUTE OF BIOMEDICAL SCIENCE, NMC, SWE AND HCPC*



* Nursing and Midwifery Council, Social Work England and Health and Care Professions Council.

WHY CHOOSE UNIVERSITY OF STAFFORDSHIRE

Find your gateway to industry
and a future full of possibilities.
An amazing community,
where amazing things happen.
All built around you.



Leading modern courses

Right from the beginning, we've been at the cutting edge of industries and driving change. Building a bridge between the classroom and real-world practice. Learn the skills for the future on our career-focused courses.

Next-level teaching

We teach in the best way, not the old way. Pushing boundaries and using hands-on, personalised learning. Championing digital innovation, from CGI to games technologies. Immerse yourself in our simulation spaces, taking you from crime scene to courtroom or ambulance to operating theatre.

Personalised support

Get all the support you need to achieve real success. Whether you have a worry about money, your studies, your mental health or a personal issue, we're here for you every step of the way.

Gateway to careers

With our unique industry connections, you'll unlock your potential. Unleash your entrepreneurial skills as you take on projects, explore placements or exhibit your work at shows, and gain the skills for whatever comes next. You can even become a student consultant, marketing your expertise to employers.

Inclusive community

Become part of our open, inclusive and welcoming community. An environment that's big on personality and full of character. A place where you'll feel empowered and inspired. Where everyone is valued and you can be you.

FACILITIES



CLINICAL SIMULATION SUITES

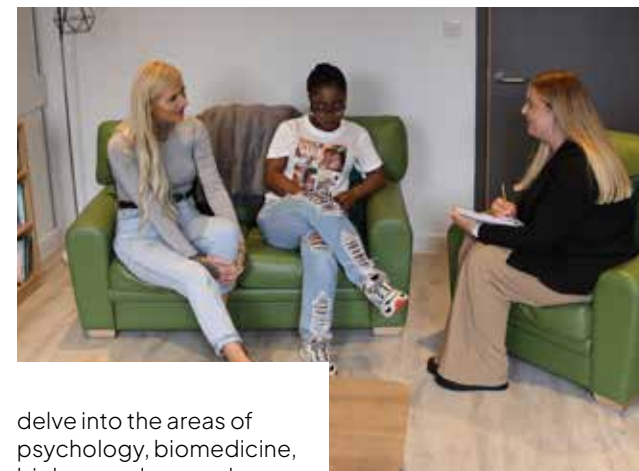
These state-of-the-art facilities allow a number of clinical procedures to be simulated on manikins, enabling students to safely experience real-life scenarios and reach a level of confidence and proficiency before carrying out procedures on real patients.

IMMERSIVE AND SIMULATED LIVING SPACES

We have invested in new simulated living spaces including a bedsit, bedrooms and living rooms for you to practise scenarios in a safe environment. They are equipped with recording technology to allow detailed feedback.

SCIENCE CENTRE

Our £30m Science Centre is a hive of exploration, discovery and eureka moments. It contains specialist labs that



delve into the areas of psychology, biomedicine, biology and more where you can practise and refine your practitioner skills.

CLINICAL TRAINING FACILITIES

Our labs provide the environment for you to learn fundamental skills that you will need to deliver high quality care in your future role of pre-hospital care. This includes advanced patient assessment techniques, airway management, obtaining intramuscular, intravenous and intraosseous access and advanced life support skills.

CELL CULTURE FACILITY

A specialist environment for the culture and study of both cancerous and

non-cancerous human and mammalian cell lines. The facility is used by students to culture cell lines in vitro in dedicated incubators providing environmental conditions as close to the human or mammalian body as possible.

SEQUENCING HUB AND ROOM

Specialist hub for performing molecular biology laboratory techniques. Facilities for genetic and gene expression analysis, cellular imaging and growth of eukaryotic and prokaryotic cells.



**TAKE A
VIRTUAL
CAMPUS
TOUR**





CENTRE FOR HEALTH INNOVATION

As a healthcare student, you'll be using some of the best immersive education facilities in the UK at our £5.8m Centre for Health Innovation*.

The provision has transformed the way we deliver health-related courses to more than 2,000 students. You'll be able to practise procedures in a safe environment before going into real clinical settings.

These facilities include a giant immersive space where incredibly realistic backdrops are projected onto a floor-to-ceiling space. You can be placed at the scene of a road accident, with passing cars, street lights and noise. You can even extricate a casualty from a vehicle parked inside the room.

We also use other simulated environments to bring your training to life, including a hospital ward, operating theatre and

emergency department. If you're a paramedic student, you'll develop your skills in our training ambulance too.

You can follow a patient's journey, using lifelike manikins as you practise your bedside manner and care. The interactive models are controlled via tablets and can breathe, show a pulse, contract their eye pupils and move joints.

You'll also be taught by academics who are up-to-date with the latest practice and come from a variety of specialist backgrounds. The centre forms part of our ambitious plans to train the future healthcare workforce and place the patient safety agenda at the heart of our courses.

**Courses at our Stafford campus include Nursing, Midwifery, Paramedic Science and Operating Department Practice. All other Healthcare and Wellbeing courses are run at our main Stoke-on-Trent campus, while our popular Adult Nursing degree is offered at both locations.*

OUR SIMULATION-BASED LEARNING APPROACH

The School of Health, Education, Policing and Sciences has two world-class simulation facilities, one at the Stoke-on-Trent campus and one at Stafford Centre for Health Innovation.

In these facilities, learners can practice the skills and knowledge gained from their individual modules and programmes to help them achieve their personal and professional goals, supported by the academic and technical teams.

Technology is used to enhance the experience and ranges from interactive manikins, virtual reality, and immersive rooms to create real-world environments within a safe setting. Simulation-based education may be used for teaching and learning, assessment and piloting new approaches. You as learners are part of this whilst studying with University of Staffordshire.

The School uses the term **Simmersive** to describe this experiential-based learning, and it's delivered via five key elements:

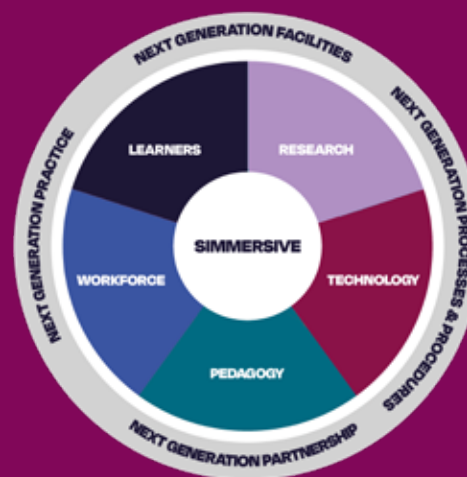
1 Pedagogy (the art and science of teaching) – ensuring a consistent and high-quality standard of teaching and learning in line with international best practice. University of Staffordshire was the first University in Europe to be endorsed by a global simulation society.

2 Research – contributing to the general evidence base in simulation and immersive environments as well as establishing an evidence base for Simmersive as a pedagogical approach in itself.

3 Workforce – committing to the development of all staff in the pursuit of consistent and high-quality standards.

4 Learners – establishing expectations and providing an appropriate learning environment to facilitate success.

5 Technology – providing access to relevant and quality hardware and software to deliver learning outcomes in the most effective way.



**TAKE A
VIRTUAL
CAMPUS
TOUR**





HEALTHCARE CAREERS

All our health and care courses offer rewarding and varied career opportunities. You could be working on the frontline with patients or service users, making a positive impact on their daily lives.

Alternatively, you could be working behind the scenes on the science behind medicine or on public health and policy decisions.

What's more, with further study, you could progress into senior roles within organisations such as the NHS, government, private sector or charities. Many of our courses are accredited,

preparing you for specific standards required for certain professions such as biomedical science, midwifery, nursing, operating department practice, paramedic science and social work.

Our other courses incorporate communication skill development, practical learning and work experience to prepare you for a wider range of opportunities.

INDUSTRY RECOGNISED AND ACCREDITED COURSES

Health and Care Professions Council (HCPC)

- Operating Department Practice
- Paramedic Science

Institute of Biomedical Science

- Biomedical Science

Nursing and Midwifery Council (NMC)

- Midwifery
- Nursing Practice (Adult)
- Nursing Practice (Child)
- Nursing Practice (Mental Health)

Social Work England (SWE)

- Social Work

hcpc health & care
professions
council



nmc
Nursing &
Midwifery
Council

Social
Work
England

OUR STUDENTS

“ **The university works very closely with different placement areas and provided a great combination of experiences for me towards my transition to becoming a registered nurse.** ”



Amy Basford

Nursing Practice, Adult

“ **The lecturers are more like colleagues. They don't talk down to you. They are sharing their experience.** ”



Julie Brown

Operating Department Practice

MEET THE EXPERTS



**DR TRUST
DIYA**

Course Leader
Biomedical
Science

Trust is a registered biomedical scientist whose core discipline is histology and cytology. He has a rich teaching background and strives to build a learning and research community of practice where students can achieve their best. His main research interest is lipidomics and nutrition with a focus on the effects of flavonoids on adipogenesis.



**REBECCA
BARTON**

Course Leader For
Nursing Practice
(Adult) – Stafford

Rebecca is enthusiastic about promoting a high standard of holistic care provision to all patients. This fuelled her move from nursing in a clinical environment, to academia and teaching. Rebecca has a specialist interest in complex care, tissue viability, palliative and end of life care. The breadth of her experience enables her to provide nursing students with 'real-life' examples of holistic care.



JILLIAN SALT

Course Leader
Health And
Social Care

Jillian's expertise centres mainly on teaching and she has been a teacher in secondary and further education prior to joining University of Staffordshire. Her expertise lies in the teaching of anatomy and physiology but also the structure of the health and social care sector, political influences and contemporary issues.



**REBECCA
BODEN**

Course Leader
Children's Nursing

Rebecca has a wide range of general paediatrics experience within acute clinical settings. She's cared for children with a range of medical, surgical and orthopaedic conditions, as well as working in high dependency care before working as a children's oncology specialist nurse. Her current interests include developing online learning strategies.



**DONNA
DOHERTY**

Course Leader,
Mental Health
Nursing

Donna is the course leader for the mental health nursing degree. She is a dual qualified General (Adult) and Mental Health Nurse. Donna has been a senior staff nurse in dementia assessment and worked as a ward sister on continuing care, she also studied a postgraduate Degree in Gerontology. She's held several teaching positions, helping nursing students gain the skills they need.



**KEELY
SHIRES**

Course Leader,
Midwifery

Keely began her career as a rotational midwife, gaining experience in all aspects of midwifery care, including antenatal, intrapartum and postnatal care. She's worked with women from diverse backgrounds with varying healthcare needs. She joined the PROMPT team, where she taught midwives, obstetricians, maternity support workers, and students. Her journey continued as an educational link within the trust, leading her to join the team at University of Staffordshire.



**SARAH
POSTLES**

Course Leader
Paramedic Science

With over 20 years' practice experience, Sarah has a keen interest in the development of the profession. She has worked as both a solo responder and crew, a mentor for students and an operational manager for larger scale incidents. Sarah has also worked as an advanced clinical practitioner in an emergency department, fuelling her interest for enlightening students to look at the roles they may be able to go on to.



**JENNIFER
BATE**

Course Leader
For Nursing
Practice (Adult)
Stoke-On-Trent

Jennifer qualified as a registered nurse in 2003, initially working in acute medicine and subsequently specialising in infection prevention and control with experience of working in acute, community and commissioning organisations. Jennifer is passionate about preventing healthcare associated infection, antimicrobial stewardship, and patient safety. She ensures these aspects are included in learning through simulation.



**REBECCA
WRIGHT**

Course Leader
For Operating
Department
Practice

After graduating in Operating Department Practice at the University in 2010, Rebecca has worked at several hospitals across the West Midlands in both the NHS and private sector covering various roles within the operating theatre, including Urology Theatre Lead, Gynaecology Theatre Lead/Deputy Theatre Co-Ordinator alongside being a practice educator for learners.



**REBECCA
FORD**

Course Director

Having had 15 years' experience in direct practice with children and families involved with statutory services, Rebecca moved into academia several years ago and joined University of Staffordshire. She has a range of areas of expertise including, social work with children and families, safeguarding and working with older children, looked after children and young people leaving care, social work law with children and families and social work practice education.



IAN DAVIES

Associate
Professor,
Biomedical
Science

In 2023 Ian was awarded the prestigious UK Advancing Healthcare Award of "Biomedical Scientist of the Year" for his national profile of leading innovative education and practice development in Biomedical Science. Before working in academia, Ian worked in the NHS for 20 years including roles such as lead biomedical scientist and operational manager.



OUR COURSES

COURSES AT OUR STOKE-ON-TRENT CAMPUS

Course title	Award	UCAS Code	UCAS Offer	Duration in years
Biomedical Science	BSc(Hons)	B900	112-120	3
Biomedical Science	MSci	C900	120-128	4
Biomedical Science (with foundation year)	BSc(Hons)	B908	48	4
Biomedical Science (with placement year)	BSc(Hons)	B901	112-120	4
Health and Social Care	BSc(Hons)	L512	96-112	3
Health and Social Care (with foundation year)	BSc(Hons)	L516	48	4
Nursing Practice (Adult)	BSc(Hons)	B744	112-120	3
Social Work	BA(Hons)	L500	112-120	3

COURSES AT OUR STAFFORD CENTRE FOR HEALTH INNOVATION

Course title	Award	UCAS Code	UCAS Offer	Duration in years
Midwifery	BMid	B720	128	3
Nursing Practice (Adult)	BSc(Hons)	B742	112-120	3
Nursing Practice (Child)	BSc(Hons)	B731	112-120	3
Nursing Practice (Mental Health)	BSc(Hons)	B760	112-120	3
Operating Department Practice	BSc(Hons)	B902	112-120	3
Paramedic Science	BSc(Hons)	B780	112-120	3





BIOMEDICAL SCIENCE

Biomedical scientists are leading the fight against disease and their work touches on the lives of virtually everyone in the UK. Now's your chance to make a difference by joining the scientists who are winning the battle against global health challenges.

ACCREDITED BY



**TOP 10 FOR
STUDENT
SATISFACTION
AND GRADUATE
PROSPECTS**

Complete University Guide
2025 - Biomedical Science



**FIND OUT
MORE ABOUT
THE COURSE
HERE**



Why choose us...

- Guaranteed work placement with local, regional and national employers. Choose your dream placement with support from our staff.
- Practical and applied learning combines with field trips and real-world challenges to give you plenty of opportunities to put skills and knowledge into action. You'll develop skills that are highly sought after by employers.
- Become part of an active research community and work with experts on live projects. From day one on the course, you'll be treated as a university scientist and not just a student.
- £30m Science Centre with fantastic facilities, including dedicated bioscience labs, specialist cell culture facilities and an analytical centre.
- Strong links with industry, including the prestigious companies at Alderley Park in Cheshire, the UK's largest single site life science campus.
- We were awarded Best Educational Institution in the Institute of Biomedical Science Awards 2024

What you'll learn...

You'll cover the principles of biological and biomedical medicine, address biology and diagnosis of disease and focus on training through clinically based modules. In year 3, you'll conduct your own independent piece of research.

Module examples:

- Global issues and professional development
- Genetics and diversity
- Molecular and cellular biology
- Practical skills for life scientists
- Interventions and disease management

What you could do next...

Many of our graduates find work within the NHS - beginning as medical laboratory assistants and progressing to biomedical scientist roles. Common employment routes include specialised areas such as the Blood Transfusion Service, microbiology, immunology and clinical biochemistry, working in either NHS, governmental or private laboratories.



HEALTH AND SOCIAL CARE

Help some of the most vulnerable people in society by becoming a health and social care professional. You can tailor the course to your career goals, whether you want to specialise in public health, caring for the elderly or supporting young people and families. You'll also get plenty of practical experience.



**FIND OUT
MORE ABOUT
THE COURSE
HERE**



Why choose us...

- Teaching is multidisciplinary and research-led, delivered by knowledgeable lecturers with extensive sector experience. They will help you relate study topics to current policy and practice.
- Complement your classroom-based studies with work experience placements within various health and social care organisations. We'll support you in finding your placements in an area you aspire to work in.
- Tailor your learning and choose your specialism that's in line with your career goals and aspirations. From public health or caring for the elderly through to supporting young people and families.
- Access state-of-the-art simulation facilities to enhance your learning, such as our living spaces, equipped with video and audio recording technology, allowing you to experience real-life scenarios and hone your client interaction skills.
- Complete a research project in your final year on a topic of your choice.

What you'll learn...

Explore a range of health and social care topics and issues, including human development, health policy, the structure of the NHS, research and leadership, all underpinned by current practice and cutting-edge research. Employability skills are embedded throughout the course, with a clear focus on how studies can be applied within the workplace.

Module examples:

- Youth Crime and Criminal Justice, Alcohol and Substance Use
- Human Growth and Development
- Leadership and Management
- Understanding Health and Social Care Organisations

What you could do next...

Our graduates go into various rewarding careers in the public, private and voluntary sectors. Many support the elderly, children, people with drug and alcohol dependency, mental health issues or disabilities. Other careers include strategic or managerial roles, including hospital management or health policy development.



MIDWIFERY

Want a career where you can make a difference every day? As a midwife, you'll follow a mother and baby's journey and support them every step of the way. It's not just about delivering babies as you'll also promote nurturing environments to help infants thrive. You'll provide family-centred care in homes, hospitals and communities.

ACCREDITED BY



7TH FOR
MIDWIFERY

Guardian University
Guide 2025



FIND OUT
MORE ABOUT
THE COURSE
HERE



Why choose us...

- Our course has been updated to reflect current midwifery standards and practices, it is approved by the Nursing and Midwifery Council (NMC); a professionally recognised accreditation that enables you to register as a midwife upon graduation.
- Hone your skills in the safe, controlled environments at our Centre for Health Innovation – the dedicated midwifery skills lab is equipped with a state-of-the-art birthing woman and newborn mannequins.
- Learn from an expert team of qualified, registered midwives with a wealth of experience in clinical practice, who'll bring your learning to life using the most up-to-date skills and technologies.
- Spend around half of your study time in practice learning placements across a range of healthcare settings within our partner NHS trusts and independent providers across Cheshire, Staffordshire, Shropshire, Derbyshire and the West Midlands.

What you'll learn...

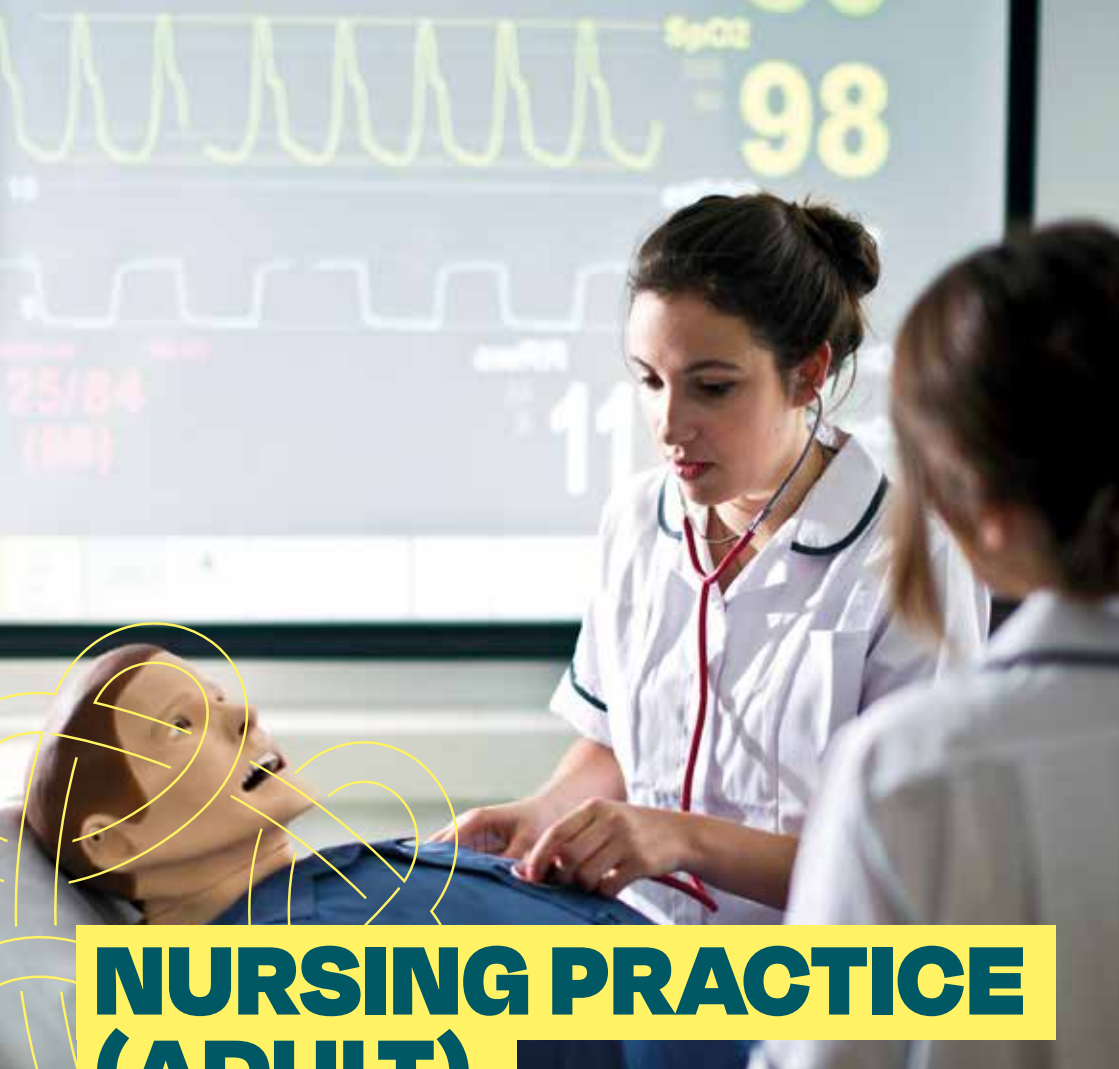
Midwifery is a career that requires lifelong learning in a dynamic healthcare system and this course will provide a foundation for your professional midwifery practice. Our course maximises opportunities for students to learn from various health professions and learn together in a multi-professional environment.

Module examples:

- Being an accountable, autonomous, professional
- Safe and effective care
- Universal and additional care for women and newborn infants
- Promoting excellence as a colleague, scholar and leader
- Clinical midwifery skills

What you could do next...

We foster a lifelong learning environment that prepares you to deliver high-quality, family-centred care. Upon successful completion of this course, you will be eligible to apply to register as an NMC registered Midwife. You could work in hospital or private settings and continue your learning into different specialisms.



NURSING PRACTICE (ADULT)

Our Adult Nursing Practice course opens up a range of exciting and rewarding career opportunities working as a caring, committed, competent and compassionate healthcare professional. Gain the essential skills and qualities needed to plan and deliver care for individuals when they need your support most.

ACCREDITED BY



FIND OUT
MORE ABOUT
THE COURSE
HERE



Why choose us...

- Our course meets the Nursing and Midwifery Council (NMC) standards, an internationally recognised accreditation that enables you to register as an adult nurse upon successful completion.
- Hone your skills in the safe, controlled environment of our cutting-edge simulation and immersive facilities, including: simulation suites, immersive room and clinical skills laboratories
- Opportunity to study at our main campus in Stoke-on-Trent or our Centre for Health Innovation in Stafford.
- Learn from an expert team of registered nurses with a wealth of experience in clinical practice, who will bring your learning to life using the most up-to-date skills and technologies.
- Access a wide range of practice learning placements, where you'll spend around half your study time. You will grow your skills in a variety of areas of adult nursing and put your skills into practice with real patients.

What you'll learn...

Develop the essential skills needed to deliver safe clinical care, integrating theory and practice through learning placements and simulation based exercises. The curriculum covers topics such as human factors, ergonomics and patient safety. Learning is focused on evidenced-based, value-driven philosophy working independently and as part of a team.

Module examples:

- Mental Health and Physical Health Through the Lifespan
- Professional, Legal and Ethical Considerations
- Adult Nursing Practice

What you could do next...

Typical adult nursing roles including becoming a staff nurse in an acute hospital or community setting, or a specialist practitioner in areas such as intensive care, sexual health, long-term condition management or older adult care. There are lots of opportunities for further study to progress your career.



NURSING PRACTICE (CHILD)

Gain the essential skills and experience to become a children's nurse through our award-winning degree. Our nurturing approach will help you find your niche. And from day one, you'll focus on children's nursing and family-centred care, giving you a firm foundation for your future career.

ACCREDITED BY



**4TH FOR
CHILDREN'S
NURSING**

Guardian University
Guide 2025



**FIND OUT
MORE ABOUT
THE COURSE
HERE**



Why choose us...

- Our course meets the Nursing and Midwifery Council (NMC) standards, an internationally recognised accreditation that enables you to register as a children's nurse upon successful completion.
- Hone your skills in the safe, controlled environment of our cutting-edge simulation and immersive facilities, including: simulation suites, immersive room and clinical skills laboratories at our £5.8m Centre for Health Innovation.
- Learn from an expert team of registered nurses with a wealth of experience in clinical practice, who will bring your learning to life using the most up-to-date skills and technologies.
- Access a wide range of practice learning placements, where you'll spend around half your study time. You will grow your skills in a variety of areas of children's nursing and put your skills in to practice with real patients.

What you'll learn...

You will develop essential skills, values, attitudes and behaviours for professional practice. Experience inter-professional education and simulated learning and undertake an elective placement in an area of your choice. You'll focus on evidence-based, value-driven practice both independently and as part of a team.

Module examples:

- Children and Young People's Nursing Care
- Mental Health and Physical Health Through the Lifespan
- Physical Assessment and Preparation for Prescribing

What you could do next...

Graduates specialising in children's nursing include those working within internationally renowned children's hospitals, as well as NHS settings and private settings. You could also undertake further study to help progress in your career into management or specialist roles.



NURSING PRACTICE (MENTAL HEALTH)

Learn the professional skills to make a difference to people's lives and support them through significant mental health challenges. We'll equip you with the proficiencies and confidence to help patients cope with issues like depression, psychosis, trauma and dementia. You'll cover a range of interventions and therapies.

ACCREDITED BY



**8TH FOR
MENTAL
HEALTH
NURSING**

Guardian University
Guide 2024



**FIND OUT
MORE ABOUT
THE COURSE
HERE**



Why choose us...

- Our course meets the Nursing and Midwifery Council (NMC) standards, an internationally recognised accreditation that enables you to register as a mental health nurse upon successful completion.
- Hone your skills in the safe, controlled environment of our cutting-edge simulation and immersive facilities, including: simulation suites, immersive room and clinical skills laboratories at our £5.8m Centre for Health Innovation.
- Learn from an expert team of registered nurses with a wealth of experience in clinical practice, who will bring your learning to life using the most up-to-date skills and technologies.
- Access a wide range of practice learning placements, where you'll spend around half your study time. You will grow your skills in a variety of areas of mental health nursing and put your skills in to practice with real patients in different environments.



What you'll learn...

Develop an understanding of a wide range of mental health issues and become skilled in a variety of ways responding to mental disorder. You will gain practical experience working with patients as well as developing your confidence in simulated scenarios before going out in to practice.

Module examples:

- Mental Health and Physical Health Through the Lifespan
- Mental Health Nursing in Practice
- Professional, Legal and Ethical Considerations

What you could do next...

Our close links with mental health trusts mean most students specialising in mental health nursing line up jobs for straight after graduation. They could be working for community, inpatient, charities and specialist services. With further education, you could also progress your career into management roles.



OPERATING DEPARTMENT PRACTICE

Learn how to play a major role in patient operations as they go under anaesthetic through to their recovery. Our Operating Department Practice degree will prepare you for a career as part of a hospital theatre team. The role is varied with lots of career opportunities in different areas of the hospital setting.

ACCREDITED BY



FIND OUT
MORE ABOUT
THE COURSE
HERE



Why choose us...

- On campus, you'll be based at our £5.8m Centre for Health Innovation, where we offer some of the best immersive education facilities in the UK including VR backdrops and a simulated operating theatre. Hone your skills in a safe environment.
- Gain practical experience as you spend around half your time on placement working alongside surgeons, anaesthetists and nurses covering everything from basic care to managing emergency situations.
- Learn from our expert teaching team with industry expertise and knowledge to bring you the most up-to-date skills, techniques and technologies.
- Our course structures your studies within the context of professional practice to give you the hands-on experience and skills you need to deliver essential care in the operating theatre.

What you'll learn...

Our innovative course structure links theory to practice, allowing you to apply what you learn, working alongside surgeons, anaesthetists, nurses and other healthcare professionals to cover everything from basic care to emergency situations.

Module examples:

- Professional Context of the Operating Department Practitioner
- Clinical Practice, Wellbeing and Simulation
- Post-Anaesthetic Care and Advanced Pharmacology
- Enhancing Operating Department Practice and Emergency Care
- Leadership and Service Development

What you could do next...

Operating Department Practitioners provide skilled care and support to patients in the anaesthetic care, surgery and recovery phases. Our graduates provide services in operating departments and associated areas such as resuscitation, intensive care or emergency departments. ODPs can progress to become managers or specialise in various areas.



PARAMEDIC SCIENCE

Gain the vital skills to become a paramedic and help save lives every day. You'll spend up to a third of your time on placements, dealing with real-life emergencies. You'll also practise treating patients using our simulation facilities and will get the chance to take part in large-scale exercises.

ACCREDITED BY



FIND OUT
MORE ABOUT
THE COURSE
HERE



Why choose us...

- Our course is accredited by the Health and Care Professions Council (HCPC) meaning upon successful completion you can apply to become a registered paramedic.
- Learn in our cutting-edge simulation facilities at our £5.8m Centre for Health Innovation, including a fully functioning training ambulance and immersive room with projections of scenarios and incidents to practice your skills in a realistic but safe environment.
- Placement opportunities including a partnership with West Midlands Ambulance Service where you'll be doing shifts alongside experienced paramedics.
- Learn from our expert team of teaching practitioners with industry expertise and knowledge, who will bring your learning to life using the most up-to-date skills, techniques and technologies.
- Take part in large-scale, multidisciplinary simulation days alongside nursing students, working as teams to treat patients.

What you'll learn...

Our Paramedic Science degree will teach you the lifesaving skills to provide on-the-ground care to patients. As we follow the College of Paramedic's guidance, you'll also cover physical, behavioural and life sciences, social health, ethics and law and evidence based and research practice.

Module examples:

- Principles of Patient Safety and Paramedic Practice
- Applied Clinical Skills
- Prehospital Trauma Care & Incident Management

What you could do next...

The HCPC registration means our graduates can apply for jobs within any NHS or private pre-hospital organisations. They will typically gain employment with NHS ambulance trusts and private providers. They start off in generalist roles as paramedics, but with at least two years' experience as a registered paramedic, you can take on a more specialist role.



SOCIAL WORK

Make a difference to the lives of vulnerable individuals and families by becoming a social worker. We'll equip you with the skills to support both children and adults. As the course is regulated by Social Work England, you'll gain the professionally recognised qualification you need to succeed.

ACCREDITED BY



**FIND OUT
MORE ABOUT
THE COURSE
HERE**



Why choose us...

- Our course is approved and regulated by Social Work England (SWE).
- Learn using bespoke immersive and simulation facilities for example, our simulated living spaces, equipped with video and audio recording technology, allowing students to experience real-life scenarios and hone their client interaction skills.
- The teaching team at University of Staffordshire are qualified and experienced social workers with a diverse range of backgrounds and experience in specialty areas, who can help you relate your study topics to current policy and practice.
- Access to excellent practice learning placement opportunities, allowing you to implement your knowledge across all areas of social work, boosting your work experience and employability.
- Transferable skills are embedded throughout the course, with a clear focus on how your learning can be applied for your future career.

What you'll learn...

Our curriculum spans both children and young people's and adults' social work. You'll grow your skills and knowledge across areas such as safeguarding, community and therapeutic services. Learn how to effectively support a wide range of demographic groups and help them to achieve positive change in their lives.

Module examples:

- Evidence Informed Practice in Mental Health
- Working with Risk and Complexity
- Preparation for Practice
- Sociology for Social Work

What you could do next...

Our graduates have an excellent employability rate upon completion of the course, with many of them gaining employment with our placement providers. The course will prepare you for a career in social work across a diverse range of social welfare settings.



APPRENTICESHIPS WITH UNIVERSITY OF STAFFORDSHIRE

Our apprenticeship courses allow you to gain a qualification and earn while you learn, as your employer will cover your tuition fees. As an apprentice, every day will be different – you'll have the unique opportunity to learn in varied environments, giving you both the practical and theoretical knowledge to become an expert in your field.



**FIND OUT
MORE ABOUT
THE COURSE
HERE**



NURSING ASSOCIATE

Level 5

This apprenticeship has been developed by University of Staffordshire to cater for the role of nursing associate which was introduced to help ensure continued high quality care within the health environment.

The apprenticeship recognises, develops and maximises the talents of staff, building on these to produce highly trained nursing associates that are job-ready and meet the standards for registration with the Nursing and Midwifery Council. The nursing associate is a new role created in response to political initiatives to continually improve the way care is delivered. The training is primarily aimed at staff who are currently providing care to patients and their relatives across the care sector and want to progress and become better equipped to deliver high quality care.

On successful completion of the programme, the following qualification will be awarded: Level 5 Foundation Degree.

REGISTERED NURSE

Integrated Degree Apprenticeship – Level 6

The purpose of this apprenticeship is to both prepare you for entry to the professional Nursing Register and to award you an academic qualification commensurate with your learning outcomes.

Your chosen course meets the statutory requirements for nurse education (NMC 2018) and comprises both field-specific (where you have sessions with students studying the same field of nursing as you) and shared modules (where you have sessions with students studying other fields of nursing). Successful completion of your apprenticeship allows you to apply for professional registration with the NMC as a Registered Nurse (Adult), Registered Nurse (Mental Health), or Registered Nurse (Children), according to your course.

Our aim is to provide a high-quality degree apprenticeship that will enable you as a graduate, to be successful throughout a challenging and rewarding career. Nursing is a career that requires life-long learning in a dynamic health care system and your course will provide the academic and practice-based foundation for both nursing care and further development. This curriculum fosters a learning environment that prepares caring and compassionate nurses committed to both professional and personal values, and responsibility.

SOCIAL WORKER

Integrated Degree Apprenticeship – Level 6

This apprenticeship is for health and social care employees who are working in a team where they are providing front facing intervention wanting to gain a professional qualification in social work.

The delivery of the course includes one day a week of 'off the job learning' for the duration of the course. There will be a strong emphasis on activity-focused learning and the apprentice will be expected to engage actively in all sessions.

On successful completion of study, we will issue the following award: BA (Hons) in Social Work Practice. In addition, you will be able to register with Social Work England as a Social Worker.

OPERATING DEPARTMENT PRACTICE

Integrated Degree Apprenticeship – Level 6

The Operating Department Practitioner Apprenticeship features an integrated degree to ensure you have the necessary academic and practical experience to become a confident Operating Department Practitioner.

ODPs must continually make professional decisions to ensure the patient receives the best care before, during and after their surgery. They ensure that the operating theatre environment is safe and effective, and therefore have expertise in the management of specialist equipment and materials in a highly technical environment, for example handling surgical instruments, checking anaesthetic equipment, moving patients and giving medication.

ODPs must demonstrate confidence, compassion, competence and effective judgement; being responsible for their decisions. They must use evidence based practice to inform and evaluate the effectiveness of the actions they take with the aim of continually improving outcomes for patients. They are responsible for ensuring their own professional knowledge and skills through continuous professional development (CPD) and support the development of others.

BIOMEDICAL SCIENTIST

Integrated Degree Apprenticeship – Level 6

Study an engaging Healthcare Science programme and specialise in Life Sciences.

This apprenticeship has been designed to provide apprentices with the knowledge, skills and behaviours needed to apply for registration as a biomedical scientist working within a clinical pathology laboratory. Biomedical scientists are responsible for the analysis of a wide range of diagnostic tests that contribute to the clinical assessment of patients for the presence of disease, the monitoring of health and the effectiveness of treatments. Within the clinical laboratory setting they are required to practice autonomously, use scientific and clinical judgement, and deal with ambiguity. Their work impacts directly on safe and effective patient care, and they contribute to the supervision and training of trainee practitioners and the pathology support workforce.

The course is accredited by the Institute of Biomedical Science and is approved by the Health and Care Professions Council.

MIDWIFE

Integrated Degree Apprenticeship – Level 6

Completing this course makes you eligible for registration as a Midwife with the NMC, allowing you to work independently or with a team in various healthcare settings.

This program aligns with the standards set by the Nursing and Midwifery Council (NMC), the Quality Assurance Agency, and University of Staffordshire's academic policies. It's jointly approved by University of Staffordshire and the NMC. You'll gain both knowledge and practical skills, enhancing your employability. The program fosters your professional identity and hones key skills like self-directed learning, problem-solving, teamwork, and critical thinking, all crucial for evidence-based care. Graduates typically find immediate job opportunities in the NHS as midwives, with options in management, research, education, and public health as well.

PARAMEDIC

Integrated Degree Apprenticeship – Level 6

Gain the vital skills to become a qualified paramedic and help save lives every day.

On our Paramedic Apprenticeship, you will learn how to diagnose and assess patients, administer medication, manage their airways, give life support and deal with injuries and illnesses. As you build your clinical experience, you'll also be able to handle more complex cases.

You will be employed as an apprentice paramedic and will split your time between working as part of an ambulance crew and learning on campus through four-week blocks of study.

At our Centre for Health Innovation, you will practise your clinical skills in a safe environment. It will involve using our simulation facilities, which include a giant immersive space that can double up as the scene of a road accident or other emergency.

Using high-quality manikins, you can also treat patients at home, take them to hospital in a training ambulance, and use our simulated A&E. And you'll have the chance to work alongside our other healthcare teams, including operating department practice and nursing.



IMPORTANT INFORMATION

Subject to approval/validation

We're always striving to deliver the most current and relevant degrees, both by creating new courses and regularly reviewing our current offering.

Each time we make changes, the course goes through a rigorous approval process to ensure that it's the perfect fit for our students, employers and other relevant stakeholders.

Some of the courses inside this guide may be marked as 'subject to approval' or 'subject to validation',

but don't worry, this just means some of the details of the course won't have been finalised yet. As soon as new courses are approved and validated, up-to-date information will be provided on the online course pages at www.staffs.ac.uk/courses

If you have been offered a place and there is a significant change to the course, or for any reason, the course doesn't run – we will contact you immediately and fully support you in finding the best suitable alternative.

At the time of printing in September 2024, the courses listed in this guide represent those we intend to offer for the 2025/2026 academic years. Very occasionally, however, we need to make changes to our courses, including their content and the way in which they are delivered. In some instances, courses can be discontinued or combined with other courses.

Reasons for withdrawing courses can include insufficient student numbers and courses not receiving the necessary accreditation or approval. Changes to course information may include operational and academic reasons.

If circumstances beyond our control mean we cannot provide particular educational services, all reasonable steps will be taken to minimise any disruption to those services. However, the University will have no liability for any loss or damage suffered by any prospect or student as a result.

As a prospective student of University of Staffordshire, it's your responsibility to ensure you have fully reviewed up-to-date course information before you apply,

and that your chosen course fully meets your requirements. You should also check the course still meets your requirements before accepting an offer to study with us.

Student satisfaction scores have been provided by Unistats and are correct at the time of going to print. For more information, visit: discoveruni.gov.uk

If we discontinue a course or programme and you're not happy with the alternative offered, or if a programme is changed and you're not happy with the changes, you'll be given the opportunity to withdraw from the programme. Up-to-date course information can be found on our website (www.staffs.ac.uk), or by calling us on **01782 294400**.

If you're offered a place at the University of Staffordshire, your offer will be subject to the University's Terms and Conditions of Offer. If you become a student of University of Staffordshire, you will enter a contract with us and be bound by our rules and regulations. These, too, may vary from time to time (www.staffs.ac.uk/rulesandregs).



University of
Staffordshire

TOP 5 FOR FIRST GEN STUDENTS

The Mail University Guide 2025

TOP 10 FOR CAREER PROSPECTS

Whatuni Student Choice Awards 2023

TOP 20 FOR FACILITIES

Whatuni Student Choice Awards 2023

TOP 5 FOR SOCIAL INCLUSION

The Times and The Sunday Times Good
University Guide 2025

BEST EDUCATIONAL INSTITUTION

For Games - TIGA Games Industry Awards
2024

TOP 20 IN THE ENGLISH SOCIAL MOBILITY INDEX

LSBU and Higher Education Policy Institute
2024

For more detailed information
on courses or studying at
University of Staffordshire visit:
www.staffs.ac.uk/undergraduate

Find us on:
www.staffs.ac.uk/socialmedia

