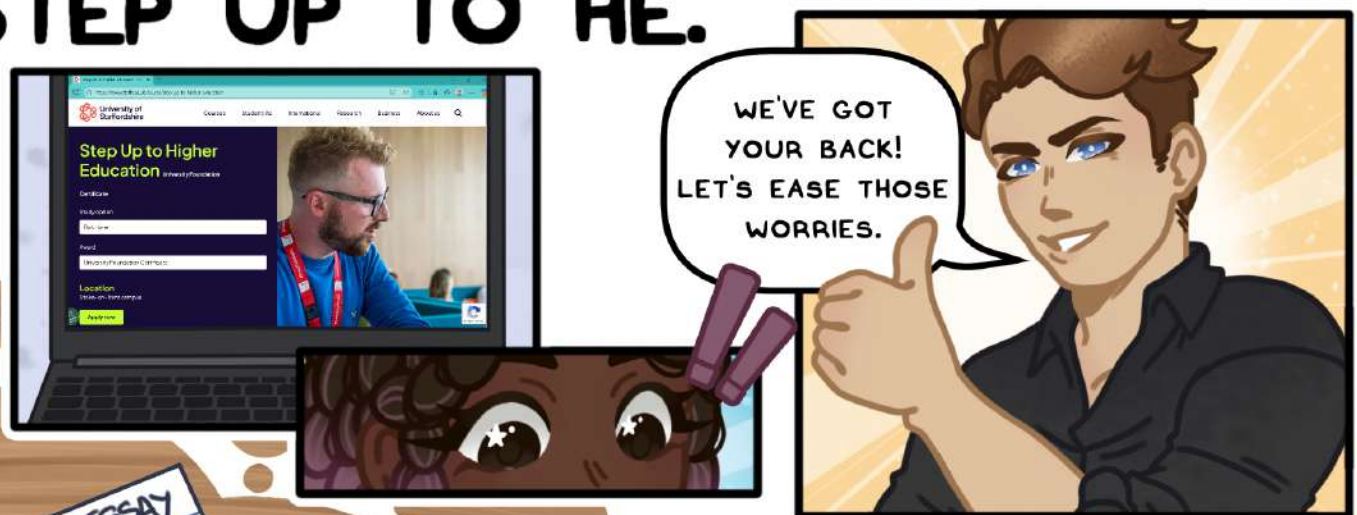


TRANSFORMING TRANSITIONS: A COMIC FOR THE ACCESS AND PARTICIPATION PLAN



STEP UP TO HE:



COMMUNITY CONNECTIONS:

MEETING AT THE GURDWARA:



WHAT WE LEARNED:

STEP-UP-TO-HE

60 SESSIONS, AND A TOTAL OF 55 PARTICIPATING STUDENTS. THE PROGRAM ENHANCED ACADEMIC SKILLS, INCREASED CONFIDENCE IN PURSUING HIGHER EDUCATION, AND FOSTERED A SENSE OF BELONGING AT THE UNIVERSITY. LAST YEAR, 80% OF PARTICIPANTS (48 OUT OF 60) SUCCESSFULLY PROGRESSED ON TO AN UNDERGRADUATE DEGREE.

FE2HE

THE FE TO HE PROGRAMME WAS DELIVERED ACROSS TWO SCHOOLS, AND A SURVEY WAS GIVEN TO 28 STUDENTS. RESULTS SHOWED A SLIGHT IMPROVEMENT IN ACADEMIC READINESS FOR UNIVERSITY, BUT CONFIDENCE AND ASPIRATIONS VARIED AMONG STUDENTS. ITS ACTIVITIES INCLUDE ENHANCING RESILIENCE, SELF-BELIEF, AND HOLISTIC MODULES, PREPARING STUDENTS FOR UNIVERSITY LIFE AND PROVIDING INFORMATION ABOUT THE SUPPORT AVAILABLE.

COMMUNITY CONNECTIONS:

EVENTS ARE ORGANISED THROUGHOUT THE ACADEMIC YEAR BASED ON STUDENTS' DIVERSE CULTURAL AND RELIGIOUS NEEDS. THE PROGRAMME, OFFICIALLY BEGUN A FEW MONTHS AGO, AIMS TO SUPPORT COMMUNITY ENGAGEMENT, INCREASE STUDENTS' SENSE OF BELONGING, AND PROVIDE SUPPORT THROUGH SOCIAL AND CULTURAL EXCHANGES. A BETTER UNDERSTANDING OF ITS IMPACT WILL BE AVAILABLE IN OCTOBER.

NO QUESTION WAS EVER SEEN AS "STUPID," IN FACT, EVERY QUESTION WAS TREATED WITH RESPECT AND ANSWERED WITH CARE.

AS SOMEONE WITH ANXIETY, THE CALM, SUPPORTIVE APPROACH ENCOURAGED ME TO TRY NEW THINGS FOR MY MENTAL WELL-BEING.

ON THE FIRST DAY, I FELT LIKE A FISH OUT OF WATER. BUT OUR TUTOR, ASHLEY, BROUGHT EVERYONE TOGETHER, ENSURING NO ONE WAS LEFT STANDING ALONE.